

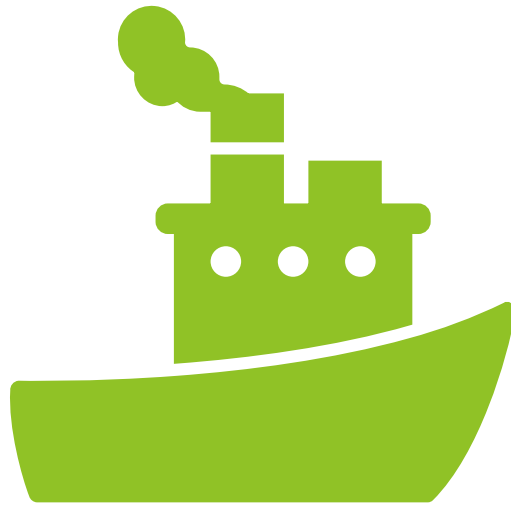


**Full Committee Meeting**  
**25 July 2024**

# Navigation Subcommittee Report

Captain Wesley Moore, Sabine Pilots





# Facility Evaluation for Sabine- Neches Waterway Deepening

Prepared by Wesley Moore

Sabine Pilots Association

Date: July 25, 2024

# Introduction



Q1/2025 44 feet allowable draft available to docks behind Texaco Island and below



Q4/2027 44 feet allowable draft available to dock at the Port of Beaumont and below



2030 - 48 feet allowable draft available to all docks at the Port of Beaumont and below



# Impact on Waterway Users



## Increased displacement of vessels

Today's 100,000 tons going up to 155,000 tons



## Greater forces on shoreline structures and moored vessels

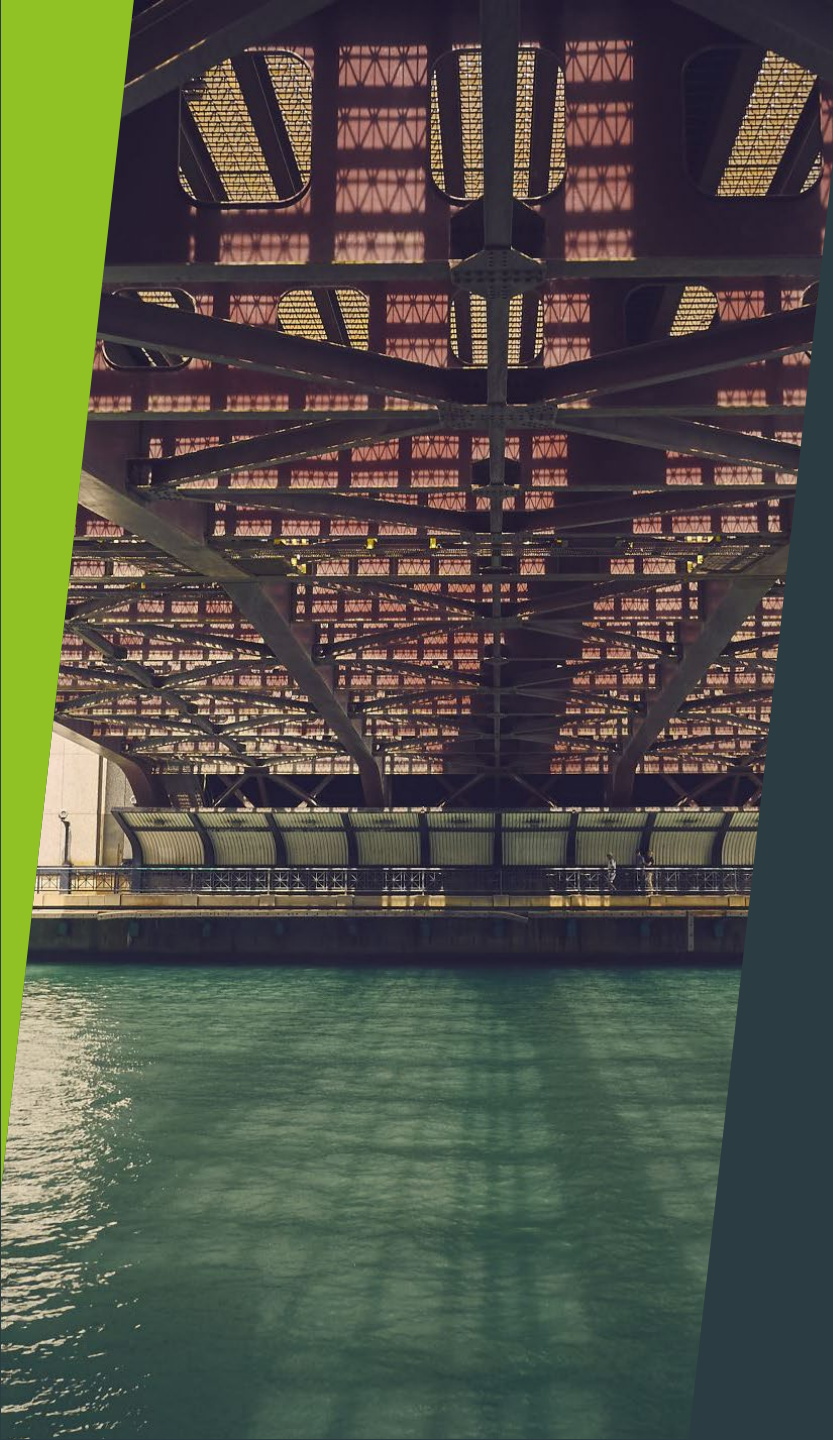


## Importance of proactive measures



## Recommendations for Dock and Terminal Owners

- Comprehensive facility examinations including passing-vessel studies
- Applicability to all docks and terminals, regardless of dredging plans



## Critical Areas for Consideration - Dock Structure

- ▶ Ensuring physical integrity
- ▶ Withstanding increased hydrodynamic forces

# Critical Areas for Consideration - Mooring Equipment and Arrangements

1

Evaluating and  
upgrading mooring  
equipment

2

Reassessing  
mooring  
arrangements for  
secure mooring

# Critical Areas for Consideration - Shoreside Access



ENSURING SAFE AND SECURE  
GANGWAYS



EVALUATING LANDING AREAS  
AND ALLOWABLE VERTICAL  
ANGLES



# Conclusion



MITIGATING RISKS ASSOCIATED  
WITH INCREASED VESSEL  
DISPLACEMENT



ENSURING SAFE AND EFFICIENT  
OPERATIONS



OFFER OF FURTHER GUIDANCE  
AND SUPPORT





# **Tug Utilization Sub-Committee Report (Ad Hoc)**

**Captain Sean Marchant, Valero**



# **Education, Research and Workforce Development Subcommittee Report**

**Mr. Rob Dubois, Lamar University**



# Lamar University/Lamar State College Orange – Maritime STEM CAMP for 180+ High School Students



**TEXAS ACADEMY**  
AT LAMAR UNIVERSITY.

CENTER FOR  
ADVANCES IN PORT MANAGEMENT  
**LAMAR UNIVERSITY**

Governor's Summer Merit Program:  
Innovation ColLABoration



# Training Opportunities for The US Merchant Marine

SETWAC Seafarer Welfare Committee

July 25, 2024



# Lamar State College Orange Maritime Program

---

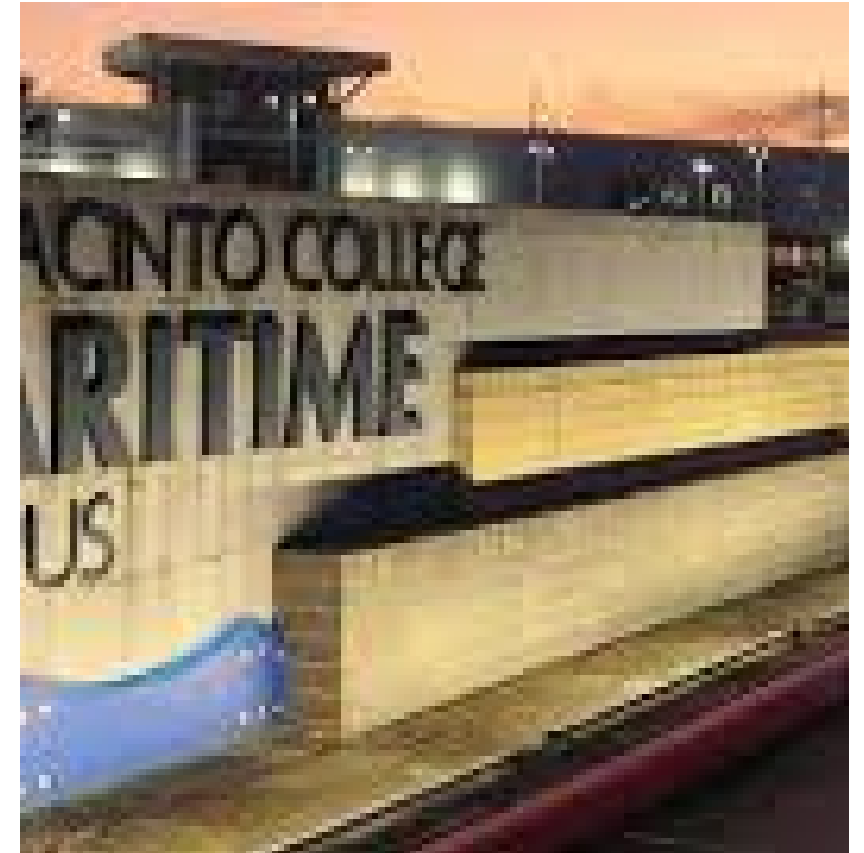
1. LSCO is currently working with several local school districts for dual credit maritime training. Students can complete their training during their 11<sup>th</sup> and 12<sup>th</sup> grade years and go to work for very attractive wages and benefits immediately upon walking across the stage at their HS graduation. This program needs support from industry in the form of used equipment. If any company has used lines, bits, bollards, safety gear, or any other items that would be useful for hands-on training, they can email Dr. Keith Jones and we will send a truck and trailer pick the items up.
2. We are now offering the OUPV captains license and upgrade to 25/50 ton license online in a work at your own pace format in partnership with Mariners Learning Systems. I can set up a new class anytime we have about six or more students ready to begin.
3. The hands-on trailer, simulator lab, and all our other equipment is available for industry training. We can set up short courses to cover any specific training needs of our maritime partners just like we do for the chemical plants.
4. We would like to invite any of our industry partners who need entry-level grads to join us for our advisory meetings to provide guidance on the skills most needed by each company so that we are able to better plan our training
5. We are actively seeking a partner to manage our USCG training certifications. If anyone is already managing USCG compliance in other areas, we may be able to provide a stipend for managing our certificates.



# San Jacinto College Maritime Program

---

- **Address:** 3700 Old Hwy 146  
La Porte, TX 77571
- **Phone:** (281) 459-5483
- **Website:** [www.sanjac.edu/information-for/business-partners/maritime](http://www.sanjac.edu/information-for/business-partners/maritime)
- **List of Courses:**  
<https://noncredit.sanjac.edu/public/category/programStream.do?method=load&selectedProgramAreaId=19569&selectedProgramStreamId=19629>





# Paul Hall Center School of Seamanship

---

- **Address:** 45353 St. George's Avenue  
Piney Point, MD
- **Phone:** (301) 994-0010
- **Website:** [www.seafarers.org/training-and-careers/jobs/the-seafarers-harry-lundeberg-school-of-seamanship](http://www.seafarers.org/training-and-careers/jobs/the-seafarers-harry-lundeberg-school-of-seamanship)
- **Application Site:** <https://mymaritimecareer.org>



# Texas A&M Maritime Academy

---

- **Physical Address:** 200 Seawolf Parkway  
Galveston, Texas 77554
- **Mailing Address:** P.O. Box 1675  
Galveston, Texas 77553
- **Website:** <https://www.tamug.edu/corps/index.html>
- **Application Page:**  
<https://www.tamug.edu/corps/pages/About/Application-Maritime.html>



# United States Merchant Marine Academy

---

- **Address:** 300 Steamboat Rd  
Kings Point, NY 11024
- **Phone:** (516) 726-5800
- **Website:** [www.usmma.edu](http://www.usmma.edu)
- **Admissions:** [www.usmma.edu/admissions](http://www.usmma.edu/admissions)



# Maritime Dates:

- **World Maritime Day – September 26, 2024** (International Maritime Organization)
- **National Maritime Day – May 22, 2025** (US Maritime Administration)
- **Day of the Seafarer – June 25, 2025** (International Maritime Organization)
- **Sea Sunday – July 13, 2025** (Stella Maris & Missions to Seafarers)



NAVIGATING  
THE FUTURE:  
SAFETY FIRST!

# COMMERCIAL FISHERIES – COMMERCIAL FISHING VESSEL EXAMINER

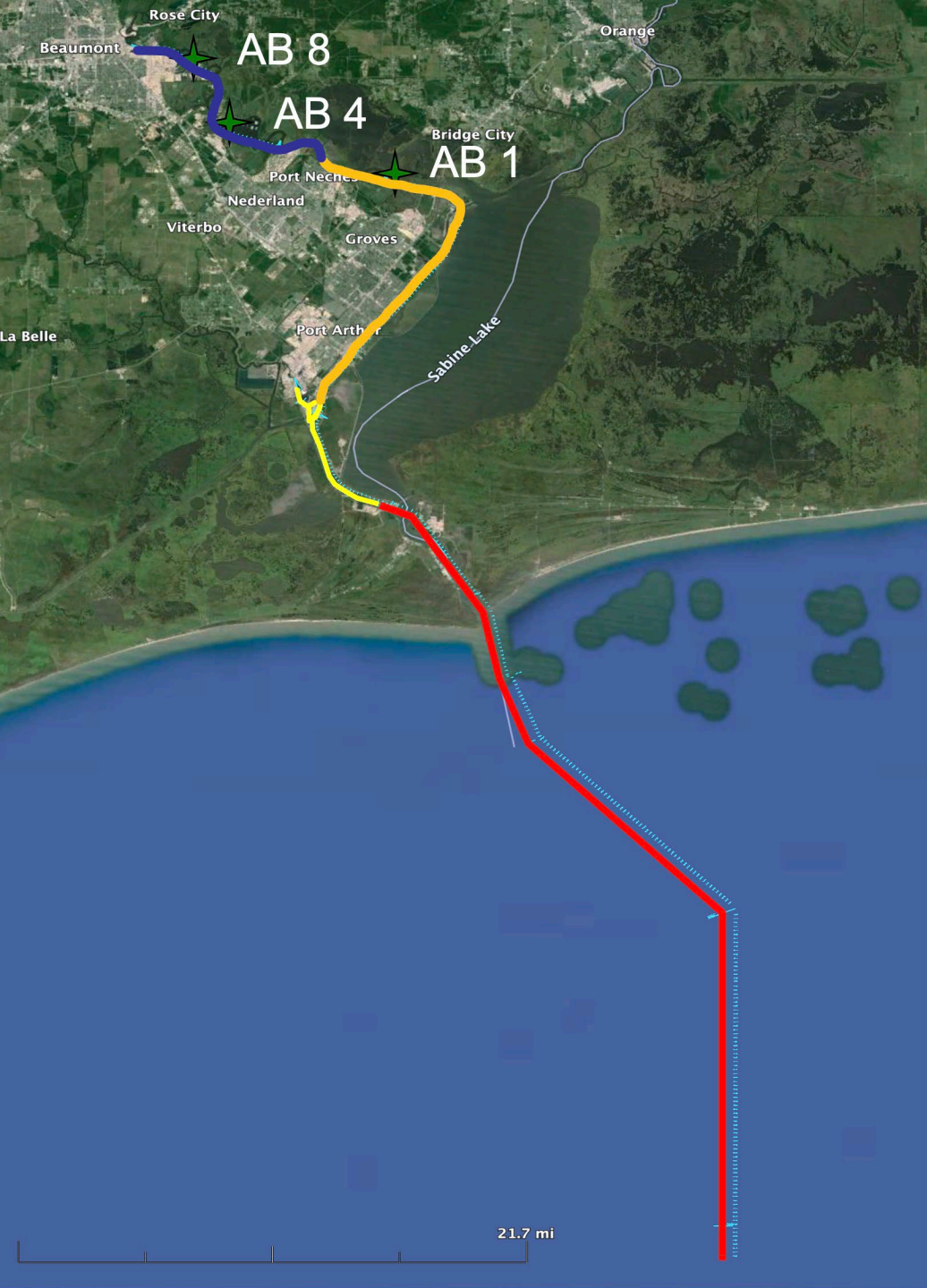
Southeast Texas Waterway Advisory Committee

**NATHAN SOUZA**

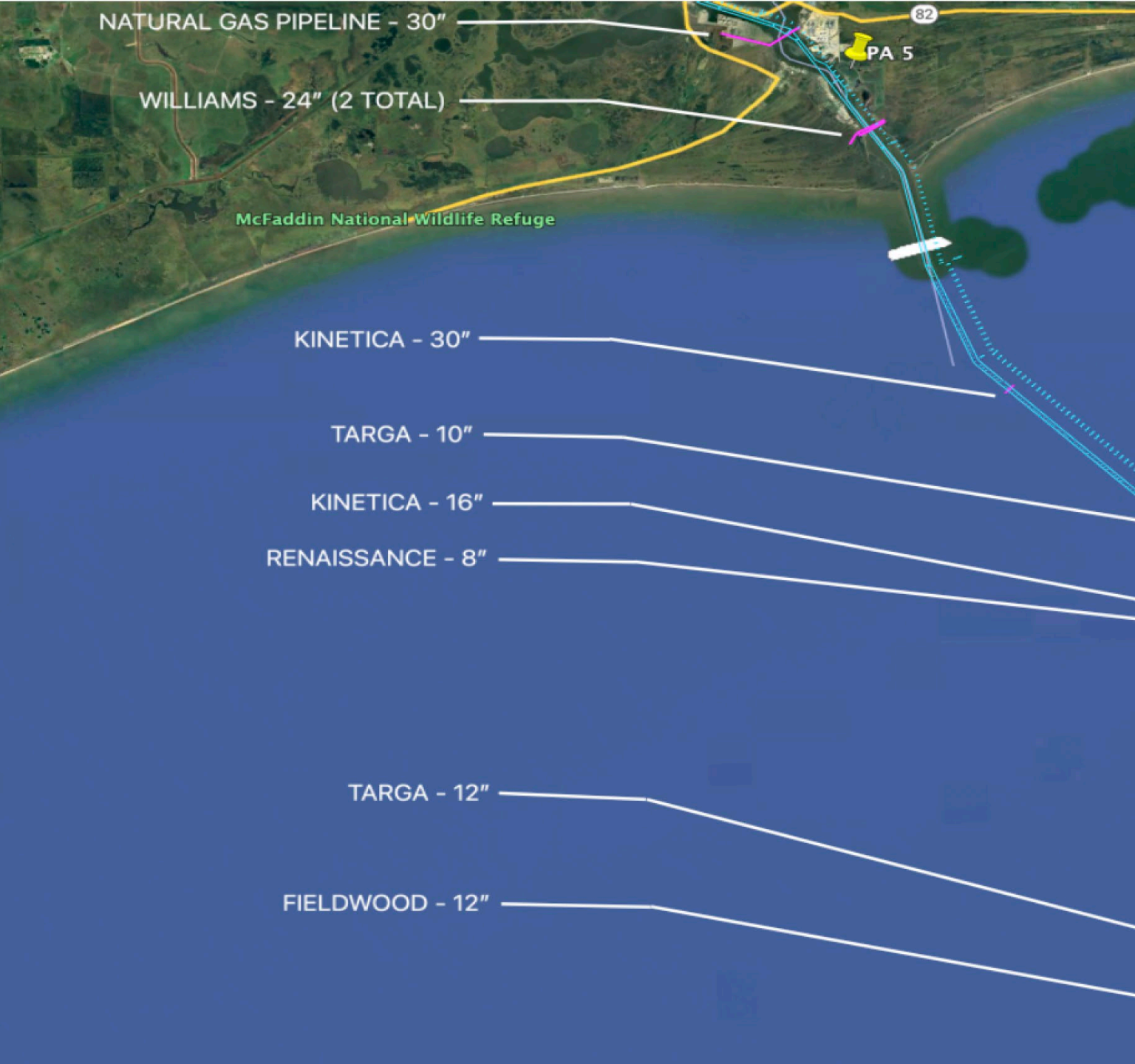


**Waterway Maintenance and Improvement  
Subcommittee Report**  
Kyle Reed, Sabine-Neches Navigation District





<u>Contract Number</u>	<u>Color</u>	<u>Contract Name</u>	<u>Award Year</u>	<u>Owner of Contract</u>
1	-	DREDGE ANCHORAGE BASIN #1	FY 19	USACE
2A	Red	DREDGE OFFSHORE CHANNEL TO SABINE BANK CHANNEL	FY 21	USACE
2B	Red	DREDGE SABINE BANK CHANNEL TO SABINE PASS CHANNEL	FY 23	SNND
3	Yellow	DREDGE SABINE PASS CHANNEL TO TAYLOR BAYOU	FY 24	SNND
4	Orange / Blue	DREDGE LOWER SABINE NECHES CANAL TO LOWER NECHES RIVER CHANNEL	FY 25	SNND
6	Red	DREDGE SABINE PASS JETTY CHANNEL TO SABINE BANK EXTENSION	FY 24	USACE
7	Yellow	DREDGE SABINE PASS CHANNEL TO TAYLOR BAYOU	FY 25	USACE
8	Orange	DREDGE LOWER SABINE NECHES CANAL TO LOWER NECHES RIVER CHANNEL	TBD	USACE
9	Blue	DREDGE MID NECHES RIVER CHANNEL TO UPPER NECHES RIVER CHANNEL	TBD	USACE
10	-	MITIGATION WEST BLACK BAYOU, LA	TBD	USACE
11	-	MITIGATION EAST BLACK BAYOU, LA	TBD	USACE
12	-	MITIGATION WILLOW BAYOU, LA	TBD	USACE
13	-	DREDGE ANCHORAGE BASIN #8	FY 24	SNND
14	-	DREDGE ANCHORAGE BASIN #4	FY 25	SNND



SNWW CIP - OFFSHORE PIPELINE STATUS				
Owner	Pipe Size	Stationing	Status	Anticipated Removal Date
Natural Gas Pipeline	30"	242+28	Removed	
Williams	24"	36+69	USACE has verbally stated that both Williams pipelines will no longer need to	
Williams	24"	41+69		
Kinetica	16"	81+666	Slated for September 18th removal. Working to bring this date closer.	09/24
Kinetica	30"	24+858	Currently expediting FERC approval	10/24
Targa	10"	56+690	Waiting on BSEE Approval - Targeting late August	08/24
Targa	12"	139+909		08/24
Renaissance	8"	82+889	USACE to determine if abandon in place is an option	
FieldWood	12"	149+958	Removed	



# Sabine-Neches Waterway

## Operations and Maintenance Update

**Timothy J. White, P.E., PMP**  
**Resident Engineer**

**Sara C. Knoll, P.E.**  
**Operations Manager**

**USACE – Galveston District**

*SETWAC Meeting*  
*July 25, 2024*



US Army Corps of Engineers  
**BUILDING STRONG®**



# **Ongoing Contracts**

## **Sabine-Neches Waterway**

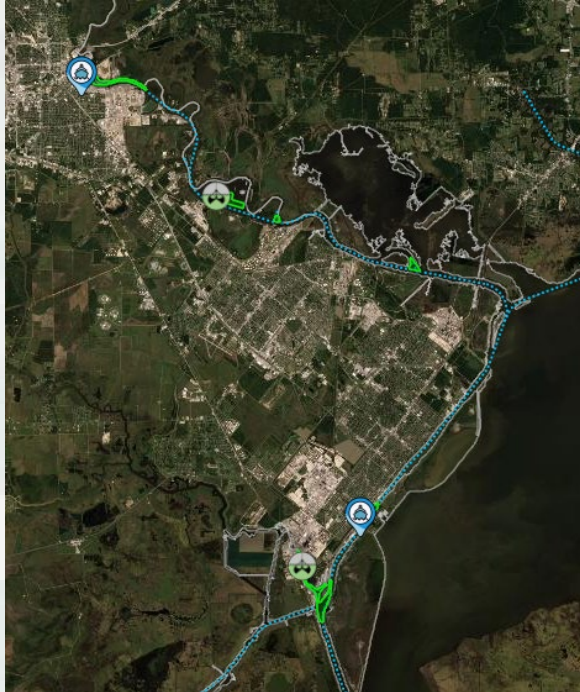


---

**BUILDING STRONG®**



# SABINE-NECHES WATERWAY FY23 SNWW Maintenance Dredging



WORK COMPLETE

Project:	Sabine-Neches Waterway FY23 SNWW Maintenance Dredging
Dredging Depth:	40ft + Advance Maint.
Dredging Quantity:	3 MCY
Material Type:	MAINTENANCE
Dredge Type	Pipeline Dredge
Award:	August 2023
Req. Completion	August 2024

Contractor: Orion



BUILDING STRONG®



# SABINE-NECHES WATERWAY SABINE BANK TO SABINE PASS DEEPENING



Project:	Sabine-Neches Waterway Sabine Bank Channel to Sabine Pass Channel Half Depth (Contract #2B)
Dredging Depth:	46/44 feet + Adv Maint.
Material Type:	NEW WORK
Dredge Type	Hopper Dredge
Award:	December 2023
Req. Completion	December 2024

Awarded by SNND.

Contractor: Great Lakes  
Dredge & Dock



**BUILDING STRONG®**



**FY 2024**

# **Future Dredging Contracts**

## **Sabine-Neches Waterway**

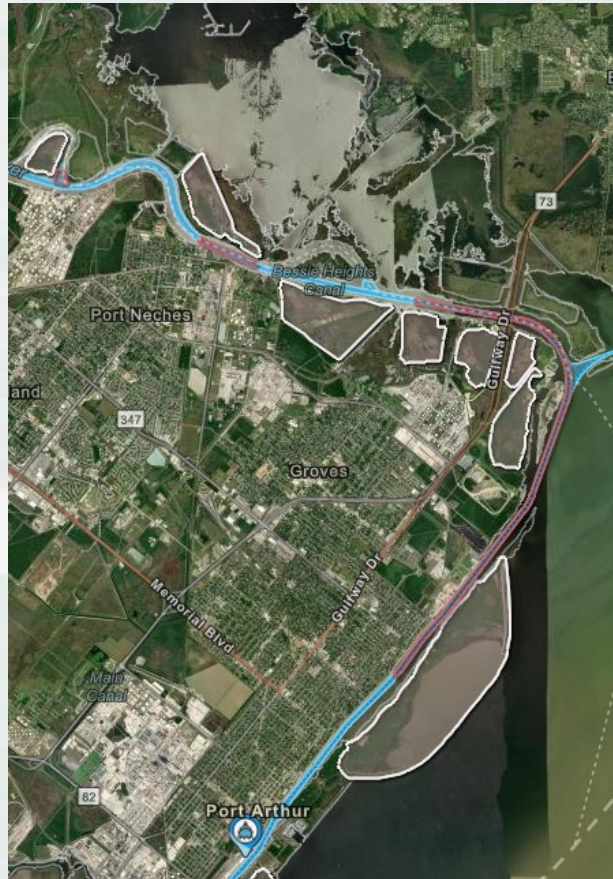


---

**BUILDING STRONG®**



# SABINE-NECHES WATERWAY FY24 SNWW Maintenance Dredging



Project:	Sabine-Neches Waterway FY24 SNWW Maintenance Dredging
Dredging Depth:	40ft. Authorized Depth
Dredging Quantity:	Est. 2.8 MCY
Material Type:	<b>MAINTENANCE</b>
Dredge Type	Pipeline Dredge
Advertisement	June 2024
Bid Opening	July 2024
Award:	September 2024
Est. Completion	May 2025

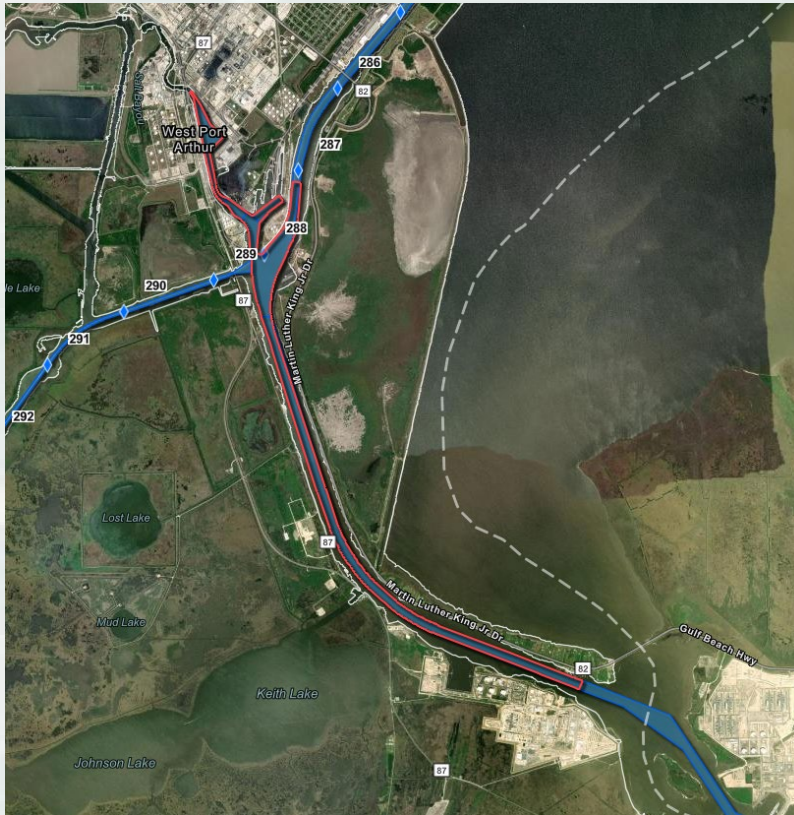
Contract includes Sabine-Neches Canal, Lower Neches River, and Turning Basin at Smith Bluff.



**BUILDING STRONG®**



# SABINE-NECHES WATERWAY PORT ARTHUR CANAL & TAYLOR'S BAYOU DEEPENING



Project:	Sabine-Neches Waterway Port Arthur Canal, Taylor's Bayou Half Depth (Contract #3)
Dredging Depth:	44 feet + Adv Maint.
Material Type:	NEW WORK
Award:	SNND: FY24

To be awarded by SNND.

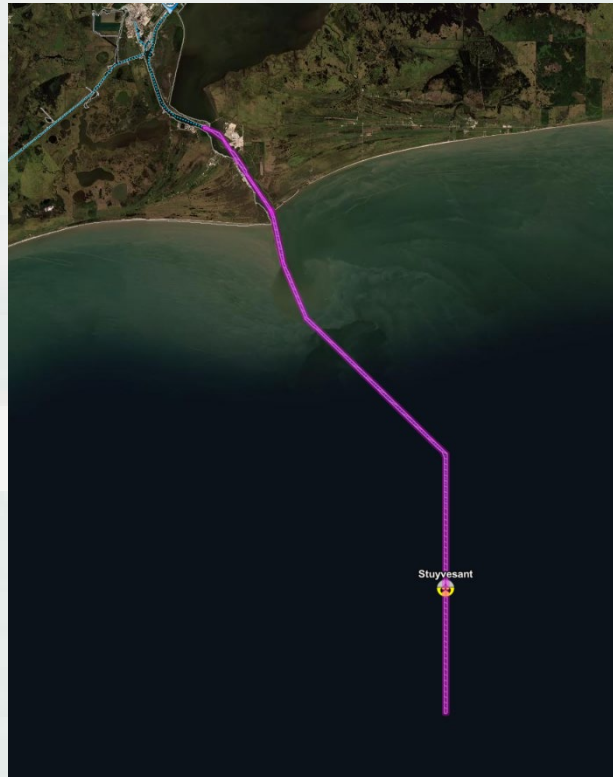
Contractor: TBD



**BUILDING STRONG®**



# SABINE-NECHES WATERWAY EXTENSION CHANNEL TO SABINE PASS DEEPENING



Project:	Sabine-Neches Waterway – CIP (Contract #6 – Full Depth – Sabine Entrance Channel)
Dredging Depth:	48/50 feet + Adv Maint.
Material Type:	<b>NEW WORK</b>
Award:	USACE: September 2024

To be awarded by USACE.  
Contract 6A & 6B combined.

Contractor: TBD

POC:  
Franchelle Nealy  
Project Manager  
409-766-3187



**BUILDING STRONG®**



**SABINE  
TO GALVESTON  
PORT ARTHUR  
&  
ORANGE**



---

**BUILDING STRONG®**



## Orange County Coastal Storm Risk Management Project



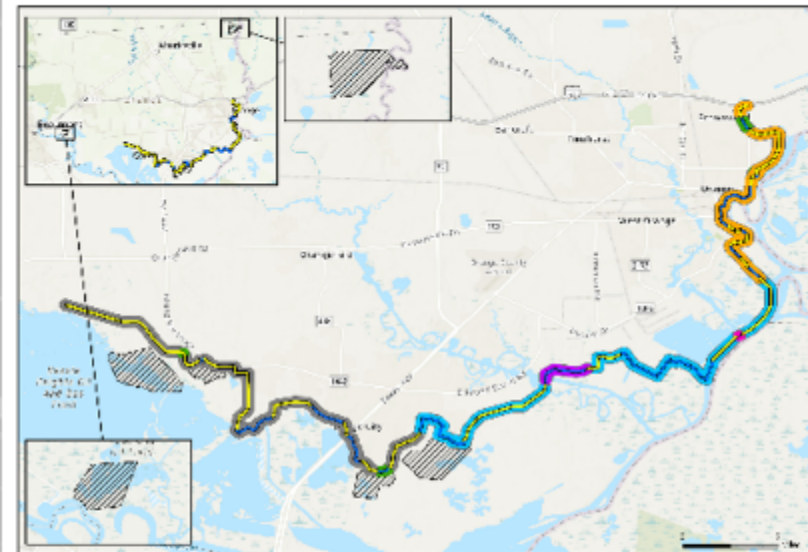
US Army Corps  
of Engineers

### A new levee/floodwall system:

The Orange County Coastal Storm Risk Management (CSRM) Project includes construction of a new levee/floodwall system to reduce storm surge damage caused by hurricane and tropical storm events that affect the southern half of Orange County along the Sabine River and Bessie Heights Marsh. The proposed project alignment follows the edge of the Sabine and Neches River floodplain from the City of Orange and ends West of Bessie Heights, measuring approximately 26.3 miles. This includes construction of 15.6 miles of levees, 10.7 miles of floodwalls, 7 pump stations, 56 internal drainage structures, 32 closure gates located at road and railway crossings, 2 navigable sector gates and 6 environmental mitigation areas.

### Objectives:

The new CSRM Project is intended to reduce risk to human life and reduce economic damages to business, residents, and infrastructure from storm surge while ensuring no **additional** induced interior flooding.



Orange County  
Coastal Storm Risk Management Project

### Project Schedule:



Contract #	Scope	Contract #	Scope
OC01	Cow Bayou Complex – 84 ft Navigable Gate, Pump Station	OC04	7 Pump stations, tie ins, gates, drainage structures
OC02	2.4 miles floodwall, 3.0 miles levee, 18 gates, drainage structures	OC05	2.6 miles floodwall, 7.6 miles levee, 7 gates, drainage structures
OC02A	4.2 miles floodwall, 4.9 miles levee, 5 gates, drainage structures	OC06	6 Mitigation sites to compensate for impacts to forested wetlands and estuarine marsh
OC03	Adams Bayou Complex – 84 ft Navigable Gate, Pump Station		





## Port Arthur and Vicinity Coastal Storm Risk Management Project



US Army Corps  
of Engineers.

### Reinforcement of an existing levee/floodwall system:

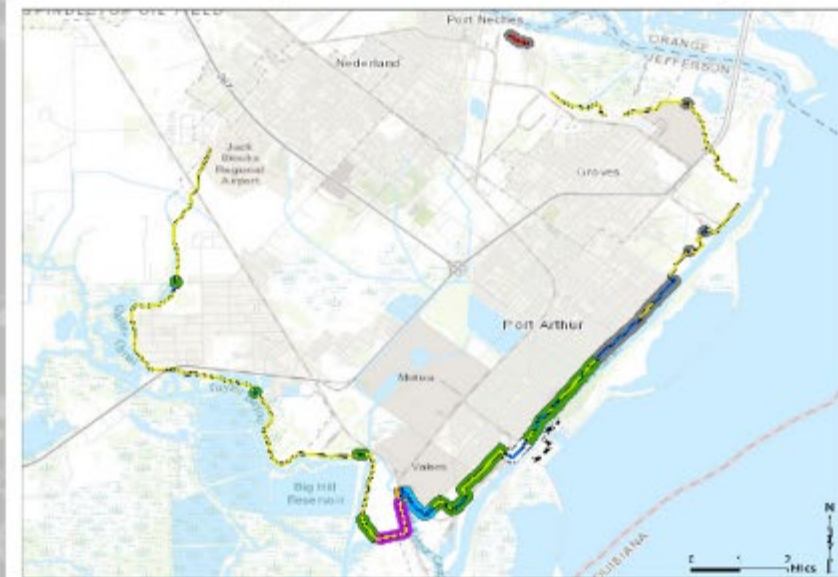
The Port Arthur and Vicinity Coastal Storm Risk Management (CSRM) Project in Jefferson County will result in improvements and additions to the existing Hurricane Flood Protection Project (HFPP). The plan includes raising approximately 5.5 miles of the existing 27.8 miles of earthen levee and constructing or reconstructing approximately 5.7 miles of floodwall. A separate 1,830 feet of new earthen levee will be constructed in the Port Neches area northwest of the existing northern terminus. Additionally, 26 vehicle closure structures will be replaced and erosion protections will be added.

### Objectives:

The improved CSRM system is intended to increase the level of performance and resiliency of the existing Port Arthur and Vicinity HFPP.



Road closure gate



Port Arthur and Vicinity  
Coastal Storm Risk Management Project



### Project Schedule:

Q1 FY19

Design

PPA Signed  
29 Nov 2019

Q2 FY20

Construction

Q1 FY27

Contract #	Scope	Contract #	Scope
PAV01	1.1 miles levee raise	PAV03A	3.3 miles levee raise, 1.9 miles floodwall replacement, 1 gate
PAV02	0.2 miles floodwall replacement	PAV03B	0.02 miles levee raise, 0.5 miles floodwall replacement, 7 gates
PAV03	0.1 miles levee raise, 1.0 miles floodwall replacement, 11 gates	PAV04	0.4 miles levee raise, 0.4 miles new levee, 2.0 miles floodwall replacement, 3 gates



# Taylors Bayou

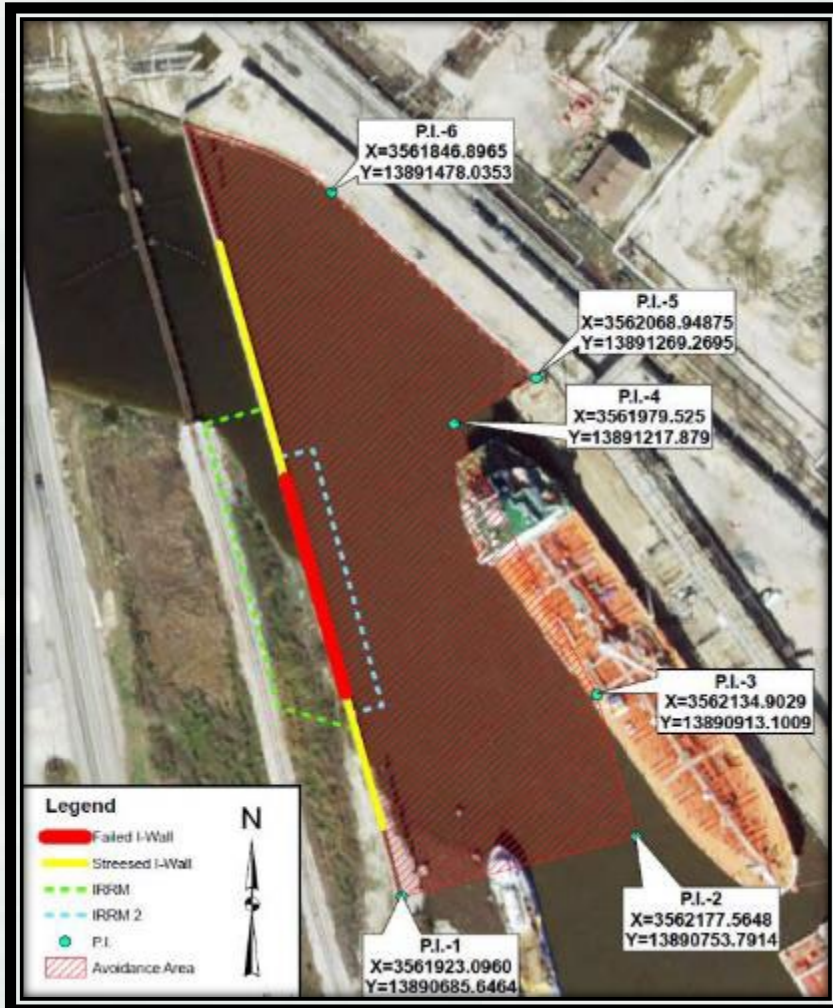


---

**BUILDING STRONG®**



# Taylors Bayou Current Restrictions



## Current Status:

- Vessel Traffic Allowed in Hatched Area shown in Figure WITH LIMITATIONS put on tugs.
- Wall and temporary protection is being monitored by DD7 and USACE.



# Taylor's Bayou Proposed Channel Improvement Changes



Current



Proposed



**BUILDING STRONG®**



# Taylor's Bayou Proposed Channel Improvement Changes



Current



Proposed



**BUILDING STRONG®**

# Questions?



**Sara C. Knoll, P.E.**  
**CESWG-ODN**  
**409-207-3131**  
[sara.c.knoll@usace.army.mil](mailto:sara.c.knoll@usace.army.mil)

**Timothy J. White, P.E., PMP**  
**CESWG-ECC-NP**  
**409-985-2000 ext.1412**  
[timothy.j.white@usace.army.mil](mailto:timothy.j.white@usace.army.mil)



**BUILDING STRONG®**

# **MSU Port Arthur Port Security Specialist**



**Michael J. Hiatt**  
409-284-5775 Mobile  
409-723-6525 Desk  
**[Michael.j.hiatt2@uscg.mil](mailto:Michael.j.hiatt2@uscg.mil)**



# **Southeast Texas and Southwest Louisiana Area Maritime Security Committee**

---

**Port Security Grant Program: FY24 SETX/SWLA received \$18.5 million in projects to review. With a total of 24 projects. The total for PSGP for the nation is \$90 million.**

**Area Maritime Security Plan- The plan was revised and submitted for review by CGHQ. Very few changes to the plan overall with the exception of a Cyber Annex. The Areas Top Three Transportation Security Incidents Remain the same.**

**Protest at Ports Across the Nation: Protest continue to affect our ports, this year has been extremely busy, even as close as Houston. We must stay vigilant and stay the course together. Yesterday's AMSC meeting showcased that our best and brightest are engaged and prepared for all threats and hazards. Southeast Texas and Southwest Louisiana are prepared.**



# Port Security Grants Program

FEMA Grant POC:

Lurranda “Rene” Phillips

(202)368-5487 Work Mobile

(202)786-9735 Desk

[Lurranda.Phillips@fema.dhs.gov](mailto:Lurranda.Phillips@fema.dhs.gov)

**If you have questions pertaining to your FY24 PSG please reach out to FEMA for details.  
The USCG is unable to comment on why and why not!**

## Questions?

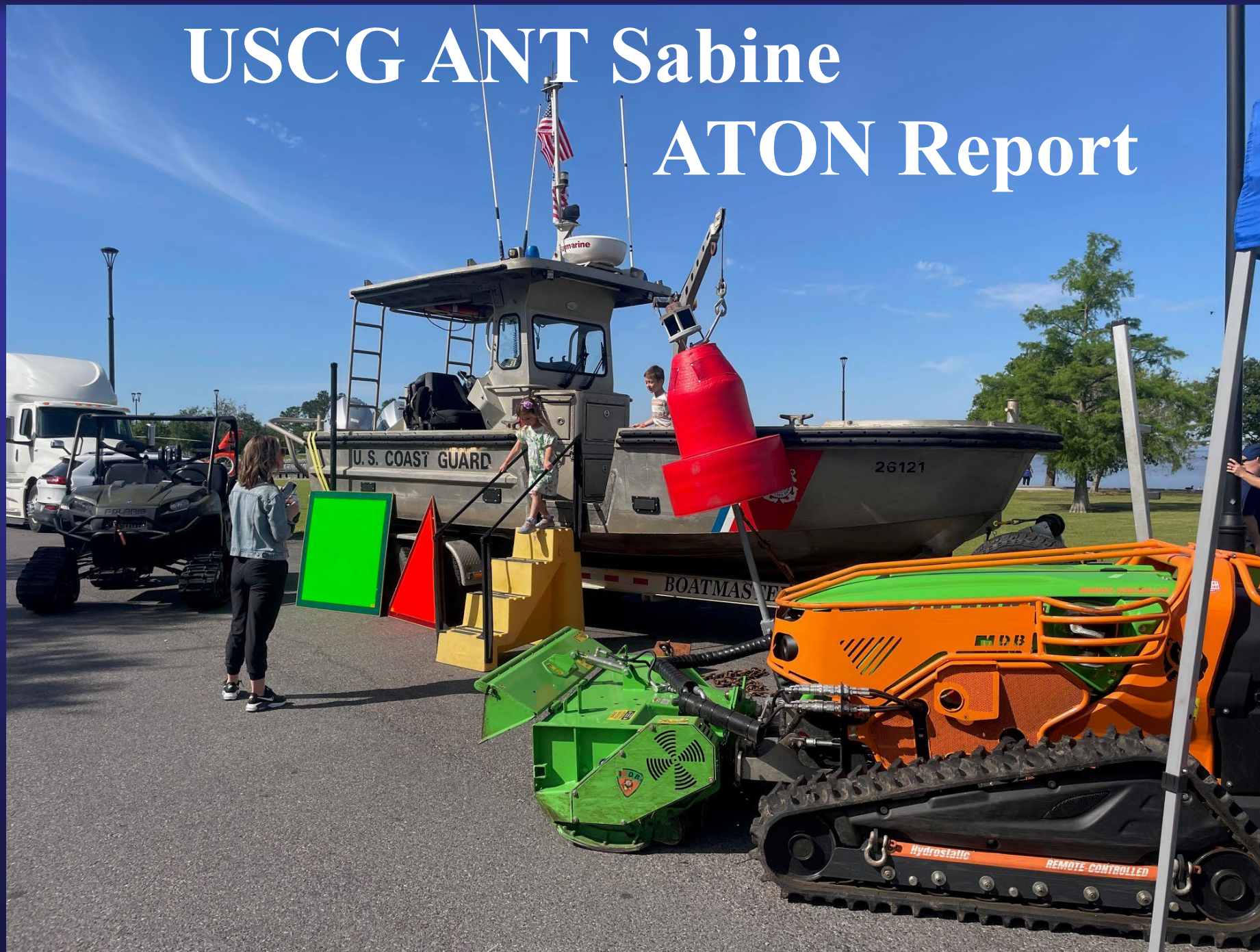
**Michael J. Hiatt**

409-284-5775 Mobile

409-723-6525 Desk

**[Michael.j.hiatt2@uscg.mil](mailto:Michael.j.hiatt2@uscg.mil)**

# USCGC ANT Sabine ATON Report





# New Business



# MLK and Veterans Bridge Economic Impact Analysis

SETWAC Committee Meeting | July 25, 2024

Matthew Mahoney, Project Manager - TxDOT Maritime Division  
Johanna Guerrero, PE, CFM - AECOM



# The Problem

**MLK Bridge clearance is 136 ft and Veterans Bridge clearance is 143 ft:**

- **Restricts movement for larger vessels – LPG carriers**
- **Operation delays:**
  - **Pilots need to remove/lower the antenna, ballast, or daytime restrict**
  - **Sets off a chain reaction: products can't be loaded and back up in containers/tanks, facilities upstream can't move product.**
  - **High water levels have delayed ships for up to a week**
- **Safety issues - allisions**
- **May direct businesses to other ports**
- **May limit industrial growth as new facilities are planned in alternative locations to avoid the clearance restriction**





# Project Goals

- Determine the economic impact of the MLK and Veterans Bridge air-draft restriction on the ports and industries located along the Sabine-Neches Waterway.
- Determine if replacing the bridges is cost-effective.



# Project Scope

## 1. Data collection:

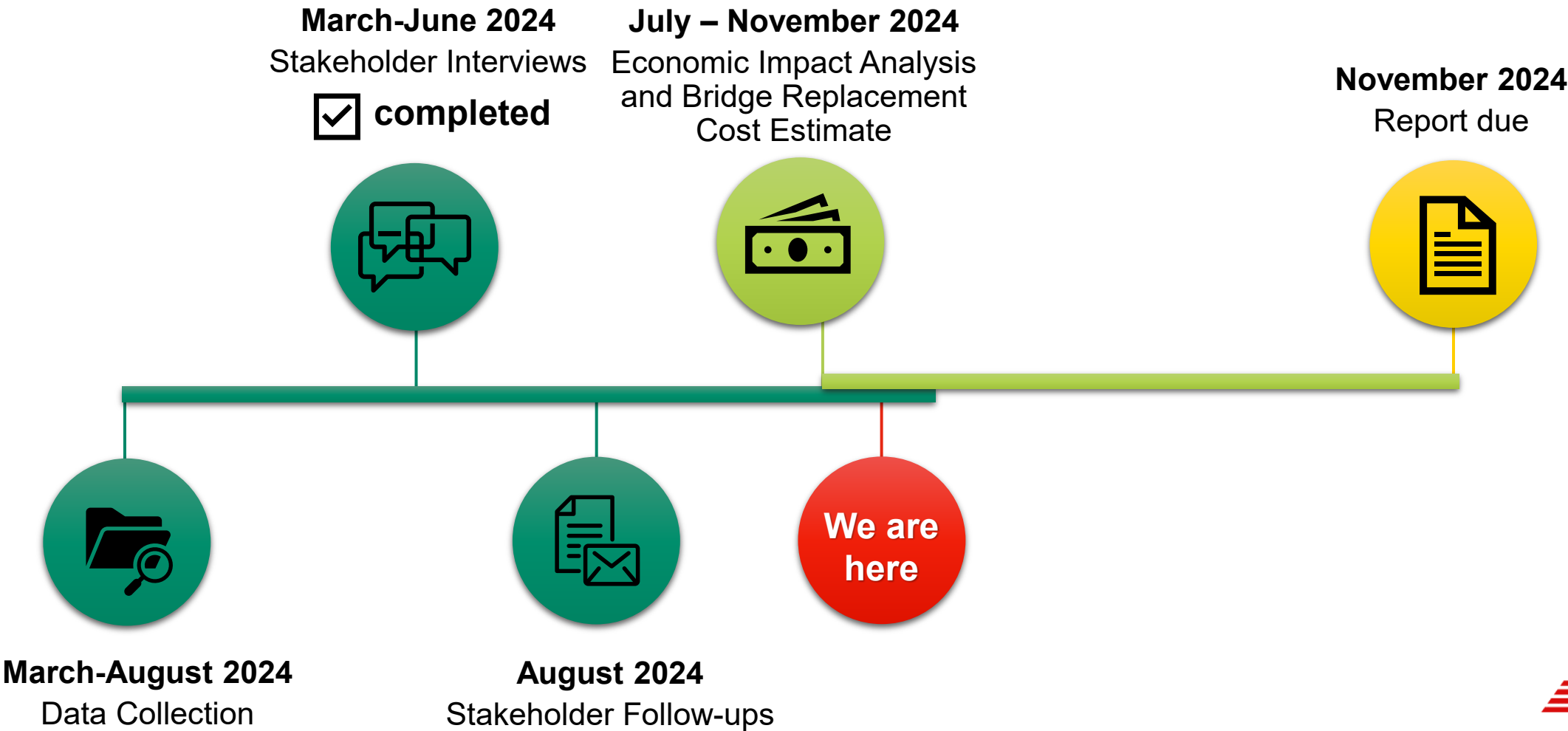
- Stakeholder Engagement
  - Determination of operational impacts
  - Limitations to current and future cargo movement
- Commodity, vessel movement, allision data
  - Waterborne Commerce Statistics Center (WCSC)
  - Sea-Web
  - Stakeholders

## 2. Impact Analysis

- Economic impact assessment
- Bridge replacement preliminary cost estimate
- Benefit-cost analysis



# Project timeline





# We need your help!

1. Cost of air-draft restriction
2. Size and capacity of vessels that have air-draft restriction
3. Plans for using larger vessels
4. What ports are being used when vessels are not able to call into your facilities
5. Possible tonnage and employment increase in the case of no air-restriction
6. Possible facilities expansion in the case of no air-restriction





How can you help?

Please contact:

[Matthew.Mahoney@txdot.gov](mailto:Matthew.Mahoney@txdot.gov)

OR

[Johanna.Guerrero@aecom.com](mailto:Johanna.Guerrero@aecom.com)

Any data shared will be kept  
confidential and will be aggregated to  
ensure that no individual facility can  
be identified.





---

# Thank you!





# Texas General Land Office Oil Spill Prevention & Response Division



Texas General Land Office  
Dawn Buckingham M.D. Commissioner



# LAW



**Oil Spill Prevention & Response Act of 1991 (OSPRA) designated the Texas General Land Office (TGLO) as the lead state agency for preventing and responding to coastal and marine oil spills.**



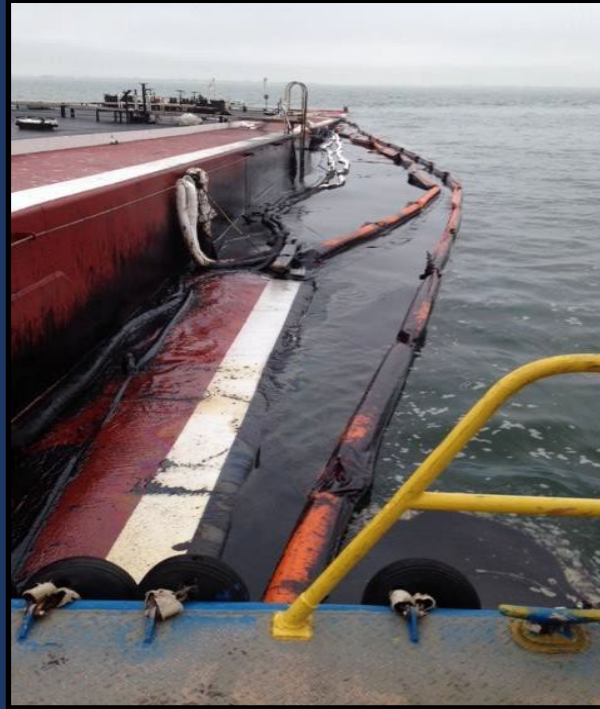
# MISSION STATEMENT

The mission of the Texas General Land Office, Oil Spill Prevention & Response Program during an Oil Spill is to provide the highest level of safety and response for the people of Texas.





# SPILLSPILLS



Approximately  
**700** spills  
reported per  
year





# Spill Reporting Requirements

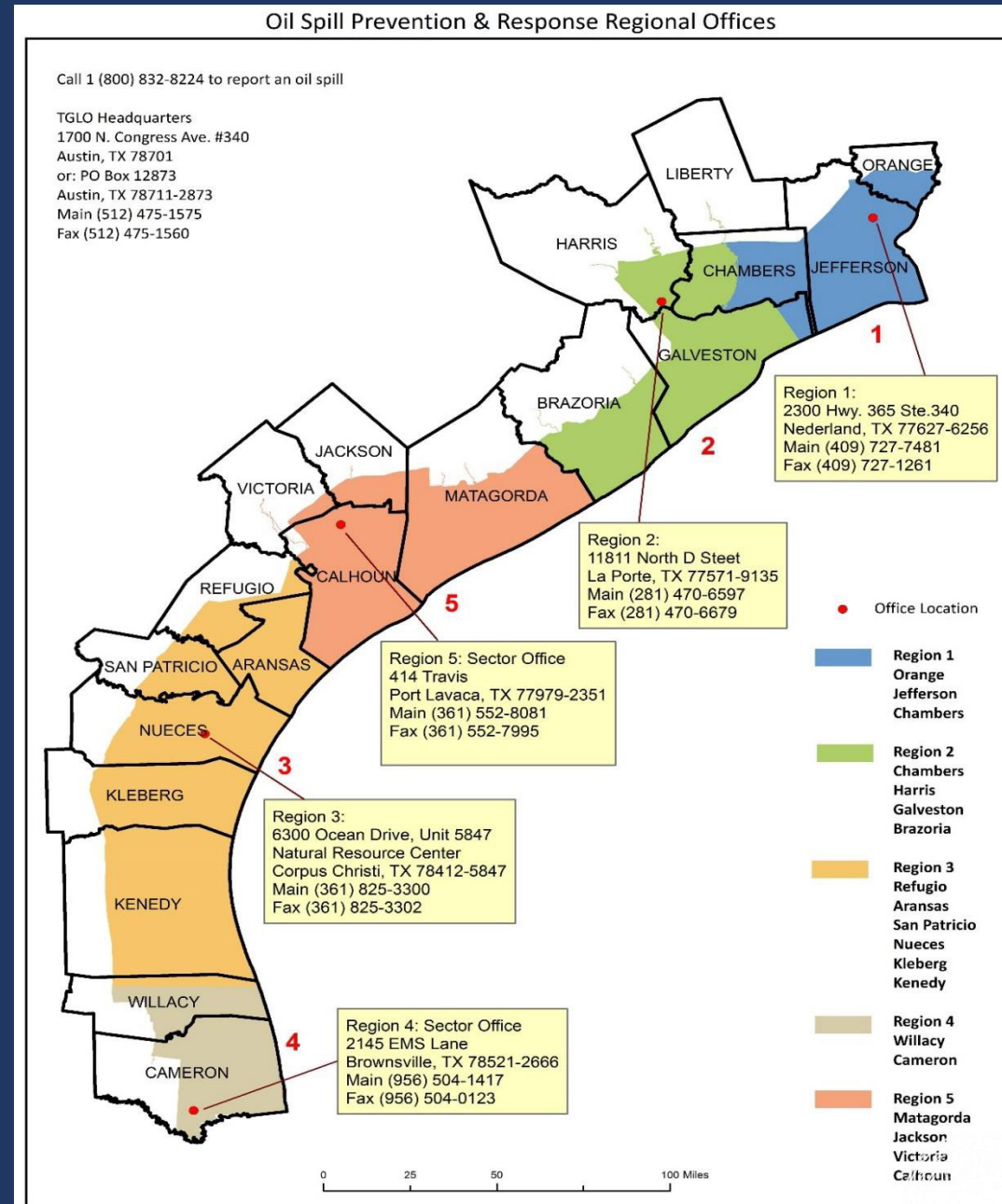
- **Statewide Spill Reporting Line**
  - 1-800-832-8224
- **1-hr notification requirement**
- **24/7 365 GLO response**
- **Keep in mind**
  - Accurate call back number
  - Accurate location (Lat/Longs, ICWW mile markers, Dock #, etc.)



# Five Field Offices

The program has five offices strategically located along the Texas coast, allowing for a two-hour response time to any oil spill notification.

Each office maintains state-owned vehicles, boats, spill response equipment and communication capabilities in a response-ready condition.





# RESPONSE BOATS



# NEW EQUIPMENT

Our office will be acquiring new equipment in the next few years including:

- Safe Boat (25ft) for offshore inventory and spill response
- New Airboat
- New Skiff
- Four wheelers for accessing Texas Point

We also recently acquired a new drone for each regional office

- Skydio X10 VT300-Z model





# NEW OFFICE LOCATION



We will be moving into a new office December 1<sup>st</sup>, 2024. We are moving from the Atrium Building in Nederland to Port Neches.

This office will be collocated with our warehouse which will allow better access to our equipment and improved response times.

**Texas General Land Office  
Oil Spill Division Region 1  
239 Grigsby  
Port Neches, TX 77651**



# PARTNERSHIPS

We work closely with many agencies such as...

- U.S. Coast Guard
- Environmental Protection Agency
- Texas Commission on Environmental Quality
- Railroad Commission of Texas
- Texas Parks and Wildlife Dept.
- National Oceanic and Atmospheric Administration
- Texas Dept. of Transportation
- Texas Dept. of Public Safety
- ...and many others





# HURRICANE BERYL RESPONSE

- Command Post: Sector Houston-Galveston
  - TGLO and USCG joint operation
- On-water Assessments
  - Identifying and documenting sunken vessels
  - Identifying navigation hazards
  - Investigating oil spills
- Vehicular Assessments
  - Identifying areas of beach erosion
  - Identifying and documenting orphan containers



# Eric Robertson

Region 1 Manager

[eric.robertson@glo.texas.gov](mailto:eric.robertson@glo.texas.gov)

(409) 284-1660





**ON – CALL 24 HOURS**

**Report Oil Spills  
Immediately to**

**1-800-832-8224**





**Texas General Land Office**  
**Oil Spill Prevention and Response**  
**P.O. Box 12873**  
**Austin, Texas 78711-2873**  
**[www.glo.texas.gov](http://www.glo.texas.gov)**  
**512-475-1575**

**Report a Spill: 800-832-8224**



Texas General Land Office  
Dawn Buckingham M.D. Commissioner



**Full Committee Meeting**  
**24 October 2024**