
Real-time and Predictive Coastal Intelligence

Company Overview



- MarineLabs Data Systems Inc. – A coastal intelligence company
- Canadian Owned and Operated - Victoria, BC
- Incorporated Feb. 2017
- 24 Employees
- Operational on both East and West Coasts of North America



Problem

Port size remain the same,
but ships are getting larger
and weather more volatile.



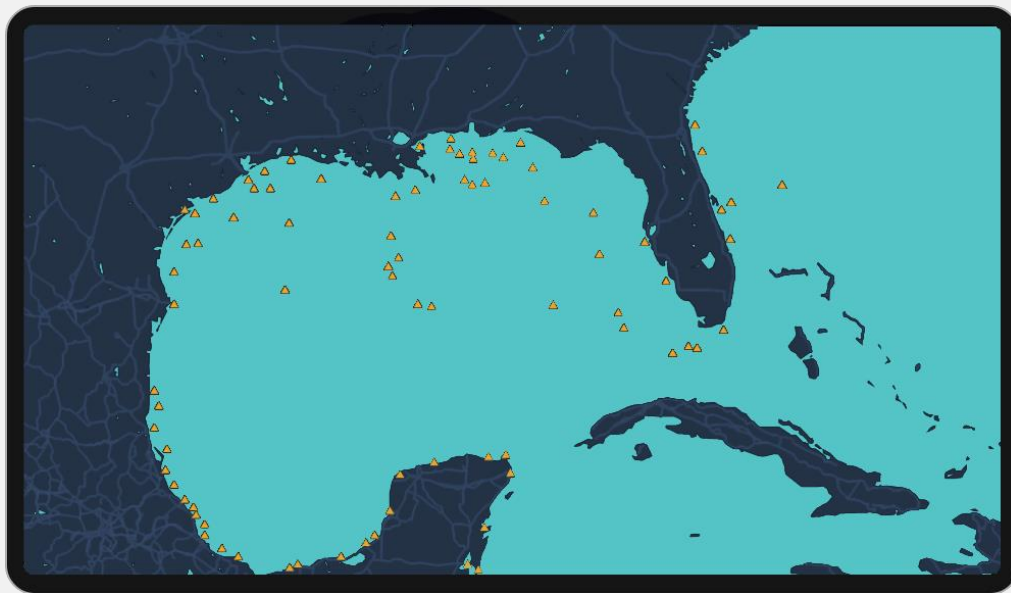
MarineLabs
DATA SYSTEMS

Solution

Every float in the world
should be a real-time data
station.

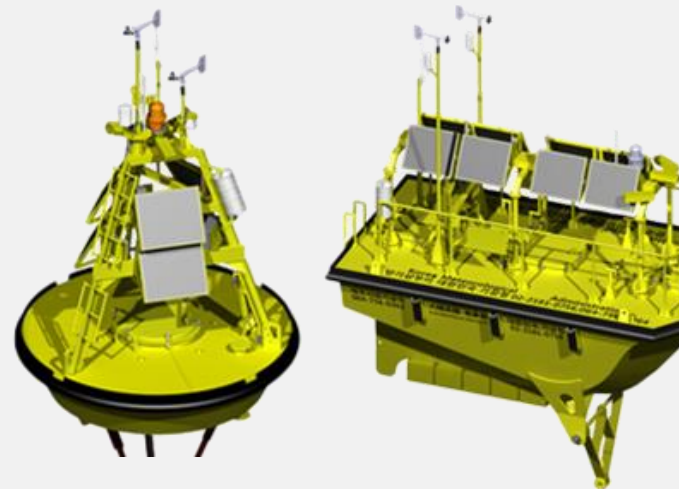
Problem

SOUTHEAST US – TODAY | CURRENT ODAS NETWORK



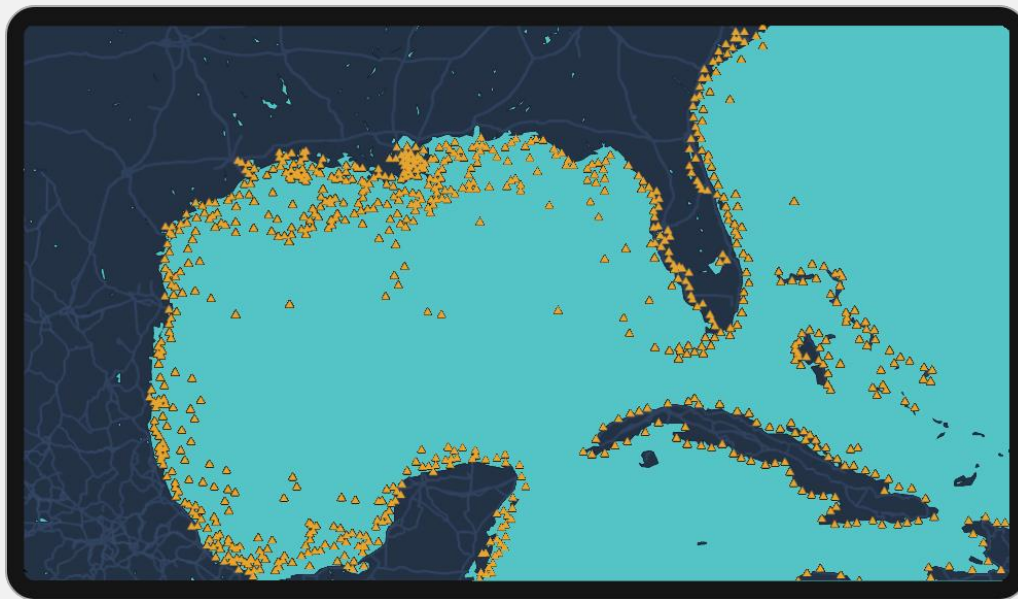
LEGACY ODAS BUOYS

THOUSANDS GLOBALLY
COST: \$250k – \$1.5M EACH



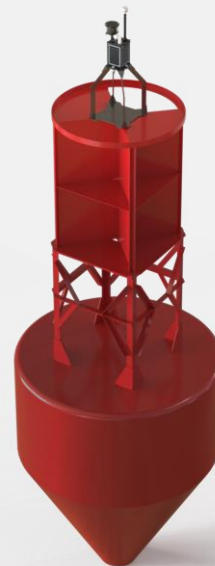
Solution

SOUTHEAST US – FUTURE | POTENTIAL NETWORK



EXISTING BUOYS

AMOUNT: TENS OF
THOUSANDS IN THE US ALONE



Why? Marine safety and port efficiency

October 31, 2024

Why?

Protect coastlines and communities.

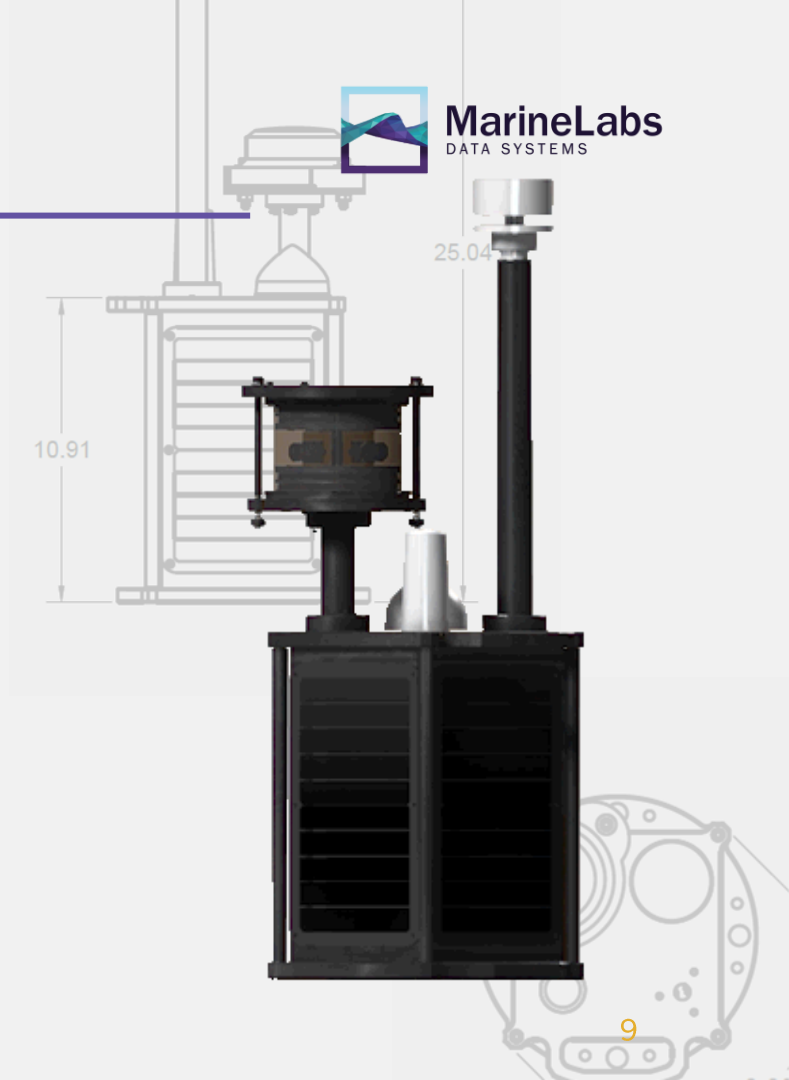
How We Do It

Rapid-deploy, solar powered, self contained sensor nodes collect new real-time data:

- Wind
- Wave
- 360-Degree Cameras
- Vessel Wake Detection



MarineLabs
DATA SYSTEMS

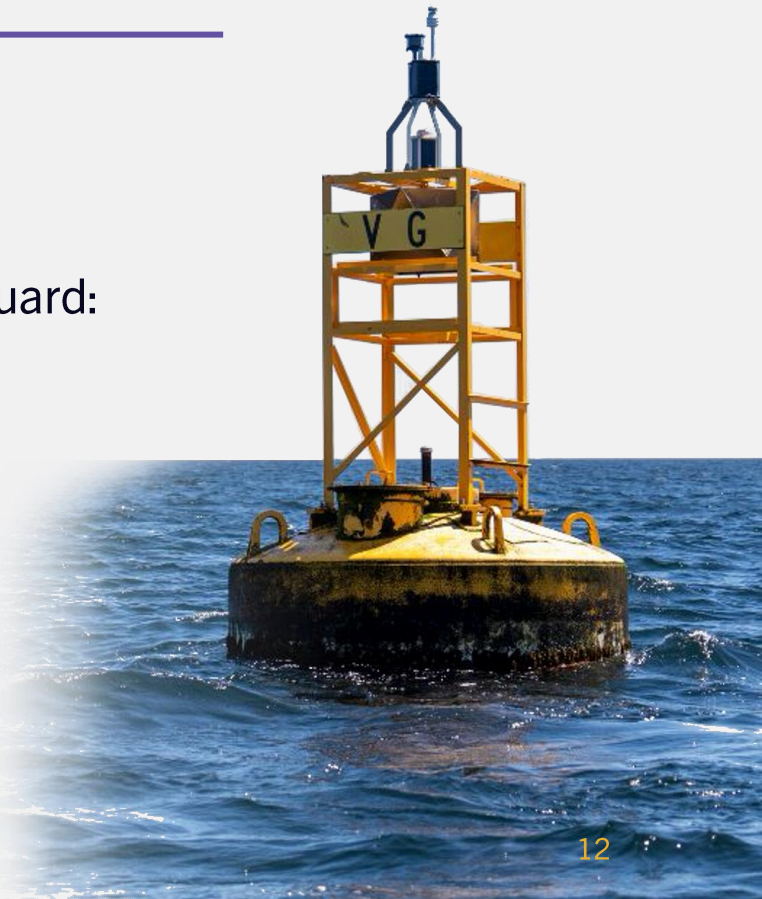


Turns any navigation buoy
into a **Smart Buoy**.



Turns AtoN into Smart Buoys

- Mounts on standard cage above lantern
- No modifications to AtoN
- MarineLabs works with and benefits to CoastGuard:
 - Asset management
 - Weather intelligence





MarineLabs
DATA SYSTEMS

October 31, 2024

13

Also Works on Small Buoys

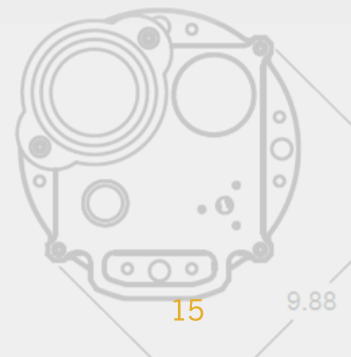
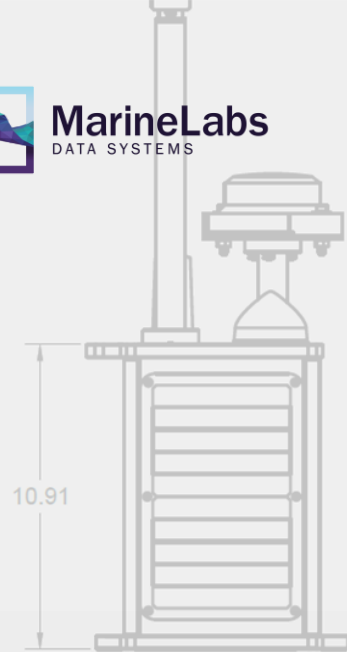
- 0.9m diameter
- ~80kg
- Max 4kn current, ~200m (~650') water depth
- Meets or exceeds all private buoy regulations
- MarineLabs handles the anchor/mooring/float and all maintenance.
- Often deployed for specific Port monitoring – weather intelligence, climate resilience, vessel wake detection



Subscription Based Service



- MarineLabs owns and operate the hardware
- Subscriptions to Port/Pilots/Industry
- Charge per month per location
- Data access by phone, browser, API



CoastAware



- A new benchmark in weather intelligence.
- Real-time, machine learning-enabled weather insights and forecasting to validate critical decisions and improve safety.



CoastAware

- Fully-managed, hassle-free operations
- Real-time updates and API integration
- Customizable alerts and views
- Use existing locations, commission new ones, or convert AtoNs



BuoyCam

Real-time eyes-on-the-water



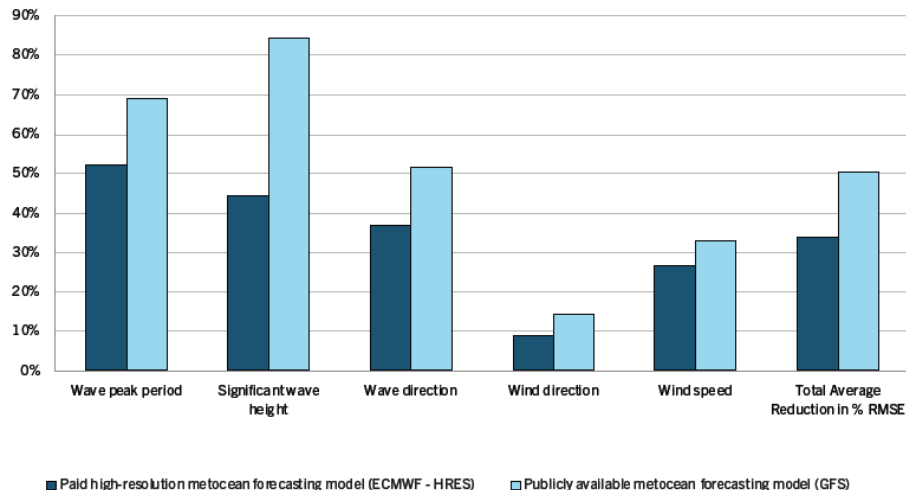
Forecast AI

- Accurate, hyper-local forecasts that account for each location's unique characteristics and geography
- Consistently outperforms trusted third-party models
- More accurate predictions you can rely on



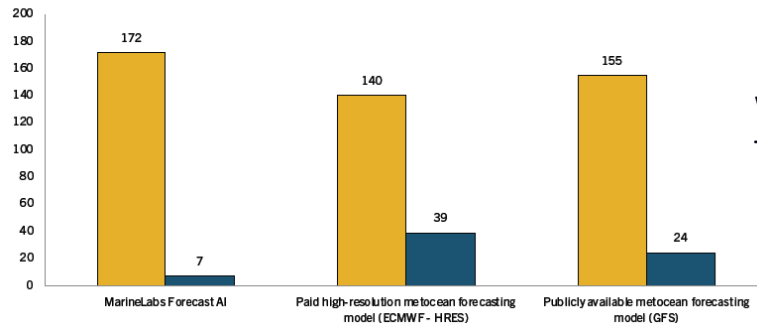
Forecast AI - Performance

average % reduction of RMSE for MarineLabs Forecast AI compared to:



Correct vs. incorrect operational work shift window calls due to significant wave height at 24-hour decision time threshold

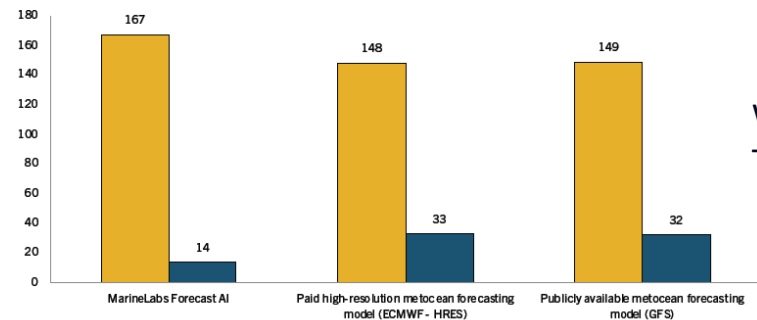
Correct Incorrect



Wave 1.5m
Threshold

Correct vs. incorrect operational work shift window calls due to wind speed at 12-hour decision time threshold

Correct Incorrect



Wind 20kn
Threshold

Reliability in Numbers



Single ODAS buoy

Fleet of Sensor Nodes

Reliability in Numbers

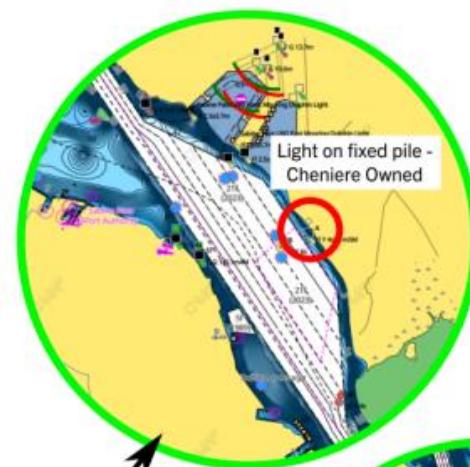


If your ODAS goes down, you have nothing

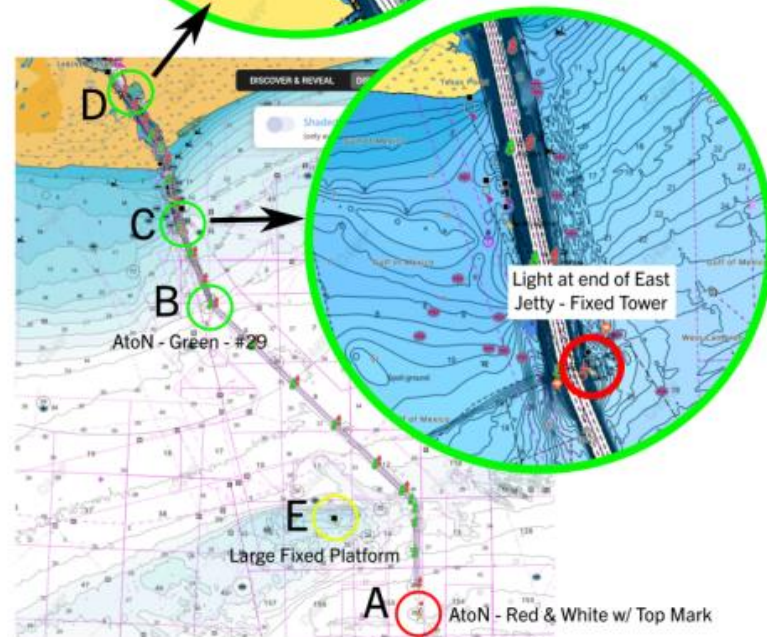
If one node goes down, you have 4 others

Sabine Pass Summary

- 5 locations along channel
- 4 on fixed structures, 1 on a buoy
- First deployments by end of 2024



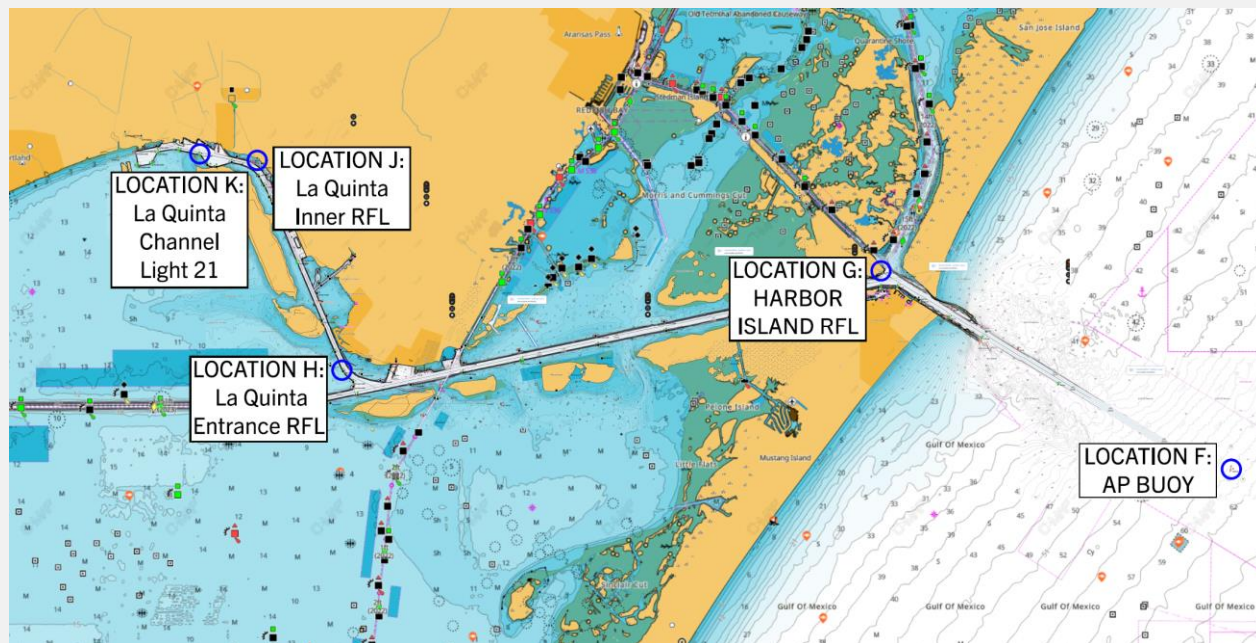
CHENIERE



October 31, 2024

Corpus Christi Summary

- 5 locations along channel
- First deployments in 2025



Testimonials



“We simply wouldn’t be able to smoothly support the new class of ships without MarineLabs data.”

BRENT BAXTER

Harbour Master (ret’d), Prince Rupert Port Authority

Testimonials



“MarineLabs transform weather data into actionable insights. Their forecasting solution empowers my team to help optimize resource allocation, enhance safety, and improve overall port efficiency through informed strategic planning.”

COMMANDER (RET'D) COREY GLEASON

MMM, MSC, CD, PME

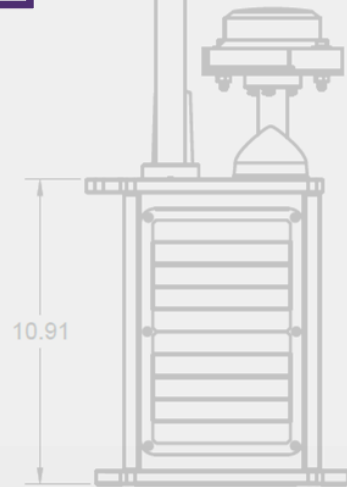
Deputy Harbour Master – Port of Halifax

Why do Maritime Operators Care?



MarineLabs
DATA SYSTEMS

- Handle larger ships in tight weather margins
- 360 cams help determine visibility
- Reduce unforeseen weather delays and cancellations
- Incident/Accident avoidance
- Data is more frequent, more reliable
- Subscription service is tailored to your workflows





Thank you!
Reach us at
sales@marinelabs.io