



**Full Committee Meeting  
26 October 2023**

# Navigation Subcommittee Report

Captain Andrew Guidry, Sabine Pilots





# Discuss Dredge Communications



# Controlling Depth Letter



# Three Month Helicopter Trial

# Sabine Pilot 3 Month Helicopter Trial

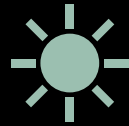
Start Date January 1, 2024



# Breakdown of Trial



Three-month duration



First two months daylight only



Third month 24 hour a day operation



Pilot boat will used to board vessels at our inner boarding station near buoys 29 & 30 and SB buoy at times

# Colombia River Bar Pilots

1. Where idea of trial period came from
2. They started with trial period.
3. Using helicopters for pilot delivery for 20 - plus years.
4. No serious injuries in over 50,000 cycles.
5. Prior to helicopter delivery 6 ships crewmen and two pilots were lost overboard.



# MD 902 helicopter

Capable of  
Carrying up to  
three Sabine Pilots  
per trip



# Training Pictures



Pilots will  
be lowered  
down to  
ships By  
wireline





# Information we hope to gather from trial

1. Will the helicopter allow us to board vessels when the wind and sea conditions prevent use of pilot boats?
2. Can we get traffic moving faster after an extended shutdown period?
3. Will the helicopter allow us to move more traffic in short limited weather windows?
4. Total cost of helicopter pilot delivery?
5. Will the helicopter allow us to provide same level of service to new SB buoy as we do to the existing SB buoy?
6. Can we eliminate injuries to ships' crew while rigging pilot ladders and to Pilots when boarding by pilot ladder?

# Funding for trial

- Trial will be funded by a four - month increase in the Sabine Bank Pilots transportation/boat fee.
- The present fee is \$1,025 per vessel. The temporary fee will be approximately \$2,480 per pilot delivered.
- The temporary increase will extend longer than the trial to lower the per-pilot fee as well as show what the estimated charge would be if Sabine Pilots went to Helicopter pilot delivery on a full-time basis. Full-time helicopter delivery rates are estimated to be less than the monthly trial rate.



Questions and Comments?



# Virtual Aid





# **Tug Utilization Sub-Committee Report (Ad Hoc)**

**Captain Sean Marchant, Valero**



# **Ed, Research and Workforce Development Sub-Committee Report**

**Rob Dubois, Lamar University**



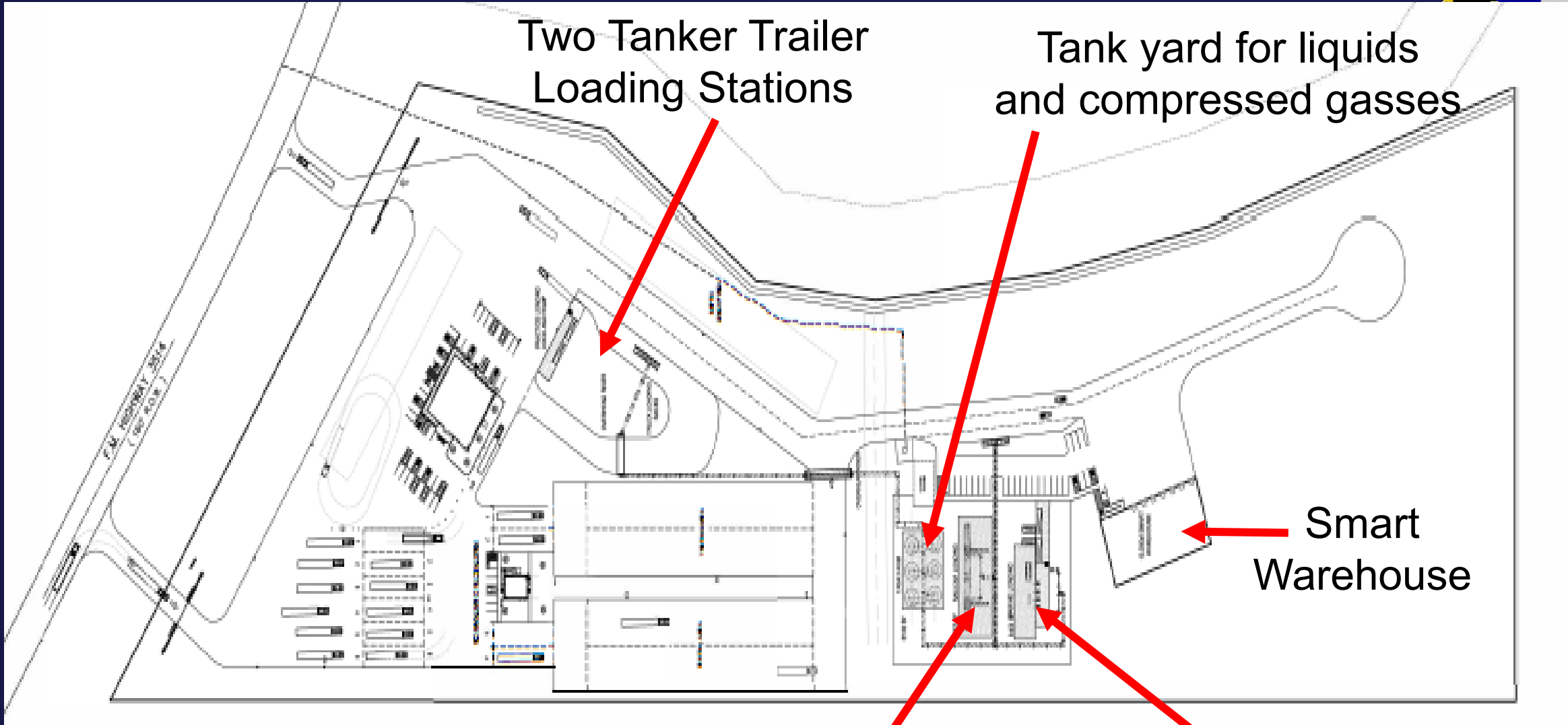
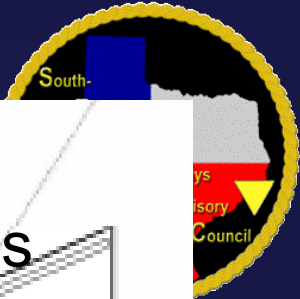
# Report on Grant

**Dr. Ben Stafford, LSCPA**



# Maritime

**Dr. Keith Jones, LSCO**



Two Tanker Trailer Loading Stations

Tank yard for liquids and compressed gasses

Smart Warehouse

Rail Car Loading Station

Maritime Loading Station



# **SEAFARER WELFARE SUBCOMMITTEE**

Southeast Texas Waterway Advisory Committee

October 26, 2023

# Seafarer Access

- Per 33 CFR 105.237, each owner or operator must provide access through their facility at no cost to the individuals covered.
  - Individuals Covered: Seafarers assigned to a vessel at their facility, pilots, and representatives of seafarer's welfare and labor organizations.
  - Timely Access: Access must be provided without unreasonable delay.
  - The facility must document the system in the Facility Security Plan (FSP).
- If there are any issues encountered with Seafarer Access, contact the MSU Port Arthur Facilities Division.
  - Phone: (409) 460-0640
  - E-Mail: [MSUPortArthur-FAC@uscg.mil](mailto:MSUPortArthur-FAC@uscg.mil)

# SETWAC Seafarers' Welfare Committee

Fr. Sinclair Oubre, J.C.L., AFNI

1500 Jefferson Drive

Port Arthur, Texas 77642

Phone: 409-749-0171

Email: [Sinclair.Oubre@stellamarismail.org](mailto:Sinclair.Oubre@stellamarismail.org)

Facebook: [www.facebook.com/Stella-Maris-Diocese-of-Beaumont-107480633974106](https://www.facebook.com/Stella-Maris-Diocese-of-Beaumont-107480633974106)





**Questions?**

**Thank You**



# COMMERCIAL FISHERMEN

Southeast Texas Waterway Advisory Committee



Propose Draft Letter  
to  
Department of Commerce



**Waterway Maintenance and Improvement  
Subcommittee Report**  
Kyle Reed, Sabine-Neches Navigation District



# Pipeline Update

# Sabine-Neches Waterway

## Operations and Maintenance Update

**Timothy J. White, P.E., PMP**  
**Resident Engineer**

**Sara C. Knoll, P.E.**  
**Operations Manager**

**USACE – Galveston District**

*SETWAC Meeting*  
*October 26, 2023*



®

US Army Corps of Engineers  
**BUILDING STRONG**®



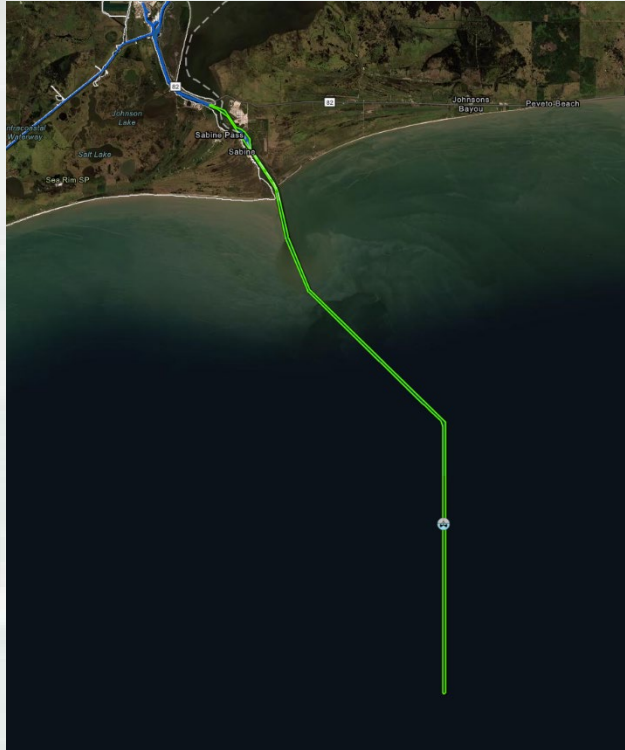
# Ongoing Contracts

## Sabine-Neches Waterway





# SABINE-NECHES WATERWAY ENTRANCE CHANNEL TO SABINE PASS DEEPENING



Hopper dredge Stuyvesant working in  
Sections 14 – 18  
Mechanical dredge Paula Lee working in  
Sections 17 & 18

<b>Project:</b>	Sabine-Neches Waterway – CIP (Contract #2A – Half Depth – Extension Channel to Sabine Bank)
Dredging Depth:	44 feet + Adv Maint
Dredging Quantity:	Est. 9 MCYs Federal Contract
Material Type:	<b>NEW WORK</b>
Placement Areas:	ODMDS 1-4 and A-D
Type of Equipment:	Hopper
Award:	September 2021
Req. Completion	November 2023

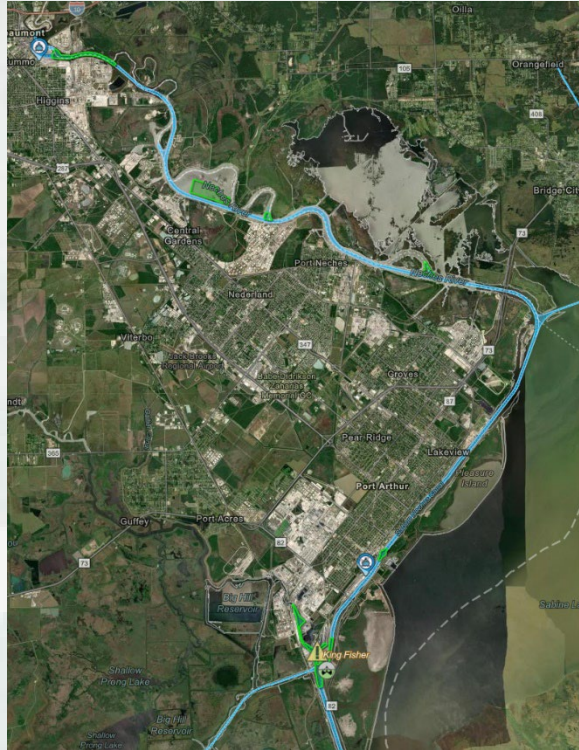
Contractor: Dutra







# SABINE-NECHES WATERWAY FY23 SNWW Maintenance Dredging



Dredge Heriberto Cordova working in the Junction, Section 9A.

<b>Project:</b>	<b>Sabine-Neches Waterway FY23 SNWW Maintenance Dredging</b>
Dredging Depth:	40ft + Advance Maint.
Dredging Quantity:	3 MCY
Material Type:	<b>MAINTENANCE</b>
Dredge Type	Pipeline Dredge
Award:	August 2023
Req. Completion	July 2024

Contractor: Orion



**BUILDING STRONG®**

**FY 2024**

**Future Dredging Contracts**

**Sabine-Neches Waterway**

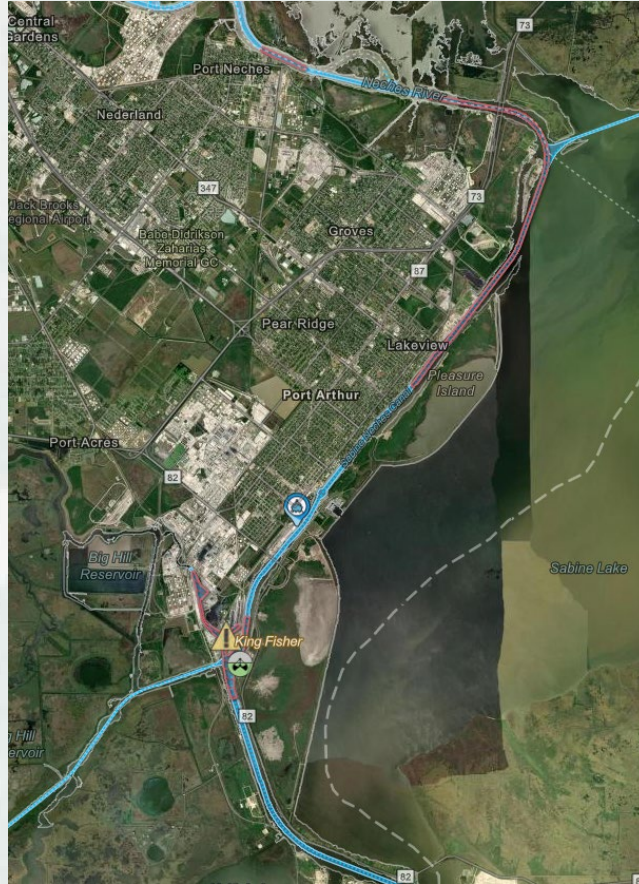


---

**BUILDING STRONG®**



# SABINE-NECHES WATERWAY FY24 SNWW Maintenance Dredging



<b>Project:</b>	<b>Sabine-Neches Waterway FY24 SNWW Maintenance Dredging</b>
Dredging Depth:	40ft. Authorized Depth
Dredging Quantity:	Est. 4.9 MCY
Material Type:	<b>MAINTENANCE</b>
Dredge Type	Pipeline Dredge
Advertisement	April 2024
Bid Opening	May 2024
Award:	July 2024
Est. Completion	February 2025

Contract includes Sabine-Neches Canal, Lower Neches River, and options for Junction, Taylor's Bayou, and Turning Basin at Smith Bluff.





# SABINE-NECHES WATERWAY SABINE BANK TO SABINE PASS DEEPENING



<b>Project:</b>	<b>Sabine-Neches Waterway Sabine Bank Channel to Sabine Pass Channel Half Depth (Contract #2B)</b>
<b>Dredging Depth:</b>	46/44 feet + Adv Maint.
<b>Material Type:</b>	<b>NEW WORK</b>
<b>Award:</b>	SNND: November 2023

To be awarded by SNND.

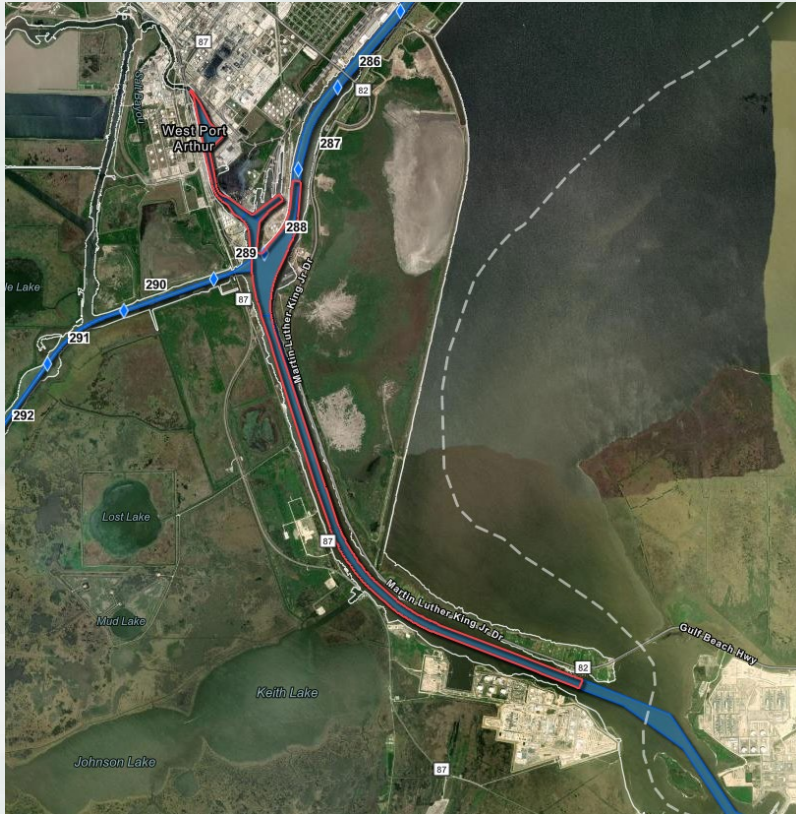
Contractor: TBD



**BUILDING STRONG®**



# SABINE-NECHES WATERWAY PORT ARTHUR CANAL & TAYLOR'S BAYOU DEEPENING



<b>Project:</b>	<b>Sabine-Neches Waterway Port Arthur Canal, Taylor's Bayou Half Depth (Contract #3)</b>
Dredging Depth:	44 feet + Adv Maint.
Material Type:	<b>NEW WORK</b>
Award:	SNND: FY24

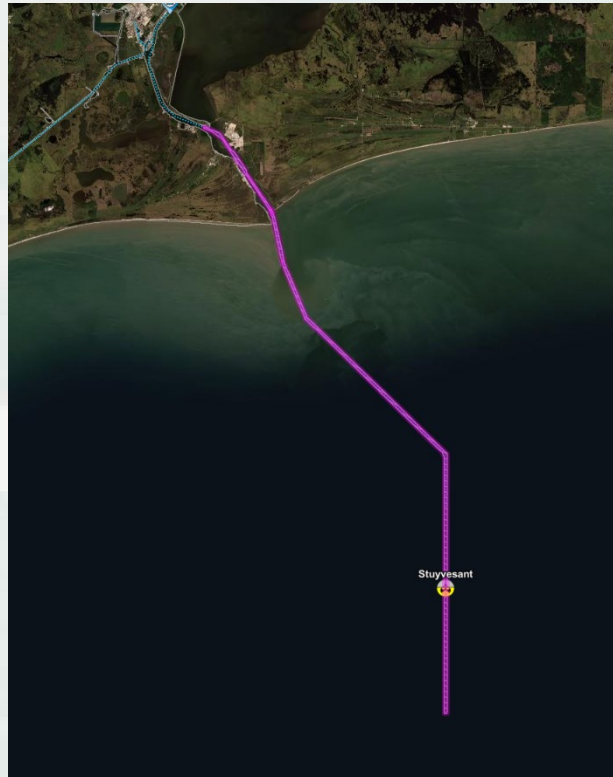
To be awarded by SNND.

Contractor: TBD





# SABINE-NECHES WATERWAY EXTENSION CHANNEL TO SABINE PASS DEEPENING



<b>Project:</b>	Sabine-Neches Waterway – CIP (Contract #6 – Full Depth – Sabine Entrance Channel)
Dredging Depth:	48/50 feet + Adv Maint.
Material Type:	<b>NEW WORK</b>
Award:	USACE: FY 24

To be awarded by USACE.  
Contract 6A & 6B combined.

Contractor: TBD

POC:  
Franchelle Nealy  
Project Manager  
409-766-3187



**SABINE  
TO GALVESTON**

**PORT ARTHUR**

**&**

**ORANGE**



---

**BUILDING STRONG®**



# Orange County Coastal Storm Risk Management Project



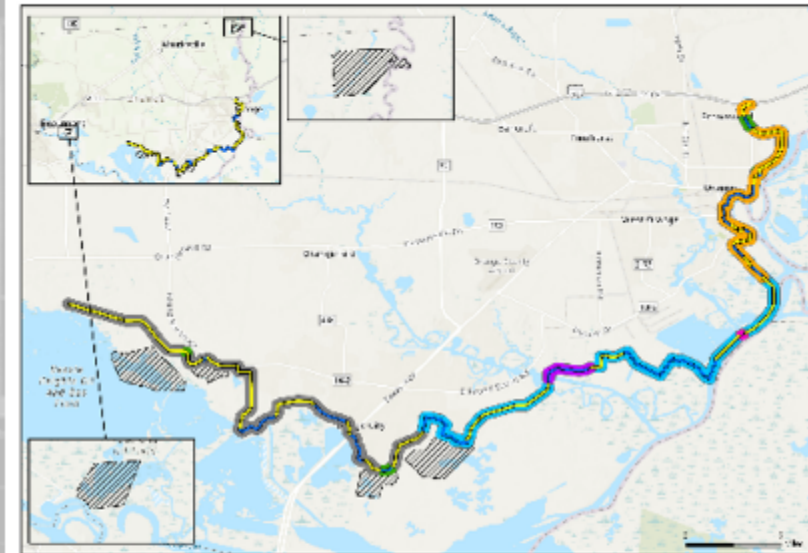
US Army Corps of Engineers

## A new levee/floodwall system:

The Orange County Coastal Storm Risk Management (CSRM) Project includes construction of a new levee/floodwall system to reduce storm surge damage caused by hurricane and tropical storm events that affect the southern half of Orange County along the Sabine River and Bessie Heights Marsh. The proposed project alignment follows the edge of the Sabine and Neches River floodplain from the City of Orange and ends West of Bessie Heights, measuring approximately 26.3 miles. This includes construction of 15.6 miles of levees, 10.7 miles of floodwalls, 7 pump stations, 56 internal drainage structures, 32 closure gates located at road and railway crossings, 2 navigable sector gates and 6 environmental mitigation areas.

## Objectives:

The new CSRM Project is intended to reduce risk to human life and reduce economic damages to business, residents, and infrastructure from storm surge while ensuring no **additional** induced interior flooding.



Orange County Coastal Storm Risk Management Project

Levee  
 Floodwall  
 Closure Gate  
 Navigable Sector Gate  
 Environmental Mitigation Area  
 Contract OC01  
 Contract OC02  
 Contract OC03  
 Contract OC04  
 Contract OC05  
 Contract OC06

## Project Schedule:



Contract #	Scope	Contract #	Scope
OC01	Cow Bayou Complex – 84 ft Navigable Gate, Pump Station	OC04	7 Pump stations, tie ins, gates, drainage structures
OC02	2.4 miles floodwall, 3.0 miles levee, 18 gates, drainage structures	OC05	2.6 miles floodwall, 7.6 miles levee, 7 gates, drainage structures
OC02A	4.2 miles floodwall, 4.9 miles levee, 5 gates, drainage structures	OC06	6 Mitigation sites to compensate for impacts to forested wetlands and estuarine marsh
OC03	Adams Bayou Complex – 84 ft Navigable Gate, Pump Station		







# Port Arthur and Vicinity Coastal Storm Risk Management Project



US Army Corps of Engineers

## Reinforcement of an existing levee/floodwall system:

The Port Arthur and Vicinity Coastal Storm Risk Management (CSRM) Project in Jefferson County will result in improvements and additions to the existing Hurricane Flood Protection Project (HFPP). The plan includes raising approximately 5.5 miles of the existing 27.8 miles of earthen levee and constructing or reconstructing approximately 5.7 miles of floodwall. A separate 1,830 feet of new earthen levee will be constructed in the Port Neches area northwest of the existing northern terminus. Additionally, 26 vehicle closure structures will be replaced and erosion protections will be added.

## Objectives:

The improved CSRM system is intended to increase the level of performance and resiliency of the existing Port Arthur and Vicinity HFPP.



Road closure gate



Port Arthur and Vicinity Coastal Storm Risk Management Project



## Project Schedule:

Q1 FY19

Design

PPA Signed  
29 Nov 2019

Q2 FY20

Construction

Q1 FY27

Contract #	Scope	Contract #	Scope
PAV01	1.1 miles levee raise	PAV03A	3.3 miles levee raise, 1.9 miles floodwall replacement, 1 gate
PAV02	0.2 miles floodwall replacement	PAV03B	0.02 miles levee raise, 0.5 miles floodwall replacement, 7 gates
PAV03	0.1 miles levee raise, 1.0 miles floodwall replacement, 11 gates	PAV04	0.4 miles levee raise, 0.4 miles new levee, 2.0 miles floodwall replacement, 3 gates



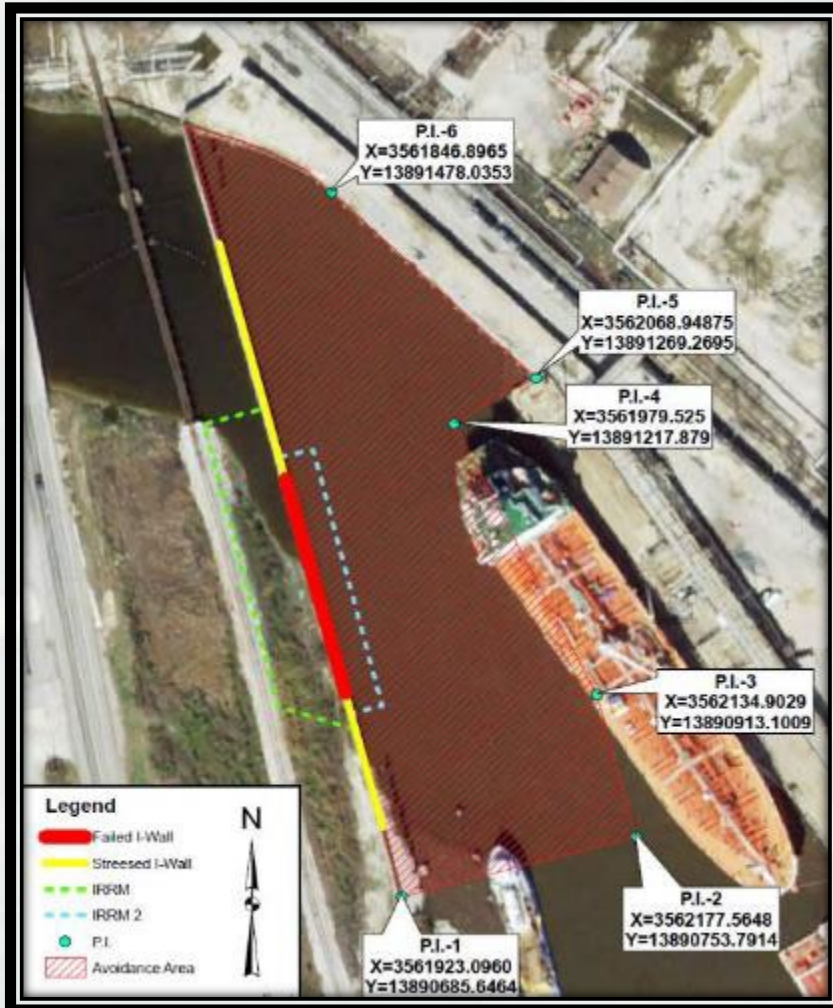
# Taylor's Bayou



---

**BUILDING STRONG®**

# Taylor's Bayou Current Restrictions



## Current Status:

- Vessel Traffic Allowed in Hatched Area shown in Figure WITH LIMITATIONS put on tugs.
- Wall and temporary protection is being monitored by DD7 and USACE.



# Taylor's Bayou Proposed Channel Improvement Changes



Current



Proposed



**BUILDING STRONG®**

# Taylor's Bayou Proposed Channel Improvement Changes



Current



Proposed



**BUILDING STRONG®**

# Questions?



**Sara C. Knoll, P.E.**  
**CESWG-ODN**  
**409-207-3131**  
[sara.c.knoll@usace.army.mil](mailto:sara.c.knoll@usace.army.mil)

**Timothy J. White, P.E., PMP**  
**CESWG-ECC-NP**  
**409-985-2000 ext.1412**  
[timothy.j.white@usace.army.mil](mailto:timothy.j.white@usace.army.mil)



**BUILDING STRONG®**

# MSU Port Arthur Port Security Specialist



**Michael J. Hiatt**

409-284-5775 Mobile

409-723-6525 Desk

**[Michael.j.hiatt2@uscg.mil](mailto:Michael.j.hiatt2@uscg.mil)**

# Southeast Texas and Southwest Louisiana Area Maritime Security Committee

---

Port Security Grant Program: FY23 announced and SETX and SWLA received over \$4.2 million.

PSGP FY24 Starts now. Don't think about today when submitting grants, think several years into the future of what your facility/vessel/port will be undertaking . The mission and threats can change overnight. Prepare yourself for that change with providing the best possible security available to us today. Think about replacing aging security assets that no longer meet your requirements. Our Cyber Security Specialist and myself are hear to assist or point you in the right direction. Also utilize your fellow port partners who have been succesful with grants.

SWLA Subcommitte Meeting 15 November 2023 9am Freedom Hall, Westlake LA. 1000 National Drive, Westlake LA

Port Readiness Committee (PRC) meeting today at 12:30 today. Members only, closed door meeting.

FSO Subcommitte Meeting 7<sup>th</sup> of December 2023 (Seafares Center) Hosted by Port of Port Arthur.

AMSTEP Seminar November 29<sup>th</sup> at MSU Port Arthur

The 2023 Southeast Texas and Southwest Louisiana AMSTEP SEMINAR will be a 3 hour discussion based exercise focused on response to a simulated cyber attack to include a Transportation Security Incident occurring in the Port of Port Arthur Area. Discussion on how to mesh cyber and physical security



# Port Security Grants Program

FEMA Grant POC:

Lurranda “Rene” Phillips

(202)368-5487 Work Mobile

(202)786-9735 Desk

[Lurranda.Phillips@fema.dhs.gov](mailto:Lurranda.Phillips@fema.dhs.gov)

**If you have questions pertaining to your FY23 PSG please reach out to FEMA for details.  
The USCG is unable to comment on why and why not!**

## Questions?

**Michael J. Hiatt**

409-284-5775 Mobile

409-723-6525 Desk

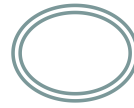
**[Michael.j.hiatt2@uscg.mil](mailto:Michael.j.hiatt2@uscg.mil)**

# USCGC ANT Sabine

## ATON REPORT



# QUESTIONS/COMMENTS ?





**Harbor Safety Conference**  
**20-21 March 2024**  
**Chicago, IL**

# VTS/WATERWAYS CONTACTS



- **Kimberly Gates, Chief Waterway, [kimberly.m.gates@uscg.mil](mailto:kimberly.m.gates@uscg.mil)**
- **Douglas Hendrix, Acting Director VTS Port Arthur,  
(409) 719-5086 [douglas.g.hendrix2@uscg.mil](mailto:douglas.g.hendrix2@uscg.mil)**
- **Vessel Traffic Center, Watch Supervisor 24hrs  
(409) 719-5070 [msuportarthur-vtssup@uscg.mil](mailto:msuportarthur-vtssup@uscg.mil)**
- **VTS Webpage – <https://www.atlanticarea.uscg.mil/vtsportarthur/>**
- **Homeport Website – <http://homeport.uscg.mil>**

# Mark Your Calendars

## Upcoming SETWAC Meetings



### *Working Group Meeting*

Thursday, January 11, 2024

10:00 am

Sabine-Neches Navigation District Office

### *Full Committee Meeting*

Thursday, January 25, 2024

10:00 am

MSU Port Arthur

