



**Full Committee Meeting**  
**28 January, 2021**



# **Managing Board Discussion**

## **Refineries and Chemical Companies**

**Mr. Scott Whalen, USCG**

# SETWAC Managing Board Voting Membership



Chemical and Oil Refining Docks			
(P)			
(A) Bryan Markland	Lucite	7/24/2020	7/23/2023

Commercial Fisheries Association			
(P) Nikki Fitzgerald	Texas A&M AgriLife	7/24/2020	7/24/2023
(A)			

Shipping Agents			
(P)			
(A)			

# Navigation Subcommittee Report

Captain Charlie Tweedel, Sabine Pilots







# Martin Midstream WSA



# Comments on Anchorage Basin 1



# Education, Research and Workforce Development Subcommittee Report

Mr. Erik Stromberg, Lamar University



CENTER FOR  
ADVANCES IN PORT MANAGEMENT  
**LAMAR UNIVERSITY**

**CAPM'S SURVEY OF SETWAC  
MEMBERS ON WEBINARS RESULTS**

*For participation in planning please contact Erik Stromberg  
at [rstromberg@lamar.edu](mailto:rstromberg@lamar.edu) or 910-617-6800.*

MEMBER **THE TEXAS STATE UNIVERSITY SYSTEM™**

# Proposed Workshops

- 2/11 SE Texas Flood Coordination Study
- March: Strategic Asset Management – Cost-effectively Optimizing Performance of Critical Assets
- April: Operational and Management Considerations in a Pandemic
- May: Hurricane Planning Webinar
- June: Facilities Cargo Movement Through Digital Technologies – Port Community Systems and Beyond
- July: Diversity and Inclusion (*Workforce Dev. Subcommittee*)
- September: Operational & Economic Opportunities with the new Sabine-Neches Ship Channel
- *October: Women in Texas Freight Transportation and Logistics (Workforce Development Subcommittee)*
- November: State of the Art Advances in Facility Planning and Management – Practical Application and Workforce Training

# Training Opportunity.

Could your company benefit  
from \$2,000 in training for each  
employee?

# Texas Workforce Commission

## Skills Development Fund COVID

- Employers will be awarded **\$2000** per eligible employee to cover **any** training costs
- Available to full-time, part-time, furloughed and laid off employees (companies will have to provide placement for furloughed and laid off employees)
- No limit on third party trainers
- Application turnaround time is 72 hours
- Any size company

Email Sade Chick, Port of Beaumont, for information [sc@pobtx.com](mailto:sc@pobtx.com)



# High demand positions in Southeast Texas

## What are we missing?

### IS A POSITION AS AN **ORDINARY SEAMAN** FOR YOU?



#### EDUCATION REQUIRED

High School Diploma / GED

#### EARNING POTENTIAL

\$130 per day or \$34,000 per year based on a five day work week, with potential for advancement.

#### CERTIFICATIONS / TRAINING

**LSCO**  
Basic Safety Training  
Deck Familiarization  
Line Handling  
TWIC Card

**CONTACT:**  
Captain Chris Horner  
LSCO Maritime Director  
(409) 882-3032  
maritime@lSCO.edu

#### JOB DESCRIPTION

The entry level job for a certified seaman in the deck department is the "Ordinary Seaman." In this apprentice position, you'll be a seagoing janitor who's learning to tie the ship up, how to tie proper knots and splice lines together, and correct maritime procedure according to the way the ship's master wants things done. The next step on the way to command is the "Able Seaman."

#### BECOMING AN ORDINARY SEAMAN

Obtain a TWIC card, complete U.S. Coast Guard approved training, obtain a Merchant Mariner Credential, complete training listed above at LSCO or other qualified institution.

#### BEING AN ORDINARY SEAMAN MEANS

Working outside **OPPORTUNITIES FOR GROWTH**  
**KNOWING HOW TO THINK CRITICALLY**  
Great fishing on your down time  
Flexible Hours **TRAVELING**

### IS A POSITION AS A **LOCOMOTIVE ENGINEER** FOR YOU?



#### EDUCATION REQUIRED

High School Diploma / GED

#### EARNING POTENTIAL

Average pay is \$60,000 per year with opportunities for advancement based on training.

#### SUGGESTED CERTIFICATIONS

Certification by the Federal Railroad Administration is required (approximately 6 months). Courses in economics, business, math, land surveying, accounting, engine repair and electronic circuits are beneficial.

#### JOB DESCRIPTION

Locomotive engineers drive electric, diesel electric, steam, or gas-turbine-electric locomotives to transport passengers or freight. They are responsible for interpreting train orders, electronic or manual signals, and railroad rules and regulations.

#### BECOMING A LOCOMOTIVE ENGINEER

Attend local hiring events where the Class I railroads are in attendance. Entry level positions require a high school diploma or GED.

#### BEING A LOCOMOTIVE ENGINEER MEANS

Working outside **OPPORTUNITIES FOR GROWTH**  
**KNOWING HOW TO THINK CRITICALLY**  
Having great attention **WORKING WITH YOUR HANDS**  
to detail **STAYING ALERT**

### IS A POSITION AS A **WELDER** FOR YOU?



#### EDUCATION REQUIRED

High School Diploma / GED

#### EARNING POTENTIAL

Average pay is \$58,000 per year. Experienced welders typically make more than \$100,000 per year.

#### SUGGESTED CERTIFICATIONS

**Welding Certification**  
1 Year certificate  
2 year degree  
Programs offered at LIT and LSCO  
16-week fast track available at LSCPA

**CONTACTS:**  
LIT- Pat O'Connor  
406-539-2004  
LSCO- Gary McClendon  
409-882-9967  
LSCPA- Amanda Metts  
409-984-6230

#### JOB DESCRIPTION

Welders use hand-welding, flame-cutting, hand soldering, or brazing equipment to weld or join metal components or to fill holes, indentations, or seams of fabricated metal products.

#### BECOMING A WELDER

Complete a one-year certificate program or two-year degree program at LIT, LSCO, LSCPA or a program at a qualifying high school.

#### BEING A WELDER MEANS

Working outside **Flexible Hours**  
**ATTENTION TO DETAIL**  
Dynamic and diverse work environment  
**OPPORTUNITIES FOR GROWTH** **WORKING WITH YOUR HANDS**

### IS A POSITION AS A **LONGSHOREMAN** FOR YOU?



#### EDUCATION REQUIRED

High School Diploma / GED

#### EARNING POTENTIAL

Average pay is \$32,900 per year. Experienced longshoremen can make more than \$100,000 per year.

#### SUGGESTED CERTIFICATIONS

**Fork Lift Operator**  
8 Hour Certification  
Lamar Institute of Technology  
Cost: Free

**CONTACT:**  
Angela Clark  
LIT  
Continuing Ed. Coordinator  
409-880-8114

#### JOB DESCRIPTION

Longshoremen load and unload freight from cargo ships to docks. Cargo is imported and exported from all over the world and can include anything from agricultural goods and paper products to shipping containers.

#### BECOMING A LONGSHOREMAN

Obtain a TWIC card, join the local union, start as a temporary employee. Opportunities for growth will become available with experience.

#### BEING A LONGSHOREMAN MEANS:

Working outside **OPPORTUNITIES FOR GROWTH**  
**Handling cargo from all over the world**  
Dynamic and diverse work environment **WORKING WITH YOUR HANDS**  
**Flexible Hours**

### IS A POSITION AS A **TRUCK DRIVER** FOR YOU?



#### EDUCATION REQUIRED

High School Diploma / GED

#### EARNING POTENTIAL

Average pay is \$32,900 per year. Experienced truck drivers can make more than \$80,000 per year.

#### SUGGESTED CERTIFICATIONS

**LIT- CDL Class A and B**  
Class A- 8 Week Course  
Class B- 4 Week Course  
Class A- \$3,000  
Class B- \$1,500

**LSCPA- CDL Class A and B**  
Class A- 12 Week Course  
Class B- 8 Week Course  
Class A- \$3,400  
Class B- \$1,800

#### JOB DESCRIPTION

Drive a tractor-trailer combination or a truck with a capacity of at least 26,000 pounds gross vehicle weight either locally or around the country. Drivers may be required to unload trucks and are responsible for checking vehicles to ensure the mechanical, safety, and emergency equipment is in good working order.

#### BECOMING A TRUCK DRIVER

Obtain CDL Class A or B through local technical school and reach out to local workforce offices. Trucking jobs are plentiful in Southeast Texas.

#### BEING A TRUCK DRIVER MEANS

**High Earning Potential** **Short Training**  
**TRAVELING AROUND THE COUNTRY**  
Commitment **CONSTANT ADVENTURES**  
to deadlines **Flexible Hours**

### IS A POSITION AS A **SHIP/BOAT CAPTAIN** FOR YOU?



#### EDUCATION REQUIRED

High School Diploma / GED / USCG License

#### EARNING POTENTIAL

\$275-\$350 per day with benefits and opportunity for advancement. Potential is approximately \$500-700 per day.

#### SUGGESTED CERTIFICATIONS

Contact Captain Chris Horner at Lamar State College Orange to identify preferred career path as certifications needed will vary. Potential paths include: 100-Ton Captain, 200-Ton Captain, 500-Ton Captain, 1,600-Ton Captain, Apprentice Mate of Tow, Mate of Tow, Master of Tow.

#### JOB DESCRIPTION

Steer and operate vessels using radios, depth finders, radars, lights, buoys, or lighthouses. Dock or undock vessels, sometimes maneuvering through narrow spaces, such as locks. Responsible for crew and all aspects of daily operation.

#### BECOMING A BOAT CAPTAIN

Complete all Coast Guard approved classes, test with Coast Guard and acquire necessary sea time which ranges from 720 days (8-hour days) in the last five years for a 100-ton captain to 1,500 days (8-hour days) throughout your career for Master of Two license.

#### BEING A BOAT CAPTAIN MEANS

**High Earning Potential** **STRUCTURE**  
**Meeting people from around the world**  
Continuous **SPENDING TIME ON THE WATER**  
learning **Opportunities for growth**

# Port Welfare Sub-Committee Report



## Southeast Texas Waterway Advisory Committee January 28, 2021

- Seafarer's Access
- Neptune Declaration
- *Lamar State College – Orange/Texas A&M Maritime Academy*

**Fr. Sinclair Oubre**

# Seafarers' Access to Maritime Facilities

## Final Rule:

- Fully Implemented June 1, 2020
- Regulates owner or operator of a USCG regulated maritime facility
- Applies to:
  - Seafarers
  - Pilots
  - Representatives of Seamen's Welfare Organization
  - Representatives of Labor Organizations
- In a timely manner and at no cost to the seafarer or other individuals
- Any facility implementing a third-party operated system of access will need to designate a supplemental method of access in case the third-party organization is unavailable or fails to provide access to seafarers at any time.
- Still running into situations with delays
- Facility must remember that it must transport in a timely manner if it refuses access to allow access to seafarers' center transport
- If seafarers center is unavailable, it must transport between ship & gate

# The Neptune Declaration on Seafarer Wellbeing and Crew Change

- From Global Maritime Forum with more than 300 signatories including 3 local organizations: Stella Maris – Diocese of Beaumont, The Nautical Institute – Gulf Houston Branch, Apostleship of the Sea USA
- Released January 28, 2021
- Goal: These actions should be implemented:
  - Recognize seafarers as key workers and give them priority access to Covid-19 vaccines
  - Establish and implement gold standard health protocols based on existing best practice
  - Increase collaboration between ship operators and charterers to facilitate crew changes
  - Ensure airline connectivity between key maritime hubs for seafarers
- [www.globalmaritimeforum.org/content/2020/12/The-Neptune-Declaration-on-Seafarer-Wellbeing-and-Crew-Change.pdf](http://www.globalmaritimeforum.org/content/2020/12/The-Neptune-Declaration-on-Seafarer-Wellbeing-and-Crew-Change.pdf)

# Lamar State College – Orange Maritime Program

Captain Chris Horner

# Ordinary Seaman I

## Award 45966 - Ordinary Seaman I - 490309

### Award Information

Award Action: Revise

Award Status: Approved

Award Type: C1 - Level 1 Certificate

Award Title: Ordinary Seaman I

Award CIP Code: 490309 - MARINE SCIENCE/MERCHANT MARINE OFFICER

Implementation Date: Sept. 1, 2021

Is this award taught at a correctional facility? No

Is this award Tech-Prep? No

### 1st Year

#### 1st Semester

Prefix	Number	Course Name	Course Type	Weekly Lec Hrs	Weekly Lab Hrs	Ext Hrs	Cont Hrs	Cred Hrs
NAUT	1370	Introduction to tugs and towing	Tech Local Need	3	1	0	64	3
EDUC	1300	<u>Learning Framework</u>	ACGM	3	0	0	48	3
NAUT	1372	Seamanship I	Tech Local Need	3	2	0	80	3
NAUT	1371	Introduction to Ships and Shipping	Tech Local Need	3	1	0	64	3
NAUT	1374	Basic Safety and Survival	Tech Local Need	3	2	0	80	3
<b>1st Semester Totals</b>				15	6	0	336	15

#### Program Totals



# Ordinary Seaman II

## Award 45967 - Ordinary Seaman II - 490309

### Award Information

Award Action: Add

Award Status: Approved

Award Type: C1 - Level 1 Certificate

Award Title: Ordinary Seaman II

Award CIP Code: 490309 - MARINE SCIENCE/MERCHANT MARINE OFFICER

Implementation Date: Sept. 1, 2021

Is this award taught at a correctional facility? No

Is this award Tech-Prep? No

### 1st Year

#### 1st Semester

Prefix	Number	Course Name	Course Type	Weekly Lec Hrs	Weekly Lab Hrs	Ext Hrs	Cont Hrs	Cred Hrs
NAUT	1370	Introduction to tugs and towing	Tech Local Need	3	1	0	64	3
EDUC	1300	<u>Learning Framework</u>	ACGM	3	0	0	48	3
NAUT	1372	Seamanship I	Tech Local Need	3	2	0	80	3
NAUT	1371	Introduction to Ships and Shipping	Tech Local Need	3	1	0	64	3
NAUT	1374	Basic Safety and Survival	Tech Local Need	3	2	0	80	3
<b>1st Semester Totals</b>				15	6	0	336	15

#### 2nd Semester

Prefix	Number	Course Name	Course Type	Weekly Lec Hrs	Weekly Lab Hrs	Ext Hrs	Cont Hrs	Cred Hrs
NAUT	1375	Terrestrial Navigation	Tech Local Need	2	3	0	80	3



# Ordinary Seaman II

NAUT	2274	Basic Stability and Ship Construction	Tech Local Need	2	2	1	80	2
NAUT	1373	Marine Dry Cargo Operations	Tech Local Need	3	1	0	64	3
NAUT	2371	Tugs and Towing	Tech Local Need	2	3	0	80	3
<b>2nd Semester Totals</b>				9	9	1	304	11
<b>1st Summer Session</b>								
Prefix	Number	Course Name	Course Type	Weekly Lec Hrs	Weekly Lab Hrs	Ext Hrs	Cont Hrs	Cred Hrs
NAUT	1279	Maritime Practicum I	Tech Local Need	0	0	7	112	2
<b>1st Summer Session Totals</b>				0	0	7	112	2
<b>Program Totals</b>				24	15	8	752	28

# Ordinary Seaman III

## Award 45968 - Ordinary Seaman III - 490309

### Award Information

Award Action: Revise

Award Status: Approved

Award Type: C1 - Level 1 Certificate

Award Title: Ordinary Seaman III

Award CIP Code: 490309 - MARINE SCIENCE/MERCHANT MARINE OFFICER

Implementation Date: Sept. 1, 2021

Is this award taught at a correctional facility? No

Is this award Tech-Prep? No

### 1st Year

#### 1st Semester

Prefix	Number	Course Name	Course Type	Weekly Lec Hrs	Weekly Lab Hrs	Ext Hrs	Cont Hrs	Cred Hrs
NAUT	1370	Introduction to tugs and towing	Tech Local Need	3	1	0	64	3
EDUC	1300	<u>Learning Framework</u>	ACGM	3	0	0	48	3
NAUT	1372	Seamanship I	Tech Local Need	3	2	0	80	3
NAUT	1371	Introduction to Ships and Shipping	Tech Local Need	3	1	0	64	3
NAUT	1374	Basic Safety and Survival	Tech Local Need	3	2	0	80	3
<b>1st Semester Totals</b>				15	6	0	336	15

#### 2nd Semester

Prefix	Number	Course Name	Course Type	Weekly Lec Hrs	Weekly Lab Hrs	Ext Hrs	Cont Hrs	Cred Hrs
--------	--------	-------------	-------------	----------------	----------------	---------	----------	----------

# Ordinary Seaman III

NAUT	1279	Maritime Practicum I	Tech Local Need	0	0	15	240	2
<b>2nd Semester Totals</b>				0	0	15	240	2
<b>3rd Semester</b>								
Prefix	Number	Course Name	Course Type	Weekly Lec Hrs	Weekly Lab Hrs	Ext Hrs	Cont Hrs	Cred Hrs
NAUT	1375	Terrestrial Navigation	Tech Local Need	2	3	0	80	3
NAUT	2274	Basic Stability and Ship Construction	Tech Local Need	2	1	0	48	2
NAUT	1373	Marine Dry Cargo Operations	Tech Local Need	3	1	0	64	3
NAUT	2371	Tugs and Towing	Tech Local Need	2	3	0	80	3
<b>3rd Semester Totals</b>				9	8	0	272	11
<b>4th Semester</b>								
Prefix	Number	Course Name	Course Type	Weekly Lec Hrs	Weekly Lab Hrs	Ext Hrs	Cont Hrs	Cred Hrs
NAUT	2375	Deck Sea Training 1: Basic Comm., Navigation, and Seamanship	Tech Local Need	2	3	0	80	3
NAUT	2376	Integrated Navigation I: Radar/ARA/ECDIS	Tech Local Need	2	3	0	80	3
NAUT	1376	Ship Stability and Trim	Tech Local Need	3	1	0	64	3
NAUT	2377	Nav Rules-International and Inland	Tech Local Need	3	0	0	48	3
<b>4th Semester Totals</b>				10	7	0	272	12

# Ordinary Seaman III

## 1st Summer Session

Prefix	Number	Course Name	Course Type	Weekly Lec Hrs	Weekly Lab Hrs	Ext Hrs	Cont Hrs	Cred Hrs
NAUT	2279	Maritime Practicum II	Tech Local Need	0	0	15	240	2
<b>1st Summer Session Totals</b>				0	0	15	240	2
<b>Program Totals</b>				34	21	30	1360	42

# SETWAC Seafarers' Welfare Committee

Fr. Sinclair Oubre, J.C.L., AFNI

1500 Jefferson Drive

Port Arthur, Texas 77642

Phone: 409-749-0171

Email: [Sinclair.Oubre@stellamarismail.org](mailto:Sinclair.Oubre@stellamarismail.org)

Facebook: [www.facebook.com/Stella-Maris-Diocese-of-Beaumont-107480633974106](https://www.facebook.com/Stella-Maris-Diocese-of-Beaumont-107480633974106)



# Questions?

## Thank You



# Commercial Fisheries

---

Nikki Fitzgerald

TEXAS A&M  
AGRI LIFE

Sea Grant  
Texas  
AT TEXAS A&M UNIVERSITY



# CPR / First AID Trainings

- **45 commercial fishermen received CPR / First AID Training January 8<sup>th</sup> - 12<sup>th</sup>**

- **February 8 - 11 - Providing Free man overboard training**

- **February 10 - Port Arthur Shrimpers Association Meeting at Seafarer Center**





# Hurricane Safety for Commercial Fishermen

---

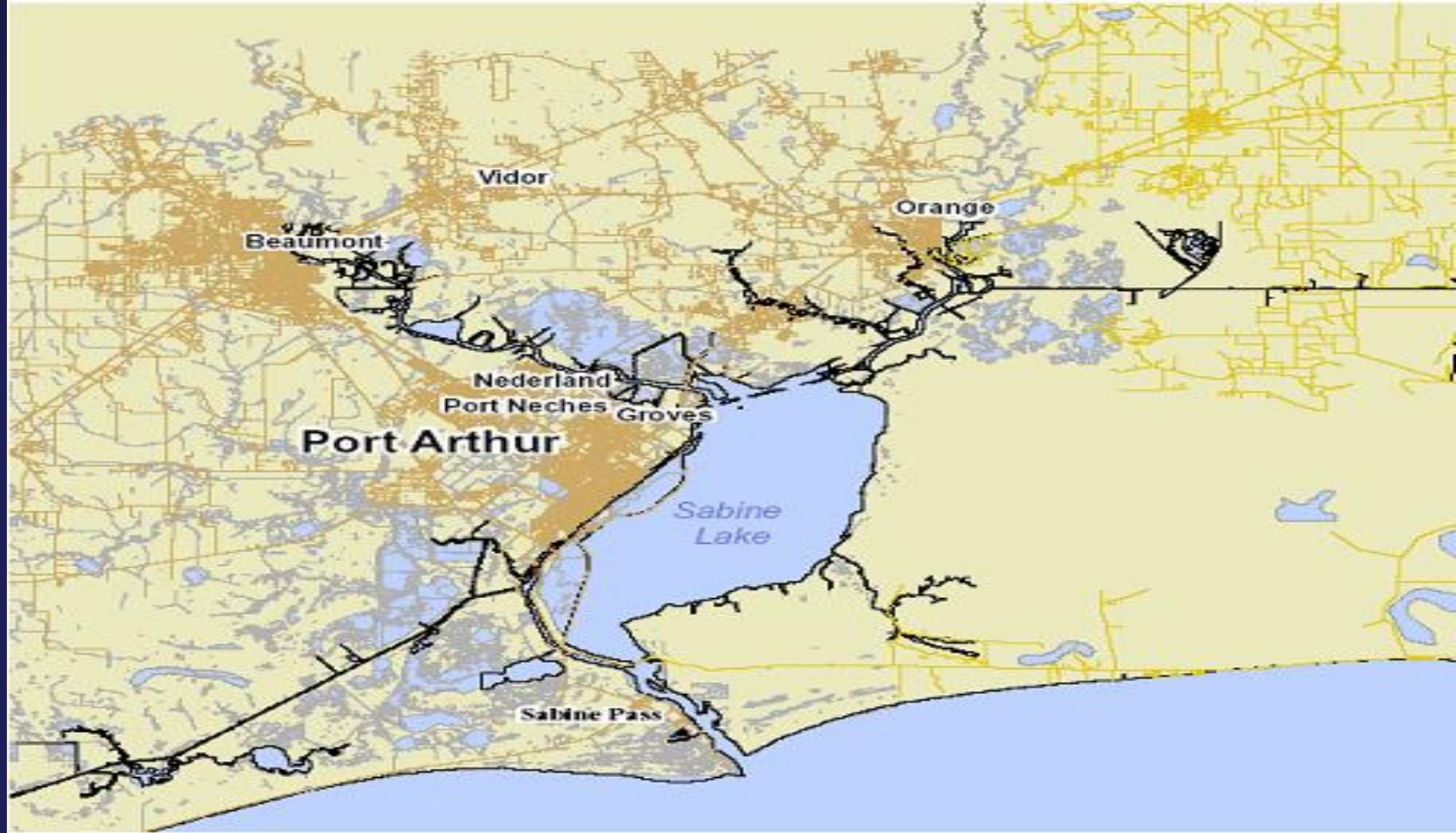
# Young Fishermen's Development Act

- Specific for Commercial Fishermen
- Eligible participants for training must be new to fishing or with less than 10 year of working in industry as deckhand/crew or captain (cumulatively)
- There will be \$2 million/year made available each year from 2022-2026- *so no 2021 funds- we will see the RFP in 2021 and apply for funds to start in 2022....*
- Funds will be managed through National Sea Grant Office and awarded in form of grants to existing or new fishermen training programs managed by- Sea grant programs, nongovernmental organizations, fishing association or cooperatives, and/or institutions of higher education.
- Max awards are \$200k/year for up to three years

## **The Gulf Young Fishermen Program**

Is program in development Gulf-wide for training commercial fishermen to enter federal fisheries in the Gulf of Mexico (shrimp, reef fish, HMS, spiny lobster, stone crab). Spearheaded by the Gulf of Mexico Reef Fish Shareholders Alliance and other likeminded industry members





## **Waterway Maintenance and Improvement Subcommittee Report**

**Larry Fountain, Sabine-Neches Navigation District**



# Update on Deepening

# Sabine-Neches Waterway

## Operations and Maintenance Update

**Timothy J. White, PE, PMP**  
**Resident Engineer**

**Belynda Kinman**  
**Operations Manager**

**USACE – Galveston District**

*SETWAC Meeting*  
*January 28, 2021*



®

US Army Corps of Engineers  
**BUILDING STRONG**®





# **Ongoing Contracts**

## **Sabine-Neches Waterway**



---

**BUILDING STRONG®**





# SABINE-NECHES WATERWAY MAINTENANCE DREDGING



<b>Project:</b>	<b>Sabine-Neches Waterway Maintenance Dredging</b>
Dredging Depth:	40 ft. Authorized Depth
Dredging Quantity:	Est. 3 MCYs
Material Type:	MAINTENANCE
Placement Areas:	PAs 8 and 5
Type of Equipment:	Pipeline Dredge
Award Date:	09 August 2019
Est Completion Date	30 January 2021

Contractor: RLB  
Dredge: Jonathon King Boyd



 **Completed Areas**



**BUILDING STRONG®**



# SABINE-NECHES WATERWAY SABINE PASS AND OUTER BAR & BANK CHANNEL



Project:	Sabine-Neches Waterway Outer Bar & Bank
Dredging Depth:	40ft/42 ft. Authorized Depth
Dredging Quantity:	Est. 4 MCYs
Material Type:	MAINTENANCE
Placement Areas:	ODMDS 1 - 4
Type of Equipment:	Hopper
Award:	August 2020
Estimated Completion	February 2021

Contractor: Great Lakes Dredge & Dock  
Dredge: Dodge & Padre Island



**BUILDING STRONG®**



# SABINE-NECHES WATERWAY

## PA 11 Training Dike Rehabilitation



Project:	PA 11 Training Dike Rehabilitation
Type of Work:	Earth Work
Placement Area:	PA 11 Training Dike
Type of Equipment:	Excavators; Dozers; Marsh Buggy
Award	October 30, 2020
Est Completion	May 2021

Contractor: SES Civil & Environmental



**BUILDING STRONG®**

**FY 2021**

# **Future Dredging Contracts**

## **Sabine-Neches Waterway**



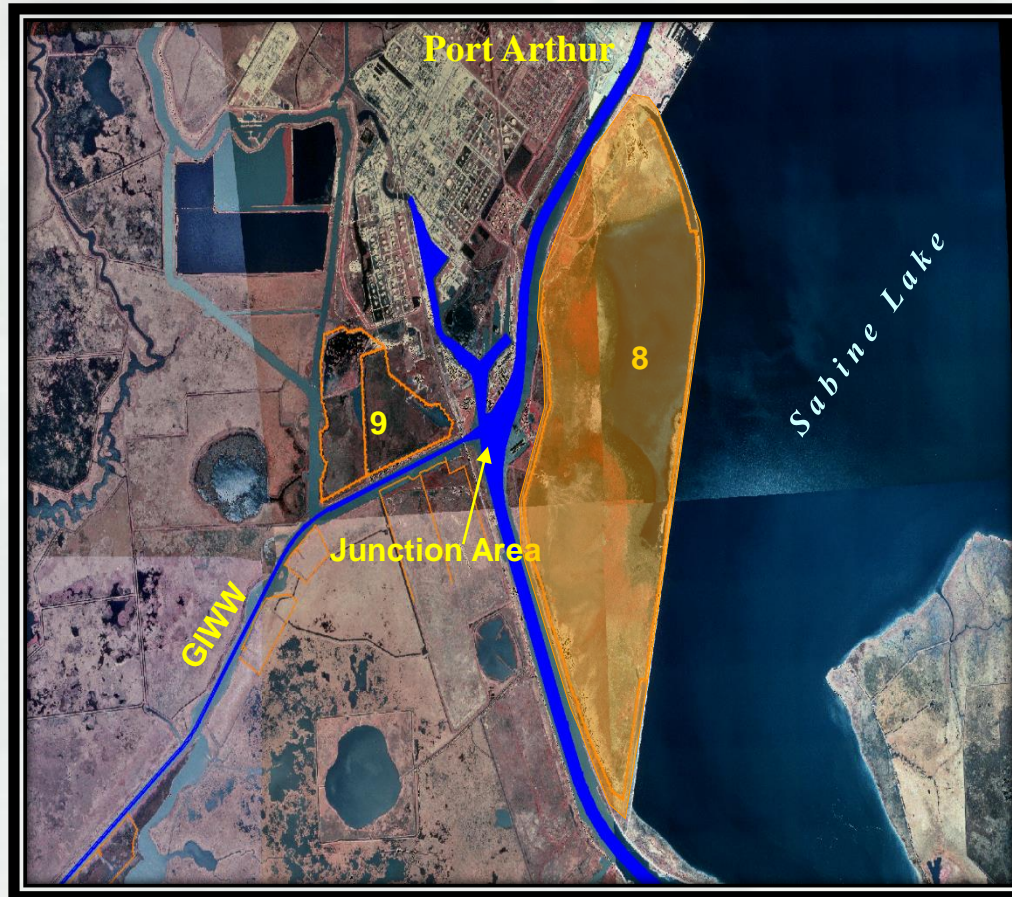
---

**BUILDING STRONG®**





# SABINE-NECHES WATERWAY PLACEMENT AREA NO. 8 IMPROVEMENTS



Project:	Sabine-Neches Waterway Placement Area No. 8 Improvements
Type of Work:	Levee Improvements
Placement Area:	PA 8
Type of Equipment:	Excavators; Dozers; Marsh Buggy
Advertise Date:	January 20, 2021
Bid Opening Date:	February 19, 2021
Est Award	March 2021



**BUILDING STRONG®**



# SABINE-NECHES WATERWAY

## Areas along the NECHES RIVER



<b>Project:</b>	<b>Sabine-Neches Waterway Placement Area No. 8 Improvements</b>
Dredging Depth:	40ft. Authorized Depth
Dredging Quantity:	Est. 4 MCYs
Material Type:	<b>MAINTENANCE</b>
Dredge Type	Pipeline Dredge
Advertisement	May 2021
Bid Opening	June 2021
Award:	July 2021



**BUILDING STRONG®**



# SABINE-NECHES WATERWAY ENTRANCE CHANNEL TO SABINE PASS DEEPENING



<b>Project:</b>	<b>Sabine-Neches Waterway Outer Bar &amp; Bank to Sabine Pass</b>
Dredging Depth:	48 ft. Authorized Depth
Dredging Quantity:	Est. 31 MCYs
Material Type:	<b>NEW WORK</b>
Placement Areas:	ODMDS 1 – 4 and A-D
Type of Equipment:	Hopper
Award:	August/September 2021

**\*\*Also includes Extension Channel**



**BUILDING STRONG®**





# SABINE-NECHES WATERWAY SABINE PASS TO TAYLORS BAYOU DEEPENING



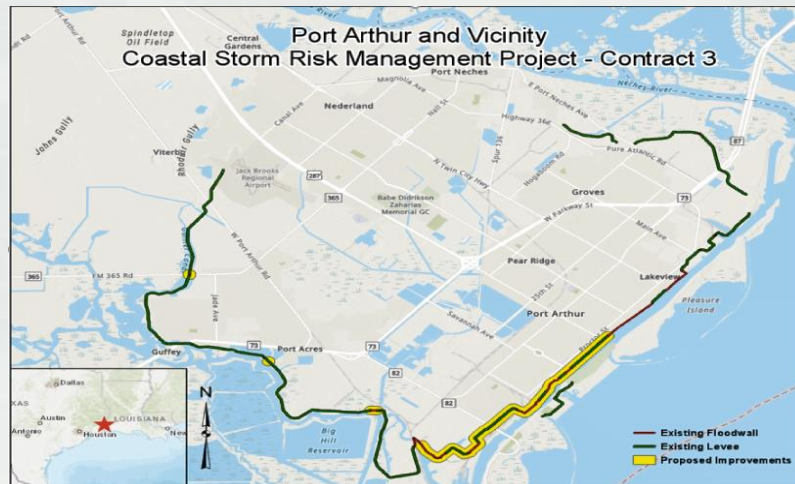
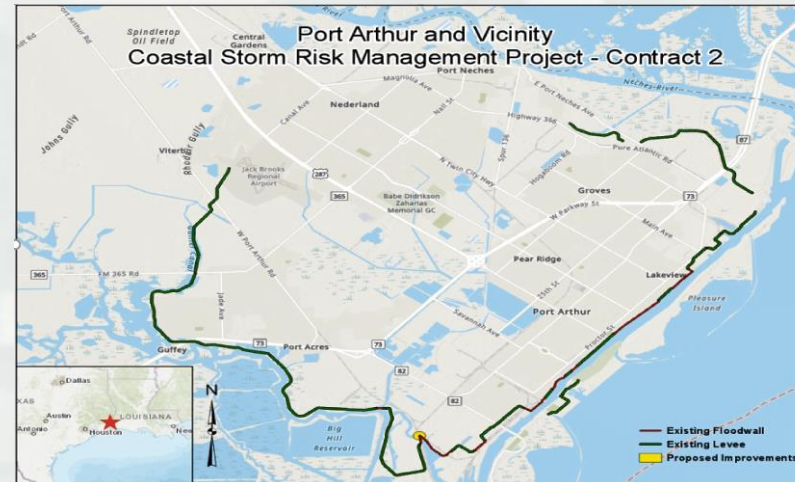
<b>Project:</b>	<b>Sabine-Neches Waterway Outer Bar &amp; Bank to Sabine Pass **</b>
Dredging Depth:	48 ft. Authorized Depth
Dredging Quantity:	Est. 16 MCYs
Material Type:	<b>NEW WORK</b>
Placement Areas:	PA 5,8 & 9 / ODMDS 4
Type of Equipment:	Pipeline/Hopper
Award:	2021

Contract to be awarded by the  
Sabine-Neches Navigation District.  
Dependent on Federal Contract.



**BUILDING STRONG®**

# Sabine to Galveston Contracts



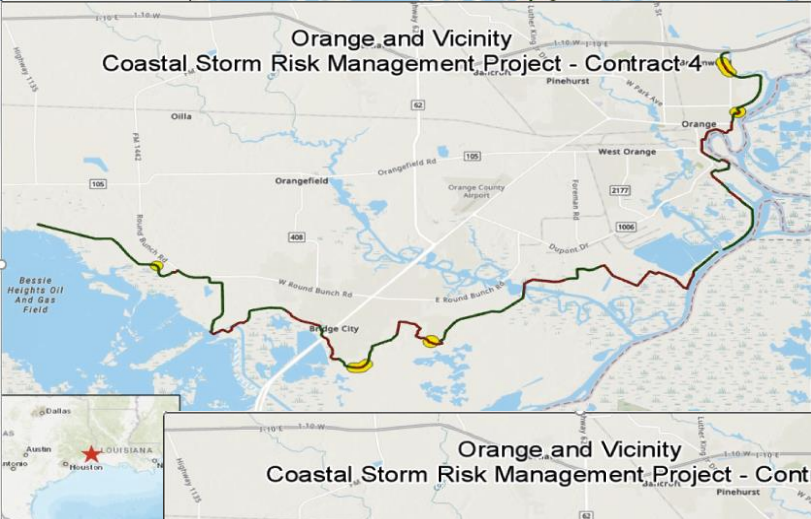
S2G - Port Arthur Construction	2020				2021				2022				2023				2024				2025				2026			
	Q1	Q2	Q3	Q4	Q1	Q2	Q3	Q4	Q1	Q2	Q3	Q4	Q1	Q2	Q3	Q4	Q1	Q2	Q3	Q4	Q1	Q2	Q3	Q4	Q1	Q2	Q3	Q4
Levee Raise																												
Levee Raise & Floodwall Replacement																												
Levee Raise & Floodwall Replacement																												
Levee Raise, Ext & Floodwall Replacement																												



**BUILDING STRONG®**



# Sabine to Galveston Contracts



S2G - Orange Construction	2021				2022				2023				2024				2025				2026			
	Q1	Q2	Q3	Q4	Q1	Q2	Q3	Q4	Q1	Q2	Q3	Q4	Q1	Q2	Q3	Q4	Q1	Q2	Q3	Q4	Q1	Q2	Q3	Q4
Cow Bayou																								
Flood Wall																								
Adams Bayou																								
Pump Stations & Flood Walls																								
Levee Raise																								



NG STRONG®

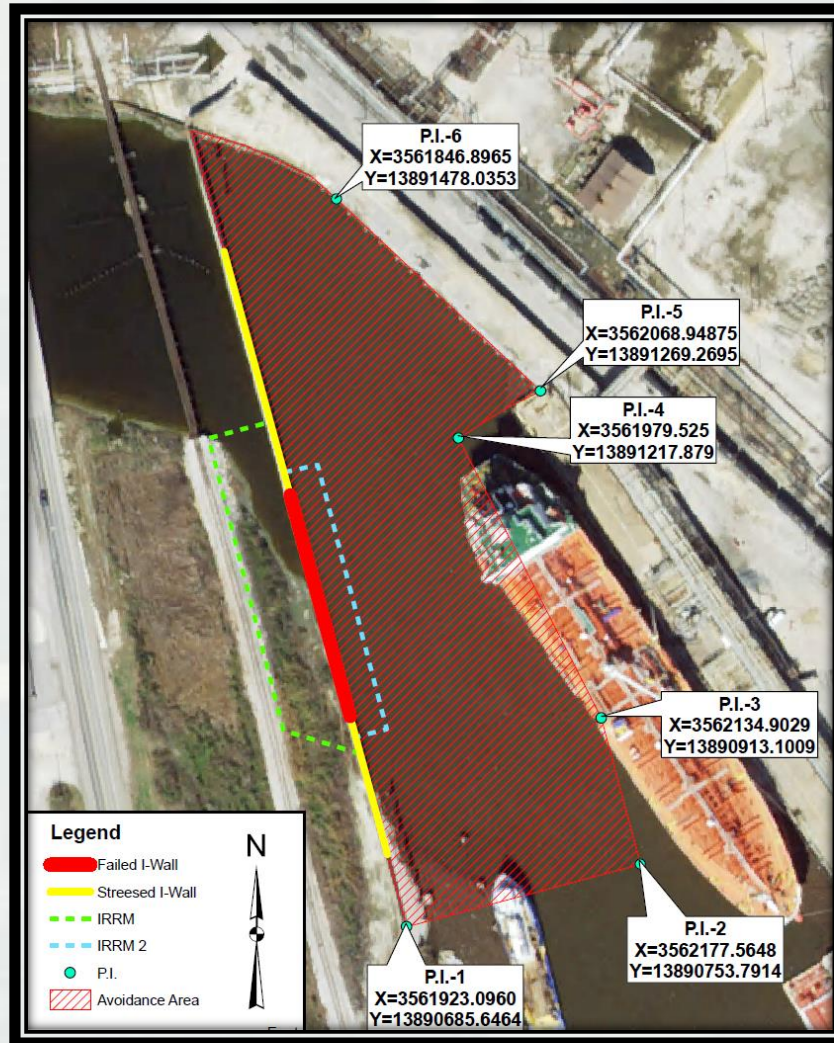
# Taylor's Bayou Update



**BUILDING STRONG®**



# Taylors Bayou Current Restriction



## Current Status:

- Vessel Traffic Allowed in Hatched Area shown in Figure with limitation put on tugs.
- Wall and temporary protection is being monitored by DD7 and USACE.



# Questions?



**Belynda Kinman**  
**CESWG-ODN**  
**409-766-6323**

[Belynda.M.Kinman@usace.army.mil](mailto:Belynda.M.Kinman@usace.army.mil)

**Timothy J. White, P.E., PMP**  
**CESWG-ECC-NP**  
**409-985-2000 ext.1412**

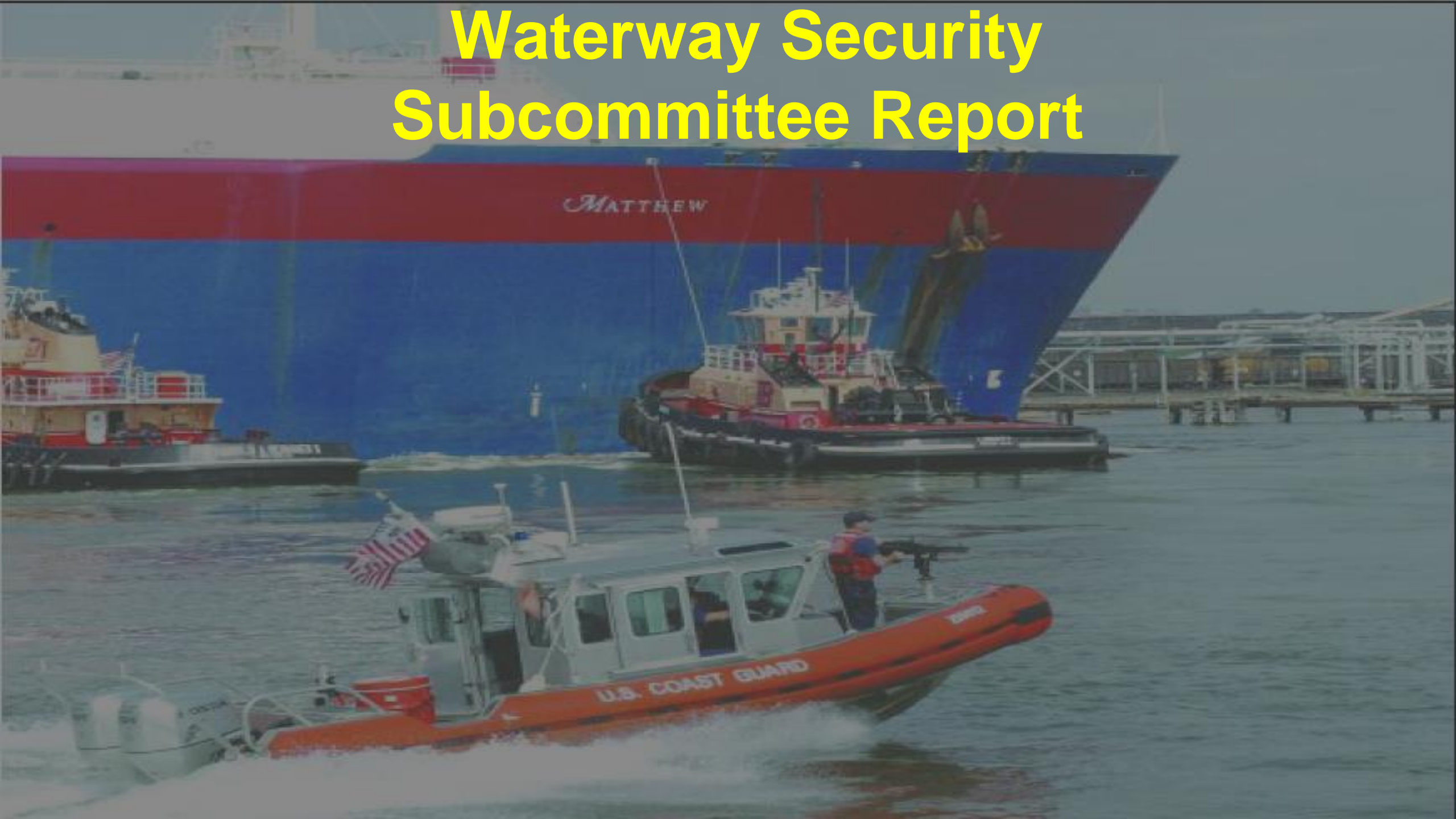
[timothy.j.white@usace.army.mil](mailto:timothy.j.white@usace.army.mil)



**BUILDING STRONG®**



# Waterway Security Subcommittee Report







# AMSC and Port Security Specialist Report

[Jeremy.D.Hansen@uscg.mil](mailto:Jeremy.D.Hansen@uscg.mil)

# AMSC Exercises



- **The SETX AMSC will be participating in a Complex Coordinated Terrorist Attack (CCTA) full scale exercise on 06 May 2021.**
  - **SETX Regional Planning Commission is exercise lead.**
- **Local Port Readiness Committee (PRC) scheduled to conduct a military outload (MOL) exercise on 07 Sep 2021.**

# Events



- **Annual joining meeting of Anti-Terrorism Advisory Council (ATAC) and AMSC will be held virtually via HSIN Connect in March or April.**
- **Strategic planning for the 2021 Port Security Grant Program. Applicants are encouraged to socialize projects with the COTP prior to application. \$100M in nationally competitive funding is expected.**
- **AMSC subcommittees and working groups have resumed a normal schedule for 2021 by using HSIN Adobe Connect. Port partners/stakeholders with security or emergency management responsibilities are encouraged to register with HSIN.**



# USCGC ANT Sabine

## ATON REPORT





# Current ATON Discrepancies



AID
Sabine Pass Alpha RRL- Destroyed
Sabine Pass Lighted Buoy 32- Off station
Sabine Pass Light 38- Destroyed TRLB
Sabine Pass Light 39- Destroyed TRLB
Port Arthur Canal Light 40- Destroyed TRLB
Port Arthur Canal Light 49- Destroyed TRLB
Sabine-Neches Canal Light 51- Destroyed TRLB
Sabine-Neches Canal Light 60- Destroyed TRLB

# Current ATON Discrepancies

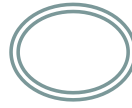


AID
Sabine-Neches Canal Light 64- Destroyed TRLB
Sabine-Neches Canal Light 66- Damaged
Neches River Light 40A- Destroyed TRLB
Neches River Uniform RRL- Destroyed
Neches River Light 66- Destroyed TRLB
Neches River Light 68- Destroyed TRLB

CGC HATCHET - Late February to Mid-March

- Includes relocation of aids near new turning basin at Sunoco / MARAD.

# QUESTIONS/COMMENTS ?







# New Business



# Response VS Salvage

Mr. Scott Whalen, USCG

# Waterway Activities



- KCS Railroad Bridge – Fender Repairs – Thru mid-March
- Safety Zone remains in effect for north end of Taylors Bayou
- Anchorage Basin 1 (FINA Lower) – NPRM soon

**Mr. Scott Whalen, USCG**

# STATE OF THE WATERWAY - 2020



# Mark Your Calendars Upcoming SETWAC Meetings



## ***Working Group Meeting***

Thursday, April 14, 2021

10:00 am

Sabine-Neches Navigation District Office

## ***Full Committee Meeting***

Thursday, April 28, 2021

10:00 am

MSU Port Arthur

