



# U. S. Coast Guard Severe Weather Planning

## Post-Storm MTS Restoration

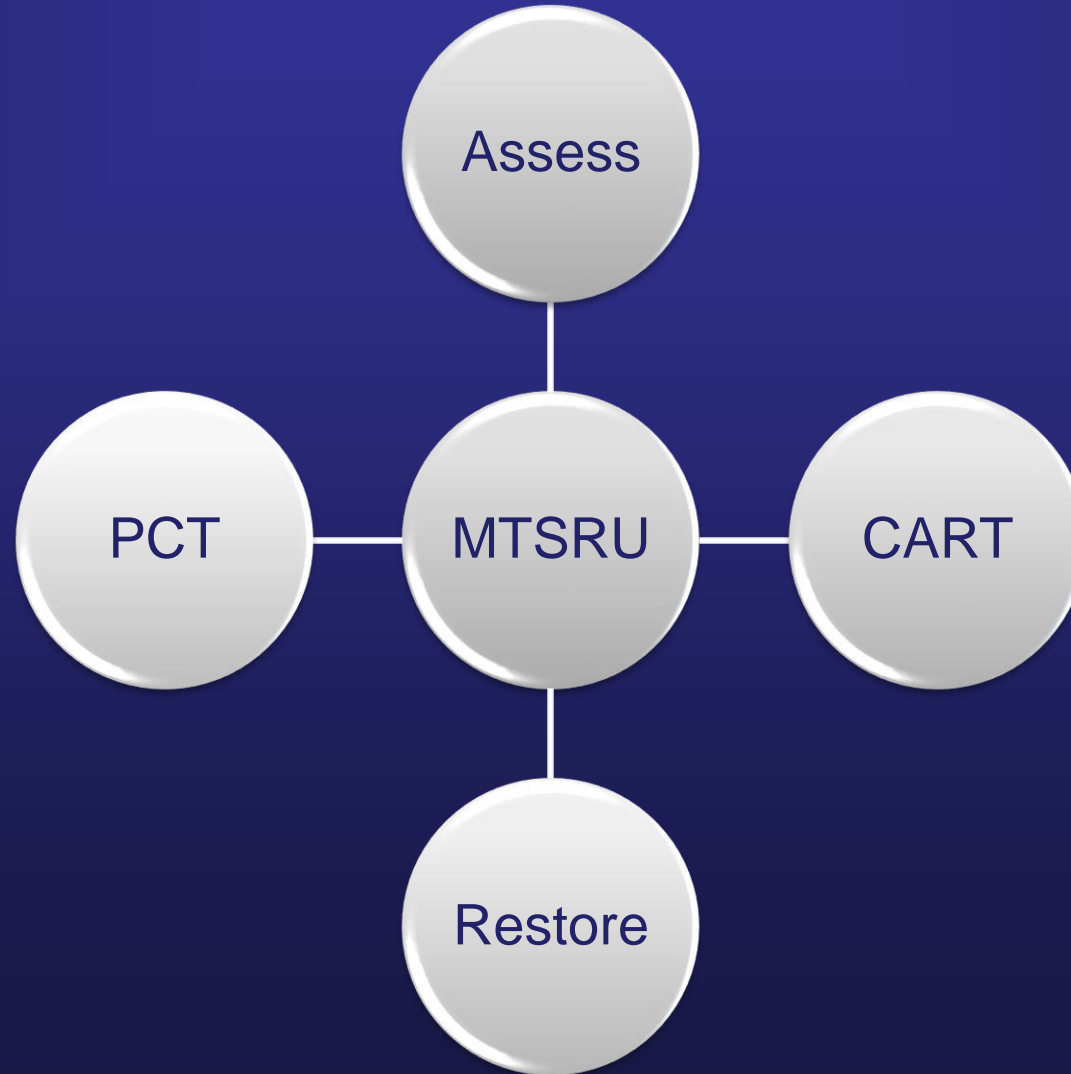
Scott Whalen  
VTS Director / WWM / MTSL

# USCG Organization

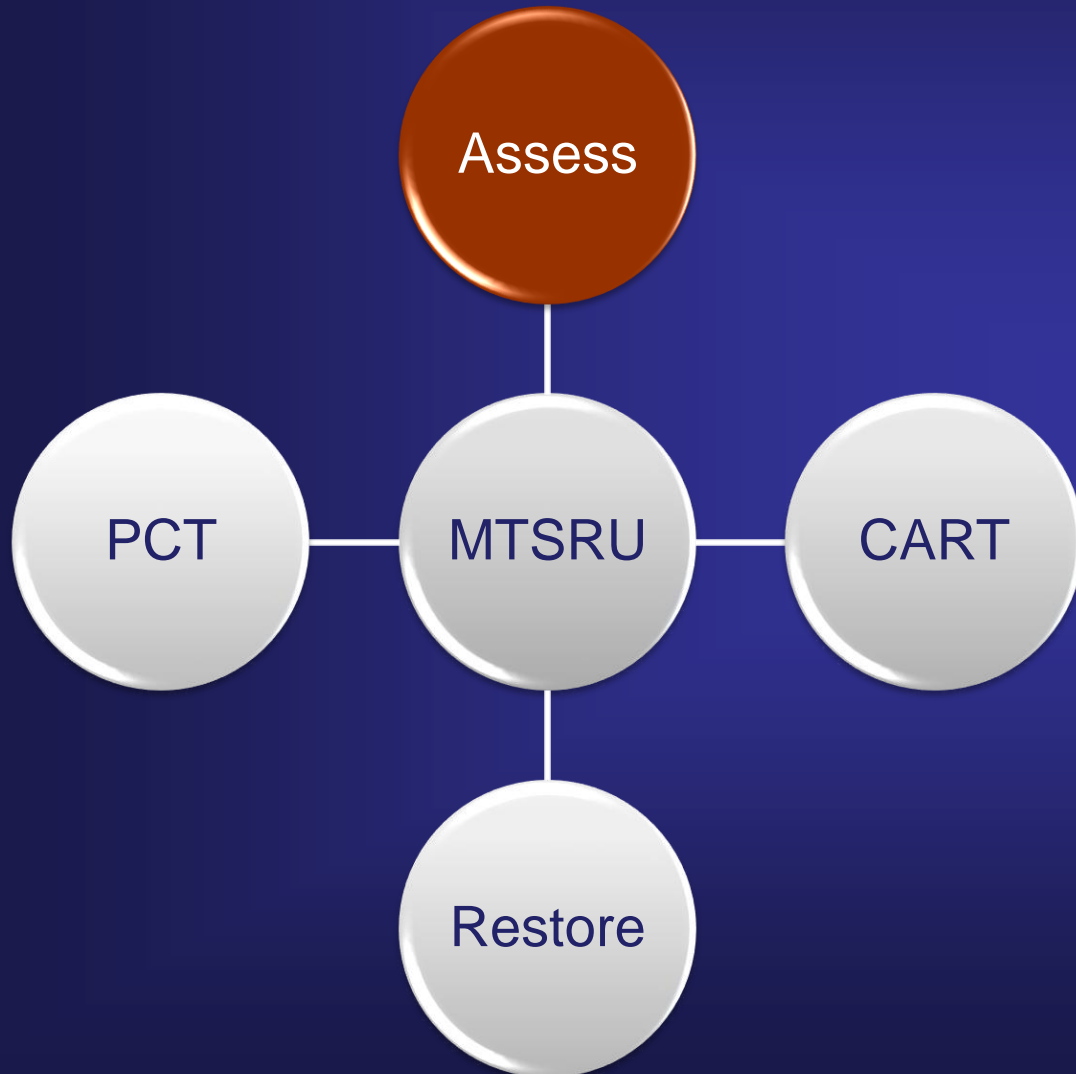
- Incident Commander (or Unified Command)
  - COTP            Ports and Waterways Safety
  - FOSC            Pollution
  - SMC            SAR - to a limited degree
  
- Incident Command Post
  - Internal and External Partnerships



# Port Condition RECOVERY



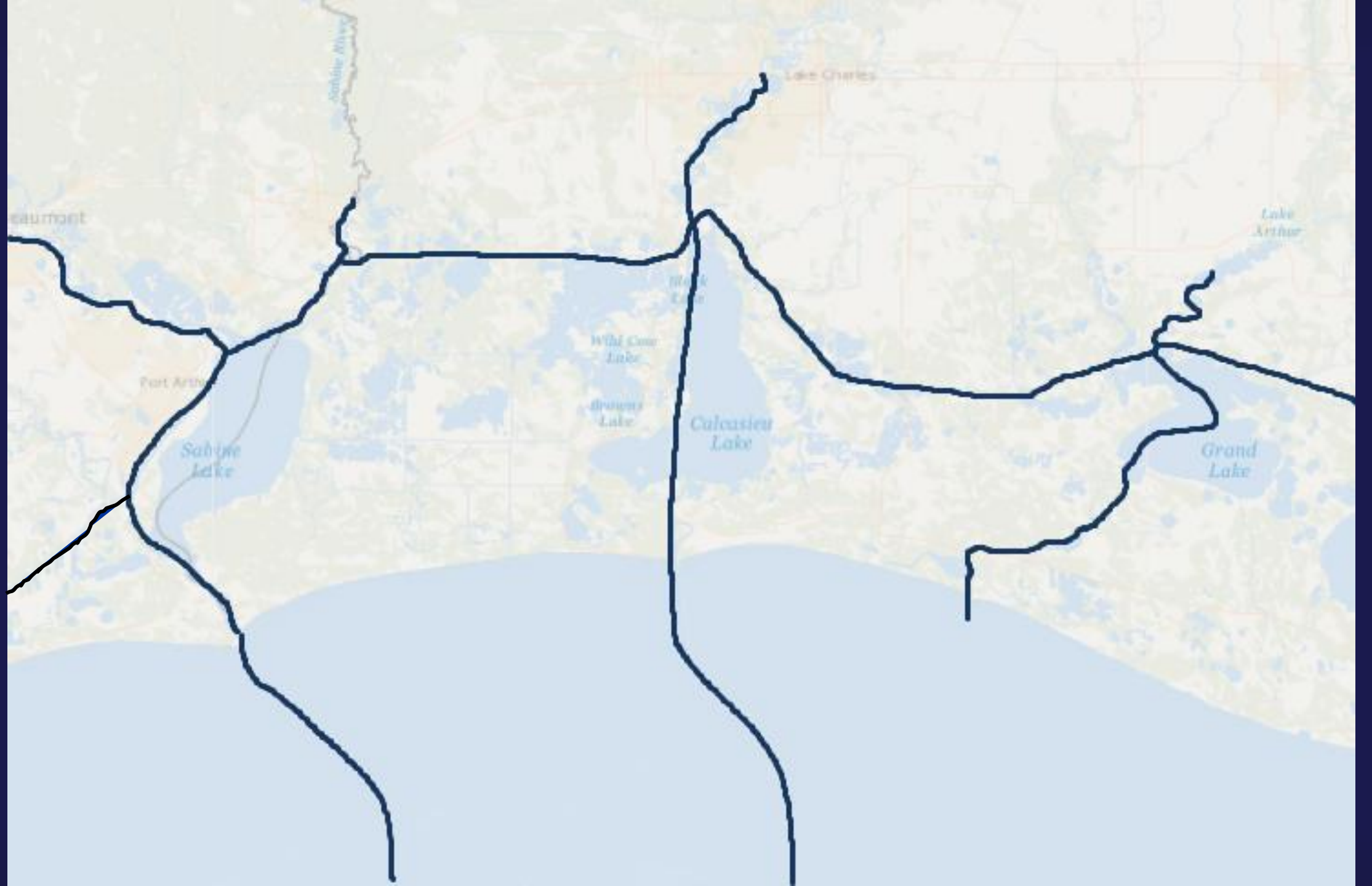
# Port Condition RECOVERY



## Port Status

- Closed \*
- Closed with Restrictions
- Open

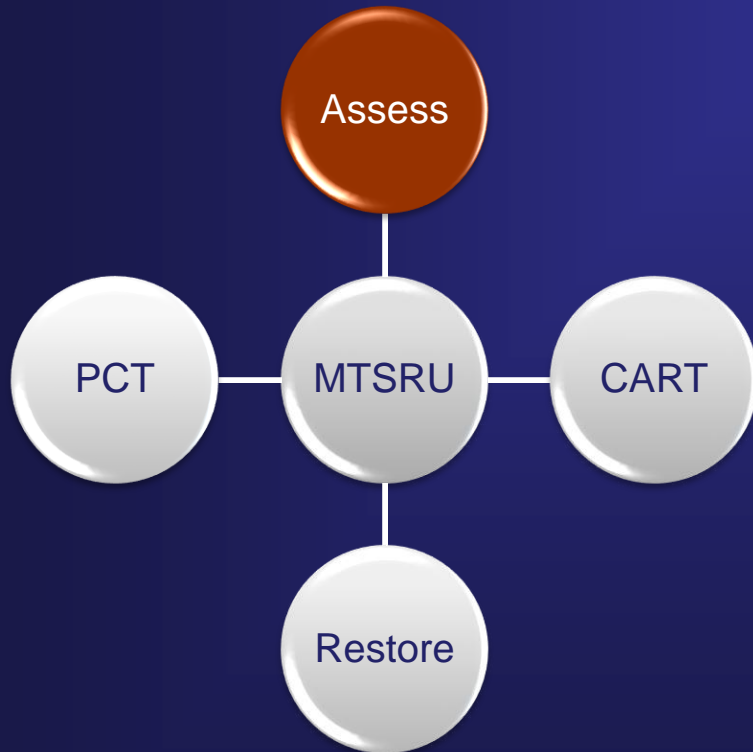
\* Vessel Movements with  
COTP Permission.







# MTS Assessment



- Wreckage (e.g. spills, wrecks, potentials)
- Shoaling
- Aids to Navigation
- Environmental (e.g. spills, wrecks, potentials)
- Flotsam
- Bridges
- Waterfront Facilities

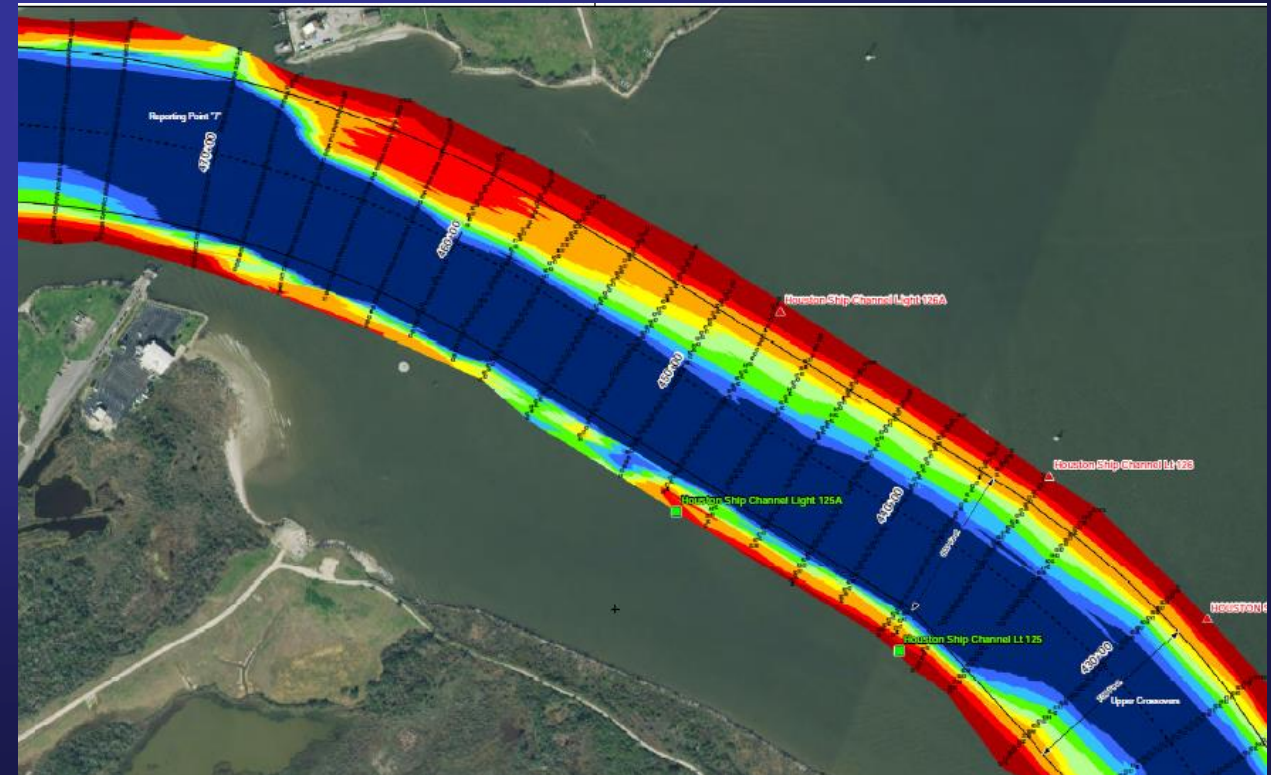
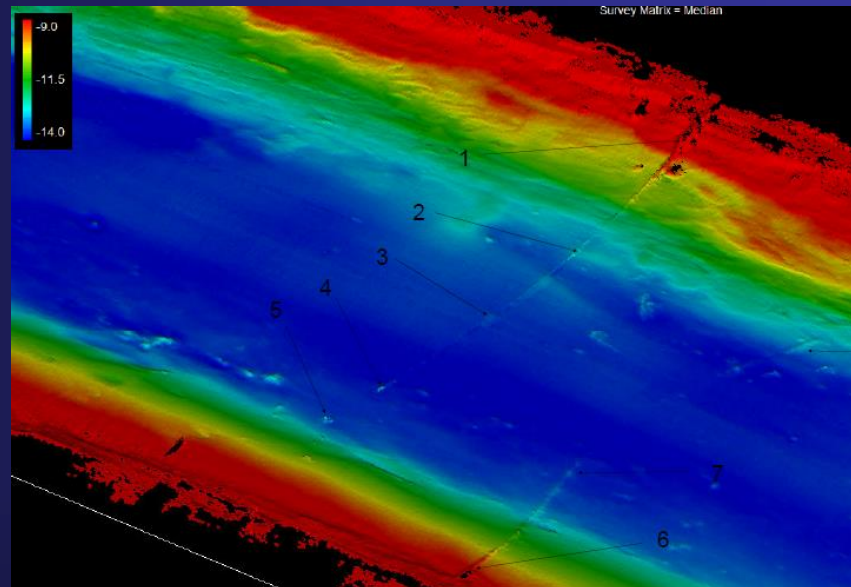
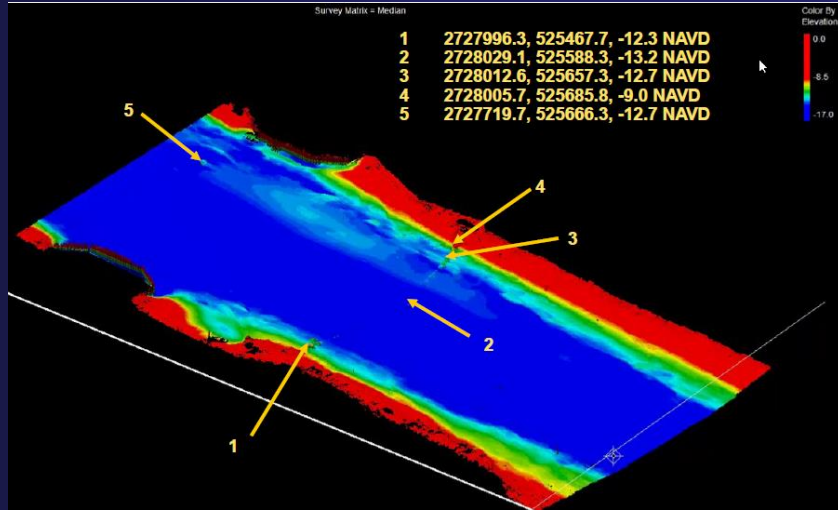


# MTS Assessment

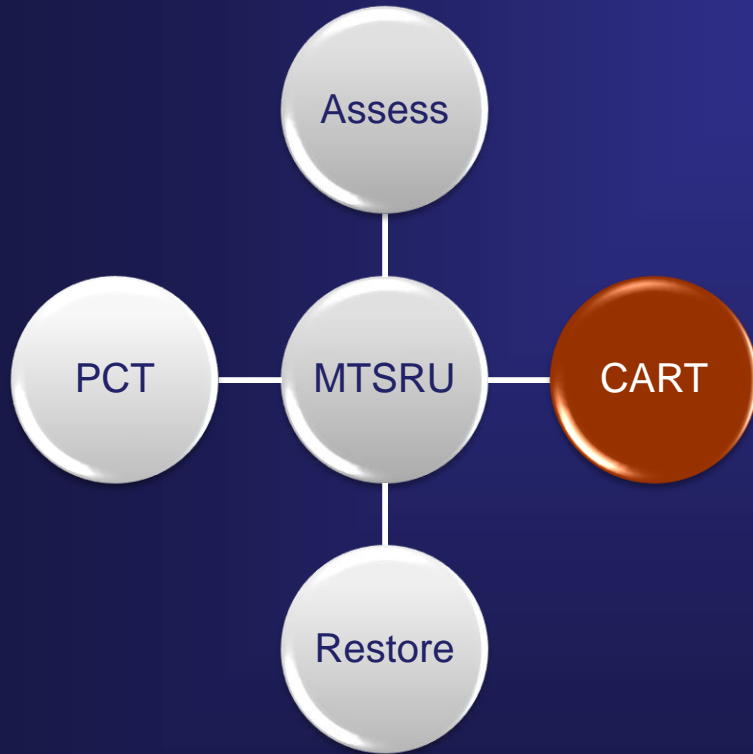




# MTS Assessment



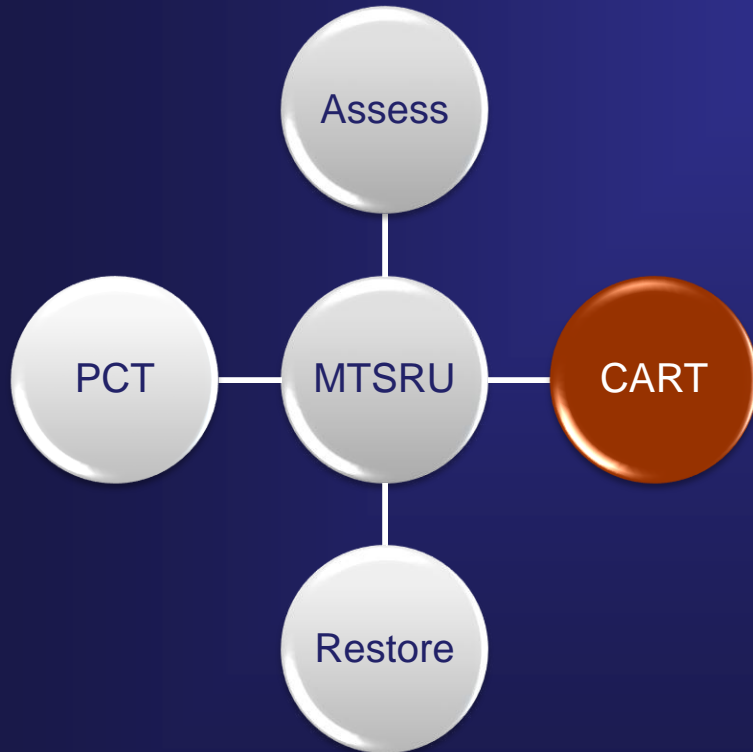
# MTS Reporting



## Essential Elements of Information

EEI Type	Total Baseline		EEI Type	Total Baseline
Aids to Navigation	93		Locks	2
Anchorage	5		Monitoring Systems	1
Barge Fleeting Areas	5		Non-container Facilities	11
Barge Traffic	300		Non-Deep Draft Channel	4
Break-Bulk Facility	3		Offshore Platforms	2
Bridges	11		Oil Refinery	4
Bulk Liquid Facilities	25		Petroleum Facility	1
Chemical Facility	4		Ports	3
Commercial Fishing	30		Shipyards	11
Deep Draft Channel	6		USCG Unit	4
LNG/LPG Facility	3			

# MTS Reporting

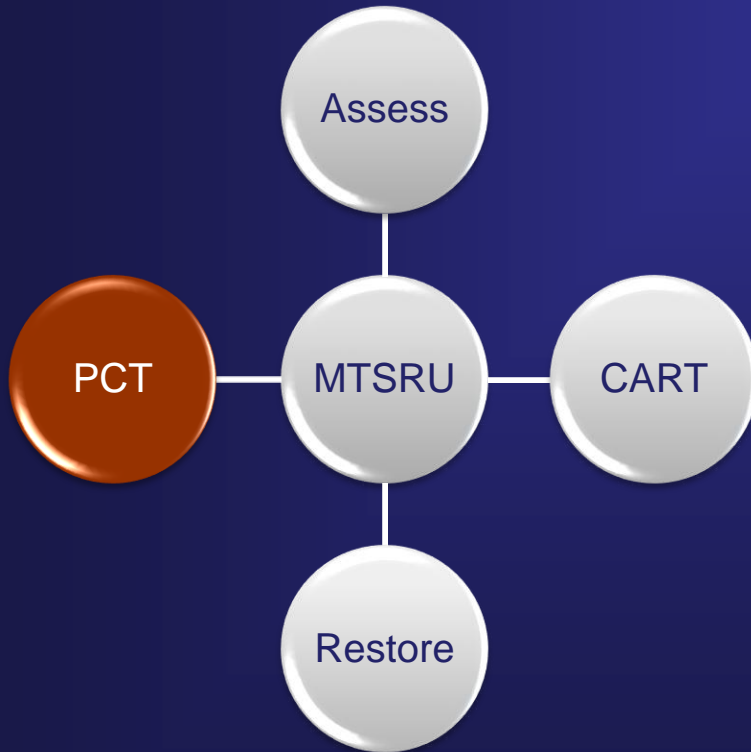


## Focus Areas

### Select One

- Port/Incident Area Summary
- MTS Impact
- Intermodal and Supply Chain Impact
- MTS Recovery Actions
- Vessels in Queue
- Waterways Management Actions
- Future Plans

# Communication





# Port Coordination Team

USCG  
CBP  
FEMA  
MARAD

NOAA  
NWS

USACE  
MSC  
SDDC

TGLO  
TXDOT  
TX DPS  
TRRC



S-N Chiefs Assoc.  
S-N Nav District  
Jefferson Cty Judge  
Jefferson Cty Sheriff  
LNVA  
City Governments

Sabine Pilots  
Harbor Tugs  
GICA  
Facility Reps  
Allied Services

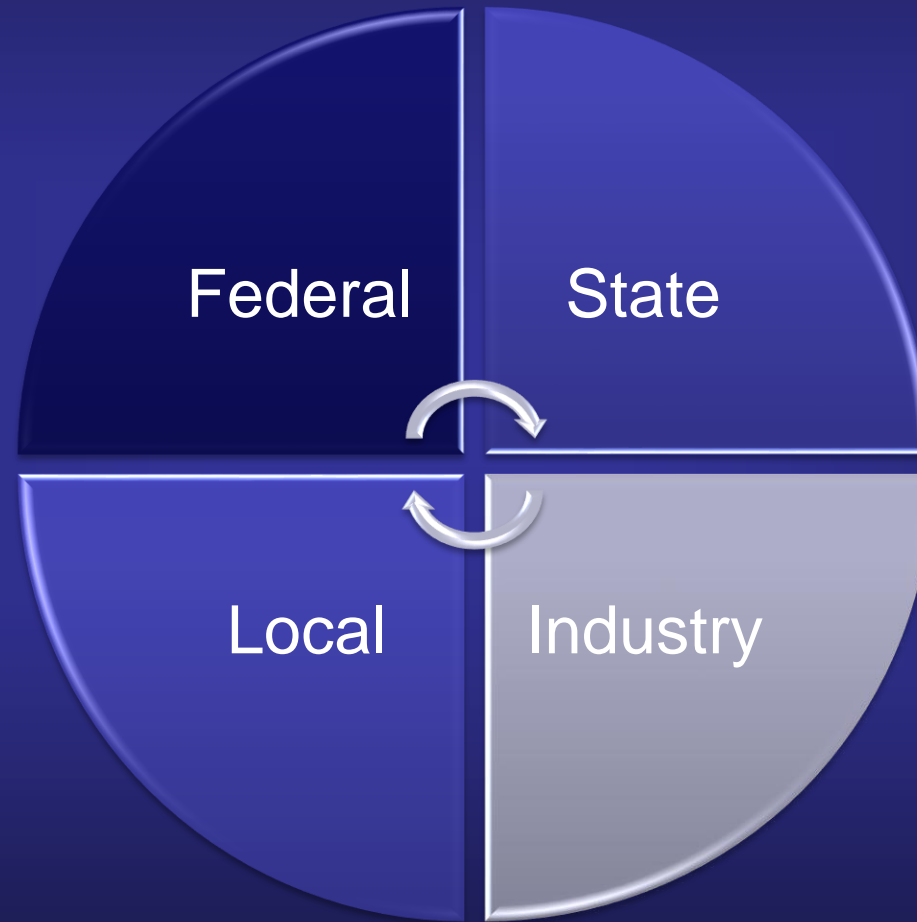
# Port Coordination Team

USCG  
CBP  
FEMA  
MARAD

NOAA  
NWS

USACE  
MSC  
SDDC

TGLO  
TXDOT  
TX DPS  
TRRC



S-N Chiefs Assoc.  
S-N Nav District  
Jefferson Cty Judge  
Jefferson Cty Sheriff  
LNVA  
City Governments

Sabine Pilots  
Harbor Tugs  
GICA  
Facility Reps  
Allied Services

# Marine Information

MSIB

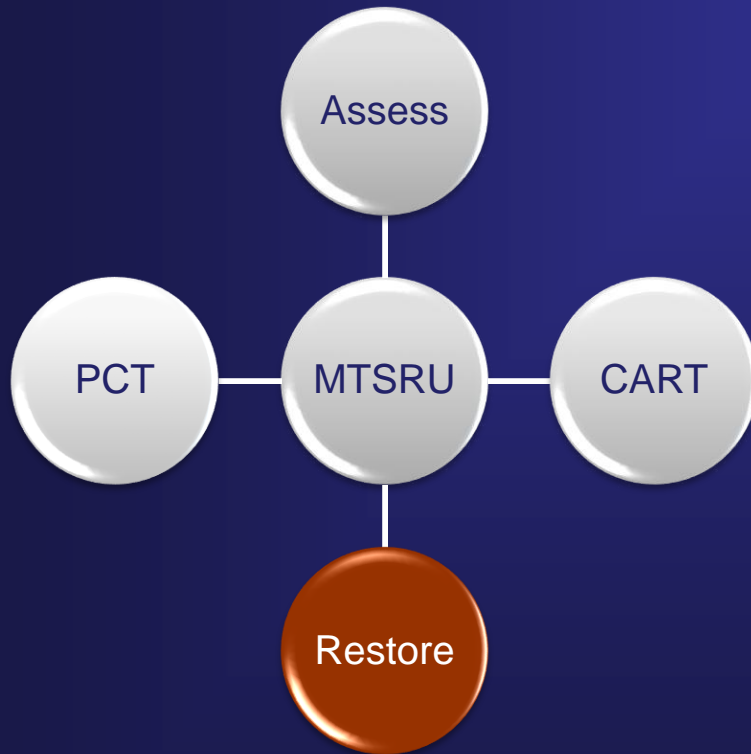


BNTM

VTS Advisory



# MTS Restoration



- Hazard Removal
- Shoaling
- Aids to Navigation
- Environmental
  - Spills, Wrecks, Potentials
- Flotsam
- Locks and Bridges
- Waterfront Facilities





U.S. Department of Homeland Security  
**U.S. COAST GUARD**

*Marine Safety Unit*

*Port Arthur, Texas*

## Marine Safety Information Bulletin

18-20

August 31, 2020

**Hurricane Laura**

### Calcasieu Waterway

1. No vessel movements allowed at this time.

### Sabine Neches Waterway

The Sabine-Neches Waterway is open to limited traffic. The following restrictions are in effect:

1. Vessels greater than 500-gross tons (GT) are restricted until an assessment of deep draft channels are completed. Test runs of limited draft vessels will begin a.m. August 30, 2020.
2. A dry dock is sunk in the Sabine-Neches Canal 2-miles south of Beans Fleet. No vessels may operate within ½ mile of the sunk dry dock without permission of "Port Arthur Traffic" (VTS) or the Captain of the Port.
  - a. While the dry dock remains sunk in the channel, no vessels will be allowed to pass during night time hours.
  - b. Barge configurations allowed to pass will be limited based on the condition and location of the dry dock. Contact "Port Arthur Traffic" for details.

## Captain of the Port Details



MARINE SAFETY UNIT PORT ARTHUR (08-33241)  
2901 TURTLE CREEK DRIVE  
PORT ARTHUR TX  
Primary Phone: (409) 723-8500  
Emergency Phone: (409) 723-8500  
Fax Number: (409) 723-8534  
Rescue 21 VHF DSC MMSI Number:

Response Phone: 409-719-5011  
Incident Mgmt. Phone: 409-719-5034  
Enforcement Phone: 409-719-5013  
Prevention Phone: 409-723-8584  
Inspection Phone: 409-723-8572  
Investigations Phone: 409-723-8591  
Waterways Management Phone: 409-719-5080  
Prep/Planning Phone: 409-723-8525  
Facilities Branch Phone: 409-723-8590  
Commercial Fishing Vessel Phone: N/A  
Foreign Vessel Exams Phone: N/A  
Facility Inspection Branch Phone: 409-719-5033

877-24 WATCH



National Response Center Number: 800-424-8802 - Contact the NRC for oil spills, hazmat releases, and America's Waterway Watch.

### Port Status Information

Port	Port Status	Comments	Last Changed
ORANGE	■ Open with Restrictions	MSIB 02-13 - 23.5 Foot Draft Restriction	2020-11-16
BEAUMONT (TX)	■ Open		2020-10-22
CAMERON	■ Open		2020-11-16
CC BUOY LAKE CHARLES P.S.	■ Open		2020-11-16
LAKE CHARLES	■ Open		2020-11-16
PORT ARTHUR	■ Open		2020-10-22
SABINE	■ Open		2020-10-22
SABINE BAR	■ Open		2021-05-06

Showing 1 to 8 of 8 entries

Previous 1 Next

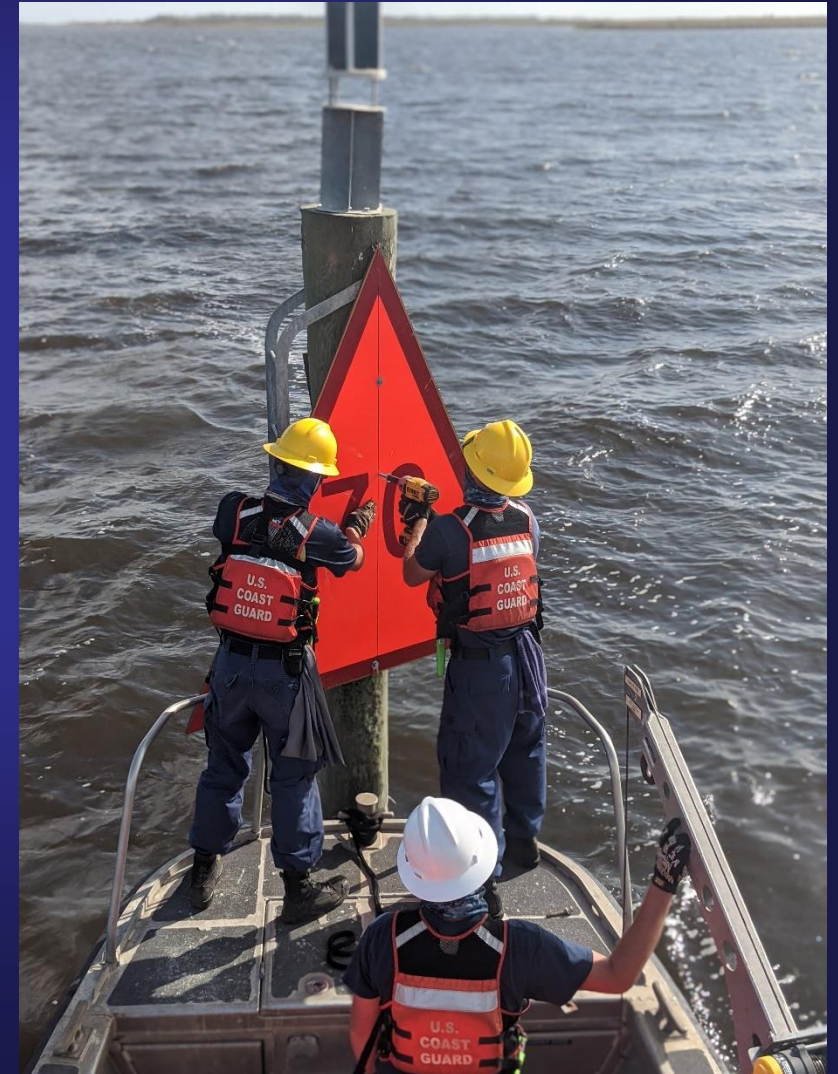
### COTP MARSEC Level



The Captain of the Port has set MARSEC Level 1 for the Port Arthur and Lake Charles COTP Zone.

Modified: 2020-02-13

# MTS Restoration

















scott.k.whalen@uscg.mil

vtspa-sup@uscg.mil