



**Full Committee Meeting**  
**22 April, 2021**

# SETWAC Managing Board

## Voting Membership



Shipping Agents			
(P) Tad Collier	Moran Shipping	23 Apr 2021	23 Apr 2024
(A) VACANT			

# Navigation Subcommittee Report

Captain Charlie Tweedel, Sabine Pilots





# Proposal Letter on rebuilding Alpha Range



# Comments on Anchorage Basin 1 Lower Fina



# **Education, Research and Workforce Development Subcommittee Report**

**Mr. Erik Stromberg, Lamar University**





CENTER FOR  
ADVANCES IN PORT MANAGEMENT  
**LAMAR UNIVERSITY**

**SETWAC FULL COUNCIL MEETING**

**EDUCATION, RESEARCH AND WORKFORCE DEVELOPMENT SUBCOMMITTEE**

**AGENDA—APRIL 22, 2021**

- Advanced Education and Prospective Undergraduate ‘Dash’ Degree
- Continuing Education and Workforce Education
  - 2021 Schedule
  - April 26: Women in Transportation—Ports and Terminal Management
  - May TBD: Hurricane Planning
  - Maritime Educational Pathway
- Research

# Advanced Education

- Masters of Science in Port and Terminal Management
- MBA with Concentration in Port and Terminal Management
- Masters of Engineering with Concentration in Port and Terminal Management



# The Department of University Studies: Dash Degree

*Offered as both a Bachelor of Science and a Bachelor of Arts.*

## Port and Supply Chain Management

1. Geography of Logistics
2. Supply Chain Management
3. Analysis of Logistic Systems
4. Port and Terminal Management

# Continuing Education—2021 Webinars

- SE Texas Flood Coordination Study: 2/11
- Strategic Asset Management—Cost-effectively Optimizing Performance of Critical Assets: 3/18 (Port of the Future Conference)

## UPCOMING

- Women in Transportation—Port and Terminal Management: 4/26, 1pm-3pm
- Hurricane Planning: May (Date TBD)
- Cyber Security—NAVIC Update: June (Date TBD)
- Diversity and Inclusion: July (Date TBD)
- SNNW Channel Improvement Project--Preparing for Increased Traffic and Economic Development: September (Date TBD)
- Facilitating Cargo Movement and Handling Through Digital Technologies: October (Date TBD)

# Women in Transportation—Port and Terminal Management



## WEBINAR: WOMEN IN TRANSPORTATION – PORT AND TERMINAL MANAGEMENT

Industry leaders address career opportunities and challenges in the important and exciting arena of public port and private terminal management. Women in transportation will discuss why you should consider getting involved in port and terminal industry.

**When:** Monday, April 26, 2021  
1 pm - 3 pm central

**Zoom:** <https://us02web.zoom.us/j/83226283188?pwd=b3VqL0NCcVJlZ0QlhSckJlaTRkQT09>  
passcode: 949168

### AGENDA

#### **"C-Suite" Perspectives**

*Key success factors, and the rewards, personal and professional, from a career in port management. Prerecorded. 20 minutes.*

1. Kristin Decas, CEO, Port of Hueneme
2. Phyllis Saathoff, Executive Director/CEO, Port Freeport
3. Lorrie Taylor, CEO, Port of Orange
4. Brandy Christian, CEO, Port of New Orleans (live)

#### **'Roundtable Discussion'**

*Industry leaders and rising stars discuss and respond. "Live Session." 45 minutes.*

1. Mary Beth Long, AAPA, VP of Marketing and Workforce Development – Moderator and Discussion Leader.
2. Sade Chick, Port of Beaumont, Director of Corporate Affairs
3. Lauren Brand, President, National Association of Waterfront Employers
4. Helen Brohl, Executive Director, U.S. Committee on Marine Transportation System (CMTS)
5. Lillian Borrone, Port Industry Leader

**Audience Participation: Comments and Q&A. 25 minutes.**



CENTER FOR  
ADVANCES IN PORT MANAGEMENT  
**LAMAR UNIVERSITY**

# Hurricane Planning—Draft Agenda

## May (Date TBD)

- **Program Introduction**
  - *SETWAC Representative*
- **2021 Hurricane Forecast and Update on Forecasting Protocols and Capabilities**
  - *Roger Erickson, Warning Coordination Meteorologist, Lake Charles, LA (invited)*
- **SNWW Channel Operations Pre- and During Storm Event**
  - *USCG MSU Port Arthur*
  - *Sabine Pilots*
- **SNWW Channel Operations: Post-Storm Event**
  - *USCG MSU Port Arthur*
  - *Sabine Pilots*
  - *USACE*
- **Roads, Rail and Shallow-Draft**
  - *TXDOT*
  - *Class I*
  - *Barge*
- **Hurricane Emergency Response: Lessons Learned and Best Practices**
  - *Texas Division of Emergency Management*

# Workforce Development

- Developing a Maritime Education Pathway—K-12, Undergraduate and Graduate Degree Programs. (Sade Chick)

# 2021 CAPM Research Agenda

1	Increasing Resiliency and Safety of Waterways and Ports: A Novel Approach Based on Drone and Artificial Intelligence
2	Vulnerability Assessment and Resilience of Port Systems Under Extreme Weather Conditions
3	Establishing a Solution to the Problem of Managing Dredge Waste
4	Resilience Study for Port-related Refinery Supply Chain Management
5	Use Autonomous Driving to Improve Resiliency and Safety of Freight Transportation System in Port Industry in Severe Climate Change in Southeast Texas
6	Advanced Wetting Dynamics Study: Understanding the Fundamental Physics of Anti-fouling, Anti-Corrosion and Friction Reduction
External	Rail-based, port-centric economic development metrics and opportunities-Sarah Bagwell



# Comments and Questions

# Port Welfare Sub-Committee Report



## Southeast Texas Waterway Advisory Committee April 22, 2021

- Crew Change
- Discussion on Criminalization
- *Texas National Maritime Day Gala*
- *National Maritime Day Observance*
- *Ready Set Sail Program*

**Fr. Sinclair Oubre**

# SETWAC Seafarers' Welfare Committee

Fr. Sinclair Oubre, J.C.L., AFNI

1500 Jefferson Drive

Port Arthur, Texas 77642

Phone: 409-749-0171

Email: [Sinclair.Oubre@stellamarismail.org](mailto:Sinclair.Oubre@stellamarismail.org)

Facebook: [www.facebook.com/Stella-Maris-Diocese-of-Beaumont-107480633974106](https://www.facebook.com/Stella-Maris-Diocese-of-Beaumont-107480633974106)



# Questions?

## Thank You



# Commercial Fisheries

---

Nikki Fitzgerald

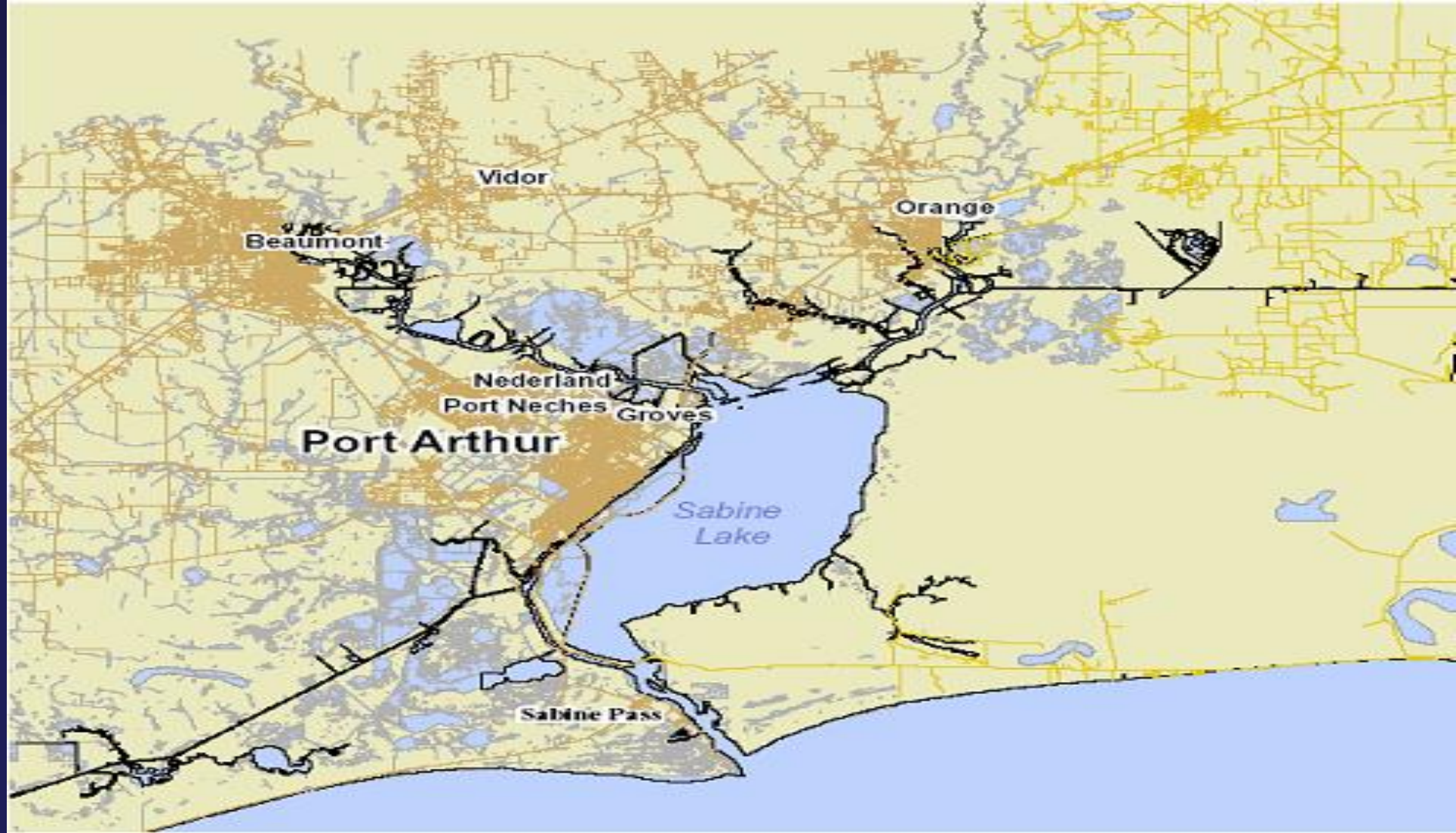


# Update on Safety for Shrimpers





# Report on Hurricane Tour



# **Waterway Maintenance and Improvement Subcommittee Report**

**Larry Fountain, Sabine-Neches Navigation District**



# Update on Deepening



# Sabine-Neches Waterway

## Operations and Maintenance Update

**Timothy J. White, PE, PMP**  
**Resident Engineer**

**Belynda Kinman**  
**Operations Manager**

**USACE – Galveston District**

*SETWAC Meeting*  
*April 22, 2021*



®

US Army Corps of Engineers  
**BUILDING STRONG®**



# **Ongoing Contracts**

## **Sabine-Neches Waterway**



---

**BUILDING STRONG®**



# SABINE-NECHES WATERWAY

## PA 11 Training Dike Rehabilitation



Project:	PA 11 Training Dike Rehabilitation
Type of Work:	Earth Work
Placement Area:	PA 11 Training Dike
Type of Equipment:	Excavators; Dozers; Marsh Buggy
Award	October 2020
Est Completion	May 2021

Contractor: SES Civil & Environmental



**BUILDING STRONG®**



**FY 2021**

# **Future Dredging Contracts**

## **Sabine-Neches Waterway**



---

**BUILDING STRONG®**



# SABINE-NECHES WATERWAY PLACEMENT AREA NO. 8 IMPROVEMENTS



Project:	Sabine-Neches Waterway Placement Area No. 8 Improvements
Type of Work:	Levee Improvements
Placement Area:	PA 8
Type of Equipment:	Excavators; Dozers; Marsh Buggy
Advertise Date:	January 20, 2021
Bid Opening Date:	February 19, 2021
Est Award	April 2021
Est Completion	Dec 2021



**BUILDING STRONG®**



# SABINE-NECHES WATERWAY

## PA 11 Training Dike Rehabilitation



Project:	PA 11 Rehabilitation
Type of Work:	Earth Work
Placement Area:	PA 11 Training Dike
Type of Equipment:	Excavators; Dozers; Marsh Buggy
Award	September 2021
Est Completion	April 2022

Contractor: SES Civil & Environmental



**BUILDING STRONG®**





# SABINE-NECHES WATERWAY

## Areas along the NECHES RIVER



Port Arthur Junction and  
Taylors Bayou will also be  
included in the contract.

<b>Project:</b>	<b>Sabine-Neches Waterway Placement Area No. 8 Improvements</b>
Dredging Depth:	40ft. Authorized Depth
Dredging Quantity:	Est. 4 MCYs
Material Type:	<b>MAINTENANCE</b>
Dredge Type	Pipeline Dredge
Advertisement	June 2021
Bid Opening	July 2021
Award:	August 2021




**BUILDING STRONG®**



# SABINE-NECHES WATERWAY ENTRANCE CHANNEL TO SABINE PASS DEEPENING



<b>Project:</b>	<b>Sabine-Neches Waterway Outer Bar &amp; Bank to Sabine Pass</b>
Dredging Depth:	44 feet
Dredging Quantity:	Est. 31 MCYs
Material Type:	<b>NEW WORK</b>
Placement Areas:	ODMDS 1 – 4 and A-D
Type of Equipment:	Hopper
Award:	Federal: September 2021 SNND: to follow

 **Federal Awarded Contract**  
\*\*Also includes Extension Channel

 **SNND Awarded Contract**



**BUILDING STRONG®**



# SABINE-NECHES WATERWAY

## PORT ARTHUR CANAL TO TAYLORS BAYOU

### DEEPENING



<b>Project:</b>	<b>Port Arthur Canal to Taylors Bayou</b>
Dredging Depth:	44 feet
Dredging Quantity:	Est. 16 MCYs
Material Type:	<b>NEW WORK</b>
Placement Areas:	PA 8
Type of Equipment:	Pipeline
Award:	2021/2022

Contract to be awarded by the Sabine-Neches Navigation District.  
Dependent on Federal Contract.



**BUILDING STRONG®**



**SABINE  
TO GALVESTON  
  
PORT ARTHUR  
&  
ORANGE**



---

**BUILDING STRONG®**



# Orange County Coastal Storm Risk Management Project

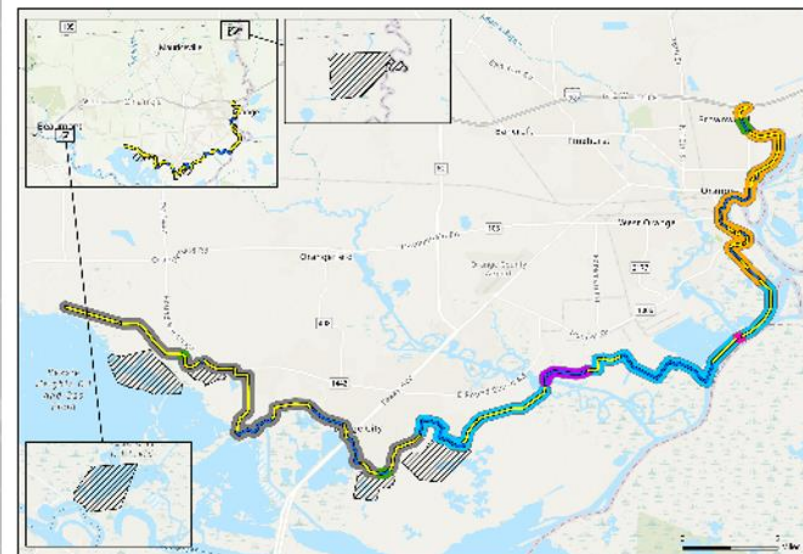


## A new levee/floodwall system:

The Orange County Coastal Storm Risk Management (CSRM) Project includes construction of a new levee/floodwall system to reduce storm surge damage caused by hurricane and tropical storm events that affect the southern half of Orange County along the Sabine River and Bessie Heights Marsh. The proposed project alignment follows the edge of the Sabine and Neches River floodplain from the City of Orange and ends West of Bessie Heights, measuring approximately 26.3 miles. This includes construction of 15.6 miles of levees, 10.7 miles of floodwalls, 7 pump stations, 56 internal drainage structures, 32 closure gates located at road and railway crossings, 2 navigable sector gates and 6 environmental mitigation areas.

## Objectives:

The new CSRM Project is intended to reduce risk to human life and reduce economic damages to business, residents, and infrastructure from storm surge while ensuring no **additional** induced interior flooding.



Orange County  
Coastal Storm Risk Management Project



## Project Schedule:



Contract #	Scope	Contract #	Scope
OC01	Cow Bayou Complex – 84 ft Navigable Gate, Pump Station	OC04	7 Pump stations, tie ins, gates, drainage structures
OC02	2.4 miles floodwall, 3.0 miles levee, 18 gates, drainage structures	OC05	2.6 miles floodwall, 7.6 miles levee, 7 gates, drainage structures
OC02A	4.2 miles floodwall, 4.9 miles levee, 5 gates, drainage structures	OC06	6 Mitigation sites to compensate for impacts to forested wetlands and estuarine marsh
OC03	Adams Bayou Complex – 84 ft Navigable Gate, Pump Station		







## Port Arthur and Vicinity Coastal Storm Risk Management Project



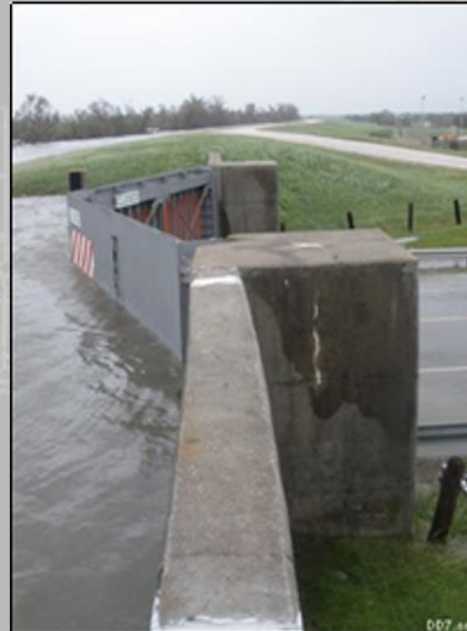
US Army Corps  
of Engineers.

### Reinforcement of an existing levee/floodwall system:

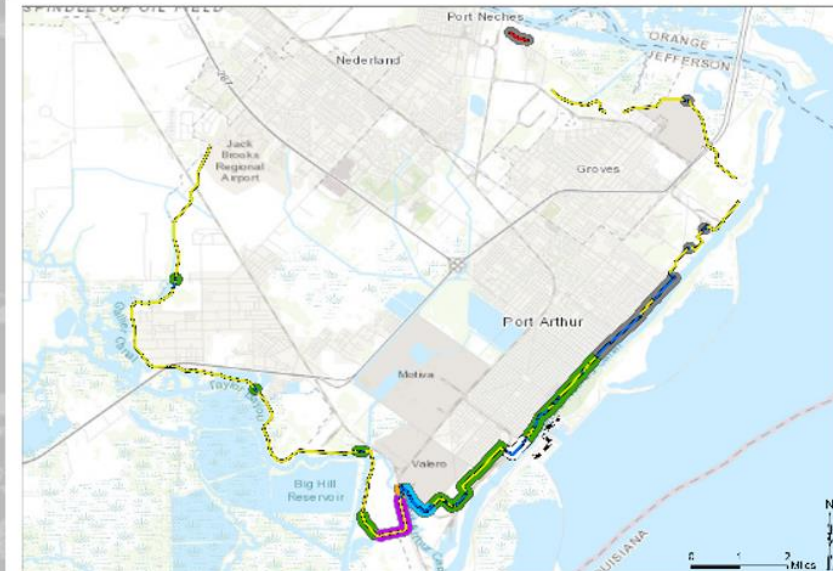
The Port Arthur and Vicinity Coastal Storm Risk Management (CSRM) Project in Jefferson County will result in improvements and additions to the existing Hurricane Flood Protection Project (HFPP). The plan includes raising approximately 5.5 miles of the existing 27.8 miles of earthen levee and constructing or reconstructing approximately 5.7 miles of floodwall. A separate 1,830 feet of new earthen levee will be constructed in the Port Neches area northwest of the existing northern terminus. Additionally, 26 vehicle closure structures will be replaced and erosion protections will be added.

### Objectives:

The improved CSRM system is intended to increase the level of performance and resiliency of the existing Port Arthur and Vicinity HFPP.



Road closure gate



Port Arthur and Vicinity  
Coastal Storm Risk Management Project

### Project Schedule:



Contract #	Scope	Contract #	Scope
PAV01	1.1 miles levee raise	PAV03A	3.3 miles levee raise, 1.9 miles floodwall replacement, 1 gate
PAV02	0.2 miles floodwall replacement	PAV03B	0.02 miles levee raise, 0.5 miles floodwall replacement, 7 gates
PAV03	0.1 miles levee raise, 1.0 miles floodwall replacement, 11 gates	PAV04	0.4 miles levee raise, 0.4 miles new levee, 2.0 miles floodwall replacement, 3 gates



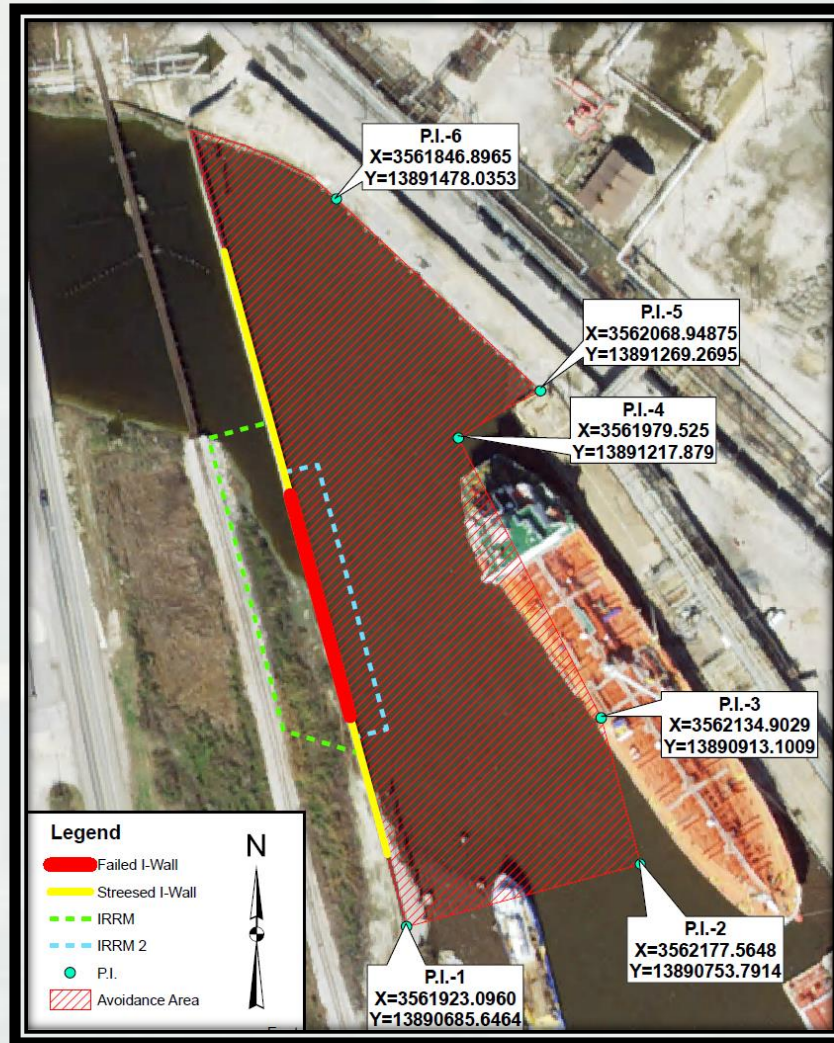
# Taylors Bayou Update



**BUILDING STRONG®**



# Taylors Bayou Current Restriction



## Current Status:

- Vessel Traffic Allowed in Hatched Area shown in Figure with limitation put on tugs.
- Wall and temporary protection is being monitored by DD7 and USACE.



# Questions?



**Belynda Kinman**  
**CESWG-ODN**  
**409-766-6323**

[Belynda.M.Kinman@usace.army.mil](mailto:Belynda.M.Kinman@usace.army.mil)

**Timothy J. White, P.E., PMP**  
**CESWG-ECC-NP**  
**409-985-2000 ext.1412**

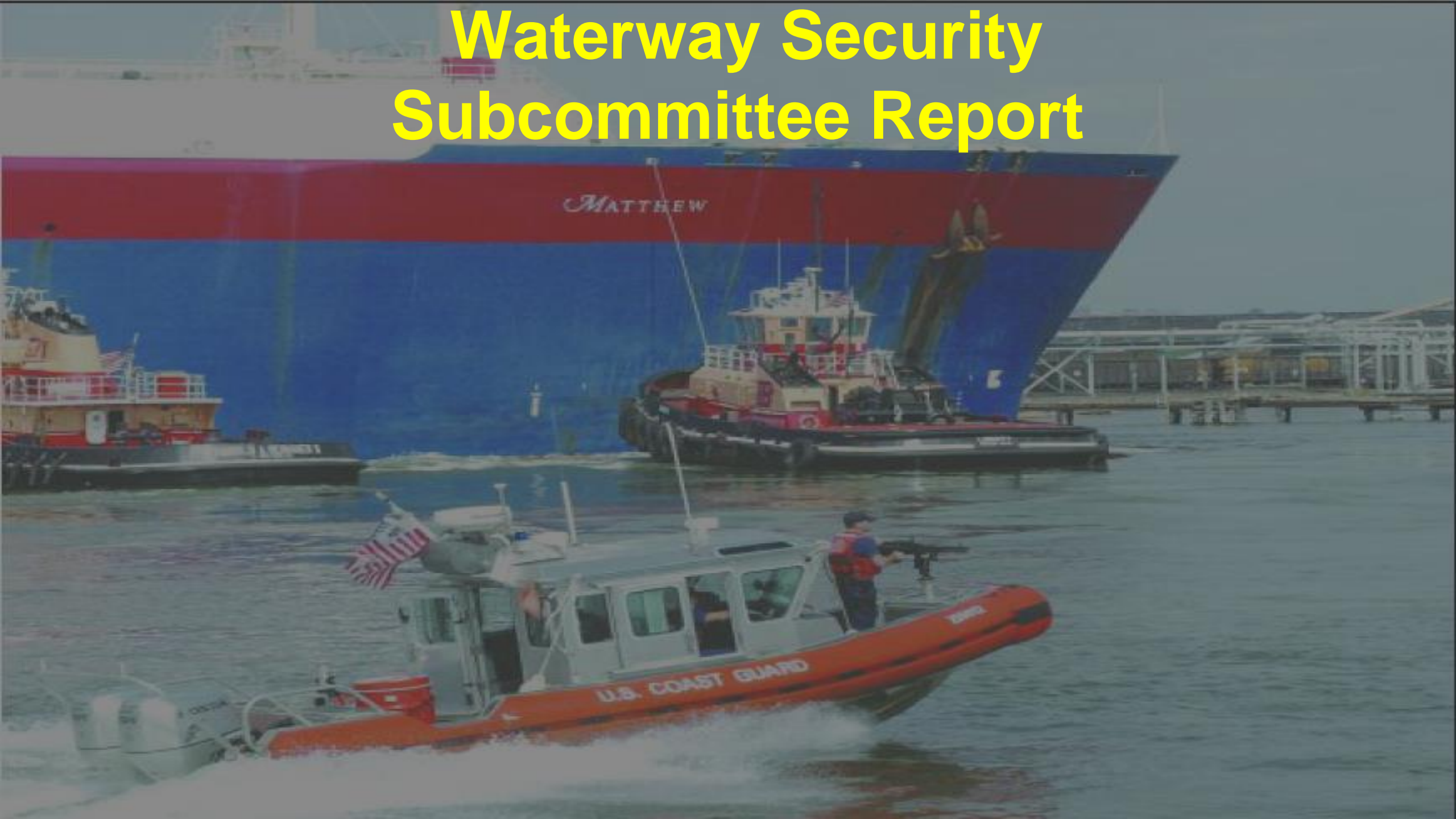
[timothy.j.white@usace.army.mil](mailto:timothy.j.white@usace.army.mil)



**BUILDING STRONG®**



# Waterway Security Subcommittee Report





# AMSC and Port Security Specialist Report

[Jeremy.D.Hansen@uscg.mil](mailto:Jeremy.D.Hansen@uscg.mil)

# AMSC Exercises



- **The SETX AMSC will be participating in a Complex Coordinated Terrorist Attack (CCTA) full scale exercise on 06 May 2021.**
  - **SETX Regional Planning Commission is exercise lead.**
- **Local Port Readiness Committee (PRC) scheduled to conduct a military outload (MOL) exercise on 07 Sep 2021.**



# USCGC ANT Sabine

## ATON REPORT





# Current ATON Discrepancies



AID
Sabine Pass Alpha RRL- Destroyed
Sabine Pass Light 38- Destroyed TRLB
Sabine Pass Light 39- Destroyed TRLB
Port Arthur Canal Light 40- Destroyed TRLB
Port Arthur Canal Light 48- Destroyed TRLB
Port Arthur Canal Light 49- Destroyed TRLB
Neches River U RRL- Destroyed
Neches River Light 40A- Destroyed TRLB

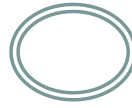
# Current ATON Discrepancies



AID
Sabine River DBN 21- Destroyed TRUB
Sabine River Light 22- Destroyed TRLB



# QUESTIONS/COMMENTS ?





# New Business

# MSU Port Arthur Hurricane Brief

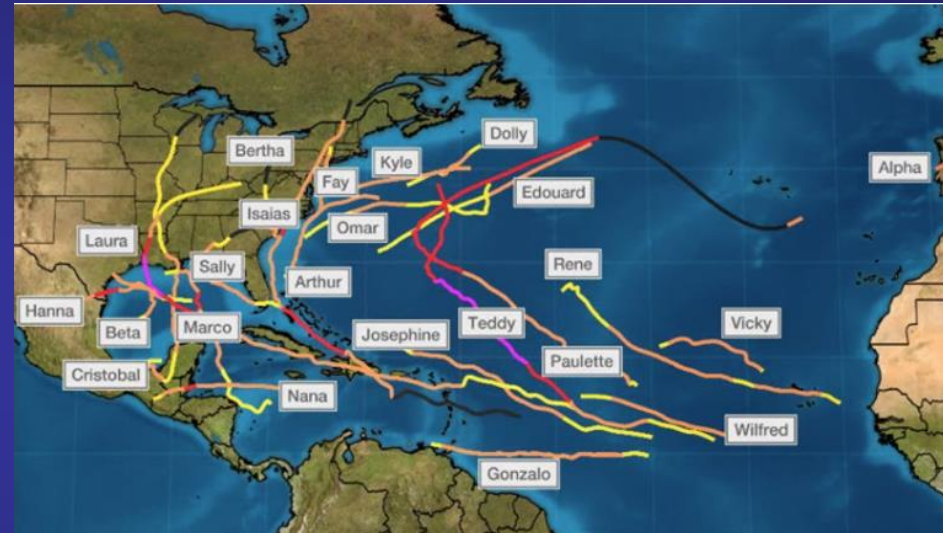


ENS Thomas Usseglio, USCG

# 2020 Hurricane Season Recap



- 30 Named Storms (14 - 18 forecasted)
  - 13x Hurricanes
  - 6x CAT 3 or Stronger
- Earliest Storm: Tropical Storm Arthur (16 May)
- Last Storm: Hurricane Iota (13 NOV)

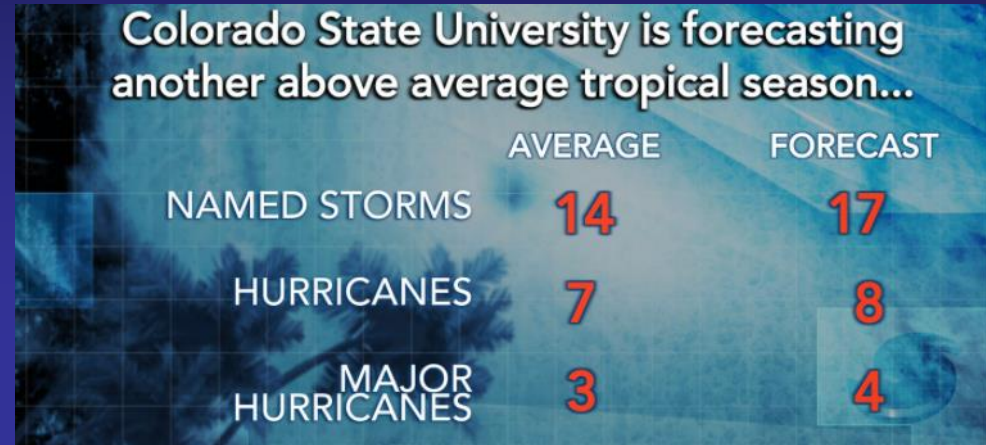




# 2021 HURRICANE SEASON PREDICTIONS



- 17 Named Storms
  - 8 Hurricanes
  - 4 Major Hurricanes (CAT 3 & Above)
  - 1<sup>st</sup> Named Storm: Ana
  - Historically, if the storm tracks south of Florida, it has a higher likelihood of impacting our area



ANA	IDA	ROSE
BILL	JULIAN	SAM
CLAUDETTE	KATE	TERESA
DANNY	LARRY	VICTOR
ELSA	MINDY	WANDA
FRED	NICHOLAS	
GRACE	ODETTE	
HENRI	PETER	

# Factors To Keep In Mind



- ▶ The maritime community should develop severe weather plans based on a full understanding of local risk factors and policies that may impact their operations before, during, and after severe weather.
- ▶ Low elevations along the Gulf Coast offer limited protection from strong winds. Sheltered berths and anchorages are very limited within the Port Arthur COTP Zone.
- ▶ Ports and waterways may be closed to commercial traffic prior to the landfall of a hurricane. The closure is to ensure safety during and after severe weather when communications may be severely impacted. The Coast Guard in conjunction with other government agencies and port partners will assess hazards to navigation and may direct channel surveys prior to opening the channels. A port closure does not automatically mean that all vessels are required to leave port. Contact VTS Port Arthur to address any concerns or to request waivers.



# Recommended Actions For Port Conditions



Port Hurricane Condition	Recommended Actions for Commercial, Oceangoing Vessels and Barges Over 500 GT
Condition Whiskey (Alert – 72 Hrs)	Make all preparations to get underway. Set navigation and radio watch. “Dead” ships, vessels, or barges unable to put to sea must contact VTS Port Arthur. Information should be submitted prior to setting Condition X-Ray.
Condition X-Ray (Readiness – 48 Hrs)	All vessels should prepare to complete cargo operations and depart port within 24 hours, or when Condition Yankee is set. Vessels and barges unable to depart must contact VTS Port Arthur before setting Condition Yankee.
Condition Yankee (Warning – 24 Hrs)	Port is closed to incoming traffic without specific approval of the COTP. All cargo operations should be secured. All vessels are encouraged to put to sea.
Condition Zulu (Danger – 12 Hrs)	Port is closed. No terminal, facility, or vessel operations are permitted.

- ▶ Commercial vessels, including fishing vessels, less than 500 gross tons are recommended to seek shelter north of the Intracoastal Waterway on the Calcasieu River and north of the Neches River Intersection on the Sabine-Neches Waterway.

# Resources For Personal Hurricane Prep



- ▶ **Texas Dept. of Insurance 1-800-252-3439 - [www.tdi.state.tx.us](http://www.tdi.state.tx.us)**
- ▶ **FEMA Information Ready 1-800-BE-READY - [www.ready.gov](http://www.ready.gov)**
- ▶ **American Red Cross Beaumont Chapter 409-832-1644 - [www.redcrossbeaumont.org](http://www.redcrossbeaumont.org)**
- ▶ **National Flood Insurance Program- [www.floodsmart.gov](http://www.floodsmart.gov)**
- ▶ **Southeast Texas Information- [www.setinfo.org](http://www.setinfo.org)**
- ▶ **National Hurricane Center- [www.nhc.noaa.gov](http://www.nhc.noaa.gov)**
- ▶ **National Weather Service Lake Charles- [www.weather.gov/lch](http://www.weather.gov/lch)**

# Waterway Activities



- Riverfest Boat Races / WW Restrictions
  - April 30 – May 2, 2021
- Riverfest Fireworks
  - May 1, 2021 (Rain Date May 2, 2021)
- DSRA Boat Races, Orange, TX
  - May 22 – 23, 2021
- Safety Zone remains in effect for north end of Taylors Bayou

**Mr. Scott Whalen, USCG**

# Ports and Waterways Safety Assessment PAWSA



- Final Report
  - Provided to participating stakeholders on April 16, 2021.
  - Posted to SETWAC website
  - Posted to VTS Port Arthur website
  - Will be posted to NAVCEN website

# VTS/WATERWAYS CONTACTS



- Scott Whalen, Director VTS Port Arthur,  
(409) 719-5086 [scott.k.Whalen@uscg.mil](mailto:scott.k.Whalen@uscg.mil)
- Douglas Hendrix, Operation/Training Manager,  
(409) 719-5083 [douglas.g.hendrix2@uscg.mil](mailto:douglas.g.hendrix2@uscg.mil)
- Vessel Traffic Center, Watch Supervisor 24hrs  
(409) 719-5070 [msuportarthur-vtssup@uscg.mil](mailto:msuportarthur-vtssup@uscg.mil)
- VTS Webpage – <https://www.atlanticarea.uscg.mil/vtsportarthur/>
- Homeport Website – <http://homeport.uscg.mil>



# Mark Your Calendars

## Upcoming SETWAC Meetings



### **Working Group Meeting**

Thursday, July 8, 2021

10:00 am

Sabine-Neches Navigation District Office

### **Full Committee Meeting**

Thursday, July 22, 2021

10:00 am

MSU Port Arthur

