

STATE OF THE WATERWAY - 2019



U. S. PORT RANKINGS 2018

(by total tonnage)

(Millions of Short Tons – 2018 ACOE data)



1	Port of S. Louisiana, LA	275.5	20	Duluth/Superior, MN/WI	35.1
2	Houston, TX	268.9	21	Huntington– Tristate	34.2
3	New York, NY and NJ	140.2	22	Tampa, FL	31.0
4	Beaumont, TX	100.2	23	Pascagoula, MS	27.3
5	Corpus Christi, TX	93.4	24	Richmond, CA	27.2
6	New Orleans, LA	93.3	25	Philadelphia, PA	26.6
7	Long Beach, CA	86.5	26	Seattle, WA	26.0
8	Baton Rouge, LA	82.2	27	Valdez, AK	25.8
9	Port of Virginia	71.7	28	Freeport, TX	25.4
10	Los Angeles, CA	67.8	29	Port Everglades, FL	25.0
11	Mobile, AL	58.6	30	Charleston, SC	24.8
12	Lake Charles, LA	56.9	31	Portland, OR	23.2
13	Plaquemines, LA	56.8	32	Tacoma, WA	22.8
14	Baltimore, MD	44.7	33	Pittsburgh, PA	21.5
15	Texas City, TX	42.6	34	Oakland, CA	19.3
16	Savannah, GA	41.2	35	Jacksonville, FL	17.9
17	Port Arthur, TX	39.8	36	Two Harbors, MN	17.2
18	Cincinnati-Northern, KY	38.5	37	Chicago, IL	16.8
19	St Louis, MO/IL	37.4	134	Orange, TX	1.2

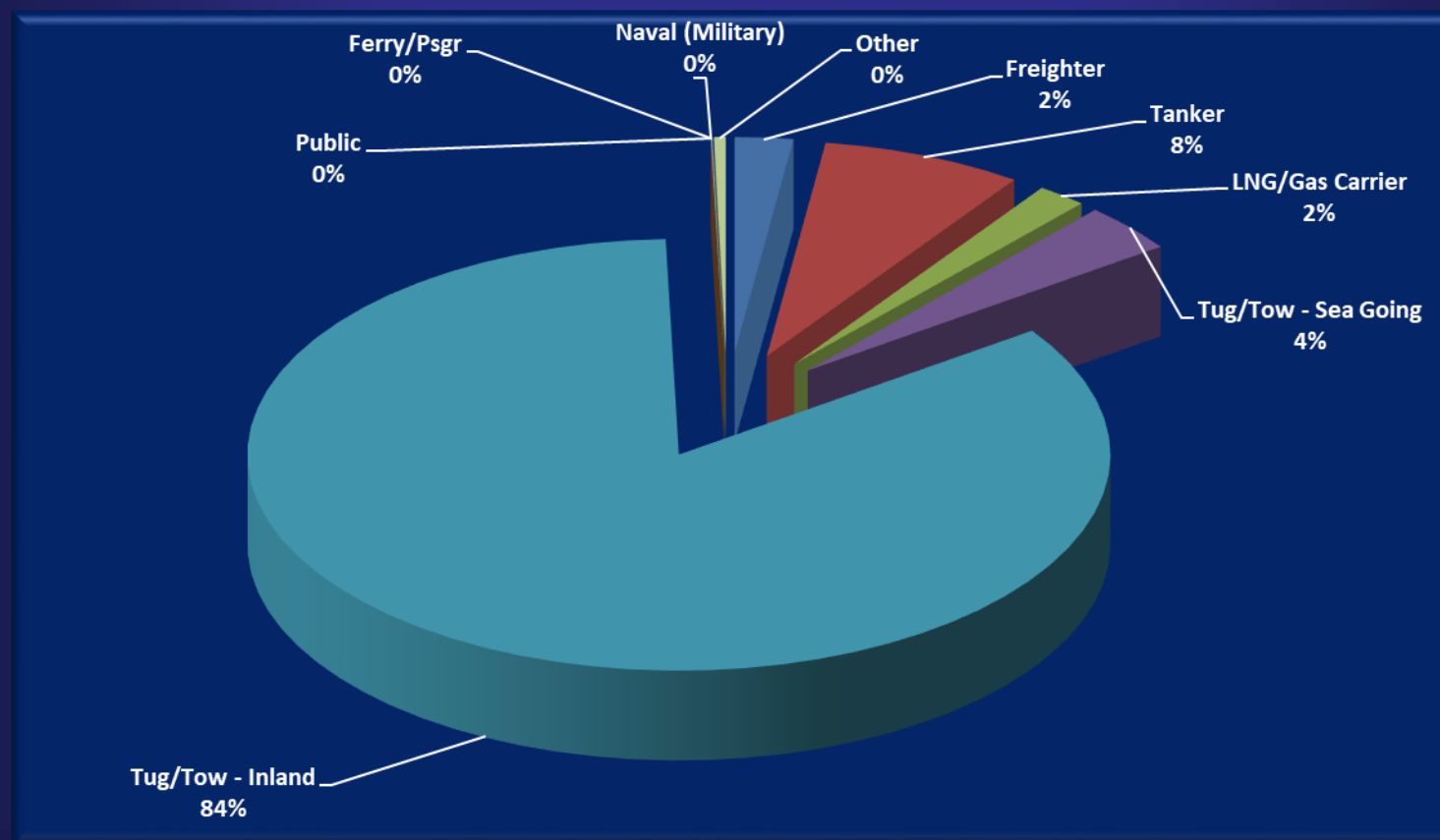
VTS Total Transits – 2019

	<u>2018</u>	<u>2019</u>	<u>%Change</u>
Tug / Tow	52,198	50,311	- 0.04 %
Tanker	4,698	4,326	- 0.08 %
Freighter	1,191	1,251	+ 0.05 %
Gas	925	1,069	+ 15.0 %
Other	<u>350</u>	<u>281</u>	<u>- 20.0 %</u>
Total	58,472	57,238	- 0.02 %

Total Transits 2010 – 2019



TRANSIT SUMMARY by Percentage – 2019



2019 TYPICAL DAY IN THE VTSA



	2018	2019	
TANKER TRANSITS	12.9	11.8	- .08 %
FREIGHTER TRANSITS	3.3	3.4	+ .03 %
GAS CARRIER TRANSITS	2.5	3.0	+ .20 %
TUG (Sea-Going)	5.4	5.7	+ .06 %
TOW TRANSITS	137.6	132.1	- .04 %
OSV / OTHER TRANSITS	0.95	0.80	- .16 %



INCIDENT SUMMARY – 2019

Incidents by Vessel Type

26	Ships
24	Inland Tows
1	Tugs
1	F/V
2	Misc. (e.g. Barges)
1	Facilities (TPC Fire)

55

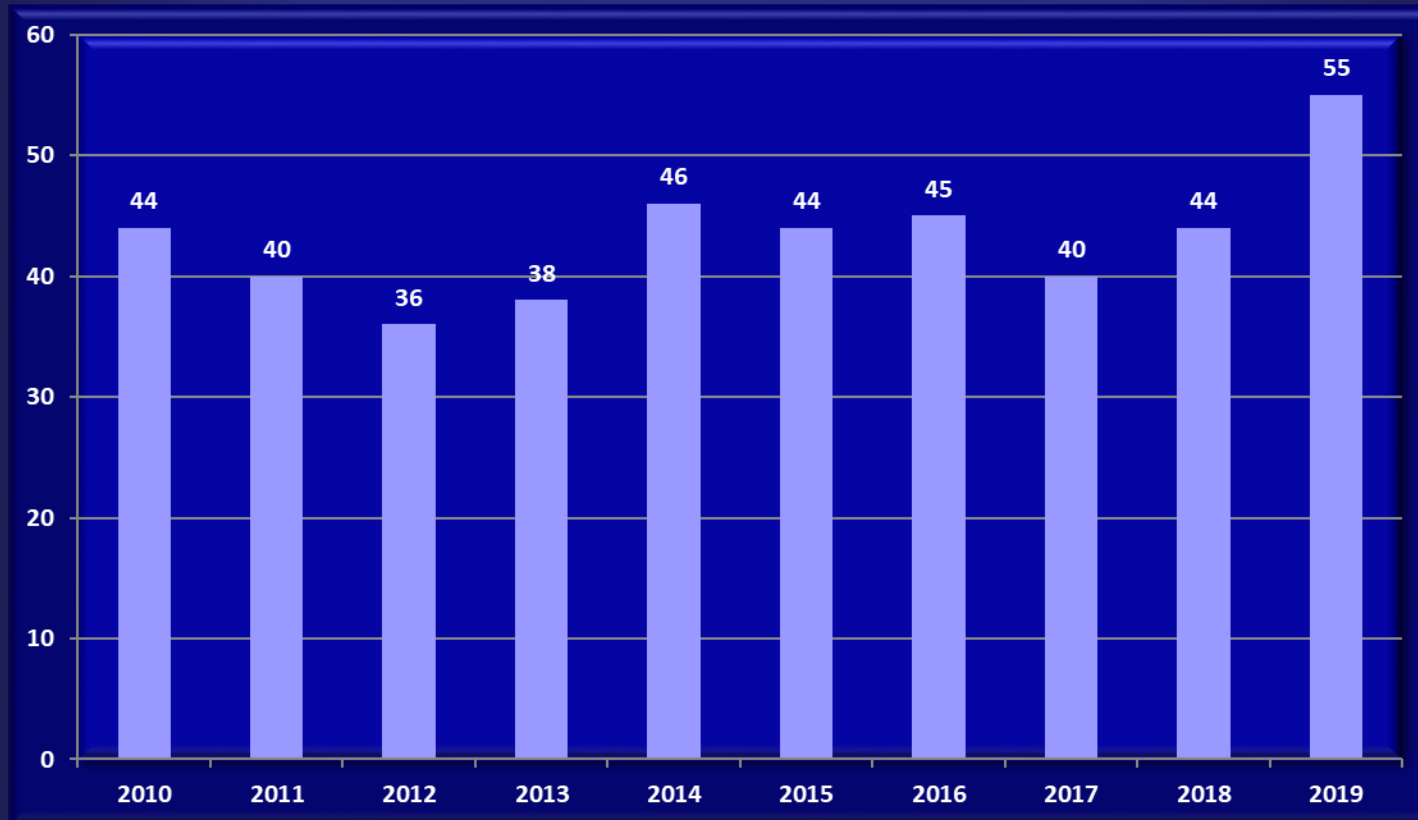
Incidents by Reported Cause

8	COLLISIONS	PY	2
	• ATB and OSV		
6	ALLISIONS		10
	• 2 Reported ATON Knockdowns		
	• 3 Bridge allisions (2 fenders / 1 AD)		
8	GROUNDINGS		3
	• 1 Tanker / 7 ITV		
21	MECHANICAL FAILURE		10
12	MISCELLANEOUS		19
	• 3 Wake Damage		9
	• 1 Breakaway		3
	• 4 Near Miss (2 FVs + 1 outside AOR)		6
	• 1 Fire		1
	• 1 Facility Fire		0

55

44

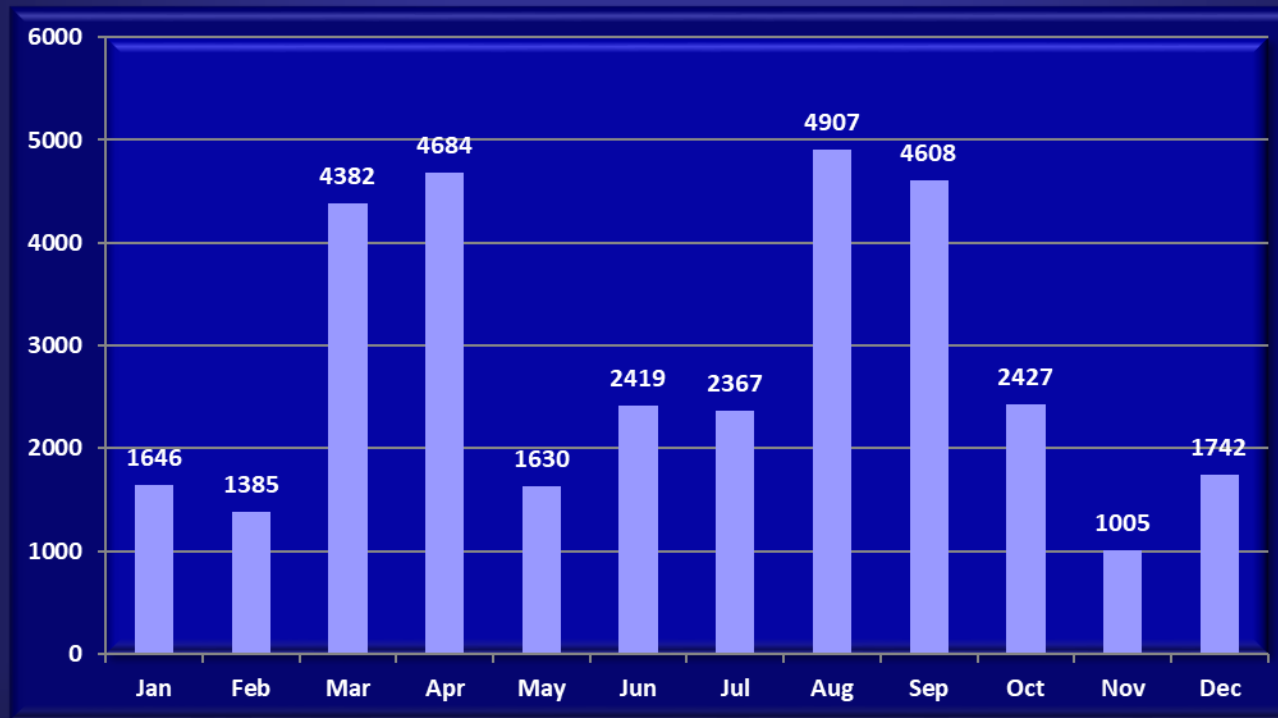
Total Incidents 2010-2019



Transits per Navigation Incident by Month 2019



(Allisions, Collisions, Groundings and Wake Damages only)



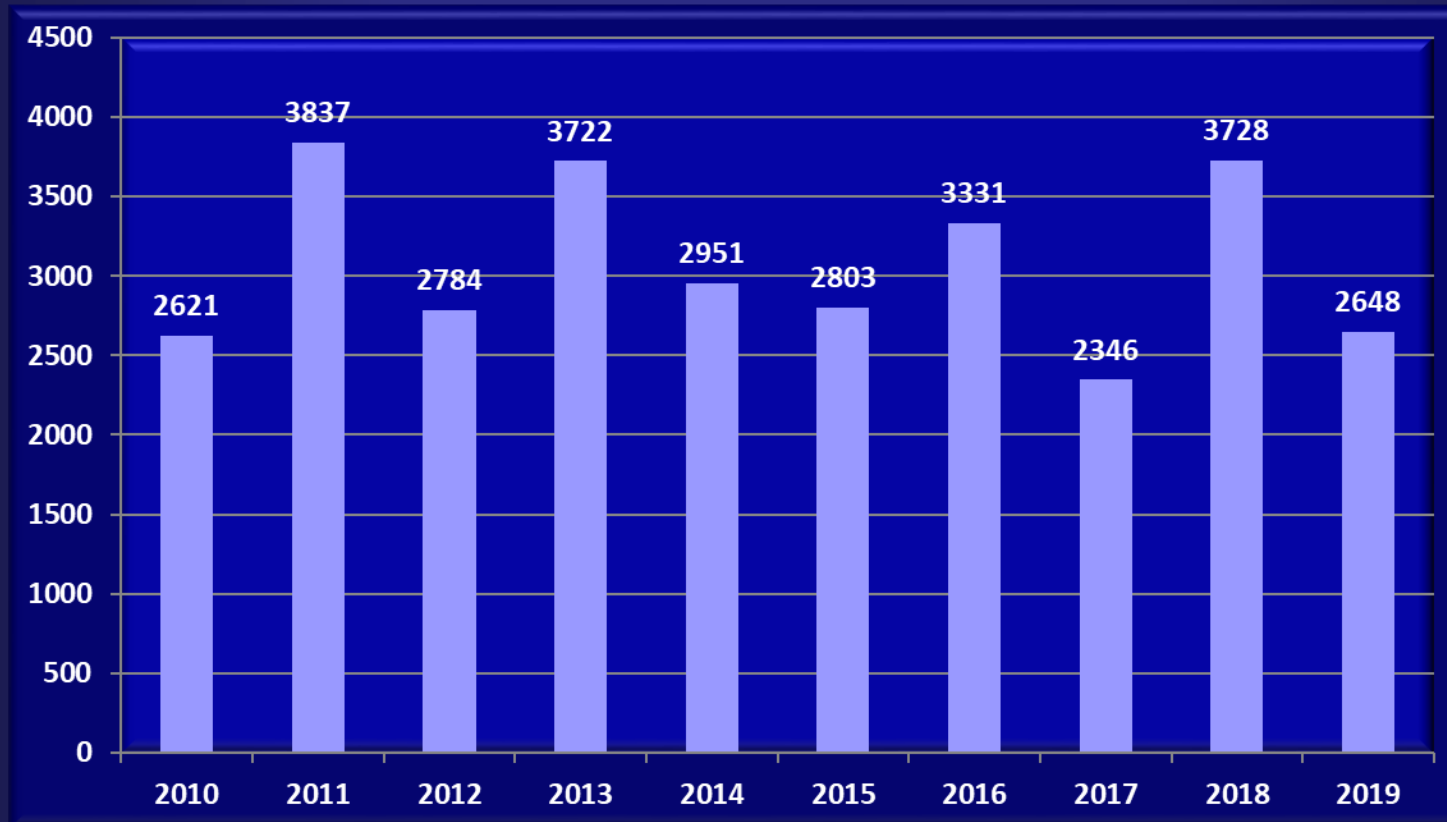
Ship Transits per Incident 2010-2019

(Allisions, Collisions, Groundings and Wake Damages only)



Tow Transits per Incident 2010-2019

(Allisions, Collisions, Groundings and Wake Damages only)

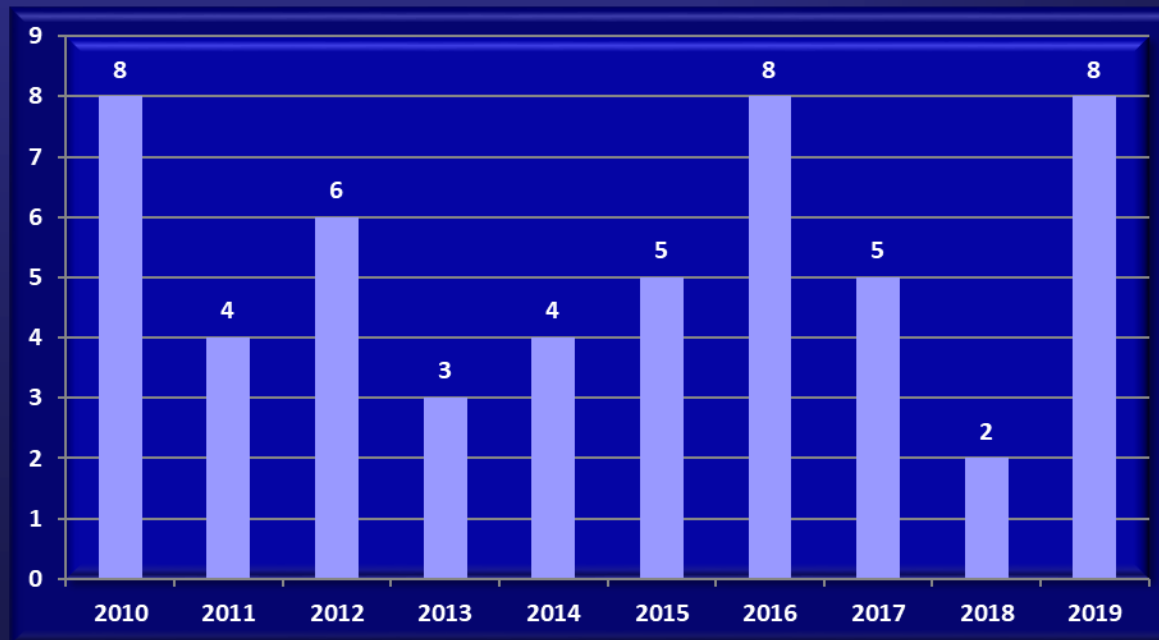


COLLISIONS



2019: 8 Total Collisions

- **6 Tows**
- **1 Ship**
- **1 Other**





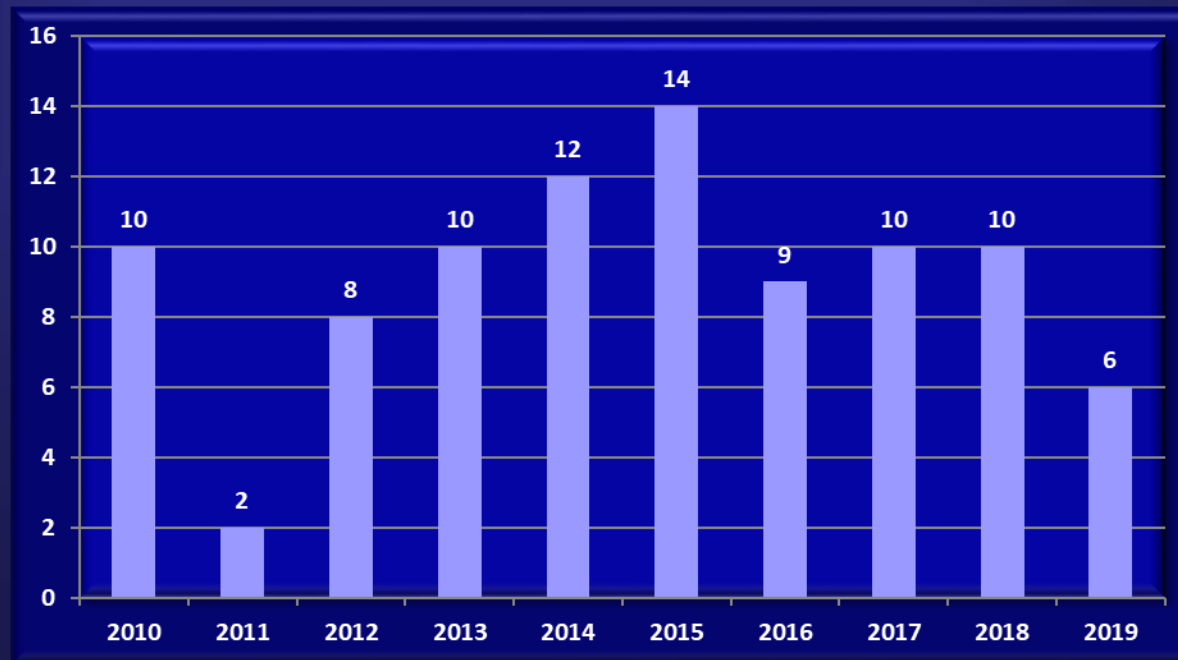
Collisions 2019

ALLISIONS



2019: 6 Total Allisions

- **5 Tows**
- **1 Ship**





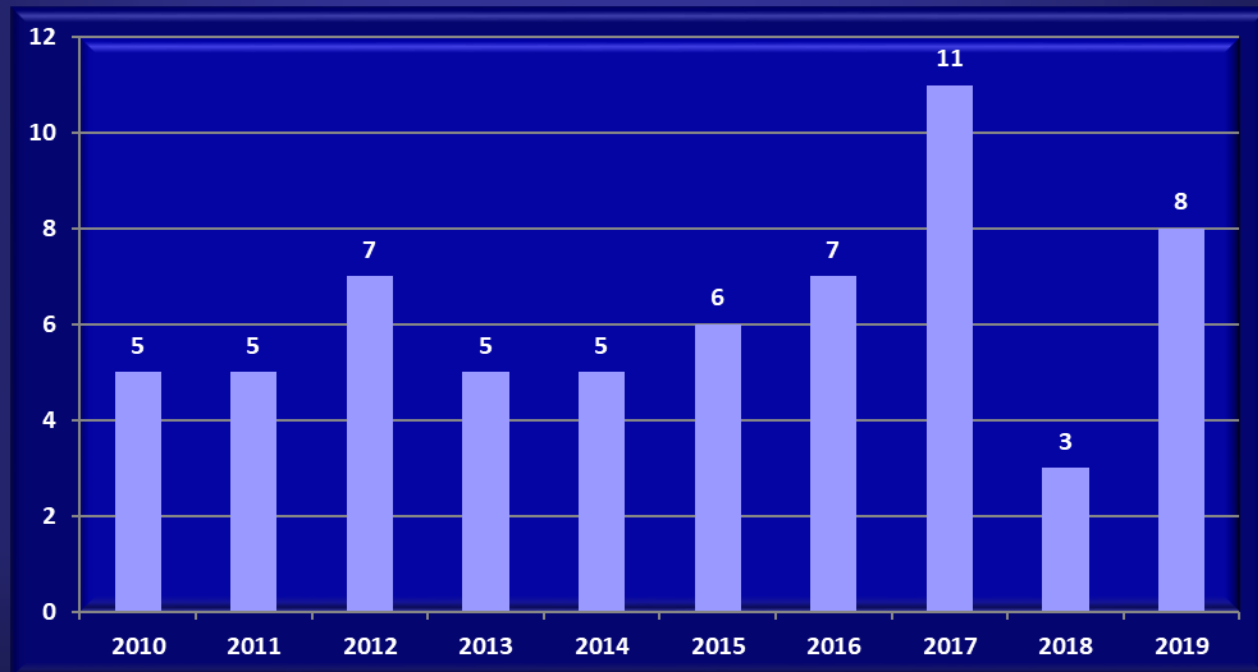
Allisions 2019

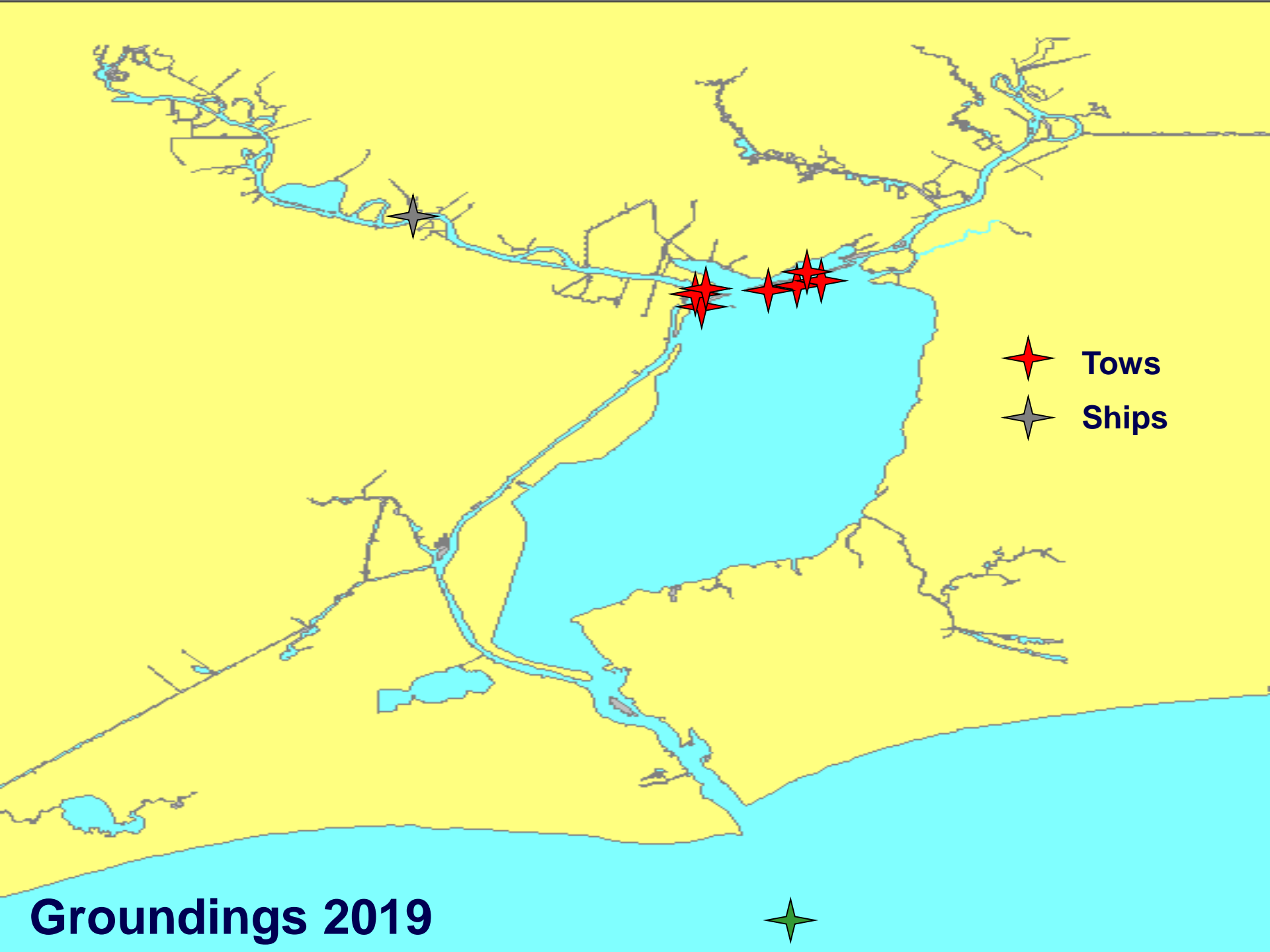
GROUNDINGS



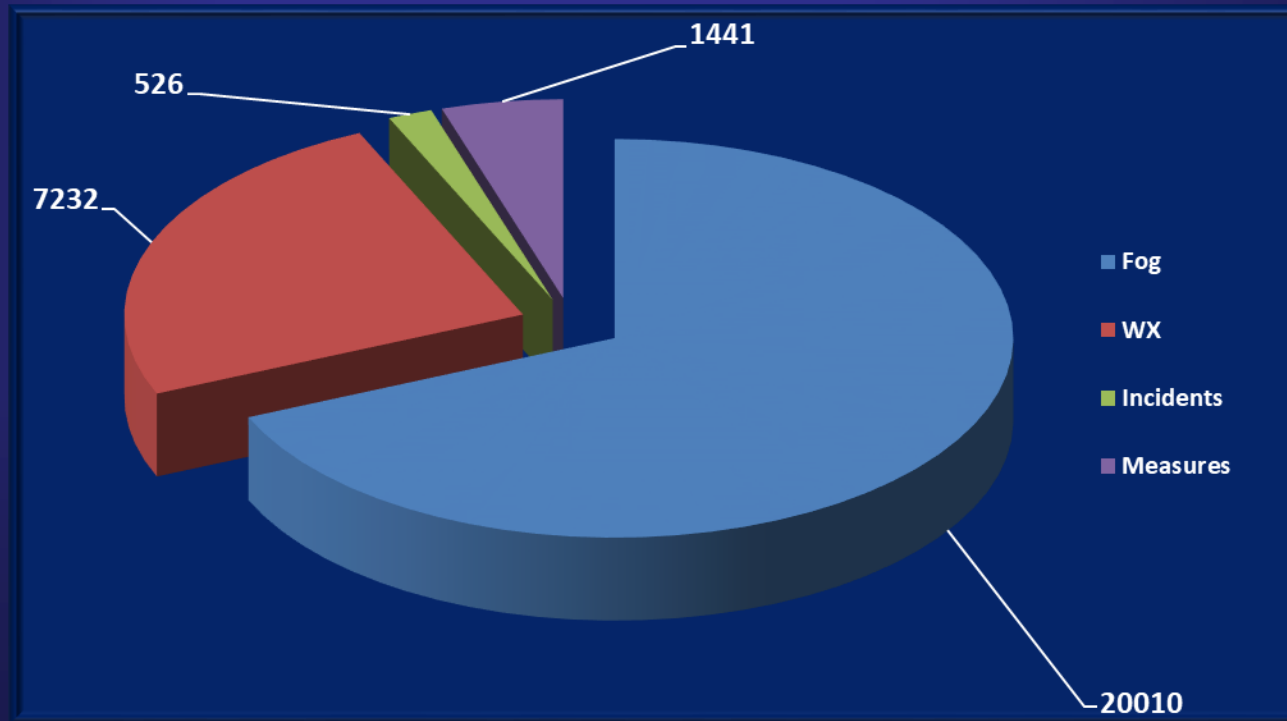
2019: 8 Total Groundings

- **7 Tows**
- **1 Ship**



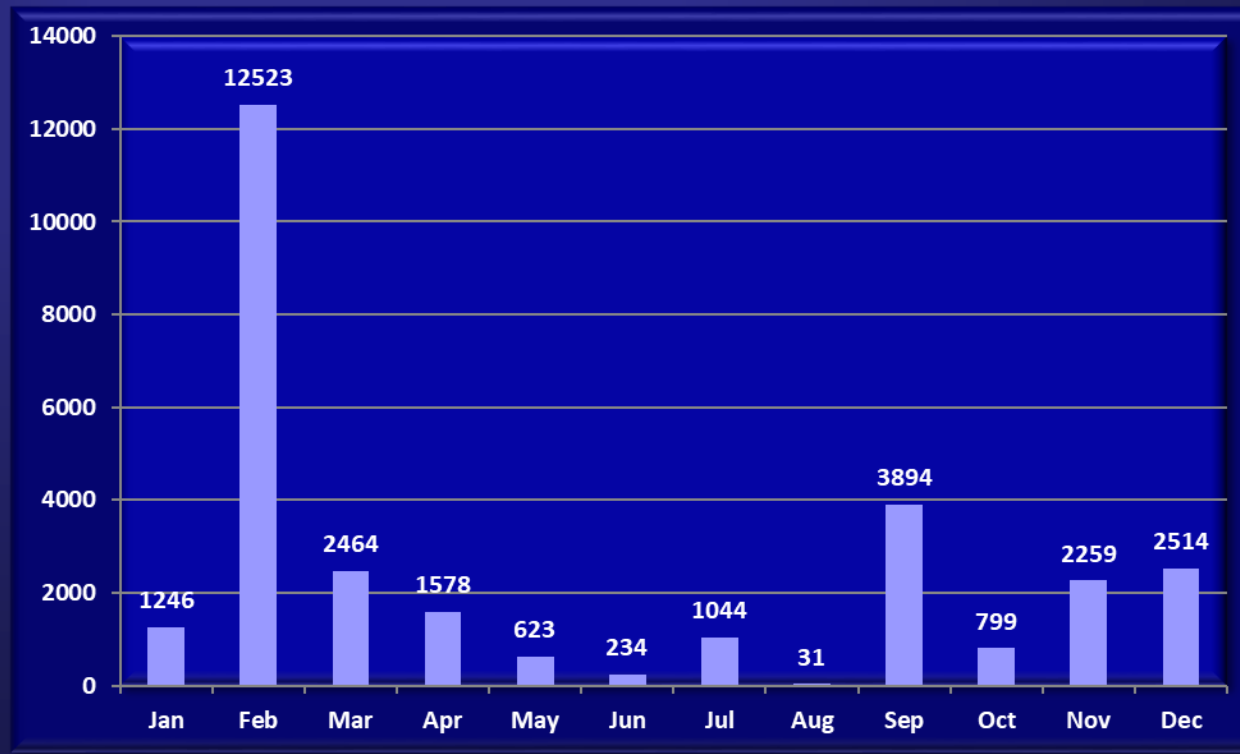


2019 Sabine-Neches Delays (in vessel hours)



2019

Total Vessel Delays by Month (in vessel hours)



2019 INCIDENT HIGHLIGHTS

- 4 Breakaways/Wake Damage:
 - 3 Wake Damage (+6 Wake Complaints)
 - 1 Breakaway
- 2 ATON Knockdowns (Reported)
- Increase in Equipment Failures
- 4 Near Miss Situations:
 - 1 Seaward of the SB Buoy
 - 2 F/V (1 impeding / 1 near miss of jetties)
 - 1 F/V at Sabine Pass Jetties
- 1 Significant Collisions:
 - ATB and OSV at Sabine Jetties

2020 CHALLENGES



- Planning for Deepening Project.
- Planning for increased ship traffic including LHG transits.

VTS/WATERWAYS CONTACTS



- Scott Whalen, Director VTS Port Arthur,
(409) 719-5086 scott.k.Whalen@uscg.mil
- Douglas Hendrix, Operation/Training Manager,
(409) 719-5083 douglas.g.hendrix2@uscg.mil
- Vessel Traffic Center, Watch Supervisor 24hrs
(409) 719-5070 msupportarthur-vtssup@uscg.mil
- VTS Webpage – <https://www.atlanticarea.uscg.mil/vtsportarthur/>
- Homeport Website – <http://homeport.uscg.mil>

