



U. S. Coast Guard Severe Weather Planning

Communications and Expectations

Scott Whalen
VTS Director / WWM / MTSL

Authority

COTP –

- Establish safety zones.
- Direct handling of dangerous cargos
- Order vessels to operate, anchor... to protect life, property, and the environment.

VTS –

- Direct the operation, movement, and anchorage of vessels within a VTS Area... manage traffic within anchorages, RNAs, safety zones...

Port Conditions

The Coast Guard uses Port Conditions to inform the maritime community of the status of the port and the actions the Coast Guard intends to take.

Port Conditions are determined by the anticipated landfall time of sustained gale force winds from a tropical or hurricane force storm.

Port Condition

Timing and Meaning

Port Condition WHISKEY

(Alert – 72 Hrs)

- Set when gale force winds expected within 72-hours.
- Port Status: Open to all commercial traffic.

Port Condition

Timing and Meaning

Port Condition WHISKEY

(Alert – 72 Hrs)

- Set when gale force winds expected within 72-hours.
- Port Status: Open to all commercial traffic.

Port Condition X-RAY

(Readiness – 48 Hrs)

- Set when gale force winds expected within 48-hours.
- Port Status: Open to all commercial traffic.

Port Condition

Timing and Meaning

Port Condition WHISKEY

(Alert – 72 Hrs)

- Set when gale force winds expected within 72-hours.
- Port Status: Open to all commercial traffic.

Port Condition X-RAY

(Readiness – 48 Hrs)

- Set when gale force winds expected within 48-hours.
- Port Status: Open to all commercial traffic.

Port Condition YANKEE

(Warning – 24 Hrs)

- Set when gale force winds expected within 24-hours.
- Port Status: Traffic control measures in effect.

Port Condition

Timing and Meaning

Port Condition WHISKEY

(Alert – 72 Hrs)

- Set when gale force winds expected within 72-hours.
- Port Status: Open to all commercial traffic.

Port Condition X-RAY

(Readiness – 48 Hrs)

- Set when gale force winds expected within 48-hours.
- Port Status: Open to all commercial traffic.

Port Condition YANKEE

(Warning – 24 Hrs)

- Set when gale force winds expected within 24-hours.
- Port Status: Traffic control measures in effect.

Port Condition ZULU

(Danger – 12 Hrs)

- Set when gale force winds expected within 12-hours.
- Port Status: Closed to all traffic.

Port Condition

Timing and Meaning

Port Condition WHISKEY

(Alert – 72 Hrs)

- Set when gale force winds expected within 72-hours.
- Port Status: Open to all commercial traffic.

Port Condition X-RAY

(Readiness – 48 Hrs)

- Set when gale force winds expected within 48-hours.
- Port Status: Open to all commercial traffic.

Port Condition YANKEE

(Warning – 24 Hrs)

- Set when gale force winds expected within 24-hours.
- Port Status: Traffic control measures in effect.

Port Condition ZULU

(Danger – 12 Hrs)

- Set when gale force winds expected within 12-hours.
- Port Status: Closed to all traffic.

Port Condition RECOVERY

- Set once the storm has passed.
- Port Status: CLOSED, OPEN, or OPEN WITH RESTRICTIONS.

Stakeholder Communication

- Broadcast Notice to Mariners
 - VTS Advisory
- Marine Safety Information Bulletin
 - Email Notification
 - Homeport
 - VTS Port Arthur Website



Marine Safety Information Bulletin

13-20

August 25, 2020

Hurricane Laura

SET PORT CONDITION YANKEE

The latest National Weather Service (NWS) advisory for Hurricane Laura indicates its track will directly impact the southeast Texas / southwest Louisiana coasts. Hurricane Laura is expected to strengthen to potentially Category 3 as it crosses the Gulf of Mexico.

Therefore, effective at 4:00 P.M. CDT, August 25, 2020, the Coast Guard Captain of the Port, Port Arthur (COTP) has set **Port Condition YANKEE** for the ports of Beaumont, TX; Port Arthur, TX; Orange, TX; Sabine, TX; and Lake Charles, LA including all tributaries and connecting waterways. Tropical storm force winds or greater from Hurricane Laura are expected to impact the southeast Texas/southwest Louisiana coasts with within 24 hours. The

safe harbor in the northern reaches of the waterway. Survey places to moor or anchor to safely ride out a tropical storm or hurricane, and make available the necessary heavy weather mooring gear. Vessels shall not moor in locations that impede the safe transit of vessels in the channel. By regulation, vessels intending to moor at 33 CFR 105 facilities must have an agreed upon security arrangement with the facility prior to the vessels mooring.

This notice will be posted on the Coast Guard's HOMEPORT website at <http://homeport.uscg.mil> and the VTS website at <https://www.atlanticarea.uscg.mil/vtsportarthur/>. If you have any questions regarding this notice, please call MSU Port Arthur at (409) 723-6500 or MSU Lake Charles at (337) 912-0073.

//s//

M. A. WIKE
Captain, U. S. Coast Guard
Captain of the Port



VTS PORT ARTHUR - HOME

WORKING WITH VTS ▾

- VTS REGULATIONS
- VTS SERVICES
- VTS COMMUNICATIONS
- REPORTING POINTS

AIS IN A VTS AREA

DOWNLOADS

HURRICANE SEASON

FREEDOM OF INFORMATION ACT

MSIBS

LINKS

CONTACT US

Marine

To subscrib
"Marine Sat

Eff

Older

- 52-20
- 08-20
- 01-20
- USCC
- 12-18
- 02-18
- 02-18
- 09-11
- 03-11
- 10-09

20

- 52-20
- 51-20
- 50-20
- 49-20
- 48-20



Email Updates

To sign up for updates or to access your subscriber preferences, please enter your contact information below.

Email Address *

Submit

Cancel

Authority: 44 U.S.C. 3101

Purpose: The Department of Homeland Security collects the information to distribute notices, updates, and subscriptions, as requested by the user.

Routine Uses: The Department of Homeland Security will share with contractor, GovDelivery, to distribute the requested information.

Disclosure: Furnishing this information is voluntary; however failure to provide this information may prevent the individual from receiving the information requested.



Missions

Port Directory

Featured Homeport Links

Search...

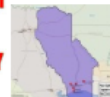
Hide COTP Details

Captain of the Port Details



MARINE SAFETY UNIT PORT ARTHUR (08-33241)
2901 TURTLE CREEK DRIVE
PORT ARTHUR TX
Primary Phone: (409) 723-8500
Emergency Phone: (409) 723-8500
Fax Number: (409) 723-8534
Rescue 21 VHF DSC MMSI Number:

Response Phone: 409-719-5011
Incident Mgmt. Phone: 409-719-5034
Enforcement Phone: 409-719-5013
Prevention Phone: 409-723-8584
Inspection Phone: 409-723-8572
Investigations Phone: 409-723-8591
Waterways Management Phone: 409-719-8080
Prep/Planning Phone: 409-723-8525
Facilities Branch Phone: 409-723-8590
Commercial Fishing Vessel Phone: N/A
Foreign Vessel Exams Phone: N/A
Facility Inspection Branch Phone: 409-719-5033



National Response Center Number: 800-424-8802 - Contact the NRC for oil spills, hazmat releases, and America's Waterway Watch.

> [Area Maritime Security Plans](#)

> [Local Contingency Plans](#)

[Marine Transportation System Recovery Plan \(MTSRP\)](#)

Safety Notifications

- > [Safety Alerts](#)
- > [Notice to Mariners](#)
- > [Vessel Control Report](#)

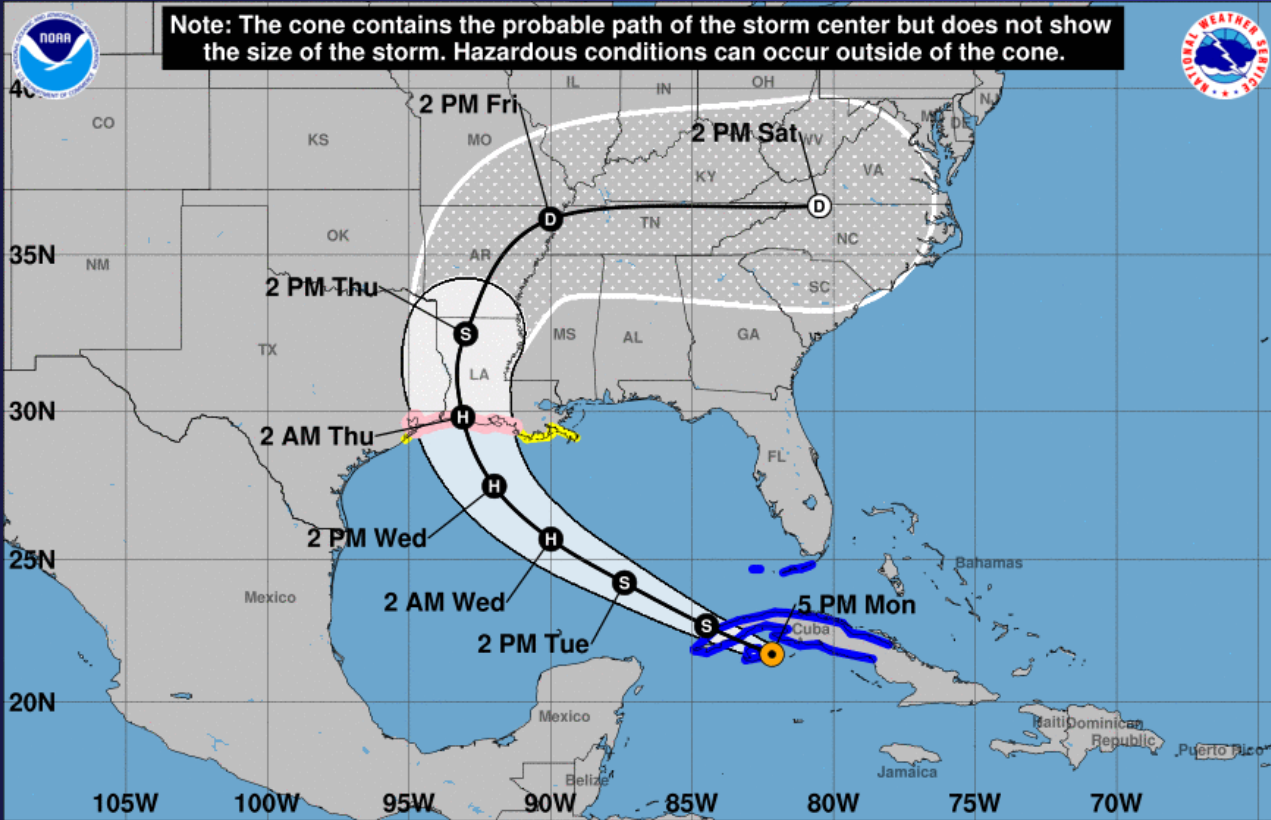
- > [Safety Zones](#)
- > [COTP Orders](#)
- > [MSIB](#)

MSIB 01-21 (Scheduled Channel Closure Neches River, Port Neches, TX Riverfest 2021)
MSIB 52-20 (Ovesize Tow Permits - Port Arthur COTP Zone)
MSIB 51-20 (Port Condition Normal - Calcasieu Waterway)
MSIB 50-20 (Hurricane Zeta - Port Condition Recovery)
MSIB 49-20 (Tropical Storm Zeta - Set Port Condition Whiskey)
MSIB 48-20 - Sabine Bank Channel Obstruction - Rig JASMINIA Update 3 and Final (22 Oct 20)

Considerations

- Storm Size, Tracking and Timing
- Ports Affected
- Stakeholder Differences
- Control Measures to be Implemented

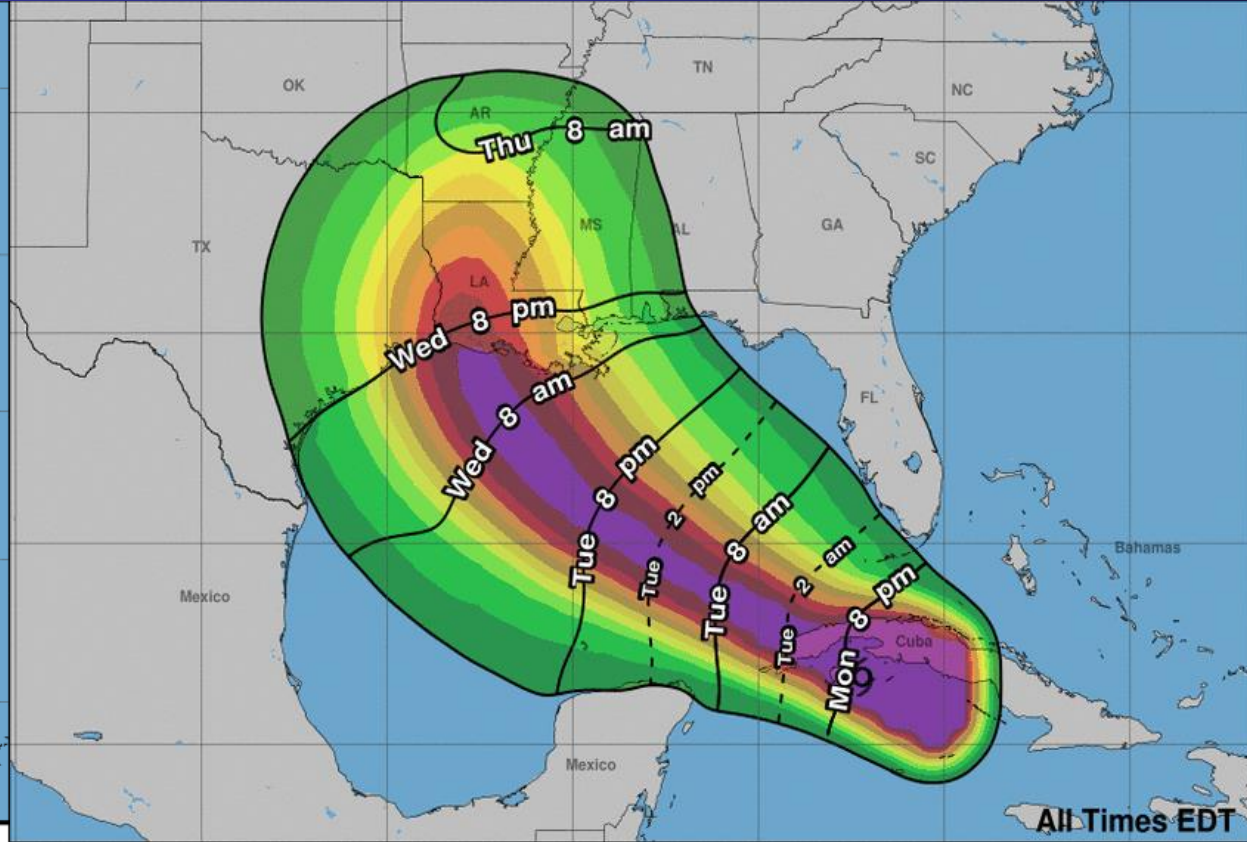
Storm Tracking and Timing



Tropical Storm Laura
 Monday August 24, 2020
 5 PM EDT Advisory 20
 NWS National Hurricane Center

Current information: ●
 Center location 21.7 N 82.2 W
 Maximum sustained wind 60 mph
 Movement WNW at 20 mph

Forecast positions:
 ● Tropical Cyclone ○ Post/Potential TC
 Sustained winds: D < 39 mph
 S 39-73 mph H 74-110 mph M > 110 mph

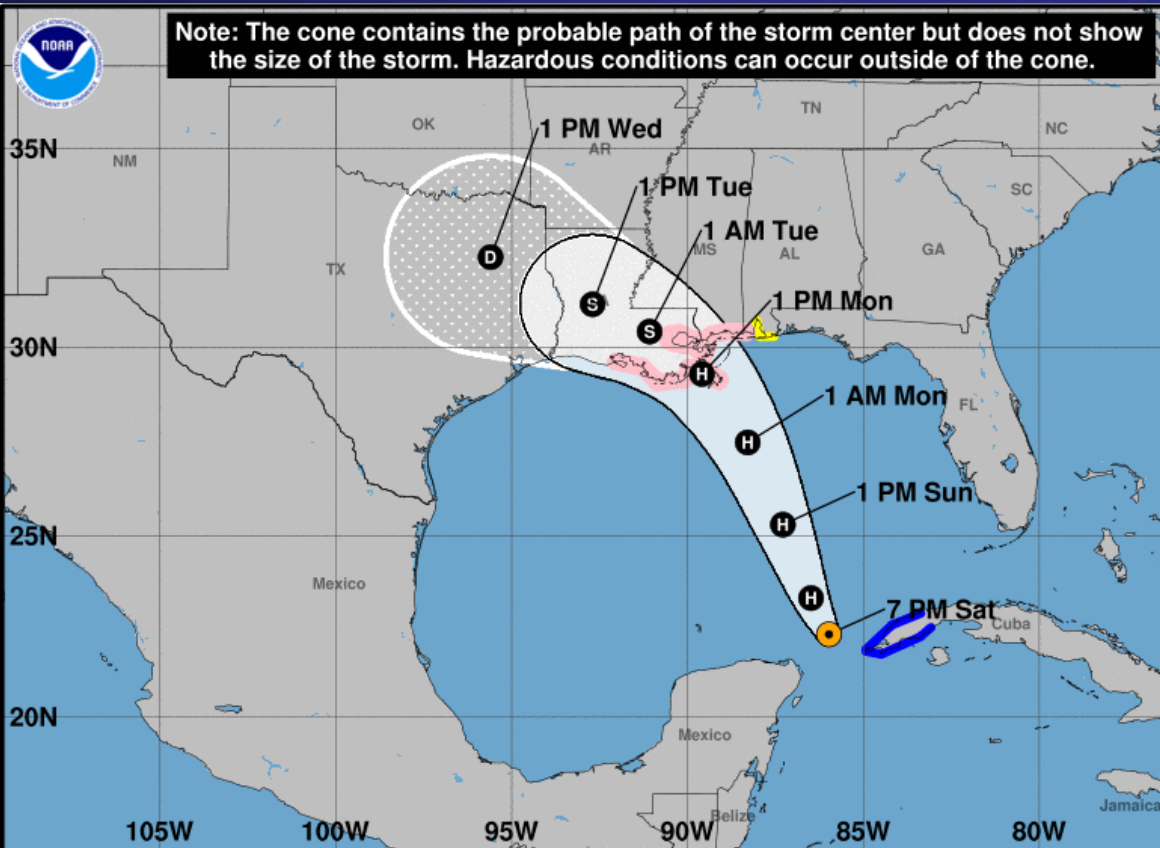


Tropical Storm Laura
 Mon. Aug. 24, 2020 5 pm EDT
 Advisory 20

Storm Location & Wind Speed
 ○ < 34 kt (39 mph)
 ○ 34-63 kt (39-73 mph)
 ● ≥ 64 kt (74 mph)

5-day chance of receiving sustained 34+ kt (39+ mph) winds
 5 10 20 30 40 50 60 70 80 90 100 %

Storm Tracking and Timing

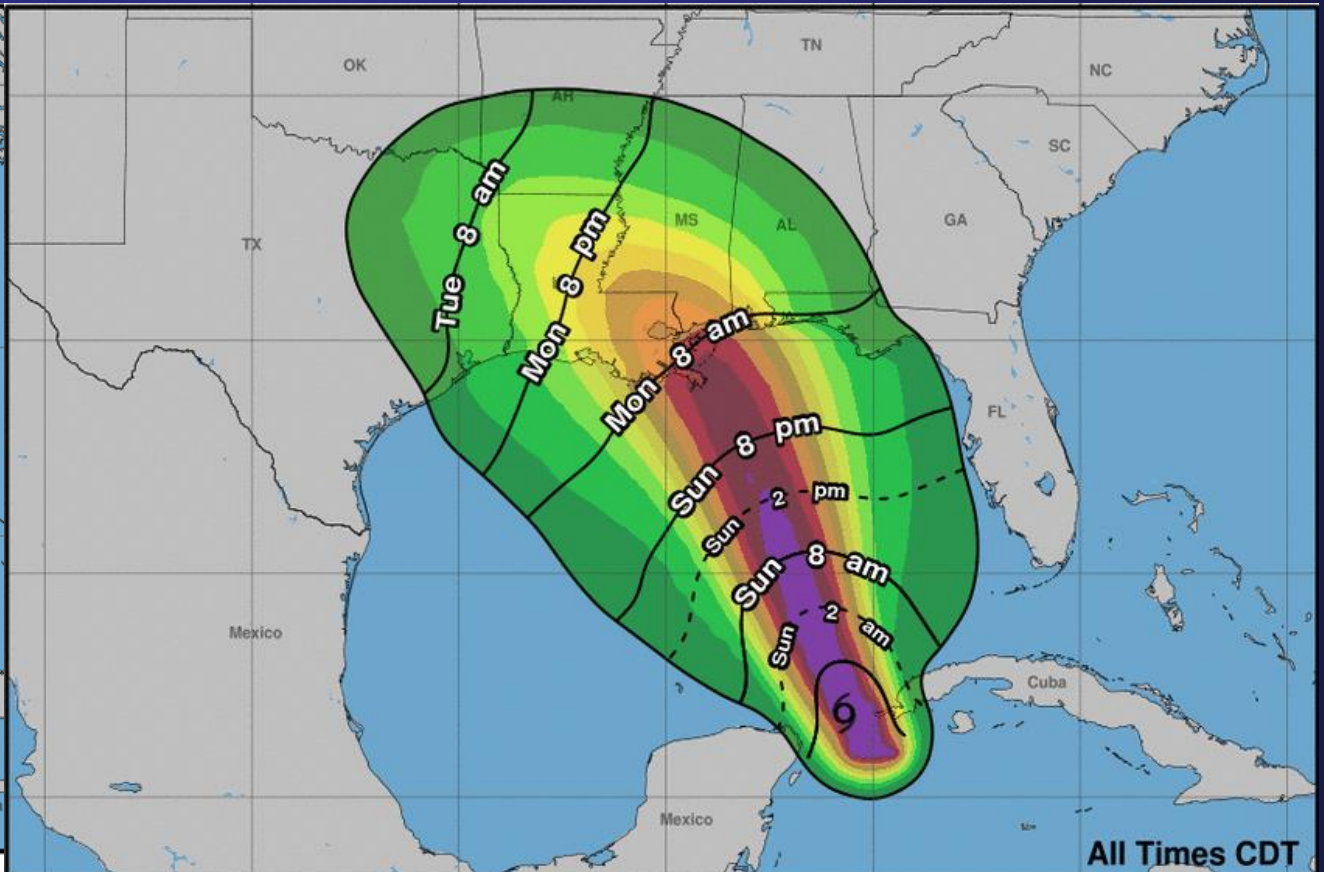


Note: The cone contains the probable path of the storm center but does not show the size of the storm. Hazardous conditions can occur outside of the cone.

Tropical Storm Marco
 Saturday August 22, 2020
 7 PM CDT Intermediate Advisory 10A
 NWS National Hurricane Center

Current information: ●
 Center location 22.3 N 86.0 W
 Maximum sustained wind 65 mph
 Movement NNW at 13 mph

Forecast positions:
 ● Tropical Cyclone ○ Post
 Sustained winds: D < 39
 S 39-73 mph H 74-110 mph



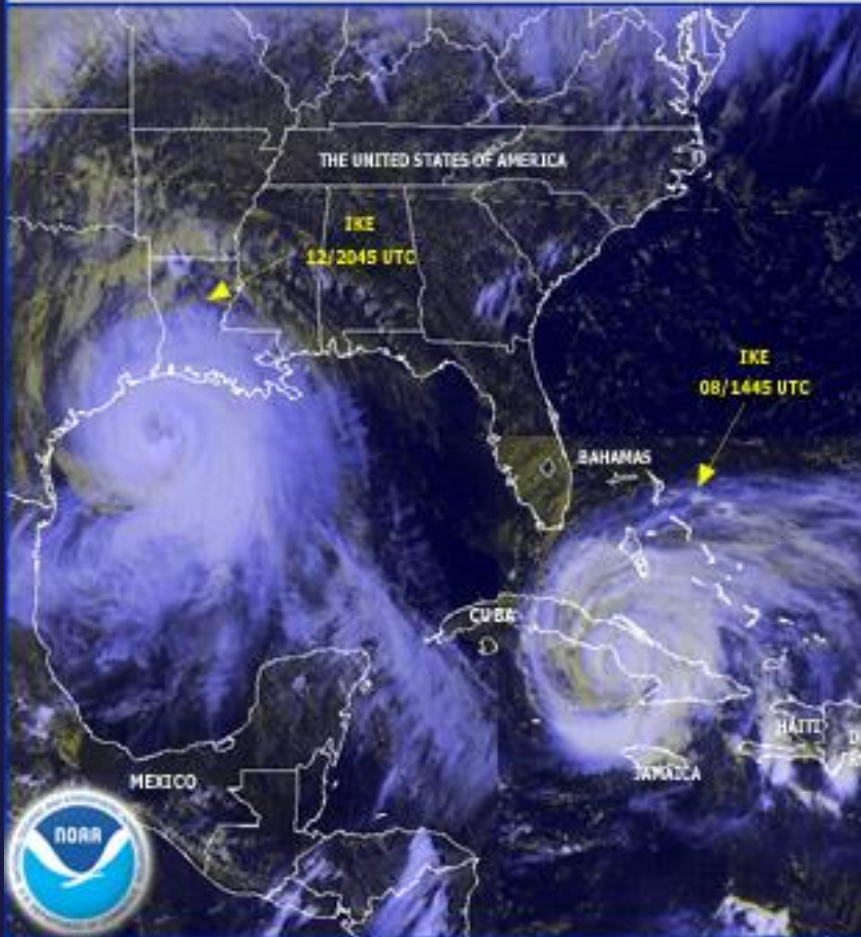
Tropical Storm Marco
 Sat. Aug. 22, 2020 4 pm CDT
 Advisory 10

Storm Location & Wind Speed
 ○ < 34 kt (39 mph)
 ○ 34-63 kt (39-73 mph)
 ● ≥ 64 kt (74 mph)

5-day chance of receiving sustained 34+ kt (39+ mph) winds
 5 10 20 30 40 50 60 70 80 90 100 %

Storm Size

These GOES-10 images below show the track of Hurricane Ike. The storm's center made landfall in Galveston, Texas just west of 0710 UTC.



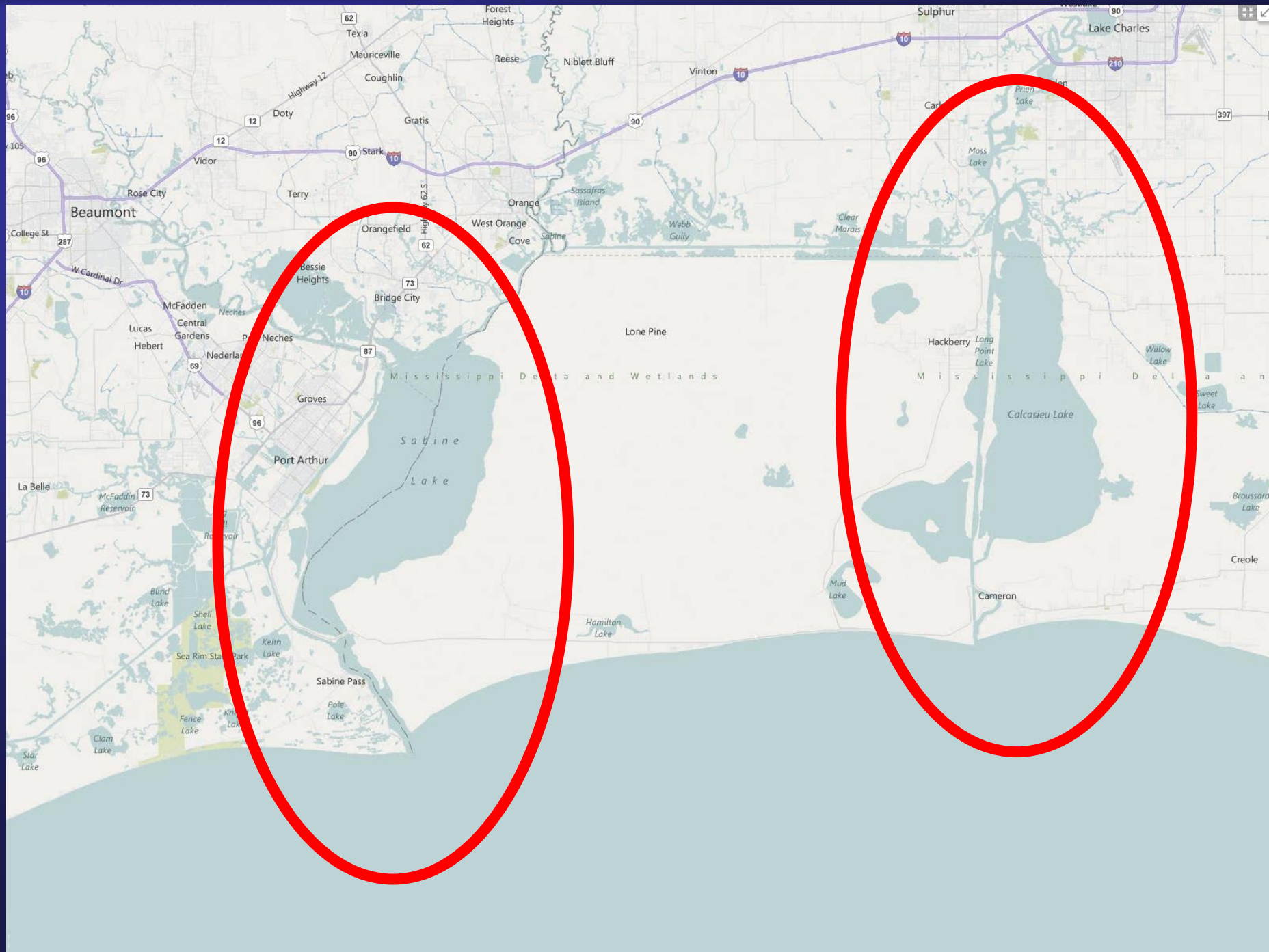
Storm Size



Storm Size



Ports Affected



Stakeholder Differences

- Piloted Ships, Inland Tows, F/V, Recreational
 - Commercial >500 Gross Tons vs. < 500 Gross Tons
 - Storm Avoidance
 - Getting Caught in the Wrong Location
 - Preparing the Port

Control Measures to be Implemented

- Cargo Operations
- Acceptable Anchoring/Mooring Locations
- Critical Infrastructure
 - Bridges
 - Floodwall Protection / Levees



scott.k.whalen@uscg.mil

vtspa-sup@uscg.mil