



Full Committee Meeting
28 April, 2022

Navigation Subcommittee Report

Captain Andrew Guidry, Sabine Pilots





Report on Near Miss Working Group Meeting



Report on Alpha Range



Education, Research and Workforce Development Subcommittee Report

Mr. Erik Stromberg, Lamar University



CENTER FOR
ADVANCES IN PORT MANAGEMENT
LAMAR UNIVERSITY

SETWAC FULL COUNCIL MEETING—APRIL 28, 2022

EDUCATION, RESEARCH AND WORKFORCE
DEVELOPMENT COMMITTEE

Erik Stromberg
Sade Chick

MEMBER THE TEXAS STATE UNIVERSITY SYSTEM™

Continuing Education—Upcoming Webinars/Workshops

- May 27 (Friday): Annual Hurricane Planning Workshop
- June 24 (Friday): Workforce Inclusion Webinar
- July 5-29: Introduction to US Port and Freight Transportation Industries (annual course for DoD logisticians)
- August 26 (Friday): Annual Cyber Security Update
- September 9, 10 (Friday, Saturday): Port and Terminal Asset Management Course and Certification (cosponsored by ASCE COPRI AM task committee)
- October 14 (Friday): Digitalization Technologies Facilitating Cargo Movement and Handling in SE Texas (in conjunction with Port Digitalization s/c, TRB Ports and Channels Committee)
- November 4 (Friday): Primer on Developing Economic Impact Assessments
- December 9 (Friday): Economic Development Strategies—Rail-based, Port-centric

CAPM-Sponsored Research at Lamar

2023: RFP to be released in June 2022. Please contact me with suggestions.

2022: In progress.

- Application of Elastomeric Coatings to reduce the Vibration in the Propeller Shafts System used in Marine Industry
- Development of an Effective Ejector-Pump System to Enable Sustainable Sediment Removal for Port and Other Coastal Infrastructures

2021: Completed. See lamar.edu/portmanagement

- Increasing Resiliency and Safety of Waterways and Ports: A Novel Approach Based on Drone and Artificial Intelligence
- Vulnerability Assessment and Resilience of Port Systems Under Extreme Weather Conditions
- Establishing a Solution to the Problem of Managing Dredge Waste
- Resilience Study for Port-related Refinery Supply Chain Management
- Use of Autonomous Vehicles to Improve Resiliency and Safety of Freight Transportation in Southeast Texas
- Advanced Wetting Dynamics Study: Understanding the Fundamental Physics of Anti-fouling, Anti-Corrosion and Friction Reduction

Workforce Development

- BISD Maritime Program Update:
 - Students complete program with NCCER Certification, TWIC, Forklift Certification
 - Coordinating with State to incite more ISDs to develop maritime programs.
- LIT: Skid Equipment Project
- LSCO: OS curriculum expansion
- LU: Asset management certification
- Logistics programs are in development by LIT, LSCO and LU.
- Cyber security program in development by LIT and LU.
- May 8-15: Transportation Week

- Workforce Development Subcommittee: Next meeting—May 26. Contact: Sade Chick (sc@pobtx.com; 409-835-5367).
- Education and Research -- Needs SETWAC member input. Please contact me with your suggestions. Erik Stromberg (rstromberg@lamar.edu; 409-880-7121; 910-617-6800)



Southeast Texas Waterway Advisory Committee

Seafarer Welfare Committee

April 28, 2022

New Director at Port Arthur International Seafarers' Center

Mary Kate Flanagan

- Graduate of Texas A&M Maritime Academy
- Earned 3rd Mate License
- Worked with Flanagan Stevedore Company
- Brings significant marketing experience



Russian War on Ukraine & Seafarers

- Mixed Russian/Ukrainian Crews
- Crew Change for Ukrainians and Pay Issues
- 500 International Seafarers Trapped in the Black Sea Ports and the Sea Azov
- US ban on Russian-flagged and owned vessels



National Maritime Day Observances



- Observed annually on May 22nd
- Locally Observed on
 - May 13, 2022
 - Port Arthur International Seafarers' Center
 - 401 Houston Avenue, Port Arthur
 - 1100 hours w/ lunch to follow
 - Honor local mariners and maritime leaders who have recently passed away.

Texas National Maritime Day Gala

- Supports Camp Seaport & Port Arthur International Seafarers' Center
- Thursday, May 19, 2022
- Carl Parker Center – Lamar State College – Port Arthur

SETWAC Seafarers' Welfare Committee

Fr. Sinclair Oubre, J.C.L., AFNI

1500 Jefferson Drive

Port Arthur, Texas 77642

Phone: 409-749-0171

Email: Sinclair.Oubre@stellamarismail.org

Facebook: www.facebook.com/Stella-Maris-Diocese-of-Beaumont-107480633974106



Questions?

Thank You

COMMERCIAL FISHERMEN

Southeast Texas Waterway Advisory Committee

ALASKAN MARINE SAFETY EDUCATION ASSOCIATION DRILL CONDUCTOR CLASS

10 hour Coast Guard Approved Course

- Trained 85 Commercial Fishermen

- Navigation Training 60 Fishermen Attended

- Survey – Fishermen reported to having up to \$100,00 economic impact through avoidance of hazards and incidents when out on the water

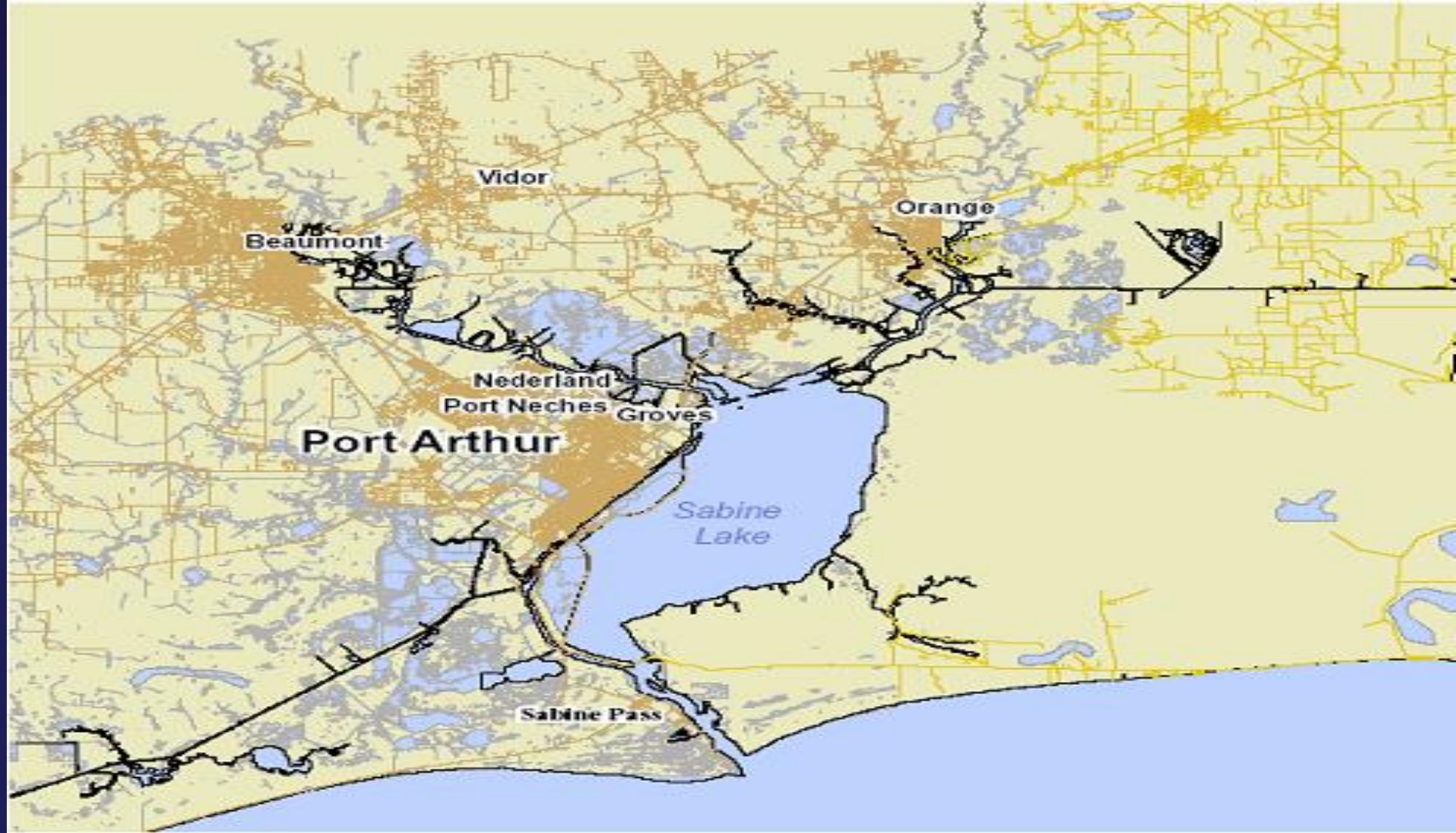
Topics Covered : navigation, man overboard, fire fighting, EPIRBs, Life Raft Training, vessel safety practices, signaling and flares, PFDs, Flooding and Damage Control, and In water practice session



UPCOMING FISHERIES MEETINGS

- July 6th – Hurricane Meeting
 - In Need of Speakers
- Working on Contacts List Coast Wide
- Held Meeting to talk about what Happens after storm and procedures fishermen need to do.





Waterway Maintenance and Improvement Subcommittee Report

Larry Fountain, Sabine-Neches Navigation District



Update on Deepening



Pipeline Update

Sabine-Neches Waterway

Operations and Maintenance Update

Timothy J. White, PE, PMP
Resident Engineer

Scott Sherman
Operations Manager

USACE – Galveston District

SETWAC Meeting
April 28, 2022



®

US Army Corps of Engineers
BUILDING STRONG®



Ongoing Contracts

Sabine-Neches Waterway



BUILDING STRONG®



SABINE-NECHES WATERWAY PLACEMENT AREA NO. 8 IMPROVEMENTS



Project:	Sabine-Neches Waterway Placement Area No. 8 Improvements
Type of Work:	Levee Improvements
Placement Area:	PA 8
Type of Equipment:	Excavators; Dozers; Marsh Buggy
Award	April 2021
Req. Completion	Dec 2021
Est. Completion	May 2022

Contractor: Oakhill Constructors



BUILDING STRONG®



SABINE-NECHES WATERWAY PA 11 Improvements



Project:	PA 11 Improvements
Type of Work:	Earth Work
Placement Area:	PA 11
Type of Equipment:	Excavators; Dozers; Marsh Buggy
Advertise	July 2021
Bid Opening	August 2021
Award	September 2021
Req Completion	August 2022
Est Completion	March 2022

Contractor: Affolter Contracting

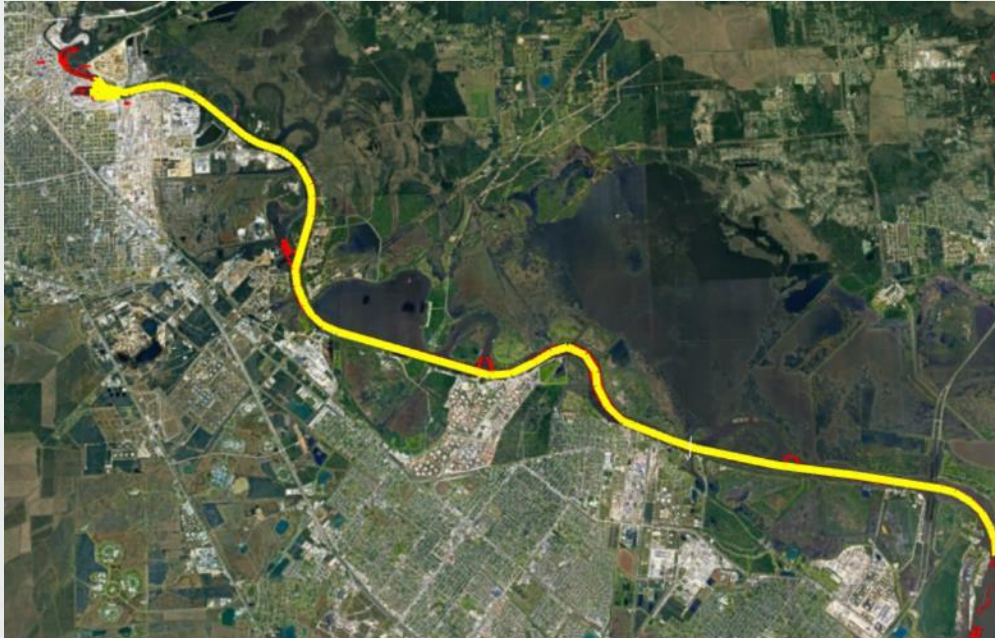


BUILDING STRONG®



SABINE-NECHES WATERWAY

Areas along the NECHES RIVER



Taylors Bayou Option completed.

USACE to examine additional options when FY22 funds are received.

Project:	Sabine-Neches Waterway SNWW Maintenance Dredging
Dredging Depth:	40ft. Authorized Depth
Dredging Quantity:	Est. 4 MCYs
Material Type:	MAINTENANCE
Dredge Type	Pipeline Dredge
Advertisement	July 2021
Bid Opening	August 2021
Award:	September 2021
Est. Completion	June 2022*

*Completion Time to be extended as
Options get awarded

Contractor: Orion Marine



BUILDING STRONG®



SABINE-NECHES WATERWAY ENTRANCE CHANNEL TO SABINE PASS DEEPENING



Project:	Sabine-Neches Waterway Outer Bar & Bank to Sabine Pass
Dredging Depth:	44 feet + Adv Maint
Dredging Quantity:	Est. 9 MCYs Federal Contract
Material Type:	NEW WORK
Placement Areas:	ODMDS 1 – 4 and A-D
Type of Equipment:	Hopper
Award:	Federal: September 2021 SNND: to follow
Req Completion	June 2023

 Federal Awarded Contract

Contractor: Dutra



BUILDING STRONG®

FY 2022

Future Dredging Contracts

Sabine-Neches Waterway



BUILDING STRONG®



SABINE-NECHES WATERWAY OUTER BAR & BANK



Project:	Sabine-Neches Waterway Outer Bar & Bank
Dredging Depth:	42ft. Authorized Depth
Dredging Quantity:	Est. 6 MCYs
Material Type:	MAINTENANCE
Dredge Type	Hopper Dredge
Advertisement	June 2022
Bid Opening	July 2022
Award:	August 2022
Est. Completion	January 2023



BUILDING STRONG®

**SABINE
TO GALVESTON
PORT ARTHUR
&
ORANGE**



BUILDING STRONG®



Orange County Coastal Storm Risk Management Project



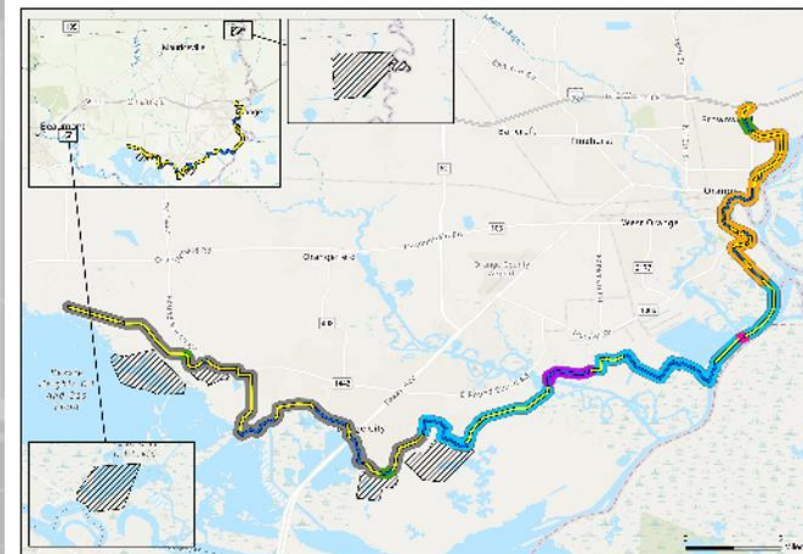
US Army Corps
of Engineers

A new levee/floodwall system:

The Orange County Coastal Storm Risk Management (CSRM) Project includes construction of a new levee/floodwall system to reduce storm surge damage caused by hurricane and tropical storm events that affect the southern half of Orange County along the Sabine River and Bessie Heights Marsh. The proposed project alignment follows the edge of the Sabine and Neches River floodplain from the City of Orange and ends West of Bessie Heights, measuring approximately 26.3 miles. This includes construction of 15.6 miles of levees, 10.7 miles of floodwalls, 7 pump stations, 56 internal drainage structures, 32 closure gates located at road and railway crossings, 2 navigable sector gates and 6 environmental mitigation areas.

Objectives:

The new CSRM Project is intended to reduce risk to human life and reduce economic damages to business, residents, and infrastructure from storm surge while ensuring no **additional** induced interior flooding.



Orange County
Coastal Storm Risk Management Project

Levee
Floodwall
Contract OC01
Contract OC02
Contract OC03
Contract OC04
Contract OC05
Contract OC06

Project Schedule:



Contract #	Scope	Contract #	Scope
OC01	Cow Bayou Complex – 84 ft Navigable Gate, Pump Station	OC04	7 Pump stations, tie ins, gates, drainage structures
OC02	2.4 miles floodwall, 3.0 miles levee, 18 gates, drainage structures	OC05	2.6 miles floodwall, 7.6 miles levee, 7 gates, drainage structures
OC02A	4.2 miles floodwall, 4.9 miles levee, 5 gates, drainage structures	OC06	6 Mitigation sites to compensate for impacts to forested wetlands and estuarine marsh
OC03	Adams Bayou Complex – 84 ft Navigable Gate, Pump Station		





Port Arthur and Vicinity Coastal Storm Risk Management Project



US Army Corps
of Engineers.

Reinforcement of an existing levee/floodwall system:

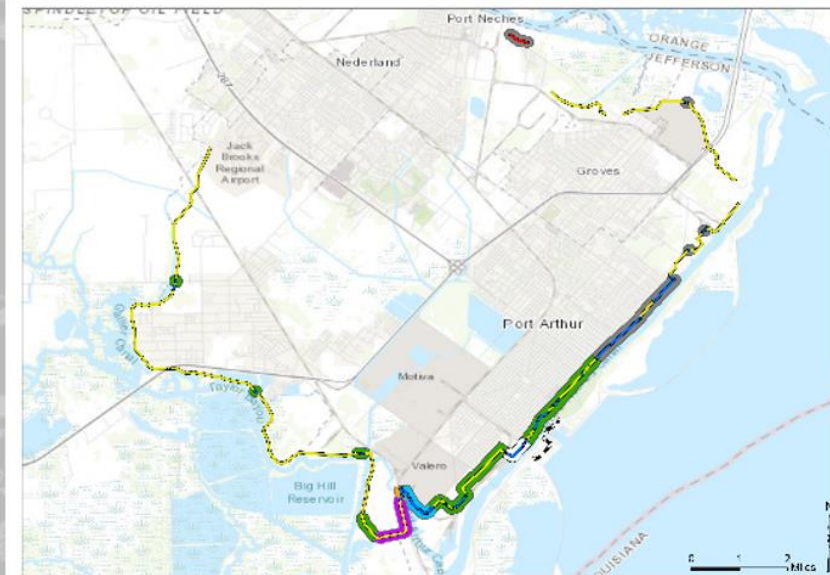
The Port Arthur and Vicinity Coastal Storm Risk Management (CSRM) Project in Jefferson County will result in improvements and additions to the existing Hurricane Flood Protection Project (HFPP). The plan includes raising approximately 5.5 miles of the existing 27.8 miles of earthen levee and constructing or reconstructing approximately 5.7 miles of floodwall. A separate 1,830 feet of new earthen levee will be constructed in the Port Neches area northwest of the existing northern terminus. Additionally, 26 vehicle closure structures will be replaced and erosion protections will be added.

Objectives:

The improved CSRM system is intended to increase the level of performance and resiliency of the existing Port Arthur and Vicinity HFPP.



Road closure gate



Port Arthur and Vicinity
Coastal Storm Risk Management Project

Project Schedule:



Contract #	Scope	Contract #	Scope
PAV01	1.1 miles levee raise	PAV03A	3.3 miles levee raise, 1.9 miles floodwall replacement, 1 gate
PAV02	0.2 miles floodwall replacement	PAV03B	0.02 miles levee raise, 0.5 miles floodwall replacement, 7 gates
PAV03	0.1 miles levee raise, 1.0 miles floodwall replacement, 11 gates	PAV04	0.4 miles levee raise, 0.4 miles new levee, 2.0 miles floodwall replacement, 3 gates



Taylors Bayou



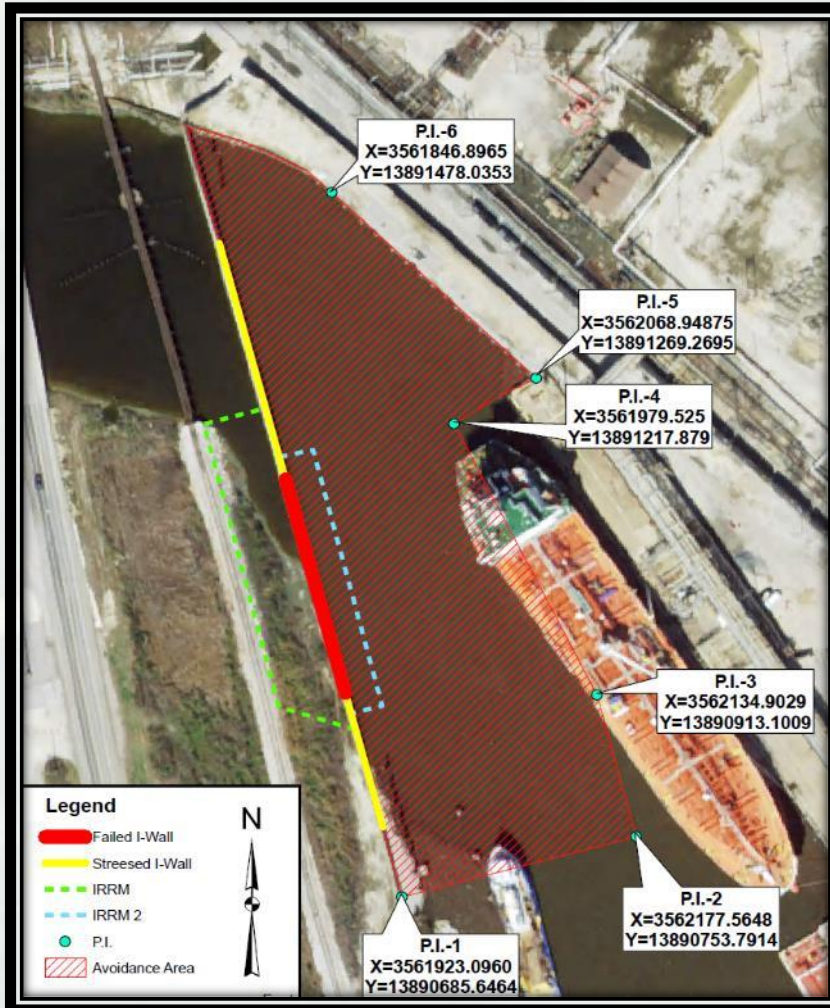
BUILDING STRONG®

TAYLORS BAYOU UPDATE



BUILDING STRONG®

Taylor's Bayou Current Restrictions

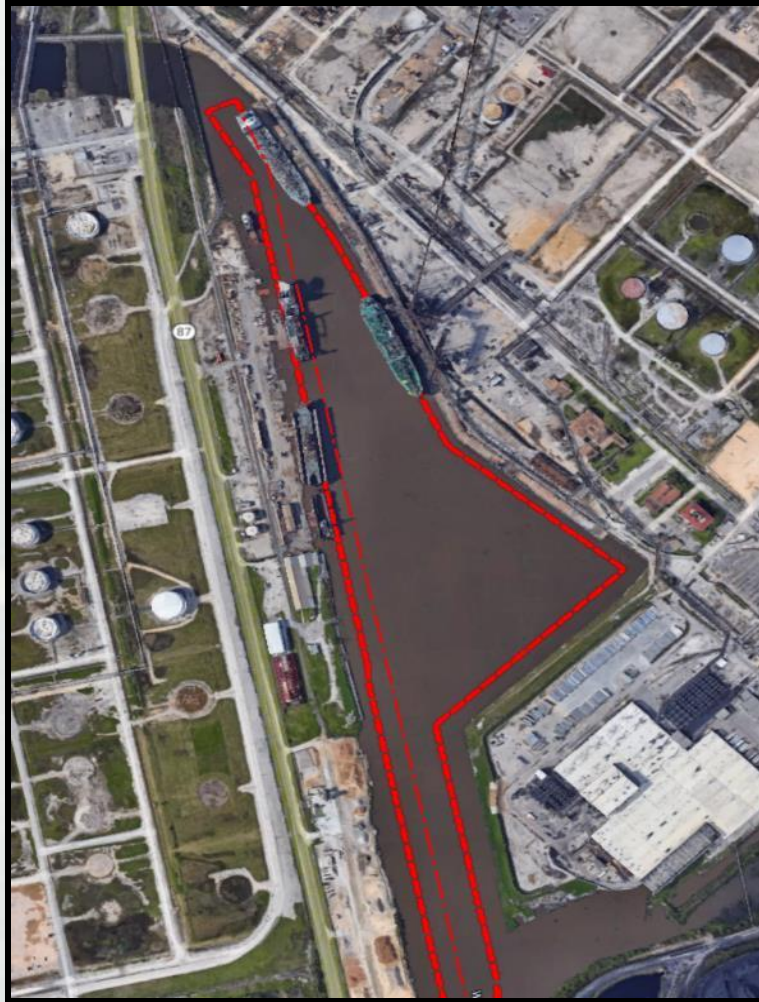


Current Status:

- Vessel Traffic Allowed in Hatched Area shown in Figure WITH LIMITATIONS put on tugs.
- Wall and temporary protection is being monitored by DD7 and USACE.



Taylor's Bayou Proposed Channel Improvement Changes



Current



Proposed

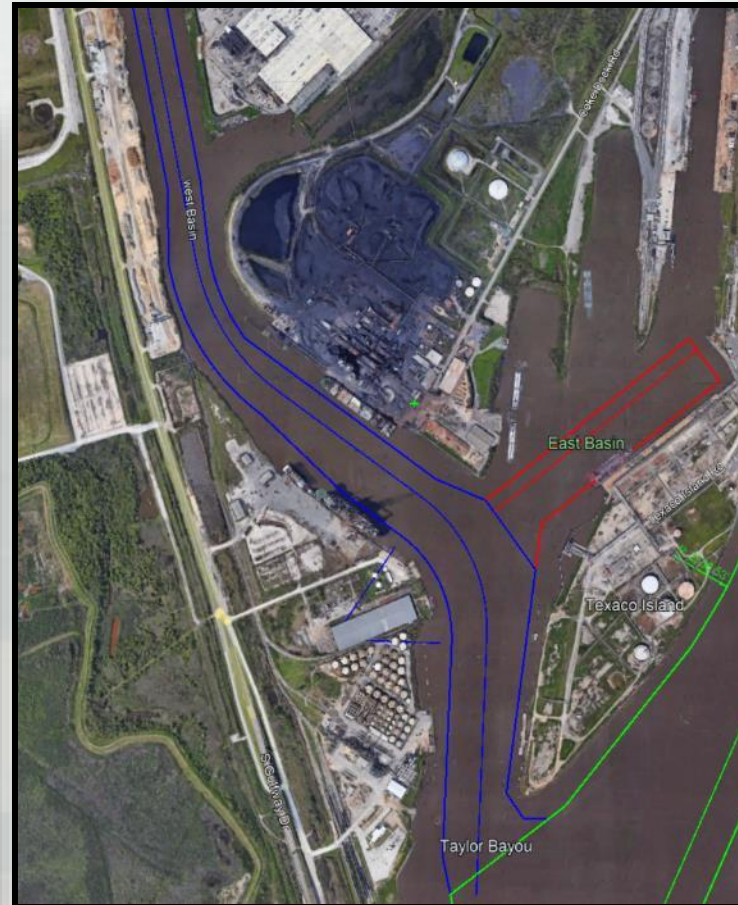


BUILDING STRONG®

Taylor's Bayou Proposed Channel Improvement Changes



Current

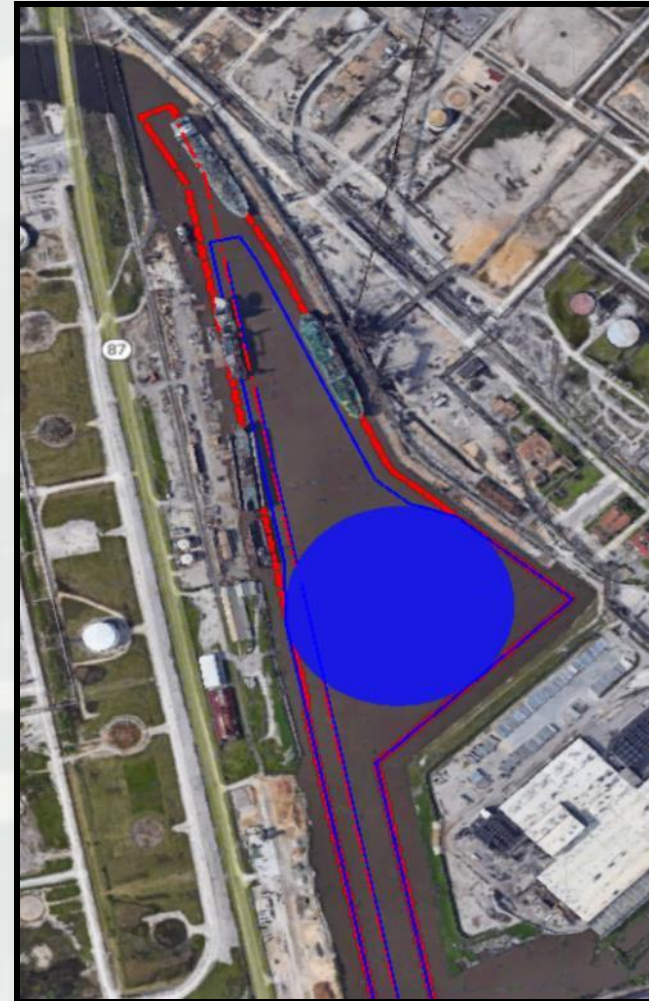


Proposed



BUILDING STRONG®

Taylor's Bayou Proposed Channel Improvement Changes



Overlay



BUILDING STRONG®

Questions?



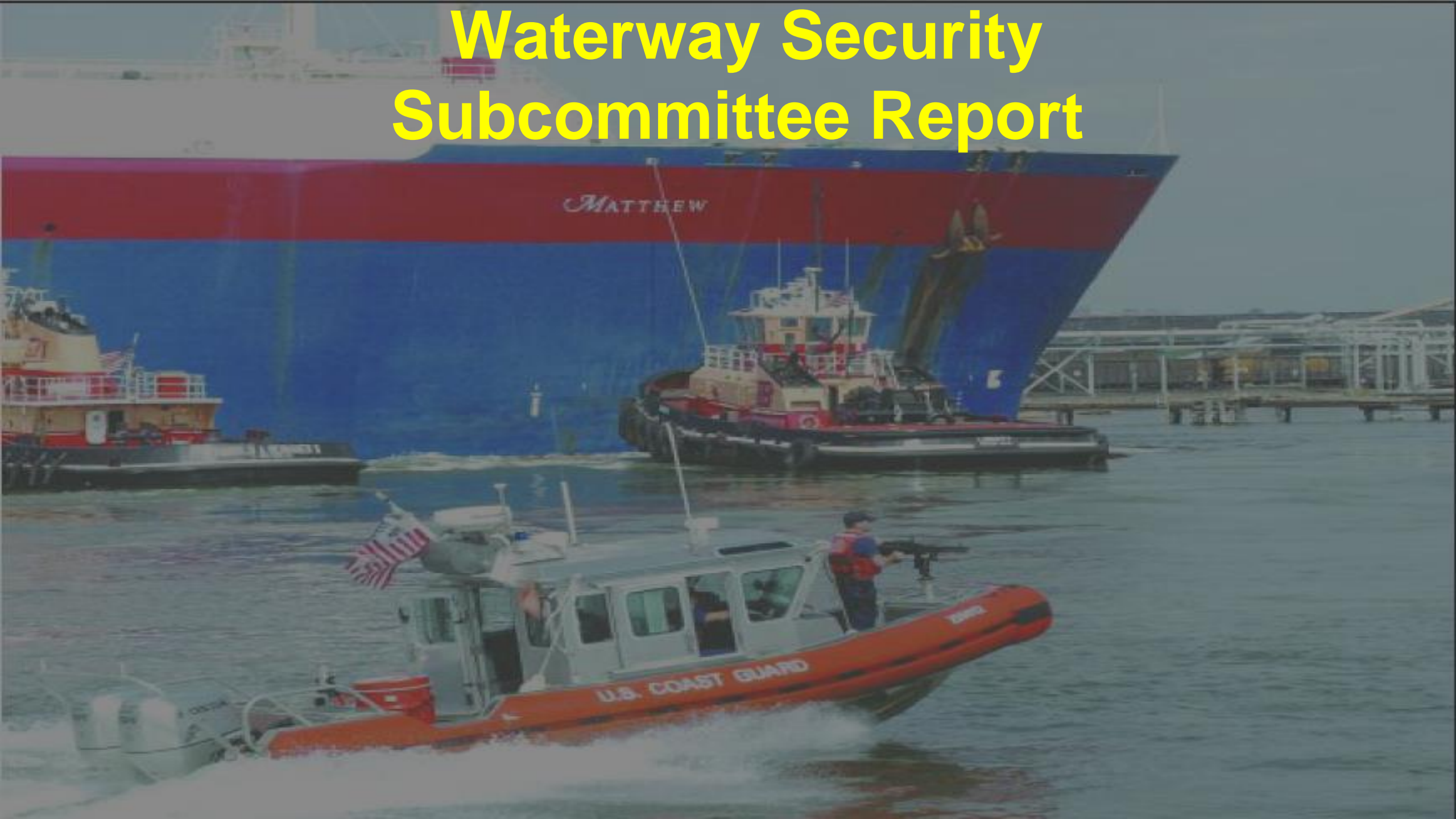
Scott Sherman
CESWG-ODN
409-937-5009
scott.d.sherman@usace.army.mil

Timothy J. White, P.E., PMP
CESWG-ECC-NP
409-985-2000 ext.1412
timothy.j.white@usace.army.mil



BUILDING STRONG®

Waterway Security Subcommittee Report





AMSC and Port Security Specialist Report

Jeremy.D.Hansen@uscg.mil

USCGC ANT Sabine

ATON REPORT



Current ATON Discrepancies



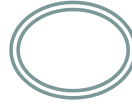
AID
Sabine Pass Alpha RRL- Destroyed
Sabine Pass Alpha RFL- Ext
Port Arthur Canal LT 40- Destroyed TRLB
Sabine-Neches Canal Lima RFL- Destroyed
Sabine-Neches Canal LT 66- Destroyed TRLB
Sabine-Neches Canal LT 74- Damaged TRLB
Sabine River DBN 21- Destroyed TRUB
Sabine River DBN 23- Destroyed TULB
Neches River LB 2- Off Station

Current ATON Discrepancies



AID
Neches River Light 7- Destroyed TRLB
Neches River Light 10- Damaged TRLB
Neches River Light 19- Destroyed TRLB
Neches River Light 34- Damaged TRLB
Neches River U RRL- Destroyed
Neches River Light 40A- Destroyed TRLB
Neches River Light 60- Damaged TRLB

QUESTIONS/COMMENTS ?





New Business

National Harbor Safety Committee Conference 2022



The Transportation Research Board and the Massachusetts Bay Harbor Safety Committee are excited to announce the 18th Biennial National Harbor Safety Committee Conference being held from June 13-15, 2022 at the Boston Park Plaza in Boston, Massachusetts. The national conference is held on a biennial basis and continues to be one of the premier gatherings of waterways stakeholders from the private sector, government agencies, and academia. This vital marine national transportation event is organized by the Transportation Research Board of the National Academies in partnership with the U.S. Coast Guard. The Massachusetts Bay Harbor Safety Committee is the lead host for the conference in 2022. Harbor Safety Committees (HSCs) are local committees of waterways stakeholders addressing issues that include the safety, security, mobility, and environmental protection of our ports and waterways. Membership is typically comprised of representatives from the local maritime industry and governmental agencies, as well as recreational boaters and the commercial fishing industry.

Topics to be covered within the conference include: federal waterways policy and regulatory issues, competing usage of harbors and waterways, automation and autonomous technologies, cyber and security issues, coastal resilience and port infrastructure, maritime training and workforce development, harbor safety committee best practices, lessons learned from the COVID-19 pandemic, and more.

This three-day event enables HSCs from all parts of the nation to come together on a national basis to share best practices, discuss policy and regulatory issues, highlight solutions, dialogue with government agencies, and form relationships that enable a robust transfer of ideas in between gatherings. The conference typically draws between 200-300 maritime professionals from throughout North America.

Gulf of Mexico – Outlook and Next Steps

Define Draft Wind Energy Areas-Early April

Conduct Environmental Assessment

Publish Proposed Sale Notice

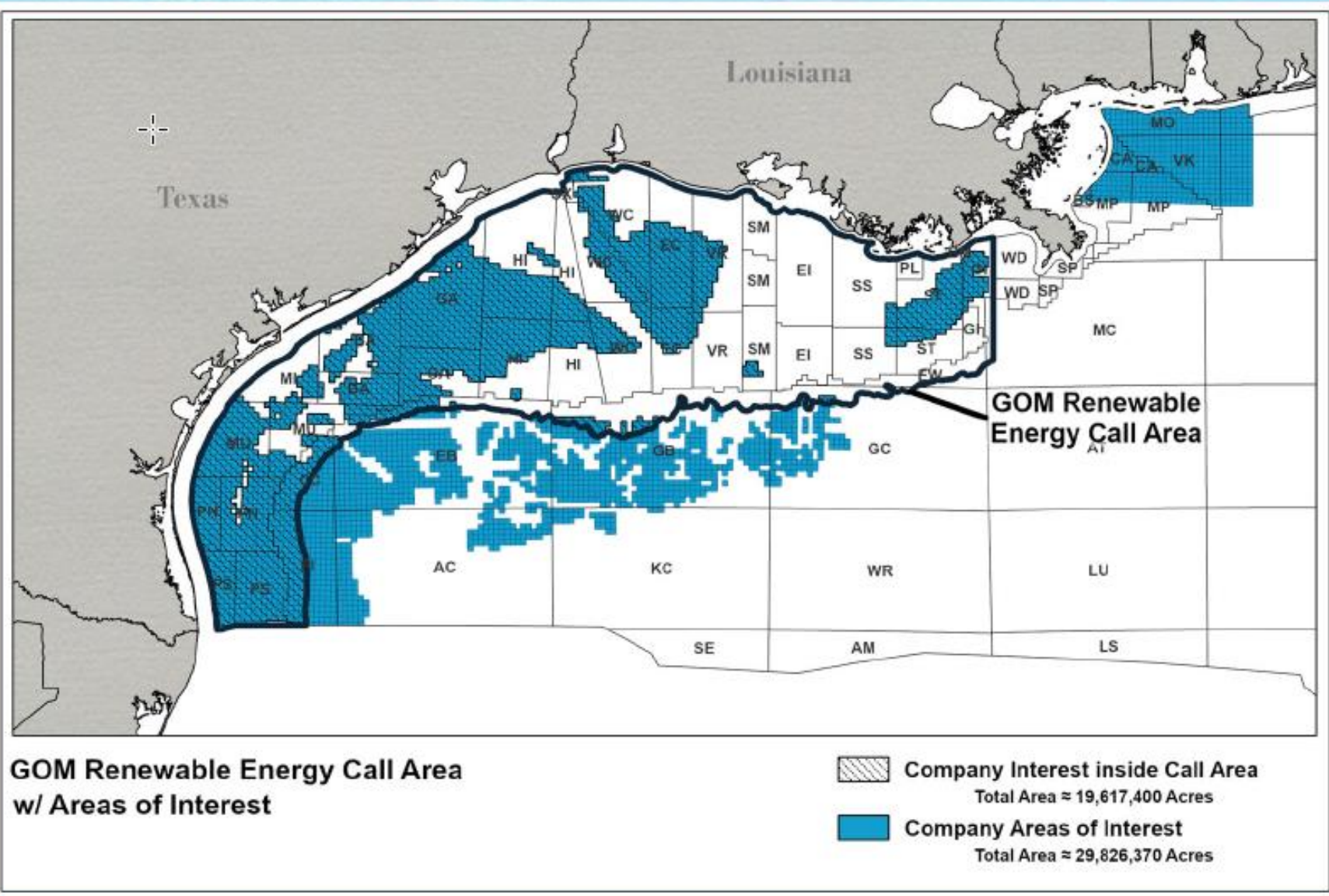
- 60-day comment period
- Last opportunity for developers to provide interest and submit qualifications to bid

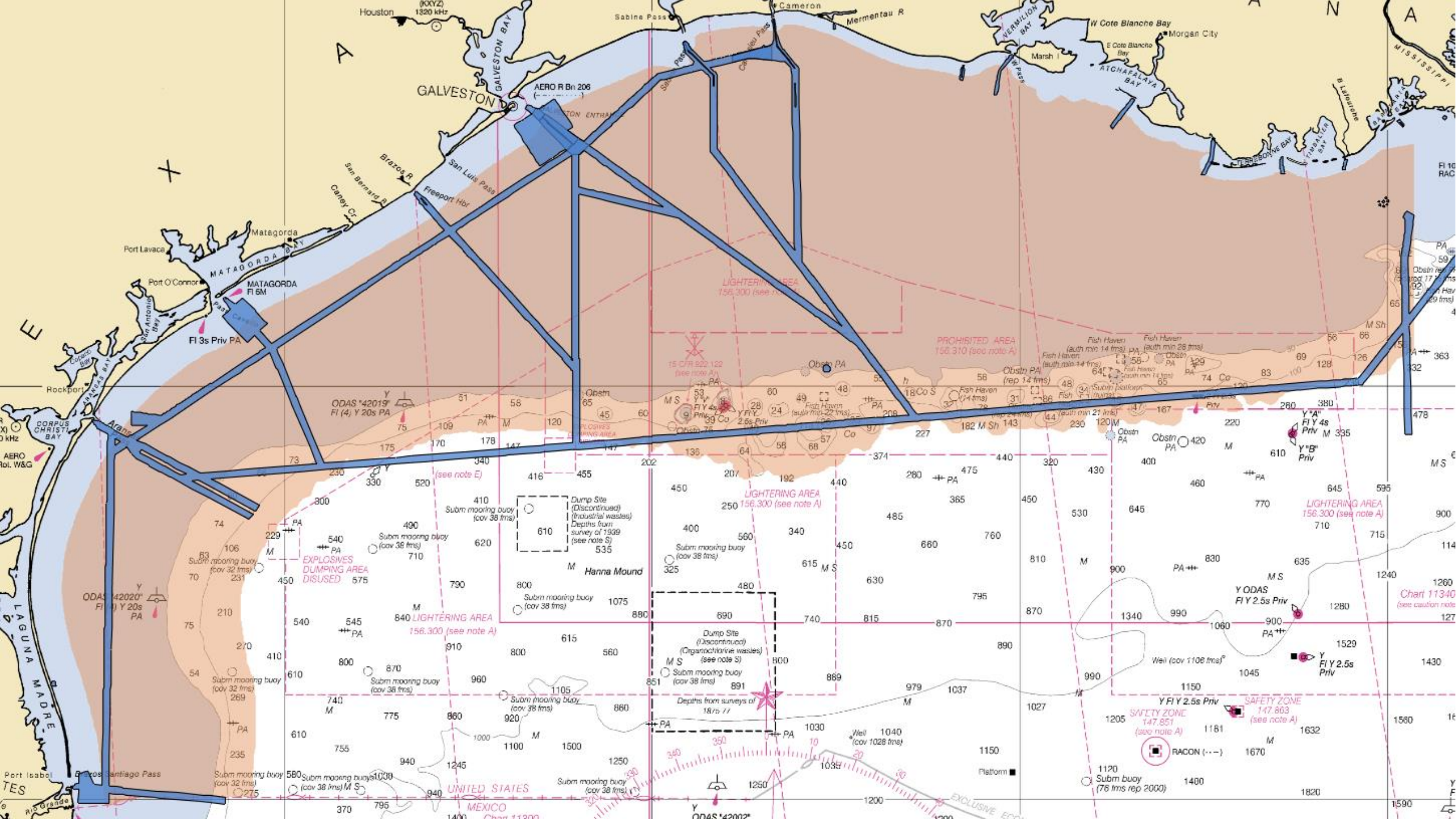
Publish Final Sale Notice

Lease Auction (Late 2022/Early 2023)



Companies' Areas of Interest





VTS/WATERWAYS CONTACTS



- Scott Whalen, Director VTS Port Arthur,
(409) 719-5086 scott.k.Whalen@uscg.mil
- Douglas Hendrix, Operation/Training Manager,
(409) 719-5083 douglas.g.hendrix2@uscg.mil
- Vessel Traffic Center, Watch Supervisor 24hrs
(409) 719-5070 msupportarthur-vtssup@uscg.mil
- VTS Webpage – <https://www.atlanticarea.uscg.mil/vtsportarthur/>
- Homeport Website – <http://homeport.uscg.mil>

Mark Your Calendars

Upcoming SETWAC Meetings



Working Group Meeting

Thursday, July 14, 2022

10:00 am

Sabine-Neches Navigation District Office

Full Committee Meeting

Thursday, July 28, 2022

10:00 am

MSU Port Arthur

