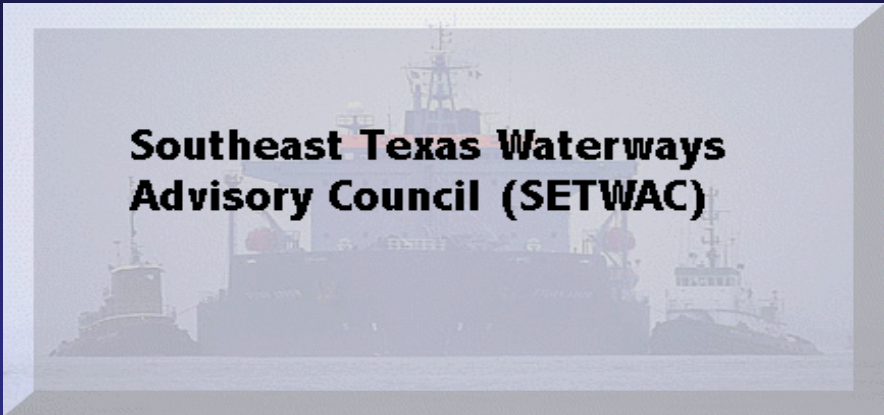




**Full Committee Meeting
28 October, 2021**



Southeast Texas Waterways Advisory Council

**October 28, 2021
Proposed Membership**

Chemical / Oil Refining Docks

Sean Marchant (P)	An initial 3-year term.	To commence October 29, 2021
--------------------------	--------------------------------	-------------------------------------

Navigation Subcommittee Report

Captain Charlie Tweedel, Sabine Pilots





Report on Near Miss Working Group Meeting



Report on Alpha Range



Education, Research and Workforce Development Subcommittee Report

Mr. Erik Stromberg, Lamar University



CENTER FOR
ADVANCES IN PORT MANAGEMENT
LAMAR UNIVERSITY

SETWAC FULL COUNCIL MEETING

**EDUCATION, RESEARCH AND WORKFORCE
DEVELOPMENT COMMITTEE**

OCTOBER 28, 2021

MEMBER THE TEXAS STATE UNIVERSITY SYSTEM™

Port and Supply Chain Management

General Studies Undergraduate Online Degree Program

Dr. Chris Clott, Visiting Professor

Fall 2022

1. Geography of Logistics
2. Supply Chain Management
3. Analysis of Logistic Systems
4. Port and Terminal Management

Continuing Education—2021/22 Webinars

- Cyber Security—Key current issues including NVIC Update
- SNNW Channel Improvement Project--Preparing for Increased Traffic and Economic Development
- Digitalization Technologies Facilitating Cargo Movement and Handling in SE Texas
- Economic Development Strategies—Focus on rail-based, port-centric projects
- Primer on Economic Impact Assessments
- Strategic Asset Management – Practical Applications

Workforce Development

- Pathway program – increasing awareness and understanding of port and maritime industries from K-12, to two- and four-year colleges, to advanced degree programs
- AAPA/USDOL coordination
- Southeast Texas Transportation Week April 2022

2021 CAPM Sponsored Research at Lamar

- Increasing Resiliency and Safety of Waterways and Ports: A Novel Approach Based on Drone and Artificial Intelligence
- Vulnerability Assessment and Resilience of Port Systems Under Extreme Weather Conditions
- Establishing a Solution to the Problem of Managing Dredge Waste
- Resilience Study for Port-related Refinery Supply Chain Management
- Use of Autonomous Vehicles to Improve Resiliency and Safety of Freight Transportation in Southeast Texas
- Advanced Wetting Dynamics Study: Understanding the Fundamental Physics of Anti-fouling, Anti-Corrosion and Friction Reduction

Conclusion and Request

- Workforce development subcommittee successfully recruiting ISD and two-year colleges as well as SETWAC members. Contact: Sade Chick (sc@pobtx.com; 409-835-5367).
- Education and research committee needs SETWAC engagement! Contact: Erik Stromberg (rstromberg@lamar.edu; 409-880-7121; 910-617-6800)

SETWAC

Seafarer Welfare Committee

Port Arthur, Texas

October 28, 2021

Items for consideration:

- Vaccination of Seafarers while in the Sabine-Neches Waterway – Doreen Badeaux
- President Biden's *Proclamation on Advancing the Safe Resumption of Global Travel During the COVID-19 Pandemic* – Impact on Crew Change
- Delays at facility gates
- Lamar State College – Orange Maritime Program
- National – Merchant Marine Personnel Advisory Committee

Vaccination of Seafarers while in the Sabine-Neches Waterway

Doreen Badeaux

Provisions for Seafarers in President Biden's *Proclamation on Advancing the Safe Resumption of Global Travel During the COVID- 19 Pandemic*

Section 3, (IX) any noncitizen seeking entry as a sea crew member traveling pursuant to a C-1 and D nonimmigrant visa, if such crew member adheres to all industry standard protocols for the prevention of COVID-19, as set forth in relevant guidance for crew member health by the CDC;

(<https://www.whitehouse.gov/briefing-room/presidential-actions/2021/10/25/a-proclamation-on-advancing-the-safe-resumption-of-global-travel-during-the-covid-19-pandemic/>)

FAQ's Sheet re: Provisions for Seafarers in President Biden's *Proclamation on Advancing the Safe Resumption of Global Travel During the COVID-19 Pandemic*

Limited Exceptions from the Vaccination Requirement:

- There are a very limited set of exceptions from the vaccination requirement for foreign nationals. These include exceptions for children under 18, certain COVID-19 vaccine clinical trial participants, those with medical contraindications to the vaccines, those who need to travel for emergency or humanitarian reasons (with a US government-issued letter affirming the urgent need to travel), ***those who are traveling on non-tourist visas from countries with low-vaccine availability (as determined by the CDC), and other very narrow categories.***
- Those who receive an exception will generally be required to attest they will comply with applicable public health requirements, including, with very limited exceptions, a requirement that they be vaccinated in the U.S. if they intend to stay here for more than 60 days.

(<https://www.whitehouse.gov/briefing-room/statements-releases/2021/10/25/fact-sheet-biden-administration-releases-additional-detail-for-implementing-a-safer-more-stringent-international-air-travel-system/>)

Access to Facilities & 2020 Seafarers Access Regulations

Fr. Sinclair Oubre

Lamar State College – Orange Maritime Program

Fr. Sinclair Oubre

National Merchant Marine Personnel Advisory Committee Public Representative

Fr. Sinclair Oubre, AFNI

Fall meeting: November 16-18, 2021

Harry Lundeberg School of Seamanship – Piney Point, Maryland

SETWAC Seafarers' Welfare Committee

Fr. Sinclair Oubre, J.C.L., AFNI

1500 Jefferson Drive

Port Arthur, Texas 77642

Phone: 409-749-0171

Email: Sinclair.Oubre@stellamarismail.org

Facebook: www.facebook.com/Stella-Maris-Diocese-of-Beaumont-107480633974106



Questions?

Thank You



Commercial Fisheries

Nikki Fitzgerald



Report on Fishery Meeting



Update on Safety Course



Derelict Fishing Vessels



Waterway Maintenance and Improvement Subcommittee Report

Larry Fountain, Sabine-Neches Navigation District



Update on Deepening

Sabine-Neches Waterway

Operations and Maintenance Update

Timothy J. White, PE, PMP
Resident Engineer

Belynda Kinman
Operations Manager

USACE – Galveston District

SETWAC Meeting
October 28, 2021



®

US Army Corps of Engineers
BUILDING STRONG®



Ongoing Contracts

Sabine-Neches Waterway



BUILDING STRONG®



SABINE-NECHES WATERWAY PLACEMENT AREA NO. 8 IMPROVEMENTS



Project:	Sabine-Neches Waterway Placement Area No. 8 Improvements
Type of Work:	Levee Improvements
Placement Area:	PA 8
Type of Equipment:	Excavators; Dozers; Marsh Buggy
Award	April 2021
Est Completion	Dec 2021

Contractor: Oakhill Constructors



BUILDING STRONG®



SABINE-NECHES WATERWAY PA 11 Improvements



Project:	PA 11 Improvements
Type of Work:	Earth Work
Placement Area:	PA 11
Type of Equipment:	Excavators; Dozers; Marsh Buggy
Advertise	July 2021
Bid Opening	August 2021
Award	September 2021
Est Completion	August 2022

Contractor: Affolter Contracting



BUILDING STRONG®



SABINE-NECHES WATERWAY

Areas along the NECHES RIVER



Port Arthur Junction and Taylors Bayou are also included in the contract.

Options to be awarded when USACE gets FY22 funds

Project:	Sabine-Neches Waterway Placement Area No. 8 Improvements
Dredging Depth:	40ft. Authorized Depth
Dredging Quantity:	Est. 4 MCYs
Material Type:	MAINTENANCE
Dredge Type	Pipeline Dredge
Advertisement	July 2021
Bid Opening	August 2021
Award:	September 2021
Est. Completion	May 2022*

*Completion Time to be extended as
Options get awarded

Contractor: Orion Marine



BUILDING STRONG®



SABINE-NECHES WATERWAY ENTRANCE CHANNEL TO SABINE PASS DEEPENING



Project:	Sabine-Neches Waterway Outer Bar & Bank to Sabine Pass
Dredging Depth:	44 feet + Adv Maint
Dredging Quantity:	Est. 9 MCYs Federal Contract
Material Type:	NEW WORK
Placement Areas:	ODMDS 1 – 4 and A-D
Type of Equipment:	Hopper
Award:	Federal: September 2021 SNND: to follow
Est Completion	June 2023

 Federal Awarded Contract

Contractor: Dutra



BUILDING STRONG®

FY 2022

Future Dredging Contracts

Sabine-Neches Waterway



BUILDING STRONG®



SABINE-NECHES WATERWAY OUTER BAR & BANK



Project:	Sabine-Neches Waterway Outer Bar & Bank
Dredging Depth:	42ft. Authorized Depth
Dredging Quantity:	Est. 2 MCYs
Material Type:	MAINTENANCE
Dredge Type	Hopper Dredge
Advertisement	April 2022
Bid Opening	May 2022
Award:	June 2022
Est. Completion	November 2022



BUILDING STRONG®

**SABINE
TO GALVESTON
PORT ARTHUR
&
ORANGE**



BUILDING STRONG®



Orange County Coastal Storm Risk Management Project



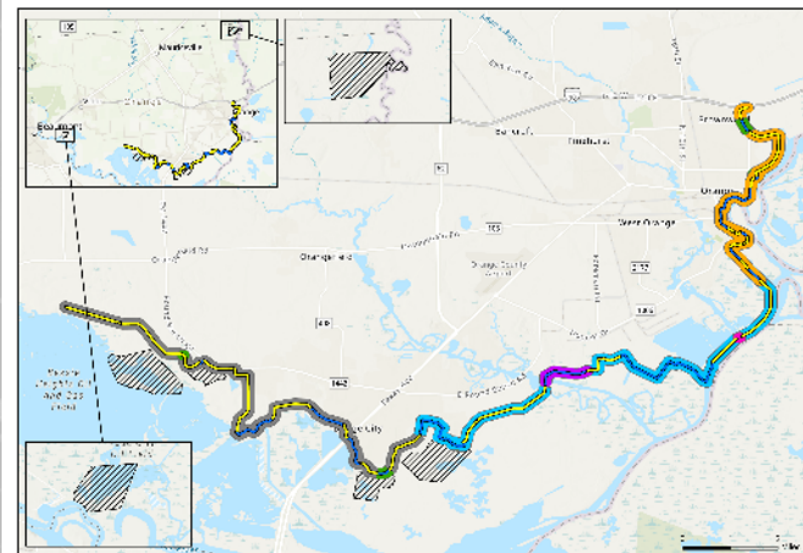
US Army Corps
of Engineers

A new levee/floodwall system:

The Orange County Coastal Storm Risk Management (CSRM) Project includes construction of a new levee/floodwall system to reduce storm surge damage caused by hurricane and tropical storm events that affect the southern half of Orange County along the Sabine River and Bessie Heights Marsh. The proposed project alignment follows the edge of the Sabine and Neches River floodplain from the City of Orange and ends West of Bessie Heights, measuring approximately 26.3 miles. This includes construction of 15.6 miles of levees, 10.7 miles of floodwalls, 7 pump stations, 56 internal drainage structures, 32 closure gates located at road and railway crossings, 2 navigable sector gates and 6 environmental mitigation areas.

Objectives:

The new CSRM Project is intended to reduce risk to human life and reduce economic damages to business, residents, and infrastructure from storm surge while ensuring no **additional** induced interior flooding.



Orange County
Coastal Storm Risk Management Project

Levee Contract OC012 Contract OC04
Floodwall Contract OC020 Contract OC05
Gate Contract OC01 Contract OC03 Contract OC06

Project Schedule:



Contract #	Scope	Contract #	Scope
OC01	Cow Bayou Complex – 84 ft Navigable Gate, Pump Station	OC04	7 Pump stations, tie ins, gates, drainage structures
OC02	2.4 miles floodwall, 3.0 miles levee, 18 gates, drainage structures	OC05	2.6 miles floodwall, 7.6 miles levee, 7 gates, drainage structures
OC02A	4.2 miles floodwall, 4.9 miles levee, 5 gates, drainage structures	OC06	6 Mitigation sites to compensate for impacts to forested wetlands and estuarine marsh
OC03	Adams Bayou Complex – 84 ft Navigable Gate, Pump Station		



BUILDING STRONG®



Port Arthur and Vicinity Coastal Storm Risk Management Project



US Army Corps
of Engineers.

Reinforcement of an existing levee/floodwall system:

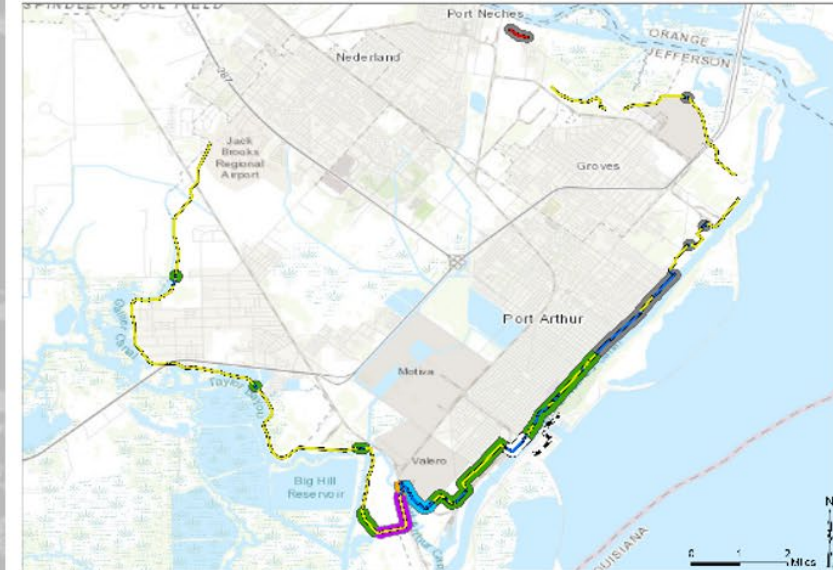
The Port Arthur and Vicinity Coastal Storm Risk Management (CSRM) Project in Jefferson County will result in improvements and additions to the existing Hurricane Flood Protection Project (HFPP). The plan includes raising approximately 5.5 miles of the existing 27.8 miles of earthen levee and constructing or reconstructing approximately 5.7 miles of floodwall. A separate 1,830 feet of new earthen levee will be constructed in the Port Neches area northwest of the existing northern terminus. Additionally, 26 vehicle closure structures will be replaced and erosion protections will be added.

Objectives:

The improved CSRM system is intended to increase the level of performance and resiliency of the existing Port Arthur and Vicinity HFPP.



Road closure gate



Port Arthur and Vicinity
Coastal Storm Risk Management Project

Project Schedule:

Q1 FY19

Design

PPA Signed
29 Nov 2019

Q2 FY20

Construction

Q1 FY27

Contract #	Scope	Contract #	Scope
PAV01	1.1 miles levee raise	PAV03A	3.3 miles levee raise, 1.9 miles floodwall replacement, 1 gate
PAV02	0.2 miles floodwall replacement	PAV03B	0.02 miles levee raise, 0.5 miles floodwall replacement, 7 gates
PAV03	0.1 miles levee raise, 1.0 miles floodwall replacement, 11 gates	PAV04	0.4 miles levee raise, 0.4 miles new levee, 2.0 miles floodwall replacement, 3 gates



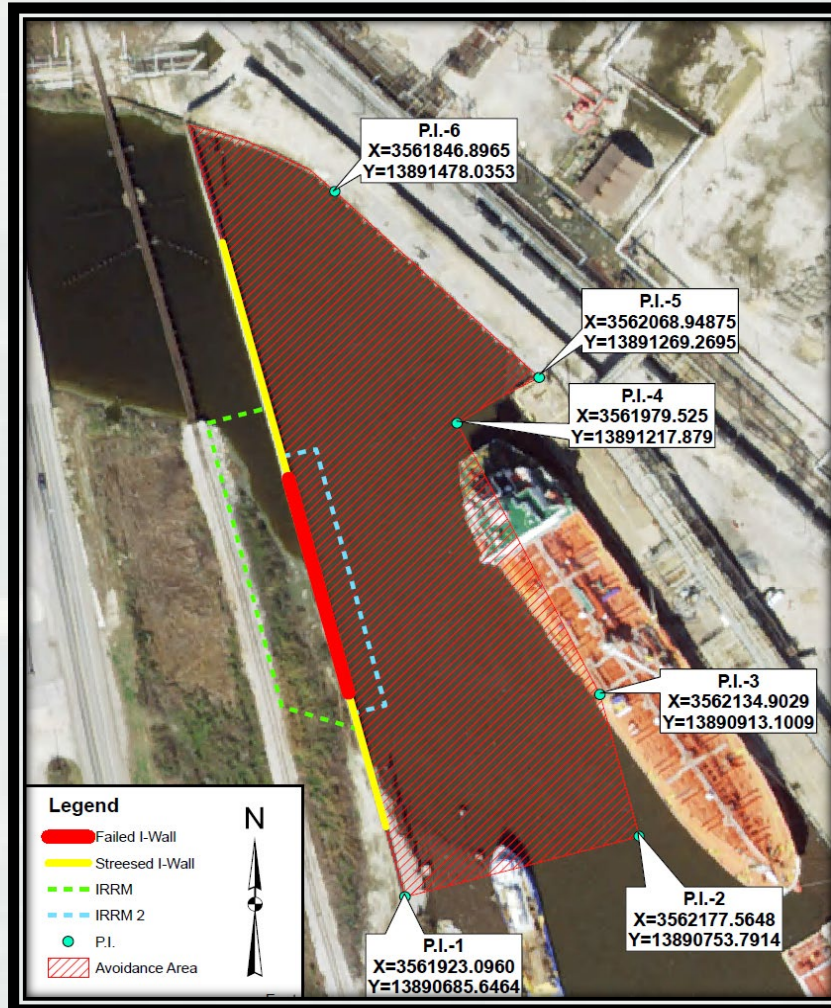
BUILDING STRONG®

TAYLORS BAYOU UPDATE



BUILDING STRONG®

Taylors Bayou Current Restrictions



Current Status:

- Vessel Traffic Allowed in Hatched Area shown in Figure WITH LIMITATIONS put on tugs.
- Wall and temporary protection is being monitored by DD7 and USACE.



Questions?



Belynda Kinman
CESWG-ODN
409-766-6323

Belynda.M.Kinman@usace.army.mil

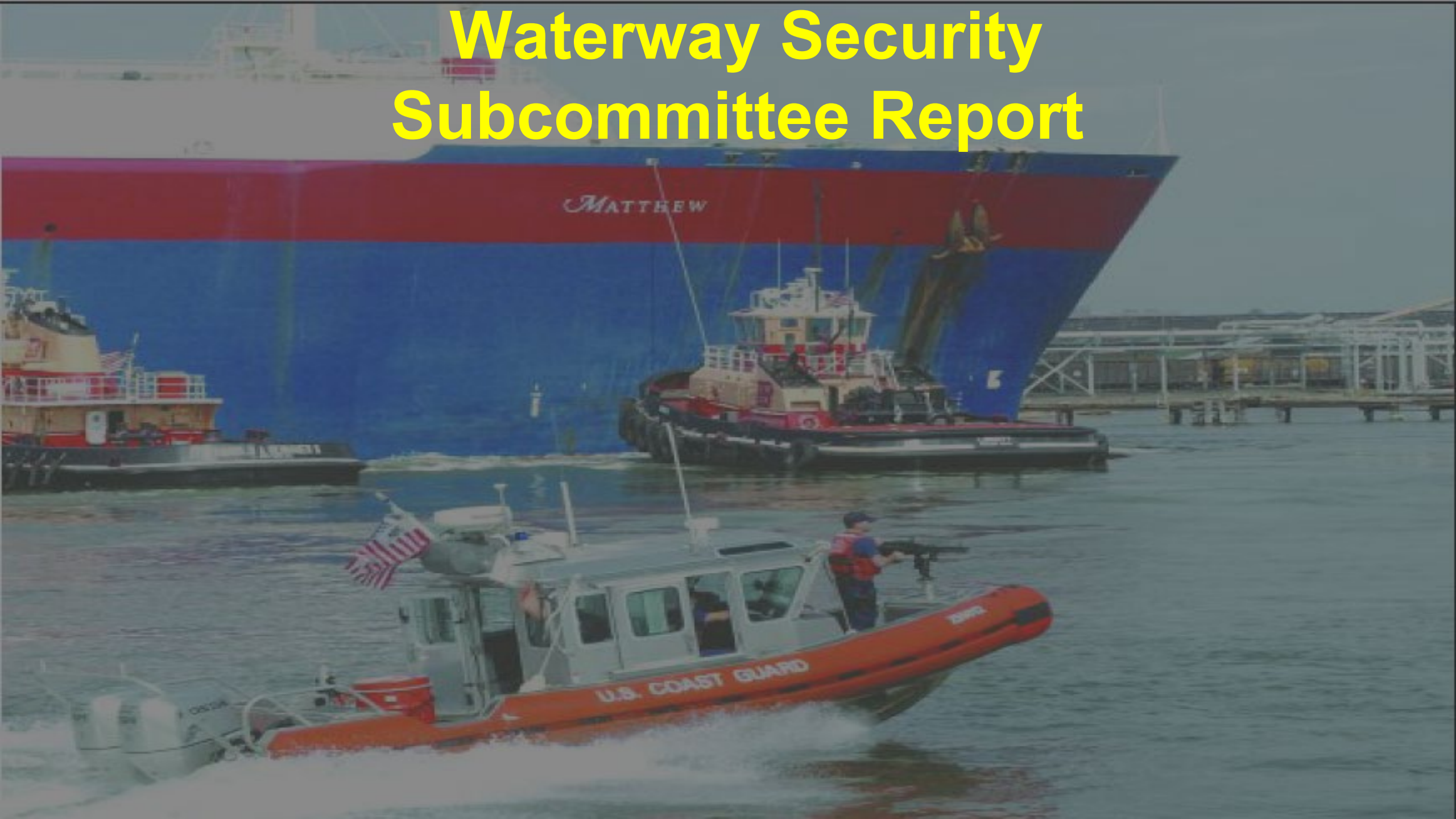
Timothy J. White, P.E., PMP
CESWG-ECC-NP
409-985-2000 ext.1412

timothy.j.white@usace.army.mil



BUILDING STRONG®

Waterway Security Subcommittee Report





AMSC and Port Security Specialist Report

Jeremy.D.Hansen@uscg.mil

USCGC ANT Sabine

ATON REPORT

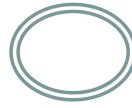


Current ATON Discrepancies



AID
Sabine Pass Alpha RRL- Destroyed
Sabine-Neches Canal Light 60- Destroyed TRLB
Sabine-Neches Canal Light 62- Destroyed TRLB
Sabine-Neches Canal Light 74- Destroyed TRLB
Neches River Light 34- Destroyed TRLB
Neches River U RRL- Destroyed
Sabine River DBN 23- Destroyed TRUB

QUESTIONS/COMMENTS ?





New Business

Waterway Activities



Memorandum of Understanding LNG Bunkering

Mr. Larry Kelley, Port of Port Arthur

VTS/WATERWAYS CONTACTS



- Scott Whalen, Director VTS Port Arthur,
(409) 719-5086 scott.k.Whalen@uscg.mil
- Douglas Hendrix, Operation/Training Manager,
(409) 719-5083 douglas.g.hendrix2@uscg.mil
- Vessel Traffic Center, Watch Supervisor 24hrs
(409) 719-5070 msuportarthur-vtssup@uscg.mil
- VTS Webpage – <https://www.atlanticarea.uscg.mil/vtsportarthur/>
- Homeport Website – <http://homeport.uscg.mil>

Mark Your Calendars

Upcoming SETWAC Meetings



Working Group Meeting

Thursday, January 13, 2022

10:00 am

Sabine-Neches Navigation District Office

Full Committee Meeting

Thursday, January 27, 2022

10:00 am

MSU Port Arthur

