

GALVESTON DISTRICT Navigation Restoration Following Hurricane Event

Port Arthur Resident Office
Galveston District
U.S. Army Corps of Engineers
2 JUNE 2022

"The views, opinions and findings contained in this report are those of the authors(s) and should not be construed as an official Department of the Army position, policy or decision, unless so designated by other official documentation."



**US Army Corps
of Engineers.**



ROLL CALL

Texas – Navigation Restoration Team



US Army Corps
of Engineers.





Galveston District Staff

3

Erin Diurba

Hydrographic Survey Coordinator, North

erin.s.diurba@usace.army.mil

(409) 795-0524

Timothy J. White, P.E., PMP

Resident Engineer, Port Arthur Resident Office

Timothy.j.white@usace.army.mil

(409) 985-2000 X-1412

Jennifer Galindo

Hydrographic Surveyor, Port Arthur Resident Office

Jennifer.A.Galindo@usace.army.mil

(409) 985-2000 X-1422



US Army Corps
of Engineers.



GALVESTON DISTRICT CONTRACTING MECHANISMS

Hopper Dredge Multi-Award Task Order Contract (MATOC)

- Ready for Use
- 4-year Contract; Awarded Sept 2019
- Un-Restricted Contractor Pool

Pipeline Dredge MATOC

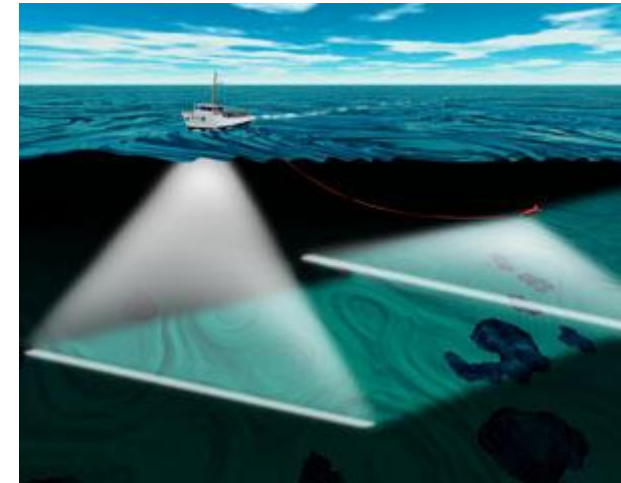
- Ready for Use
- 4-year Contract; Awarded April 2020
- Un-restricted Contractor Pool
- Small Business Contractor Pool



US Army Corps
of Engineers.



<https://www.swg.usace.army.mil/Missions/Navigation/Hydrographic-Surveys/>



REPORTING CHANNEL CONDITIONS

USACE Enterprise Software *eHydro*

<https://www.swg.usace.army.mil/Missions/Navigation/Hydrographic-Surveys/>



Media ▾ Business With Us ▾ Missions ▾ About ▾ Locations ▾ Careers ▾ Library ▾ Contact ▾ Coronavirus

Search Galveston District Website

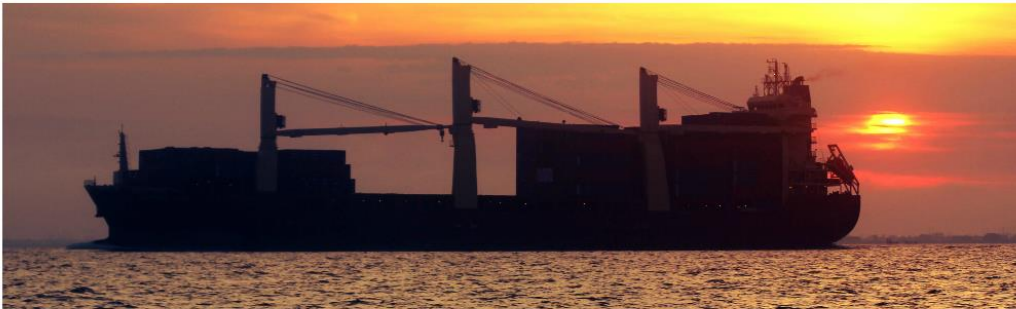
US Army Corps of Engineers Galveston District Website

[Home](#) / [Missions](#) / [Navigation](#) / Hydrographic Surveys

Channel Condition Reporting with eHydro

HYDROGRAPHIC SURVEY BRIEF

The U.S. Army Corps of Engineers' navigation mission is to provide safe, reliable, efficient, and environmentally sustainable waterborne transportation systems (channels, harbors, and waterways) for movement of commerce, national security, and recreation. The mission of the Galveston District Navigation Branch is to manage federal Navigation Projects along the Texas coastal region. The Galveston district hydrographic survey webpage provides the latest hydrographic survey products and raw survey data for download.



SURVEY MAPS

The information depicted on these survey maps represent the results of surveys made on the dates indicated and can only be considered as indicating the general conditions existing at that time. These conditions are subject to rapid change due to shoaling events. A prudent mariner should not rely exclusively on the information required here. Required by 33 CFR 209.325

EHYDRO

The U.S. Army Corps of Engineers developed eHydro to provide enterprise performance-based analyses and budgeting for coastal navigation channels through geospatial data to be used for, uniform method of data dissemination and comparison of latest conditions on coastal navigation channels. The Galveston district processes and reports channel condition data through

Hydrographic Surveys

[SABINE NECHES WATERWAY](#)
[HOUSTON - GALVESTON - TX C](#)
[HOUSTON SHIP CHANNEL TRIB](#)
[FREEPORT & BRAZOS HARBOR](#)
[MATAGORDA & PORT LAVACA](#)
[CORPUS CHRISTI SHIP CHANNEL](#)
[BRAZOS ISLAND HARBOR & PC](#)
[GIWW - NORTH](#)
[GIWW - SOUTH](#)
[GIWW - TRIBUTARIES](#)

National Channel Framework

The [National Channel Framework \(NCF\)](#) is an enterprise Geographic Information System (eGIS) database providing information about congressionally authorized navigation channels maintained by USACE. Channel alignments and hydrographic survey data consumed by NOAA for update of their Electronic Nautical Charts.



REPORTING CHANNEL CONDITIONS

USACE Enterprise Software *eHydro*

<https://www.swg.usace.army.mil/Missions/Navigation/Hydrographic-Surveys/>



Media ▾ Business With Us ▾ Missions ▾ About ▾ Locations ▾ Careers ▾ Library ▾ Contact ▾ Coronavirus

Search Galveston Dis

US Army Corps of Engineers Galveston District Website Website

[Home](#) / [Missions](#) / [Navigation](#) / [Hydrographic Surveys](#) / Galveston Texas City Houston

Galveston Harbor Index & Maps



PAGES	CHANNEL	Station to Station	Survey Date(s)	PDF Map	XYZ Data
1 - 3	Extended Entrance Channel	76+000 to 55+840.58	02/27/20	Survey Map	XYZ
4 - 7	Entrance Channel	55+840.58 to 30+515.474	02/27,28/20	Survey Map	XYZ
8 - 9	Outer Bar Channel	30+515.474 to 21+752.821	02/28/20	Survey Map	XYZ
10 - 12	Inner Bar Channel	21+752.821 to 4+490.072	03/02/20	Survey Map	XYZ
13	Bolivar Roads Channel	4+490.12 to 0+000	03/02/20	Survey Map	XYZ
14	Bolivar Roads to Exxon Oil Dock	0+000 to 7+879.53	03/04/20	Survey Map	XYZ
15	Exxon Oil Dock to Todd Shipyards	7+879.53 to 15+600	03/04/20; 04/29/20	Survey Map	XYZ
16	Todd Shipyards to Pier B (43rd Street)	15+600 to 22+571	03/05/20; 04/29/20	Survey Map	XYZ
17	Anchorage Basin "A"	23+200 to 12+200	05/01/19	Survey Map	XYZ
18	Anchorage Basin "B"	14+118.08 to 4+490.12	08/20/19	Survey Map	XYZ

OPERATIONS GIS DASHBOARD

<https://www.swg.usace.army.mil/Missions/Navigation/Navigation-Projects-Contracts/>



[Media](#) ▾ [Business With Us](#) ▾ [Missions](#) ▾ [About](#) ▾ [Locations](#) ▾ [Careers](#) ▾ [Library](#) ▾ [Contact](#) ▾ [Coronavirus](#)

Search Galveston I

US Army Corps of Engineers Galveston District Website Website

[Home](#) / [Missions](#) / [Navigation](#) / Navigation Projects & Contracts

Operations Dashboard



Contact Us

Galveston District Operations Division

Mailing Address:

USACE Galveston District
P.O. Box 1229
Galveston, TX 77553-1229
Phone: 409-766-3973



US Army Corps
of Engineers.



OPERATIONS GIS DASHBOARD

<https://www.swg.usace.army.mil/Missions/Navigation/Navigation-Projects-Contracts/>



CESWG Operations Navigation Dashboard

DCPDS Portal - Login
<https://compd.dcpds.cpmis.osd.mil/>

Contract Award Status

Filter by Award Status

Active Construction:

Project Type:

Filter by Project Type

Contracts

114

Last update: a minute ago

- #1 - FY16 : Channel to Victoria - Maint Pipeline Dredging
- #2 - FY17 : Gulf Intracoastal Waterway - Across San Antonio Bay
- #3 - FY17 : Corpus Christi Ship Channel - PA13 Containment Dike Raise
- #4 - FY18 : Matagorda Ship Channel - Matagorda Pen. To Point Comfort
- #5 - FY19 : Corpus Christi Ship Channel - Channel Improvement Project (Entrance Channel)
- #6 - FY19 : Gulf Intracoastal Waterway - Across Aransas Bay
- #7 - FY19 : Corpus Christi Ship Channel - PA10 Placement Area Improvements
- #8 - FY19 : Corpus Christi Ship Channel - Jetty Repairs
- #9 - FY19 : Corpus Christi Ship Channel - Salvage Operations
- #10 - FY20 : GIWW - Across San Antonio Bay, GIWW / MSC Intersection
- #11 - FY20 : Channel to Victoria - Beneficial Use Site Improvements
- #12 - FY20 : Corpus Christi Ship Channel - Channel Improvement Project (Lower Bay Reach)
- #13 - FY20 : Gulf Intracoastal Waterway - Contract Award

Last update: a minute ago



Source: Esri, DigitalGlobe, GeoEye, Earthstar Geographics, CN...

Contracts by Project Area



Awarded & Pre-Awarded Contracts by Project Area

Last update: a minute ago

FY16: Channel to Victoria - Maint Pipeline Dredging

- Project Area: Channel to Victoria
- Award Status: Awarded
- Contract Type: Maintenance Dredging
- Resident Office: CCRO
- Solicitation Number: W9126G-16-B-0018
- Contract Number: W9126G-16-C-0039
- Contractor: Goodloe Marine
- Active Construction: No
- Est Range: 5-10 million
- Contract Award Amount: 7983465
- Contract Current Amount: 6147750
- Estimated Quantity: 1350000 cubic yards
- Current Quantity: 1725000 cubic yards
- Finale Quantity: 1709746 cubic yards
- Dredge: NA
- Dredge Type: P
- Contract Required Depth: 16-ft plus 2-ft
- Issue Solicitation: 4/22/2016, 12:00 AM
- Bid Opening: 5/23/2016, 12:00 AM
- Award Date: 6/22/2016, 12:00 AM
- Start Date: 8/30/2016, 12:00 AM
- Required Completion Date: 2/28/2017, 12:00 AM

INFORMATION CONTAINED HEREIN SHOULD NOT BE RELIED UPON WITHOUT FIRST CHECKING WITH THE OPERATIONS MANAGER ASSIGNED TO THE PROJECT

ACTIVE DRAFT RESTRICTIONS

- Project: BRAZOS ISLAND HARBOR (Brownsville Ship Channel)
Reach: Jetty Channel
Proj Depth: 42ft
Restriction: 37ft
- Project: GALVESTON HARBOR AND CHANNEL
Reach: Galveston Inner Harbor
Proj Depth: 46ft
Restriction: 30ft
- Project: GULF INTRACOASTAL WATERWAY (TRIBUTARIES)

click on draft restriction icon in map for additional information

Last update: a minute ago



US Army Corps of Engineers.



OPERATIONS GIS DASHBOARD

<https://www.swg.usace.army.mil/Missions/Navigation/Navigation-Projects-Contracts/>



CESWG Operations Navigation Dashboard



DCPDS Portal - Login
<https://compd.dcpds.cpmis.osd.mil/>

Contract Award Status

Filter by Award Status

Active Construction:

Project Type:

Filter by Project Type

Contracts

114

Last update: a minute ago



#1 - FY16 : Channel to Victoria - Maint Pipeline Dredging



#2 - FY17 : Gulf Intracoastal Waterway - Across San Antonio Bay



#3 - FY17 : Corpus Christi Ship Channel - PA13 Containment Dike Raise



#4 - FY18 : Matagorda Ship Channel - Matagorda Pen. To Point Comfort



#5 - FY19 : Corpus Christi Ship Channel - Channel Improvement Project (Entrance Channel)



#6 - FY19 : Gulf Intracoastal Waterway - Across Aransas Bay



#7 - FY19 : Corpus Christi Ship Channel - PA10 Placement Area Improvements



#8 - FY19 : Corpus Christi Ship Channel - Jetty Repairs



#9 - FY19 : Corpus Christi Ship Channel - Salvage Operations



#10 - FY20 : GIWW - Across San Antonio Bay, GIWW / MSC intersection



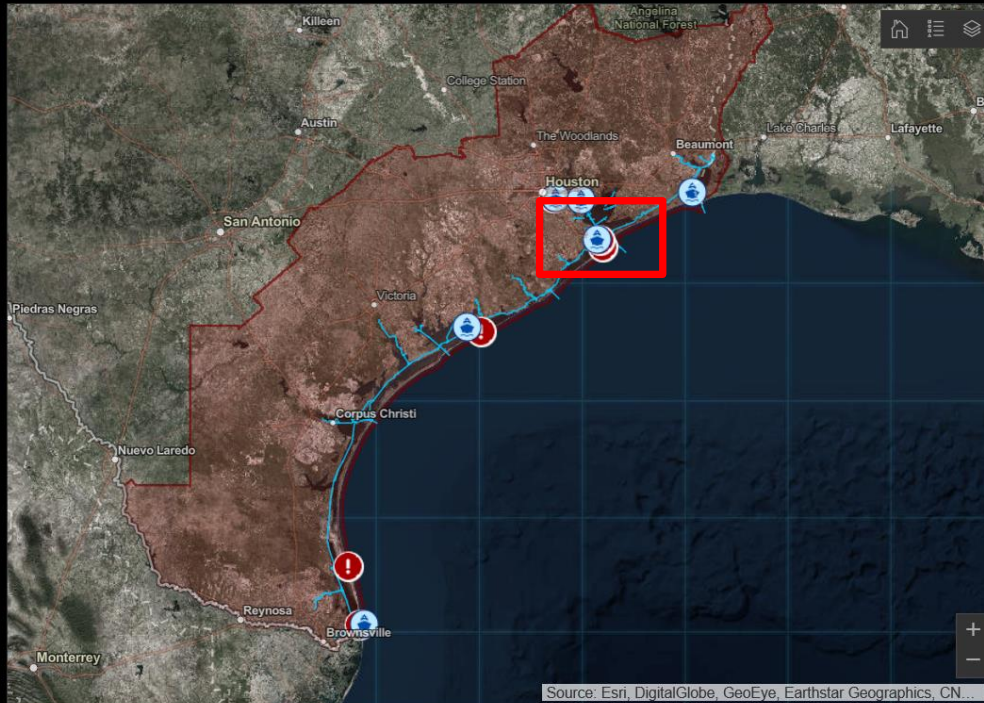
#11 - FY20 : Channel to Victoria - Beneficial Use Site Improvements



#12 - FY20 : Corpus Christi Ship Channel - Channel Improvement Project (Lower Bay Reach)

#13 - FY20 : Gulf Intracoastal Waterway - Contract Award

Last update: a minute ago



Source: Esri, DigitalGlobe, GeoEye, Earthstar Geographics, CN...

Contracts by Project Area



Awarded & Pre-Awarded Contracts by Project Area

Last update: a minute ago

FY16: Channel to Victoria - Maint Pipeline Dredging

- Project Area: Channel to Victoria
- Award Status: Awarded
- Contract Type: Maintenance Dredging
- Resident Office: CCRO
- Solicitation Number: W9126G-16-B-0018
- Contract Number: W9126G-16-C-0039
- Contractor: Goodloe Marine
- Active Construction: No
- Est Range: 5-10 million
- Contract Award Amount: 7983465
- Contract Current Amount: 6147750
- Estimated Quantity: 1350000 cubic yards
- Current Quantity: 1725000 cubic yards
- Finale Quantity: 1709746 cubic yards
- Dredge: NA
- Dredge Type: P
- Contract Required Depth: 16-ft plus 2-ft
- Issue Solicitation: 4/22/2016, 12:00 AM
- Bid Opening: 5/23/2016, 12:00 AM
- Award Date: 6/22/2016, 12:00 AM
- Start Date: 8/30/2016, 12:00 AM
- Required Completion Date: 2/28/2017, 12:00 AM

INFORMATION CONTAINED HEREIN SHOULD NOT BE RELIED UPON WITHOUT FIRST CHECKING WITH THE OPERATIONS MANAGER ASSIGNED TO THE PROJECT

ACTIVE DRAFT RESTRICTIONS

- Project: BRAZOS ISLAND HARBOR (Brownsville Ship Channel)
Reach: Jetty Channel
Proj Depth: 42ft
Restriction: 37ft
- Project: GALVESTON HARBOR AND CHANNEL
Reach: Galveston Inner Harbor
Proj Depth: 46ft
Restriction: 30ft
- Project: GULF INTRACOASTAL WATERWAY (TRIBUTARIES)

click on draft restriction icon in map for additional information

Last update: a minute ago



US Army Corps of Engineers.



<https://www.swg.usace.army.mil/Missions/Navigation/Navigation-Projects-Contracts/>

114

**#16 - FY18 : Gulf Intracoastal
Waterway - Rollover to Causeway &
Bolivar Flare**

#19 - FY18 : Galveston Harbor - Pelican Island Placement Area Improvements

#20 - FY18 : Galveston Harbor - Galveston Inner Harbor Dredging

**#21 - FY19 : Galveston Harbor -
Galveston Entrance Channel and HSC
Bolivar to Redfish**

#22 - FY19 : Galveston Harbor - San Jacinto Placement Area Improvements

#25 - FY19 : Texas City Ship Channel - SPPA 2 Placement Area Improvements

#26 - FY19 : GIWW - PAs 64, and 65 Repairs

#28 - FY20 : Hopper MATOC Task Order - Galveston/Texas City

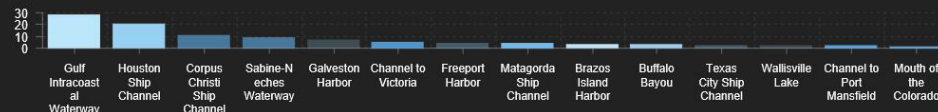
**#32 - FY19 : Houston Ship Channel-
Redfish to Beacon 78 and Bayport
Flare**

#50 - FY20 : Purchase of 2-ea New North River 27-FT "Sounder" Cubby Cabin Skiffs.

#51 - FY20 : Purchase of 1-ea New North River 27-FT "Sounder" Cubby Cabin Skiffs.

#54 - FY20 : Mini-haul-out NO-01
GRAO. (see notes)

Contracts by Project Area




Awarded & Pre-Awarded Contracts by Project Area

Last update: 3 minutes ago

- **Project Area:** Channel to Victoria
- **Award Status:** Awarded
- **Contract Type:** Maintenance Dredging
- **Resident Office:** CCRO
- **Solicitation Number:** W9126G-16-B-0018
- **Contract Number:** W9126G-16-C-0039
- **Contractor:** Goodloe Marine
- **Active Construction:** No
- **Est Range:** 5-10 million
- **Contract Award Amount:** 7983465
- **Contract Current Amount:** 6147750
- **Estimated Quantity:** 1350000 cubic yards
- **Current Quantity:** 1725000 cubic yards
- **Final Quantity:** 1709746 cubic yards
- **Dredge:** NA
- **Dredge Type:** P
- **Contract Required Depth:** 16-ft plus 2-ft
- **Issue Solicitation:** 4/22/2016, 12:00 AM
- **Bid Opening:** 5/23/2016, 12:00 AM
- **Award Date:** 6/22/2016, 12:00 AM
- **Start Date:** 8/30/2016, 12:00 AM
- **Required Completion Date:** 2/28/2017, 12:00

ACTIVE DRAFT RESTRICTIONS

Project BRAZOS ISLAND HARBOR (Brownsville Ship Channel)

 Reach: Jetty Channel
Proj Depth: 42ft
Restriction: 37ft

Project GALVESTON HARBOR AND CHANNEL

 **Reach:** *Galveston Inner Harbor*
Proj Depth: 46ft
Restriction: 38ft

Project: GULF INTRACOASTAL WATERWAY
(TRIBUTARIES)

Last update: 3 minutes ago



**US Army Corps
of Engineers.**



OPERATIONS GIS DASHBOARD

<https://www.swg.usace.army.mil/Missions/Navigation/Navigation-Projects-Contracts/>

Contracts

114

Last update: 3 minutes ago

#16 - FY18 : Gulf Intracoastal Waterway - Rollover to Causeway & Bolivar Flare

#19 - FY18 : Galveston Harbor - Pelican Island Placement Area Improvements

#20 - FY18 : Galveston Harbor - Galveston Inner Harbor Dredging

#21 - FY19 : Galveston Harbor - Galveston Entrance Channel and HSC Bolivar to Redfish

#22 - FY19 : Galveston Harbor - San Jacinto Placement Area Improvements

#25 - FY19 : Texas City Ship Channel - SPPA 2 Placement Area Improvements

#26 - FY19 : GIWW - PAs 64, and 65 Repairs

#28 - FY20 : Hopper MATOC Task Order - Galveston/Texas City

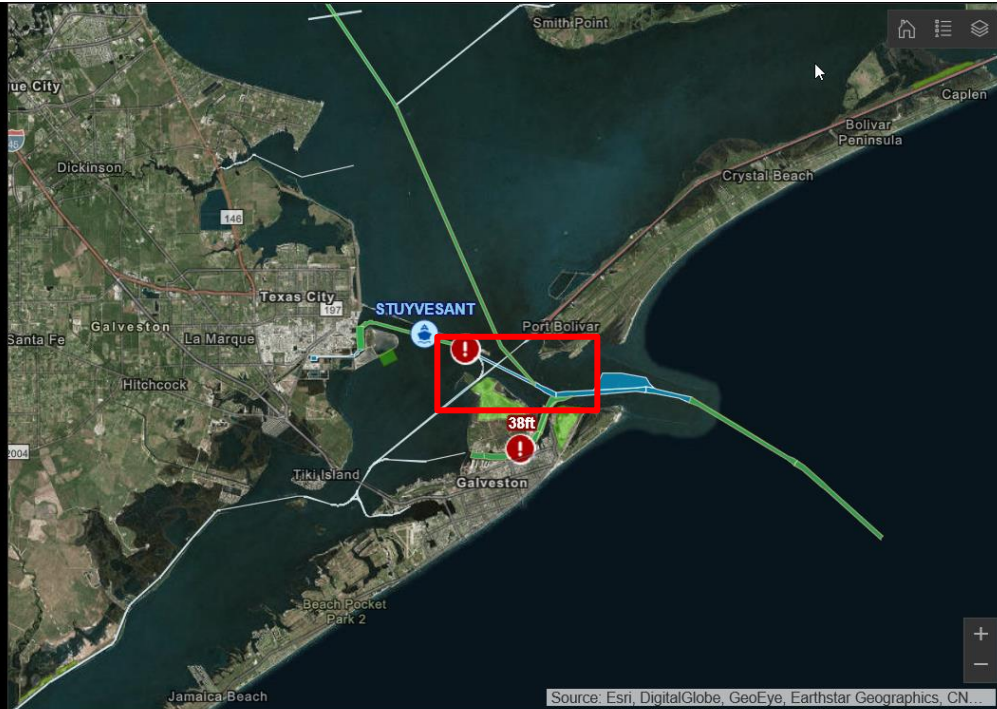
#32 - FY19 : Houston Ship Channel - Redfish to Beacon 78 and Bayport Flare

#50 - FY20 : Purchase of 2-ea New North River 27-FT "Sounder" Cubby Cabin Skiffs.

#51 - FY20 : Purchase of 1-ea New North River 27-FT "Sounder" Cubby Cabin Skiffs.

#54 - FY20 : Mini-haul-out NO-01 GRAO. (see notes)

Last update: a minute ago



Contracts by Project Area



Awarded & Pre-Awarded Contracts by Project Area

Last update: 3 minutes ago

FY16: Channel to Victoria - Maint Pipeline Dredging

- Project Area: Channel to Victoria
- Award Status: Awarded
- Contract Type: Maintenance Dredging
- Resident Office: CCRO
- Solicitation Number: W9126G-16-B-0018
- Contract Number: W9126G-16-C-0039
- Contractor: Goodloe Marine
- Active Construction: No
- Est Range: 5-10 million
- Contract Award Amount: 7983465
- Contract Current Amount: 6147750
- Estimated Quantity: 1350000 cubic yards
- Current Quantity: 1725000 cubic yards
- Final Quantity: 1709746 cubic yards
- Dredge: NA
- Dredge Type: P
- Contract Required Depth: 16-ft plus 2-ft
- Issue Solicitation: 4/22/2016, 12:00 AM
- Bid Opening: 5/23/2016, 12:00 AM
- Award Date: 6/22/2016, 12:00 AM
- Start Date: 8/30/2016, 12:00 AM
- Required Completion Date: 2/28/2017, 12:00 AM

INFORMATION CONTAINED HEREIN SHOULD NOT BE RELIED UPON WITHOUT FIRST CHECKING WITH THE OPERATIONS MANAGER ASSIGNED TO THE PROJECT

ACTIVE DRAFT RESTRICTIONS

Project: BRAZOS ISLAND HARBOR (Brownsville Ship Channel)

Reach: Jetty Channel
Proj Depth: 42ft
Restriction: 3ft

Project: GALVESTON HARBOR AND CHANNEL

Reach: Galveston Inner Harbor
Proj Depth: 46ft
Restriction: 3ft

Project: GULF INTRACOASTAL WATERWAY (TRIBUTARIES)

click on draft restriction icon in map for additional information

Last update: 3 minutes ago



US Army Corps of Engineers.



OPERATIONS GIS DASHBOARD

<https://www.swg.usace.army.mil/Missions/Navigation/Navigation-Projects-Contracts/>

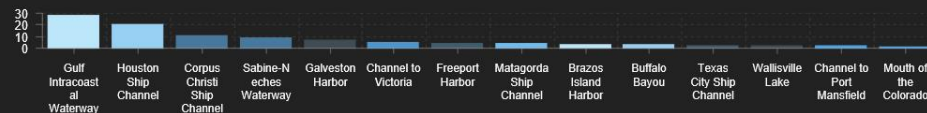
Contracts
114

Last update: 4 minutes ago

- #19 - FY18 : Galveston Harbor - Pelican Island Placement Area Improvements
- #21 - FY19 : Galveston Harbor - Galveston Entrance Channel and HSC Bolivar to Redfish
- #96 - FY21 : Galveston Harbor - Galveston Entrance Channel and HSC Bolivar to Redfish



Contracts by Project Area



Awarded & Pre-Awarded Contracts by Project Area

Last update: a few seconds ago

Last update: 4 minutes ago

FY16: Channel to Victoria - Maint Pipeline Dredging

- Project Area: Channel to Victoria
- Award Status: Awarded
- Contract Type: Maintenance Dredging
- Resident Office: CCRO
- Solicitation Number: W9126G-16-B-0018
- Contract Number: W9126G-16-C-0039
- Contractor: Goodloe Marine
- Active Construction: No
- Est Range: 5-10 million
- Contract Award Amount: 7983465
- Contract Current Amount: 6147750
- Estimated Quantity: 1350000 cubic yards
- Current Quantity: 1725000 cubic yards
- Final Quantity: 1709746 cubic yards
- Dredge: NA
- Dredge Type: P
- Contract Required Depth: 16-ft plus 2-ft
- Issue Solicitation: 4/22/2016, 12:00 AM
- Bid Opening: 5/23/2016, 12:00 AM
- Award Date: 6/22/2016, 12:00 AM
- Start Date: 8/30/2016, 12:00 AM
- Required Completion Date: 2/28/2017, 12:00 AM

***INFORMATION CONTAINED HEREIN SHOULD NOT BE RELIED UPON WITHOUT FIRST

CHECKING WITH THE OPERATIONS MANAGER ASSIGNED TO THE PROJECT**

ACTIVE DRAFT RESTRICTIONS

- ! Project: BRAZOS ISLAND HARBOR (Brownsville Ship Channel)
Reach: Jetty Channel
Proj Depth: 42ft
Restriction: 37ft
- ! Project: GALVESTON HARBOR AND CHANNEL
Reach: Galveston Inner Harbor
Proj Depth: 46ft
Restriction: 38ft
- ! Project: GULF INTRACOASTAL WATERWAY (TRIBUTARIES)

click on draft restriction icon in map for additional information

Last update: 4 minutes ago

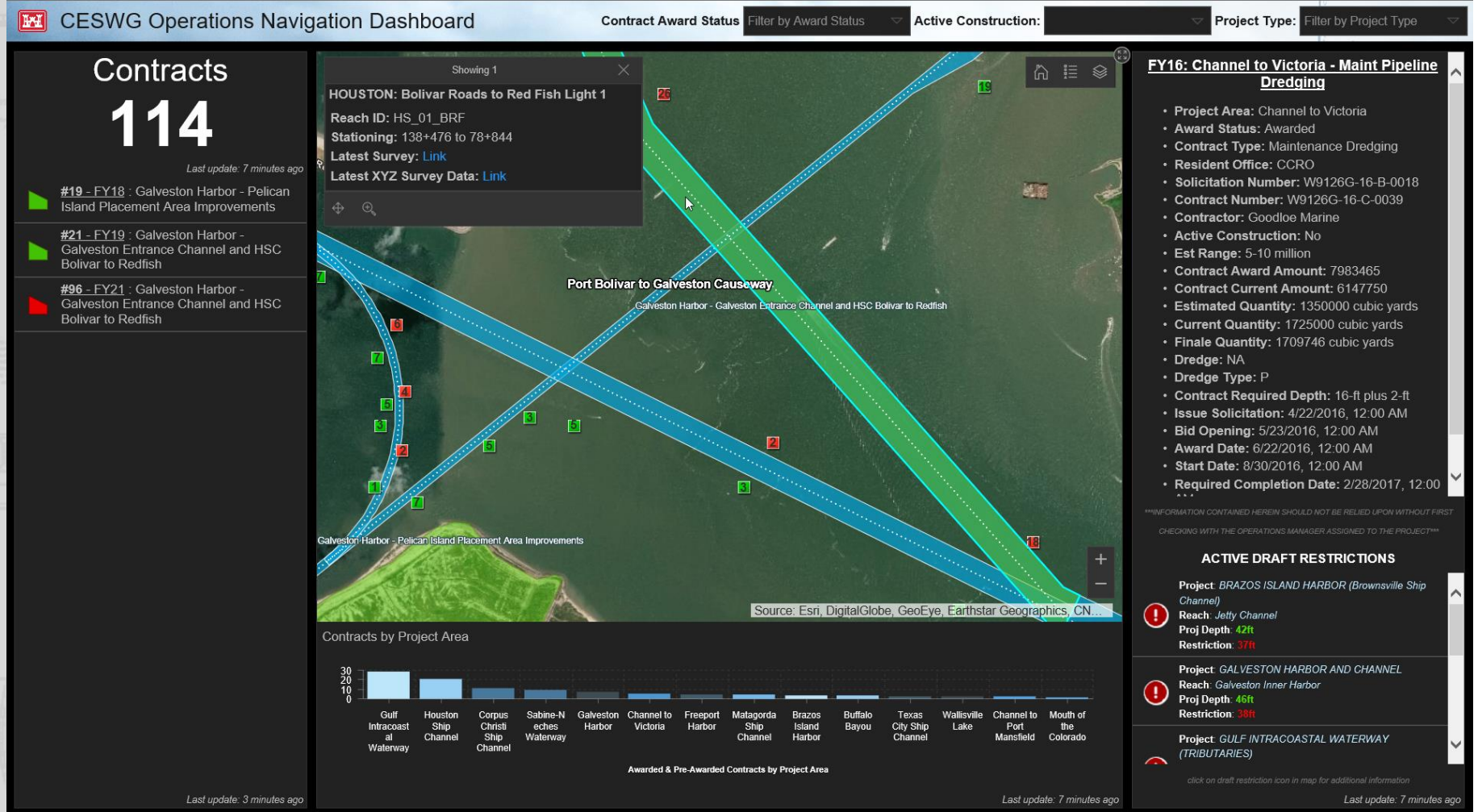


US Army Corps
of Engineers.



OPERATIONS GIS DASHBOARD

<https://www.swg.usace.army.mil/Missions/Navigation/Navigation-Projects-Contracts/>



US Army Corps
of Engineers.





ON FACEBOOK

www.facebook.com/GalvestonDistrict



ON TWITTER

www.twitter.com/USACEgalveston



ON YOUTUBE

www.YouTube.com/GalvestonDistrict



ON DVIDS

www.dvidshub.net/units/USACE-GD



ONLINE

www.swg.usace.army.m



US Army Corps
of Engineers.

