



Full Committee Meeting
27 January, 2022

Navigation Subcommittee Report

Captain Andrew Guidry, Sabine Pilots





Report on Near Miss Working Group Meeting



Report on Alpha Range



Education, Research and Workforce Development Subcommittee Report

Mr. Erik Stromberg, Lamar University



CENTER FOR
ADVANCES IN PORT MANAGEMENT
LAMAR UNIVERSITY

SETWAC FULL COUNCIL MEETING

**EDUCATION, RESEARCH AND WORKFORCE
DEVELOPMENT COMMITTEE**

JANUARY 27, 2022

MEMBER THE TEXAS STATE UNIVERSITY SYSTEM™

Continuing Education—2022 Webinars

- Annual Cyber Security Workshop/Webinar, January 25—Key current issues including NVIC Update. 40 joined the call. Powerpoints to be posted on SETWAC and CAPM websites.
- Assuring an Inclusive Workforce, February
- Digitalization Technologies Facilitating Cargo Movement and Handling in SE Texas, March (in conjunction with Port Digitalization s/c, TRB Ports and Channels Committee)
- Strategic Asset Management – Practical Applications, April (in conjunction with ASCE COPRI Asset Management Task Committee)
- Annual Hurricane Planning Workshop—2022, May
- Economic Development Strategies—Focus on rail-based, port-centric projects, June
- Primer on Developing Economic Impact Assessments, September

CAPM-Sponsored Research at Lamar

2022

- Application of Elastomeric Coatings to reduce the Vibration in the Propeller Shafts System used in Marine Industry
- Development of an Effective Ejector-Pump System to Enable Sustainable Sediment Removal for Port and Other Coastal Infrastructures

2021

- Increasing Resiliency and Safety of Waterways and Ports: A Novel Approach Based on Drone and Artificial Intelligence
- Vulnerability Assessment and Resilience of Port Systems Under Extreme Weather Conditions
- Establishing a Solution to the Problem of Managing Dredge Waste
- Resilience Study for Port-related Refinery Supply Chain Management
- Use of Autonomous Vehicles to Improve Resiliency and Safety of Freight Transportation in Southeast Texas
- Advanced Wetting Dynamics Study: Understanding the Fundamental Physics of Anti-fouling, Anti-Corrosion and Friction Reduction

Workforce Development

- Pathway program – increasing awareness and understanding of port and maritime industries from K-12, to two- and four-year colleges, to advanced degree programs
- Southeast Texas Transportation Week April 2022

Next Steps—Education and Research Meeting

- Workforce Development—Sade has successfully recruited ISD and two-year colleges as well as SETWAC members. Contact: Sade Chick (sc@pobtx.com; 409-835-5367).
- Education and Research -- Needs SETWAC input! February meeting to be scheduled. Please contact me or Captain Ogrydziak if you're interested. Erik Stromberg (rstromberg@lamar.edu; 409-880-7121; 910-617-6800)

SOUTHEAST TEXAS WATERWAY ADVISORY COMMITTEE

Seafarer Welfare
Subcommittee



+

•

○

Update: Seafarer Vaccinations: Doreen Badeaux



Mr. Lewis of the Port Arthur International Seafarers' Center with the Port Arthur Health Department teaming heading to ship to vaccinate the crew

+
•

○

Update: LSC-Orange
Maritime Training
Program by Captain
James Chatlosh
and/or Captain Tyler
Crawford

Your vessel to
the future.

409.882.3032





SETWAC *Ad Hoc* Seafarer Access Committee

- Met at Sabine Pilots' Office on January 20, 2022
- Bryan Markland walked through the Seafarer Access rules with the FSO's
- Proposed a best practice:
 - Seafarers' Center-Labor Representatives & Pilots would submit list to Bryan, and he will forward to FSO so they can post at Gate.
 - This list would be updated monthly
 - Seafarers' Center-Labor Representatives & Pilots no longer obligated to be on agent-prepared gate list.
- Important to recognize that seafarer transportation must be provided irrespective of availability of seafarer center transportation.

+

•

○

Historical Point: 80th Anniversary of Operation Drumbeat



Atlantic Refining tanker *SS Francis E Powell*

- Sailing from Port Arthur to Providence, RI w/ cargo of fuel oil and gasoline
- Torpedoed by U-boat 130
- Crew of 32, 28 survivors
- 2nd of 34 ships attacked enroute to or from SE Texas.

SETWAC Seafarers' Welfare Committee

Fr. Sinclair Oubre, J.C.L., AFNI

1500 Jefferson Drive

Port Arthur, Texas 77642

Phone: 409-749-0171

Email: Sinclair.Oubre@stellamarismail.org

Facebook: www.facebook.com/Stella-Maris-Diocese-of-Beaumont-107480633974106



Questions?

Thank You

COMMERCIAL FISHERMEN

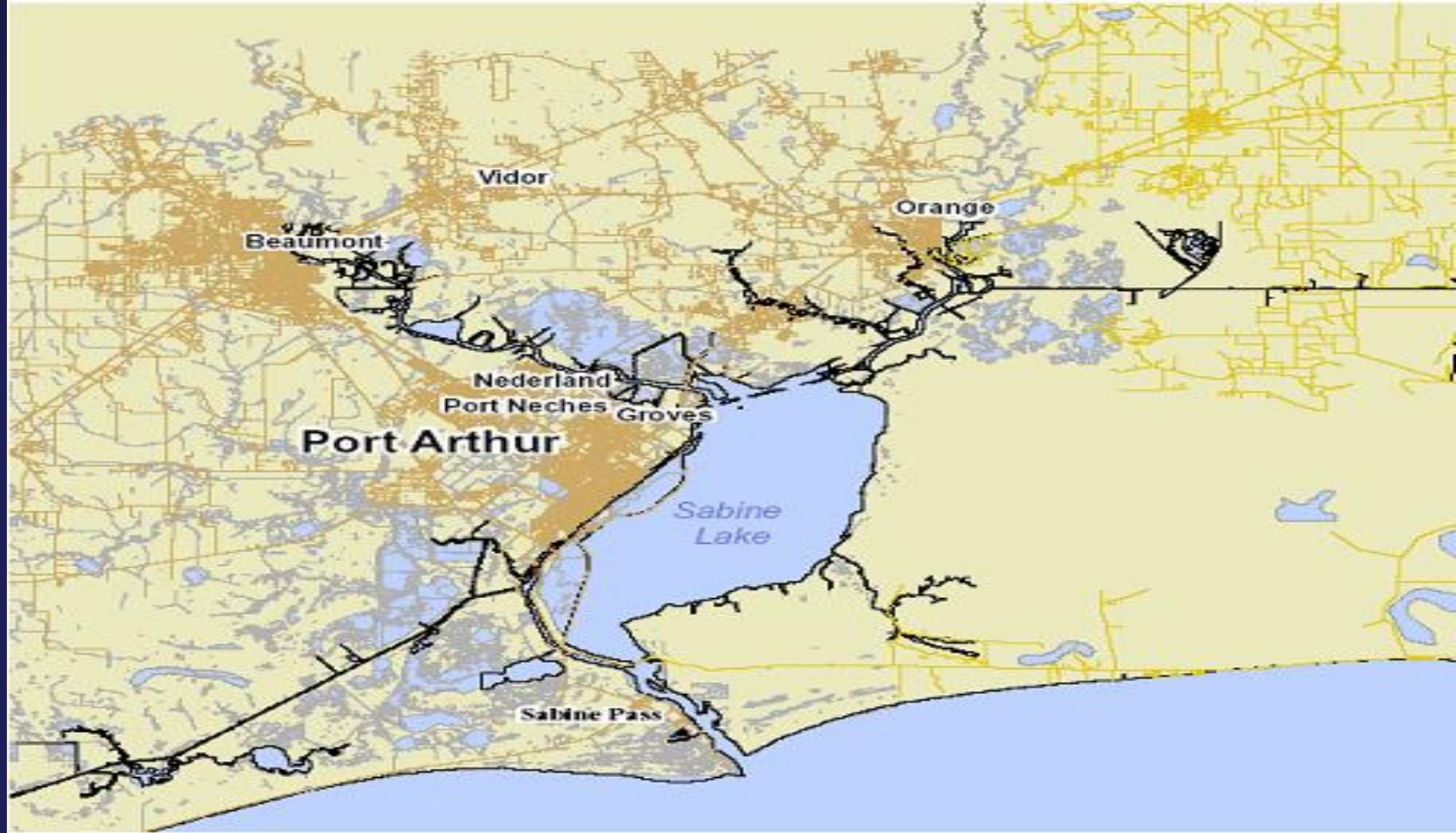
Southeast Texas Waterway Advisory Committee

ALASKAN MARINE SAFETY EDUCATION ASSOCIATION DRILL CONDUCTOR CLASS

10 hour Coast Guard Approved Course Topics
covered in both courses include

- Cold-Water Survival Skills,
- EPIRBs,
- Signal Flares, and MAYDAY Calls,
- Man Overboard Recovery,
- Firefighting,
- Flooding & Damage Control,
- Dewatering Pumps,
- Immersion Suits and PFDs,
- Abandon Ship Procedures, Helicopter Rescue,
Life Rafts, and Emergency Procedures Drills.





Waterway Maintenance and Improvement Subcommittee Report

Larry Fountain, Sabine-Neches Navigation District



Update on Deepening



Pipeline Update

Sabine-Neches Waterway

Operations and Maintenance Update

Timothy J. White, PE, PMP
Resident Engineer

Scott Sherman
Operations Manager

USACE – Galveston District

SETWAC Meeting
January 27, 2022



®

US Army Corps of Engineers
BUILDING STRONG®



Ongoing Contracts

Sabine-Neches Waterway



BUILDING STRONG®



SABINE-NECHES WATERWAY PLACEMENT AREA NO. 8 IMPROVEMENTS



Project:	Sabine-Neches Waterway Placement Area No. 8 Improvements
Type of Work:	Levee Improvements
Placement Area:	PA 8
Type of Equipment:	Excavators; Dozers; Marsh Buggy
Award	April 2021
Req. Completion	Dec 2021
Est. Completion	May 2022

Contractor: Oakhill Constructors



BUILDING STRONG®



SABINE-NECHES WATERWAY PA 11 Improvements



Project:	PA 11 Improvements
Type of Work:	Earth Work
Placement Area:	PA 11
Type of Equipment:	Excavators; Dozers; Marsh Buggy
Advertise	July 2021
Bid Opening	August 2021
Award	September 2021
Req Completion	August 2022
Est Completion	March 2022

Contractor: Affolter Contracting

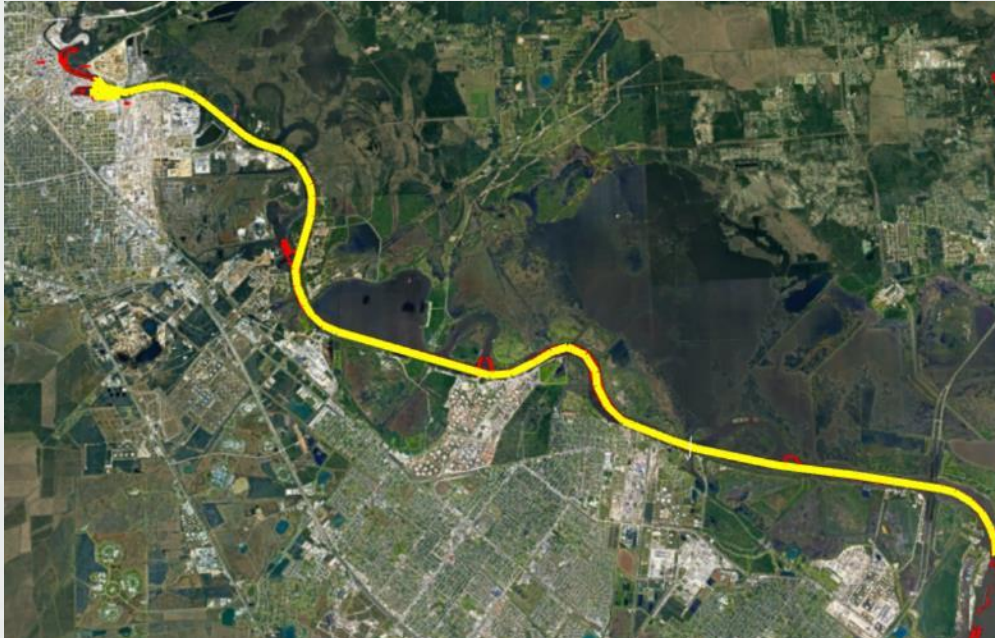


BUILDING STRONG®



SABINE-NECHES WATERWAY

Areas along the NECHES RIVER



Port Arthur Junction and Taylors Bayou are also included in the contract.

Options to be awarded when USACE gets FY22 funds

Project:	Sabine-Neches Waterway SNWW Maintenance Dredging
Dredging Depth:	40ft. Authorized Depth
Dredging Quantity:	Est. 4 MCYs
Material Type:	MAINTENANCE
Dredge Type	Pipeline Dredge
Advertisement	July 2021
Bid Opening	August 2021
Award:	September 2021
Est. Completion	May 2022*

*Completion Time to be extended as
Options get awarded

Contractor: Orion Marine



BUILDING STRONG®



SABINE-NECHES WATERWAY ENTRANCE CHANNEL TO SABINE PASS DEEPENING



Project:	Sabine-Neches Waterway Outer Bar & Bank to Sabine Pass
Dredging Depth:	44 feet + Adv Maint
Dredging Quantity:	Est. 9 MCYs Federal Contract
Material Type:	NEW WORK
Placement Areas:	ODMDS 1 – 4 and A-D
Type of Equipment:	Hopper
Award:	Federal: September 2021 SNND: to follow
Req Completion	June 2023

 Federal Awarded Contract

Contractor: Dutra



BUILDING STRONG®

FY 2022

Future Dredging Contracts

Sabine-Neches Waterway



BUILDING STRONG®



SABINE-NECHES WATERWAY OUTER BAR & BANK



Project:	Sabine-Neches Waterway Outer Bar & Bank
Dredging Depth:	42ft. Authorized Depth
Dredging Quantity:	Est. 2 MCYs
Material Type:	MAINTENANCE
Dredge Type	Hopper Dredge
Advertisement	May 2022
Bid Opening	June 2022
Award:	July 2022
Est. Completion	December 2022



BUILDING STRONG®

**SABINE
TO
GALVESTON

PORT ARTHUR
&
ORANGE**



BUILDING STRONG®



Orange County Coastal Storm Risk Management Project



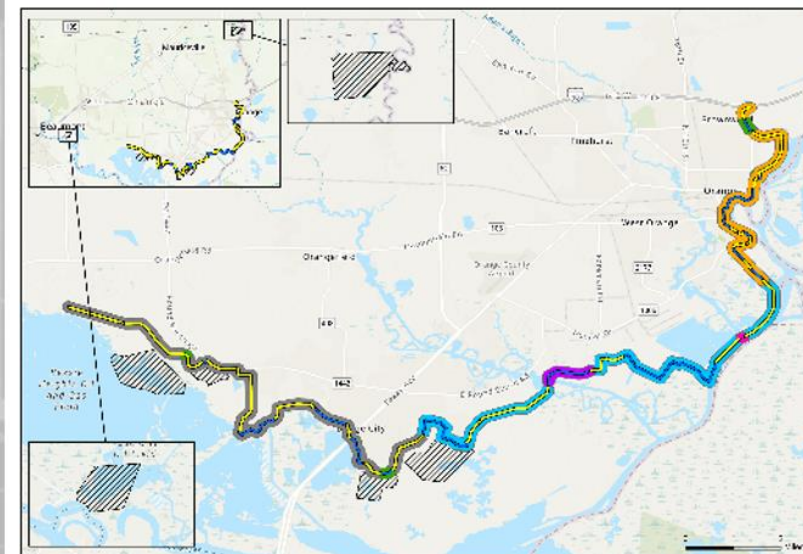
US Army Corps
of Engineers

A new levee/floodwall system:

The Orange County Coastal Storm Risk Management (CSRM) Project includes construction of a new levee/floodwall system to reduce storm surge damage caused by hurricane and tropical storm events that affect the southern half of Orange County along the Sabine River and Bessie Heights Marsh. The proposed project alignment follows the edge of the Sabine and Neches River floodplain from the City of Orange and ends West of Bessie Heights, measuring approximately 26.3 miles. This includes construction of 15.6 miles of levees, 10.7 miles of floodwalls, 7 pump stations, 56 internal drainage structures, 32 closure gates located at road and railway crossings, 2 navigable sector gates and 6 environmental mitigation areas.

Objectives:

The new CSRM Project is intended to reduce risk to human life and reduce economic damages to business, residents, and infrastructure from storm surge while ensuring no **additional** induced interior flooding.



Orange County
Coastal Storm Risk Management Project

Levee
Floodwall
Contract OC01
Contract OC02
Contract OC03
Contract OC04
Contract OC05
Contract OC06

Project Schedule:



Contract #	Scope	Contract #	Scope
OC01	Cow Bayou Complex – 84 ft Navigable Gate, Pump Station	OC04	7 Pump stations, tie ins, gates, drainage structures
OC02	2.4 miles floodwall, 3.0 miles levee, 18 gates, drainage structures	OC05	2.6 miles floodwall, 7.6 miles levee, 7 gates, drainage structures
OC02A	4.2 miles floodwall, 4.9 miles levee, 5 gates, drainage structures	OC06	6 Mitigation sites to compensate for impacts to forested wetlands and estuarine marsh
OC03	Adams Bayou Complex – 84 ft Navigable Gate, Pump Station		





Port Arthur and Vicinity Coastal Storm Risk Management Project



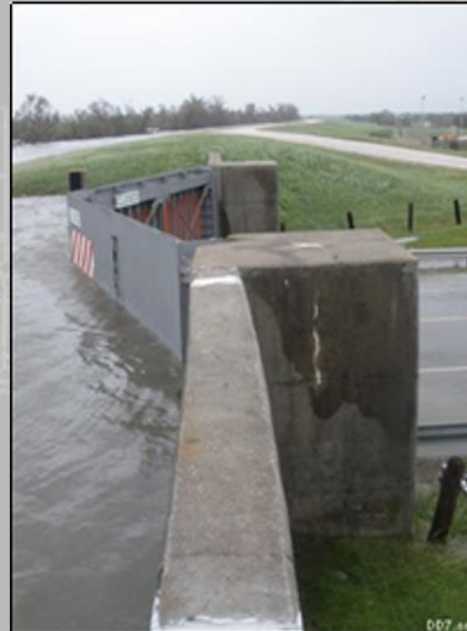
US Army Corps
of Engineers.

Reinforcement of an existing levee/floodwall system:

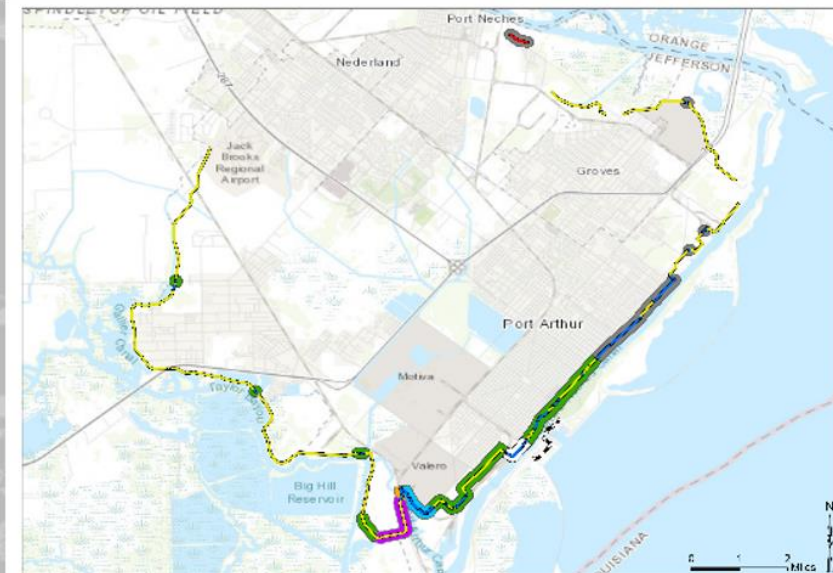
The Port Arthur and Vicinity Coastal Storm Risk Management (CSRM) Project in Jefferson County will result in improvements and additions to the existing Hurricane Flood Protection Project (HFPP). The plan includes raising approximately 5.5 miles of the existing 27.8 miles of earthen levee and constructing or reconstructing approximately 5.7 miles of floodwall. A separate 1,830 feet of new earthen levee will be constructed in the Port Neches area northwest of the existing northern terminus. Additionally, 26 vehicle closure structures will be replaced and erosion protections will be added.

Objectives:

The improved CSRM system is intended to increase the level of performance and resiliency of the existing Port Arthur and Vicinity HFPP.



Road closure gate



Port Arthur and Vicinity
Coastal Storm Risk Management Project

Project Schedule:



Contract #	Scope	Contract #	Scope
PAV01	1.1 miles levee raise	PAV03A	3.3 miles levee raise, 1.9 miles floodwall replacement, 1 gate
PAV02	0.2 miles floodwall replacement	PAV03B	0.02 miles levee raise, 0.5 miles floodwall replacement, 7 gates
PAV03	0.1 miles levee raise, 1.0 miles floodwall replacement, 11 gates	PAV04	0.4 miles levee raise, 0.4 miles new levee, 2.0 miles floodwall replacement, 3 gates



Taylors Bayou



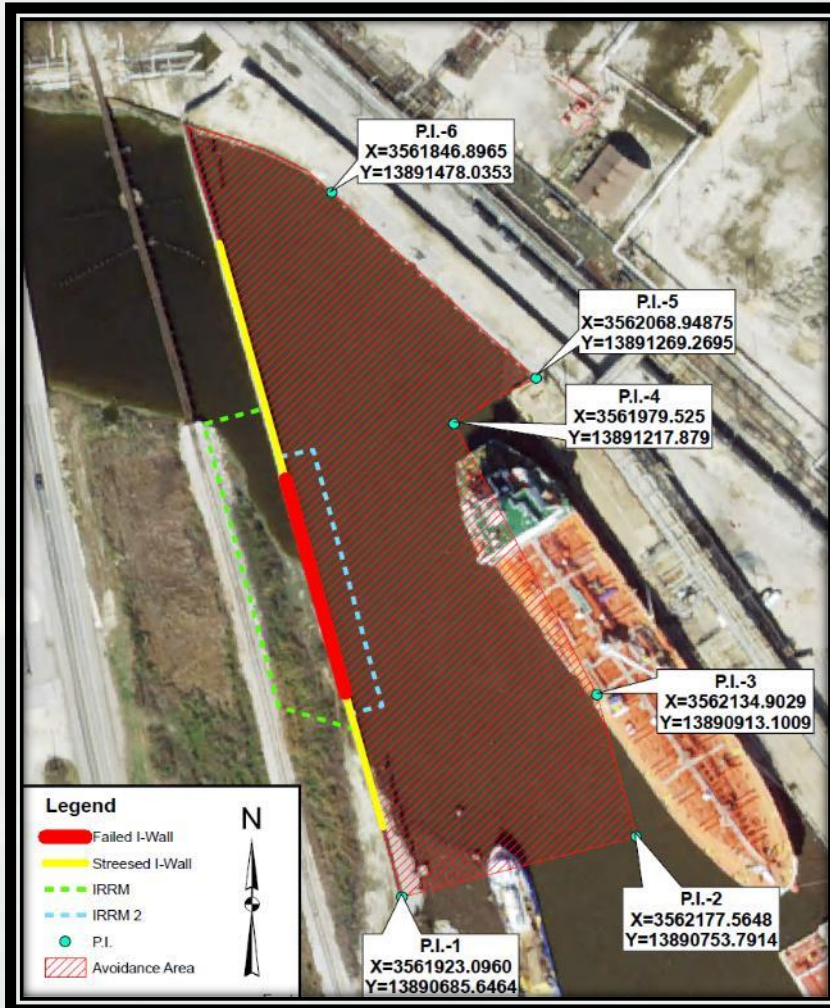
BUILDING STRONG®

TAYLORS BAYOU UPDATE



BUILDING STRONG®

Taylor's Bayou Current Restrictions

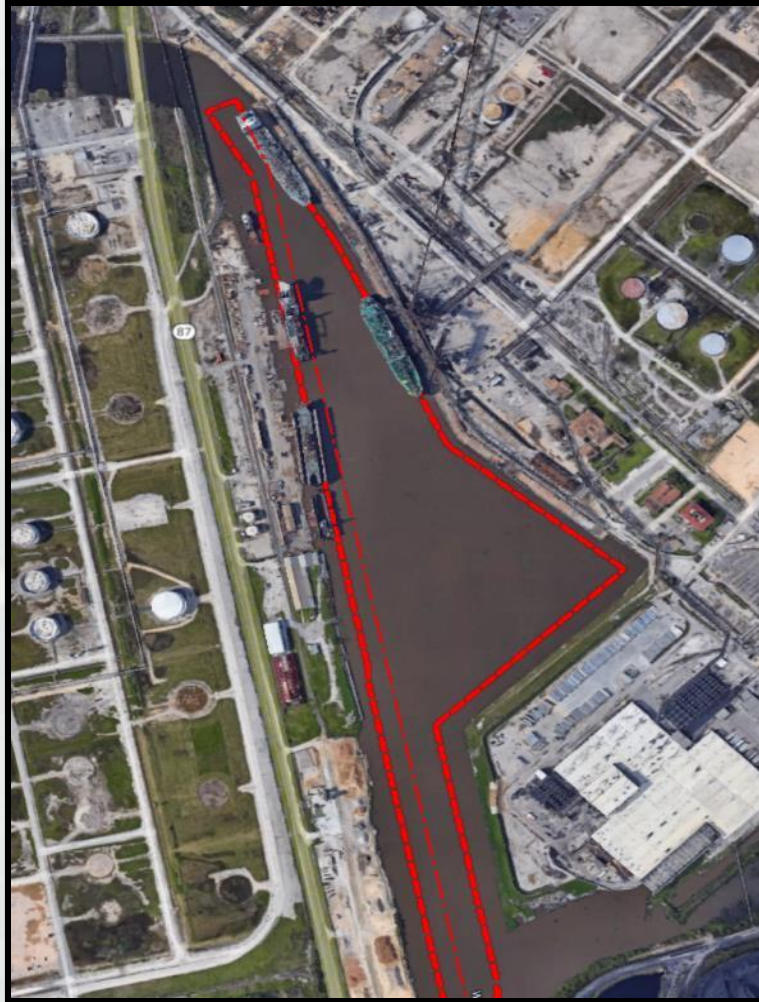


Current Status:

- Vessel Traffic Allowed in Hatched Area shown in Figure WITH LIMITATIONS put on tugs.
- Wall and temporary protection is being monitored by DD7 and USACE.



Taylor's Bayou Proposed Channel Improvement Changes



Current



Proposed

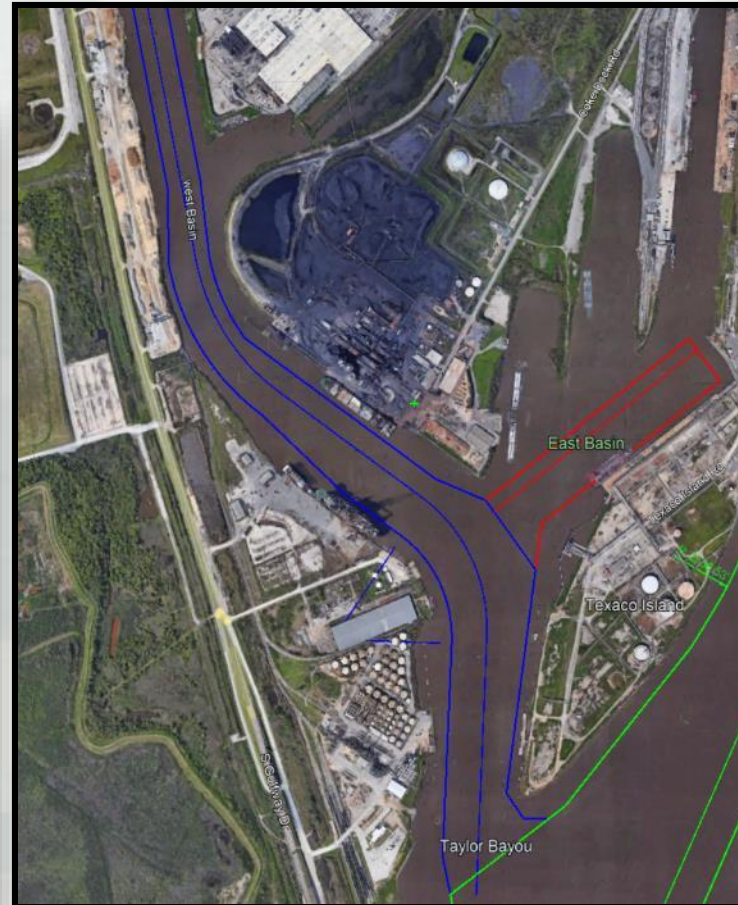


BUILDING STRONG®

Taylor's Bayou Proposed Channel Improvement Changes



Current

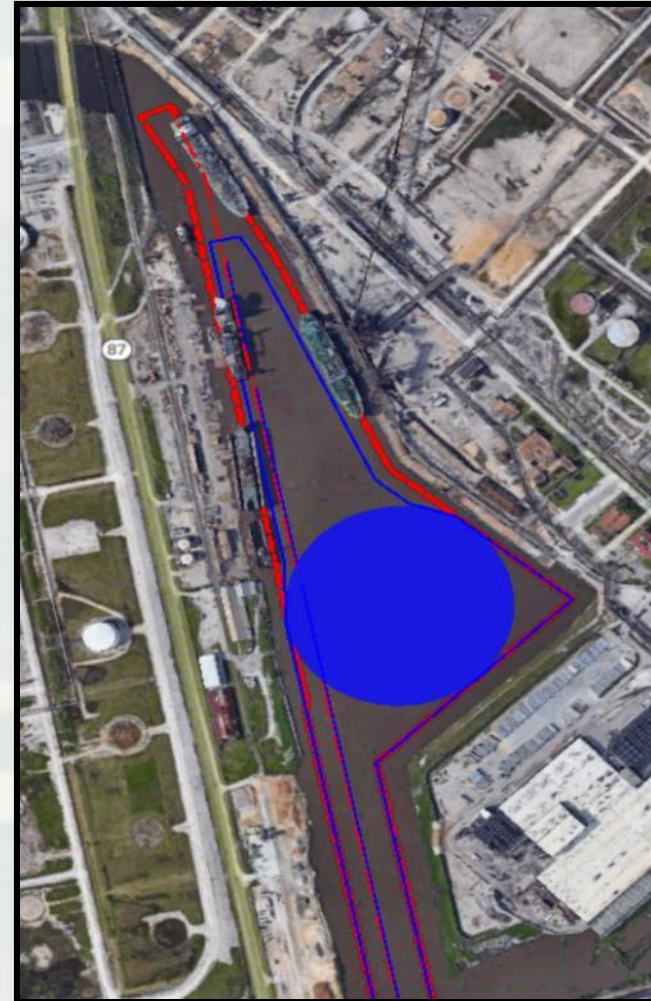


Proposed



BUILDING STRONG®

Taylor's Bayou Proposed Channel Improvement Changes



Overlay



BUILDING STRONG®

Questions?



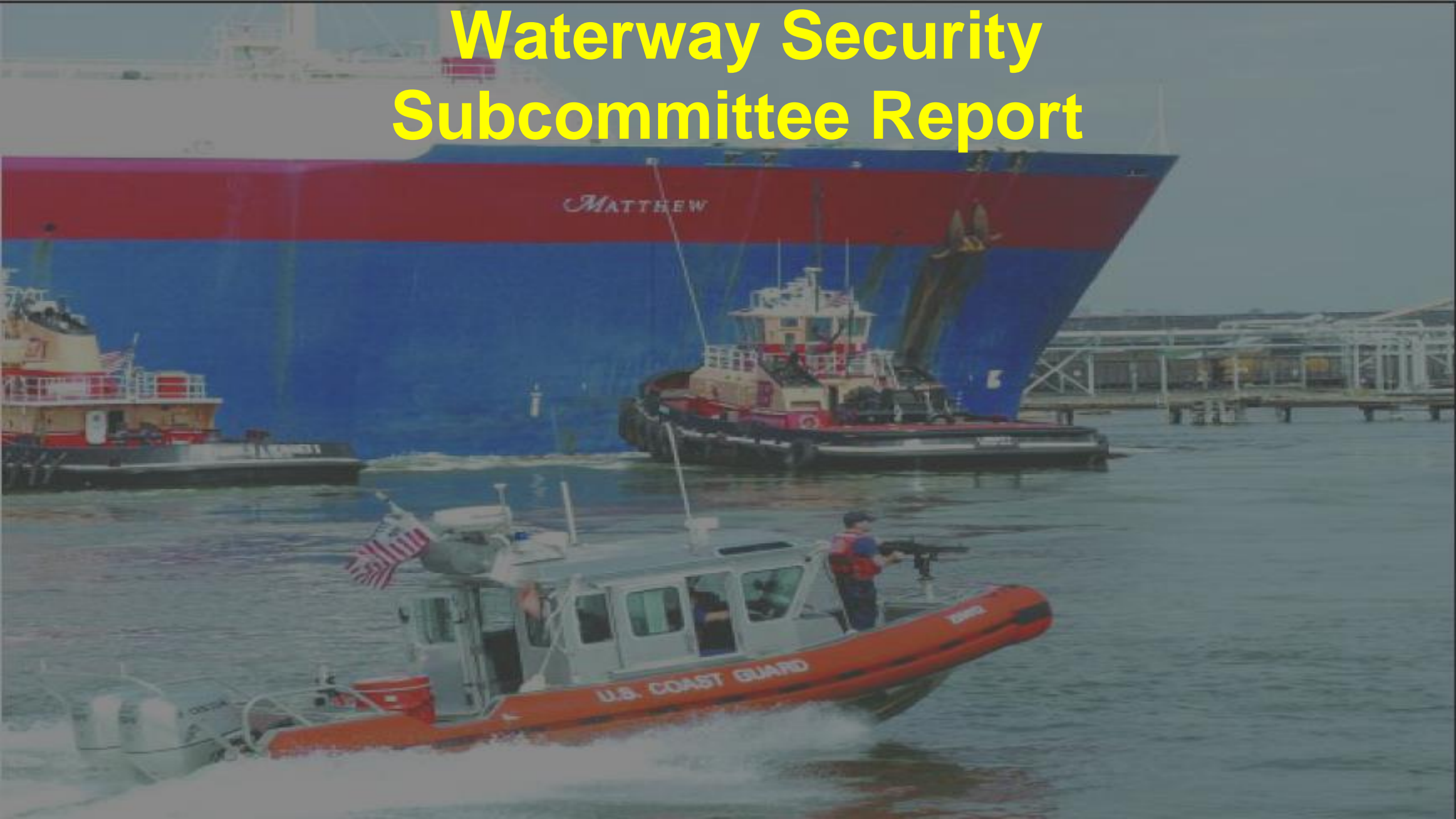
Scott Sherman
CESWG-ODN
409-937-5009
scott.d.sherman@usace.army.mil

Timothy J. White, P.E., PMP
CESWG-ECC-NP
409-985-2000 ext.1412
timothy.j.white@usace.army.mil



BUILDING STRONG®

Waterway Security Subcommittee Report





AMSC and Port Security Specialist Report

Jeremy.D.Hansen@uscg.mil

USCGC ANT Sabine

ATON REPORT



Current ATON Discrepancies



AID
Sabine Pass Alpha RRL- Destroyed
Neches River U RRL- Destroyed

QUESTIONS/COMMENTS ?





New Business

STATE OF THE WATERWAY - 2021





Report on Sabine Pass

Mr. Mic Cowart



Texas General Land Office

VTS/WATERWAYS CONTACTS



- Scott Whalen, Director VTS Port Arthur,
(409) 719-5086 scott.k.Whalen@uscg.mil
- Douglas Hendrix, Operation/Training Manager,
(409) 719-5083 douglas.g.hendrix2@uscg.mil
- Vessel Traffic Center, Watch Supervisor 24hrs
(409) 719-5070 msupportarthur-vtssup@uscg.mil
- VTS Webpage – <https://www.atlanticarea.uscg.mil/vtsportarthur/>
- Homeport Website – <http://homeport.uscg.mil>

Mark Your Calendars

Upcoming SETWAC Meetings



Working Group Meeting

Thursday, April 14, 2022

10:00 am

Sabine-Neches Navigation District Office

Full Committee Meeting

Thursday, April 28, 2022

10:00 am

MSU Port Arthur

