



Full Committee Meeting
23 January, 2020

Navigation Subcommittee Report

Captain Charlie Tweedel, Sabine Pilots





Orbit NGL WSA Report and Recommendations

**See Attachment
in Folder**



Martin Midstream WSA



Traffic for 2019



Education, Research and Workforce Development Subcommittee Report

Mr. Erik Stromberg, Lamar University



CENTER FOR
ADVANCES IN PORT MANAGEMENT
LAMAR UNIVERSITY

**REPORT OF THE RESEARCH, EDUCATION AND WORKFORCE
DEVELOPMENT SUBCOMMITTEE**

SETWAC MEETING—JANUARY 23, 2020

**ERIK STROMBERG, EXECUTIVE DIRECTOR
SADE CHICK, CORPORATE AFFAIRS DIRECTOR, POB**

MEMBER THE TEXAS STATE UNIVERSITY SYSTEM™

EDUCATION—INDUSTRY WORKSHOPS

2020 PROPOSED WORKSHOPS (Schedule to be published on SETWAC website.)

- Lamar University Research Showcase (CICE, April 1--tentative)
- Resiliency Symposium (Elegante Hotel, April 17)
- *Hurricane Planning—2020 (April 26)*
- *Freight-based, Port-centric Economic Development (June)*
- Covey's 'Seven Habits of Highly Effective People' (July)
- Cyber Security: Workshop (October)
 - Executive Breakfast Briefings (Fall)
- Workforce Development (October)
- *Risk Analysis and Decision-Making (November)*

SETWAC TOPIC RECOMMENDATIONS? PLANNING/SPEAKING VOLUNTEERS?

EDUCATION—FOUR-COURSE GRADUATE-LEVEL CERTIFICATIONS

- TRADE AND ECONOMICS
- PORTS AND LOGISTICS
- PORT AND MARINE TERMINAL MANAGEMENT
- CYBER SECURITY (IN DEVELOPMENT)

EDUCATION—NON-ACADEMIC CERTIFICATIONS

SETWAC RECOMMENDATIONS?

RESEARCH

- RESILIENCY
 - HIGHLY RELEVANT TOPIC—NATIONAL-WIDE
 - SE TEXAS INITIATIVES
 - RECENT: GLO--UT SAN ANTONIO
 - ONGOING: US EDA—LAMAR UNIVERSITY
 - PROPOSED: FLOOD COORDINATION--LAMAR UNIVERSITY/UT
- RESEARCH SHOWCASE—APRIL 1, CICE

NATIONAL AND REGIONAL RESILIENCY STUDIES— SELECTED CURRENT

- US Transportation Research Board: “Improving Freight Transportation Resilience in Response to Supply Chain Disruptions” (NCFRP 50):
[file:///C:/Users/rstromberg/Downloads/25463%20\(3\).pdf](file:///C:/Users/rstromberg/Downloads/25463%20(3).pdf)
- US Cte on Maritime Transportation (CMTS)-Resiliency Integrated Action Team (2018 Study):
https://www.cmts.gov/downloads/CMTS_RIAT_2017Hurricanes.pdf
- Florida Ports Council:
file:///C:/Users/rstromberg/OneDrive%20-%20lamar.edu/Documents/CAPM%20Research/Resiliency/2019%20Florida%20Ports%20Council_Resiliency_Report-v6-web.pdf

SE TEXAS FLOOD COORDINATION STUDY: LAMAR UNIVERSITY/UT AUSTIN

- Develop a wide-area flood plan for SE Texas
- Develop flood model for future storms
- Develop flood mapping during response
- Create a regional geodatabase
- ***The above will aid in:*** Plan for mitigation measures for flood inundation, predict where and when flooding might occur for different events, and respond during times of need.
- **Study Team:** *Lamar Univ: Liv Haselbach (Team leader), University of Texas, Texas Department of Transportation, Texas Department of Emergency Management, Texas Department of Public Safety, United States Army Corps of Engineers, Local Drainage Districts, County Floodplain Managers, US Geological Survey, River Authorities.*

ECONOMIC RECOVERY AND RESILIENCY PROGRAM—USDOC/EDA

- Goals: Develop a regional economic recovery plan, coordinate activities with local, state, and federal partners, identify funding opportunities that support economic recovery and resiliency in the region.
- Approach: Make projections based on analysis of economic disaster impacts, identify resources needed to support the recovery, and make recommendations to stakeholders that support the economic recovery of industry, business, workforce, and communities in alignment with the economic recovery plan and based on findings from a regional SWOT analysis.
- Output: Host an Economic Recovery and Resiliency Symposium, April 17 to communicate information on needs assessments, economic conditions, and strategies to support economic recovery and resiliency, and establish Lamar University as an information hub on recovery and resiliency resources in the region.
- Team: Lamar University CICE, College of Business and School of Nursing.
- Resources: <https://www.lamar.edu/resilience-recovery/recovery-and-resiliency-grant/index.html>

WORKFORCE DEVELOPMENT

- Continue to develop job opportunity/required education/training matrix
- Workshop on initiative being planned for October 2020
- Continued alignment with AAPA, DOL, LSHSC and Port of Houston
- Texas Governor's Office—maritime as preferred industry cluster: meet with local delegation and Workforce Commission
- Outreach:
 - Speaker's bureau: ISD, technical and four-year colleges. Volunteers?
 - Site visits (non-MTSA facility)
- Develop list of apprenticeships/internships

NEXT STEPS

- BI-MONTHLY MEETINGS (FEBRUARY TBD)
- PLEASE LET ME, SADE OR CANDICE KNOW IF YOU'RE INTERESTED
 - ERIK STROMBERG
 - CANDICE MOORE
 - SADE CHICK



Waterway Awareness Sub-Committee

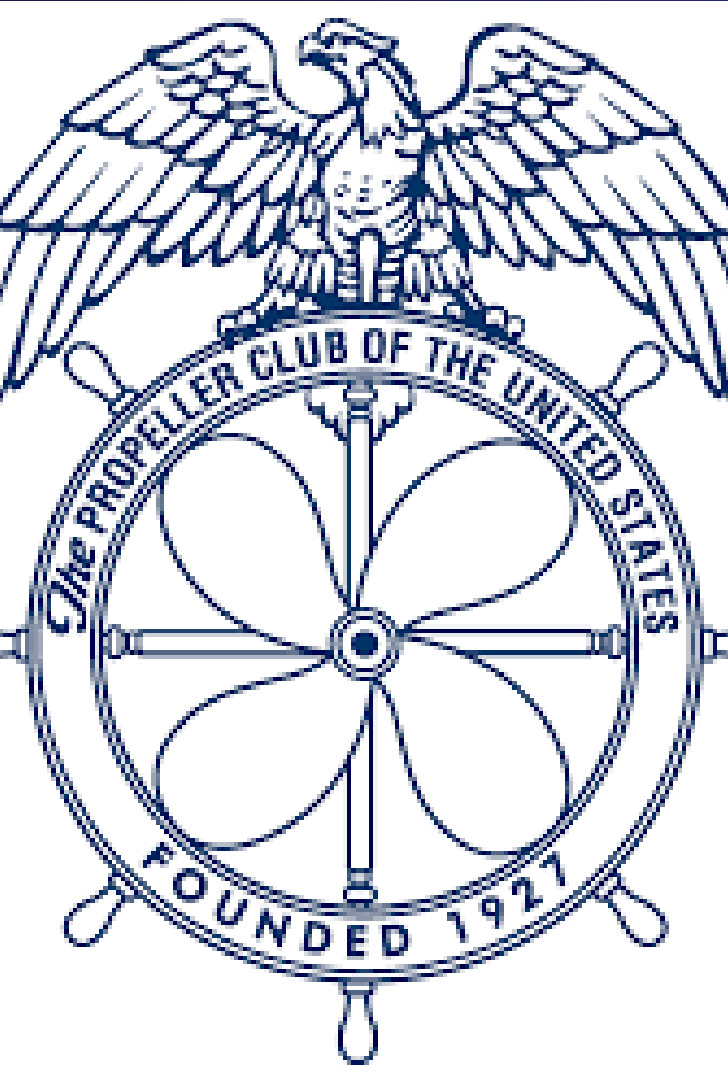
Ms. Sade Chick, Port of Beaumont



Port Welfare Sub-Committee Report

**Southeast Texas Waterway
Advisory Committee
January 23, 2020**

Ms. Doreen Badeaux



Propeller Club Ports of the Sabine & Neches

- Reorganized & first meeting held in October 2019
- Provides Scholarships to Texas A&M Maritime Academy Students from Southeast Texas
- Promotes the maritime industry in Southeast Texas
- Follow us on Face Book: Propeller Club Ports of the Sabine and Neches
- Next meeting: Today, following our SETWAC Meeting here at MSU-Port Arthur

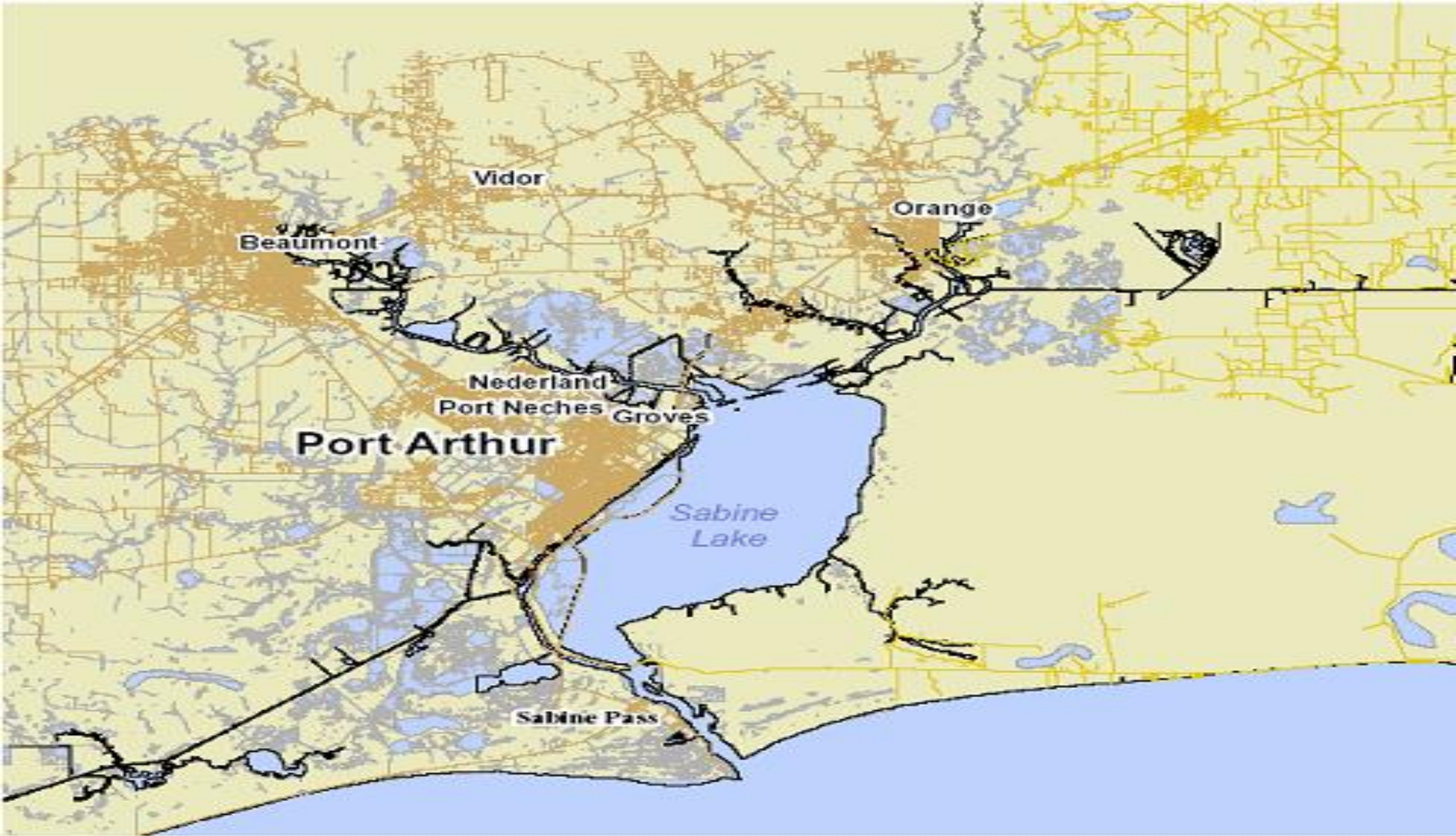
TURBO ACTIVATION 19-PLUS & Maritime Labor Pool

- September 2019, USTRANSCOM orders a Turbo Activation
- 33 vessels activated
- Maritime Labor fully crewed a 33 vessels
- Four vessels had single deficiencies
- MARAD Administrator Notes that we are 1,800 mariners short for long term surge support
- Maritime industry must reflect on recruiting next generation of US merchant mariners, and sufficient billets to support military surges.
- Full Report:
<https://www.ustranscom.mil/foia/docs/USTRANSCOM%20Turbo%20Activation%2019-Plus%20AAR.pdf>



Questions?

Thank You



**Waterway Maintenance and Improvement
Subcommittee Report
Randy Reese, Sabine-Neches Navigation District**



Update on Deepening



Firefighting Plans

Larry Fountain, SNND



Facts

1. The Sabine-Neches water way is responsible for \$133 Billion in business activity.
2. The water way and its partners move over \$40 Billion in gross product.
3. Economic impact of over \$100 million per day.
4. We hold and are tasked with protecting 55% of our nations strategic petroleum reserves.
5. Our water way is the largest LNG and crude oil exporter in the country.
6. We also hold the title of #1 in bulk liquid cargo and jet fuel.

A fast response Fire boat will protect your assets and keep the commerce flowing.



A few of the reasons behind having Fire Boat protection are.

1. Safety
2. Save money
3. Keep the Channel open
4. Liability
5. To protect the environment
6. Insure the flow for commerce
7. Keep production loss time down



**Fire Boats are basically
a insurance policy**

Insurance to keep this from
becoming....





- Fireboats not cheap by any means, but when compared with the value of your Products, Docks, Vessels, Plants, and People it doesn't seem so high if the boat can help save or lessen the down time of any of these.



Pros.
QUICK
RESPONS
E



Quick
response,
with a well
trained crew
will save
cargo



Water Supply to Large scale incidents inland



Protecting Exposures



Tug boat Protection



Several Issues with this option

1. They don't have the training.
2. The tug company would leave it up to the Captain as to what he felt comfortable with.
3. They don't have any equipment other than the water cannons. Such as hoses, dewatering pumps, and fire fighting tools.

The Fireboat outcome!



Salvage Companies

- If you are to wait on them that is just what you would get every time.....A Salvage of what was burning or sinking in the channel.

As the Ports and Industry
grows and expands the
emergency services must to
follow suite.

Sabine-Neches Waterway

Operations and Maintenance Update

Timothy J. White, PE, PMP
Resident Engineer

Belynda Kinman
Operations Manager

USACE – Galveston District

SETWAC Meeting
January 23, 2020



US Army Corps of Engineers
BUILDING STRONG®



Ongoing Contracts

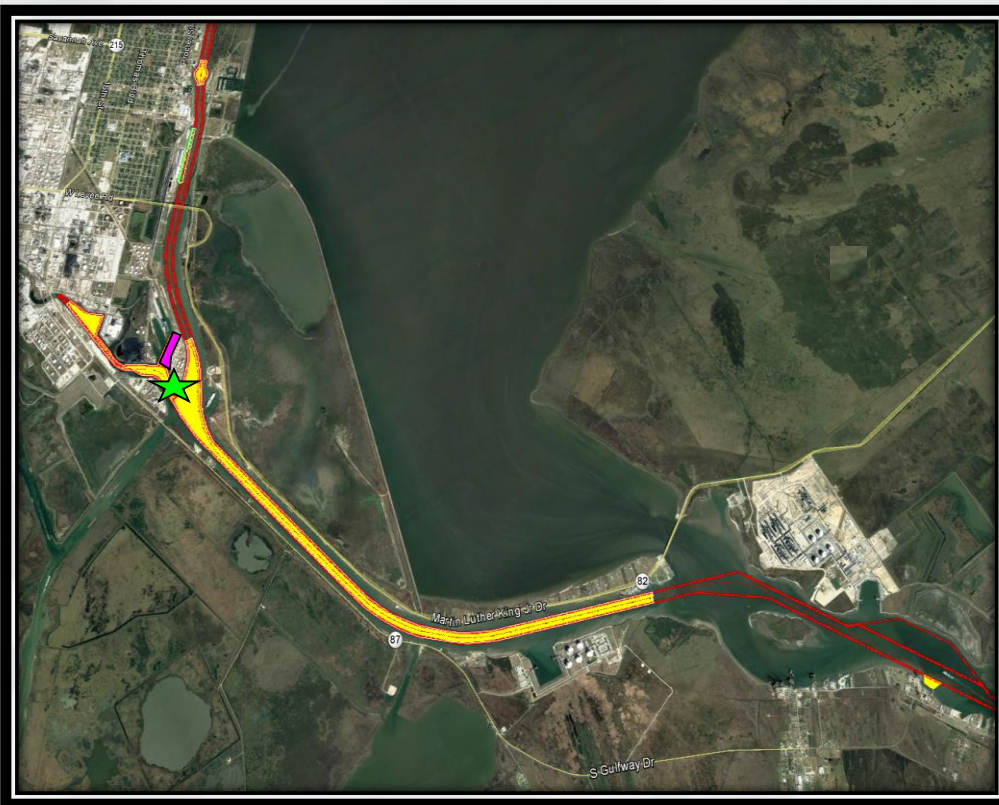
Sabine-Neches Waterway



BUILDING STRONG®



SABINE-NECHES WATERWAY MAINTENANCE DREDGING



Project:	Sabine-Neches Waterway Maintenance Dredging
Dredging Depth:	40 ft. Authorized Depth
Dredging Quantity:	Est. 3 MCYs
Material Type:	MAINTENANCE
Placement Areas:	PAs 8 and 5
Type of Equipment:	Pipeline Dredge
Award Date:	09 August 2019

Contractor: RLB
Dredge: Eagle I ★

 **Completed Areas**



BUILDING STRONG®

FY 2020

Future Dredging Contracts

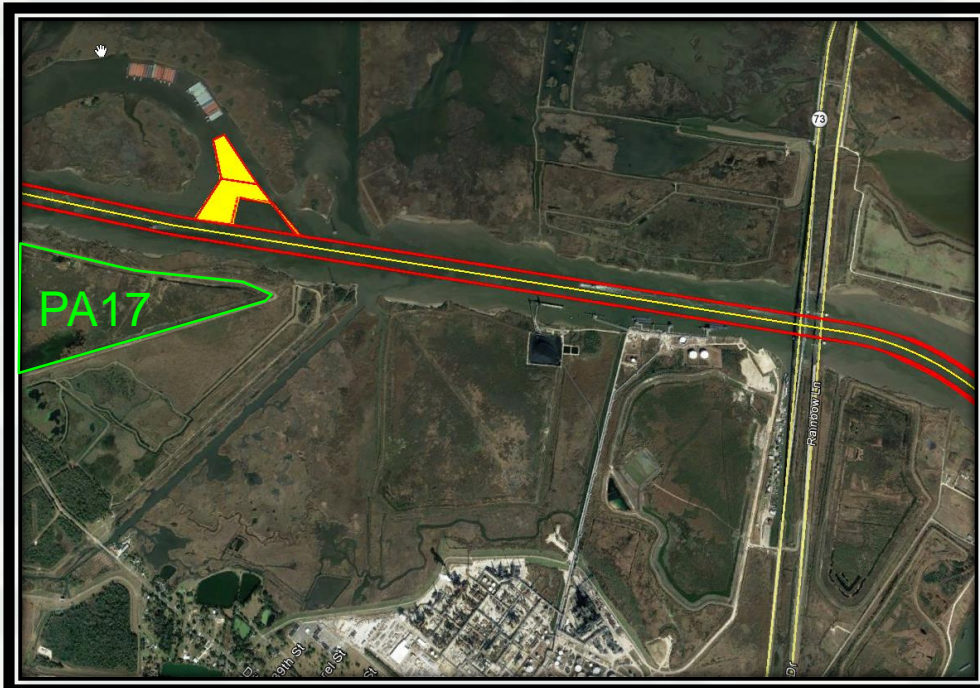
Sabine-Neches Waterway



BUILDING STRONG®



SABINE-NECHES WATERWAY ANCHORAGE BASIN No. 1 NEW WORK



Project:	Sabine-Neches Waterway Anchorage Basin No. 1
Dredging Depth:	42 ft. Required Depth
Dredging Quantity:	Est. 1.3 MCYs
Material Type:	NEW WORK
Placement Areas:	PA 17
Type of Equipment:	Pipeline Dredge
EST Award:	February 2020



BUILDING STRONG®



SABINE-NECHES WATERWAY SABINE PASS AND OUTER BAR & BANK CHANNEL



Project:	Sabine-Neches Waterway Outer Bar & Bank
Dredging Depth:	42 ft. Authorized Depth
Dredging Quantity:	Est. 4 MCYs
Material Type:	MAINTENANCE
Placement Areas:	ODMDS 1 - 4
Type of Equipment:	Hopper/Mechanical
Award:	May 2020
Start Dredging	June 2020



BUILDING STRONG®



SABINE-NECHES WATERWAY ENTRANCE CHANNEL TO SABINE PASS DEEPENING



Project:	Sabine-Neches Waterway Outer Bar & Bank to Sabine Pass **
Dredging Depth:	48 ft. Authorized Depth
Dredging Quantity:	Est. 31 MCYs
Material Type:	NEW WORK
Placement Areas:	ODMDS 1 – 4 and A-D
Type of Equipment:	Hopper/Mechanical
Award:	SEPTEMBER 2020

****Also includes Extension Channel**



BUILDING STRONG®



SABINE-NECHES WATERWAY SABINE PASS TO TAYLORS BAYOU DEEPENING



Project:	Sabine-Neches Waterway Outer Bar & Bank to Sabine Pass **
Dredging Depth:	48 ft. Authorized Depth
Dredging Quantity:	Est. 16 MCYs
Material Type:	NEW WORK
Placement Areas:	PA 5,8 & 9 / ODMDs 4
Type of Equipment:	Pipeline/Hopper
Award:	JULY 2020

Contract to be awarded by the
Sabine-Neches Navigation District



BUILDING STRONG®



SABINE-NECHES WATERWAY PLACEMENT AREA NO. 8 IMPROVEMENTS



Project:	Sabine-Neches Waterway Placement Area No. 8 Improvements
Type of Work:	Levee Improvements
Placement Area:	PA 8
Type of Equipment:	Excavators; Dozers; Marsh Buggy
Env. Window:	None
Reason for Window:	NA
Advertise	May 2020
Bid Opening	June 2020
Award	July 2020



BUILDING STRONG®



SABINE-NECHES WATERWAY

PA 11 Levee Improvements



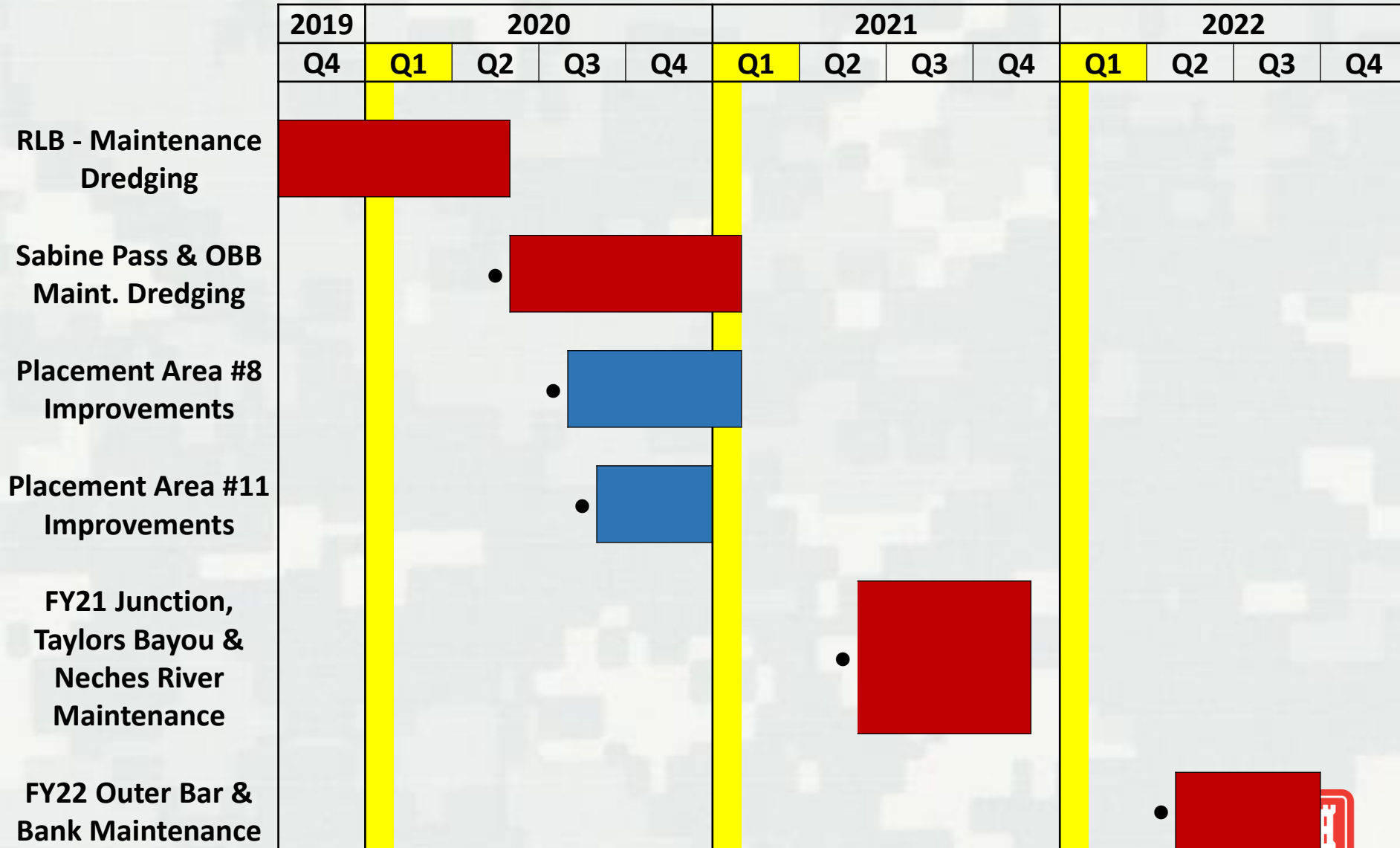
Project:	PA 11 Training Dike Improvement
Type of Work:	Levee Improvements
Placement Area:	PA 11
Type of Equipment:	Excavators; Dozers; Marsh Buggy
Env. Window:	None
Advertise	June 2020
Bid Opening	July 2020
Award	August 2020

***Dependent on Workplan Funding**



BUILDING STRONG®

MAINTENANCE Contracts



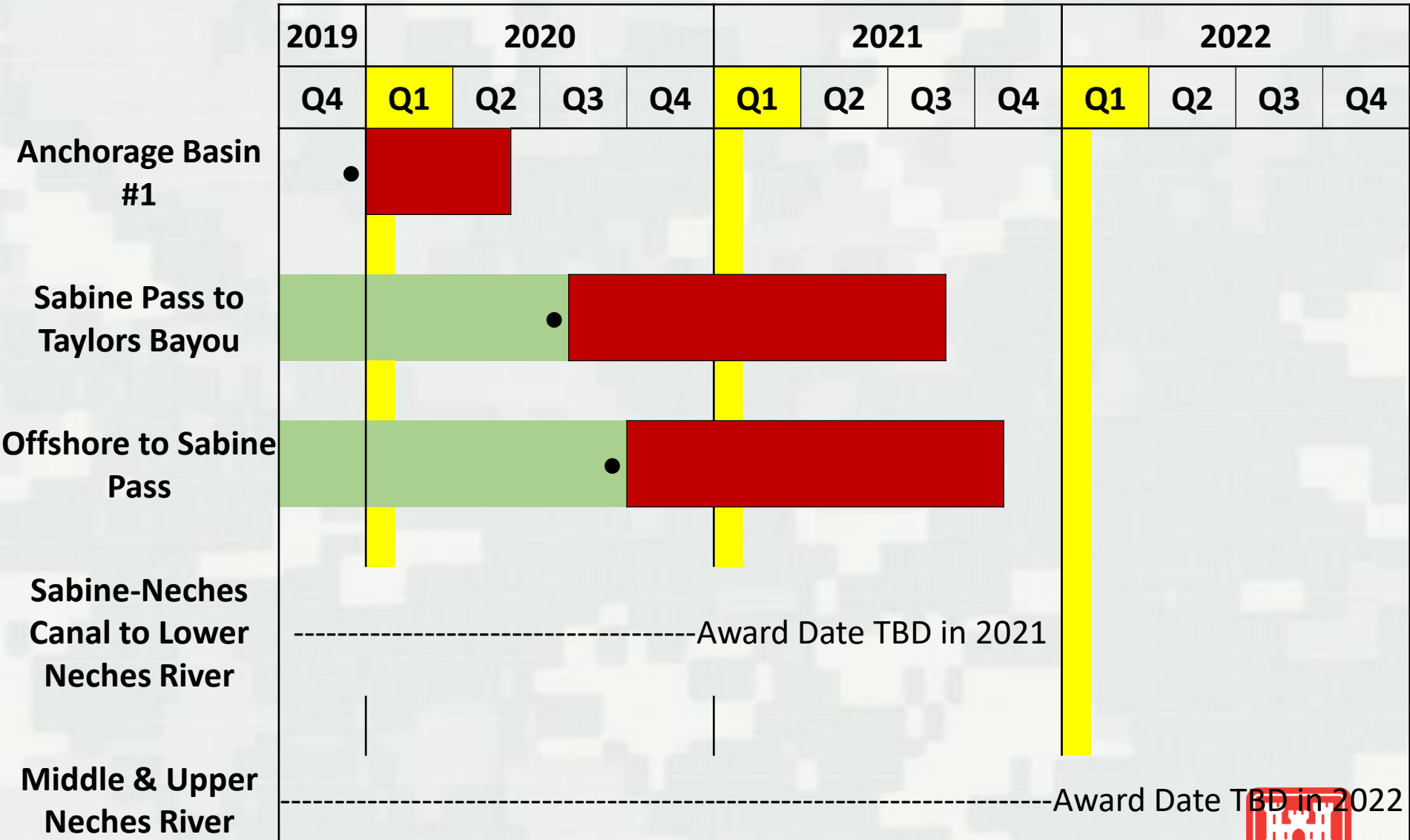
● Award

Dredging

Construction

BUILDING STRONG®

CHANNEL DEEPENING Contracts



Design

● Award

Dredging

Construction

BUILDING STRONG®

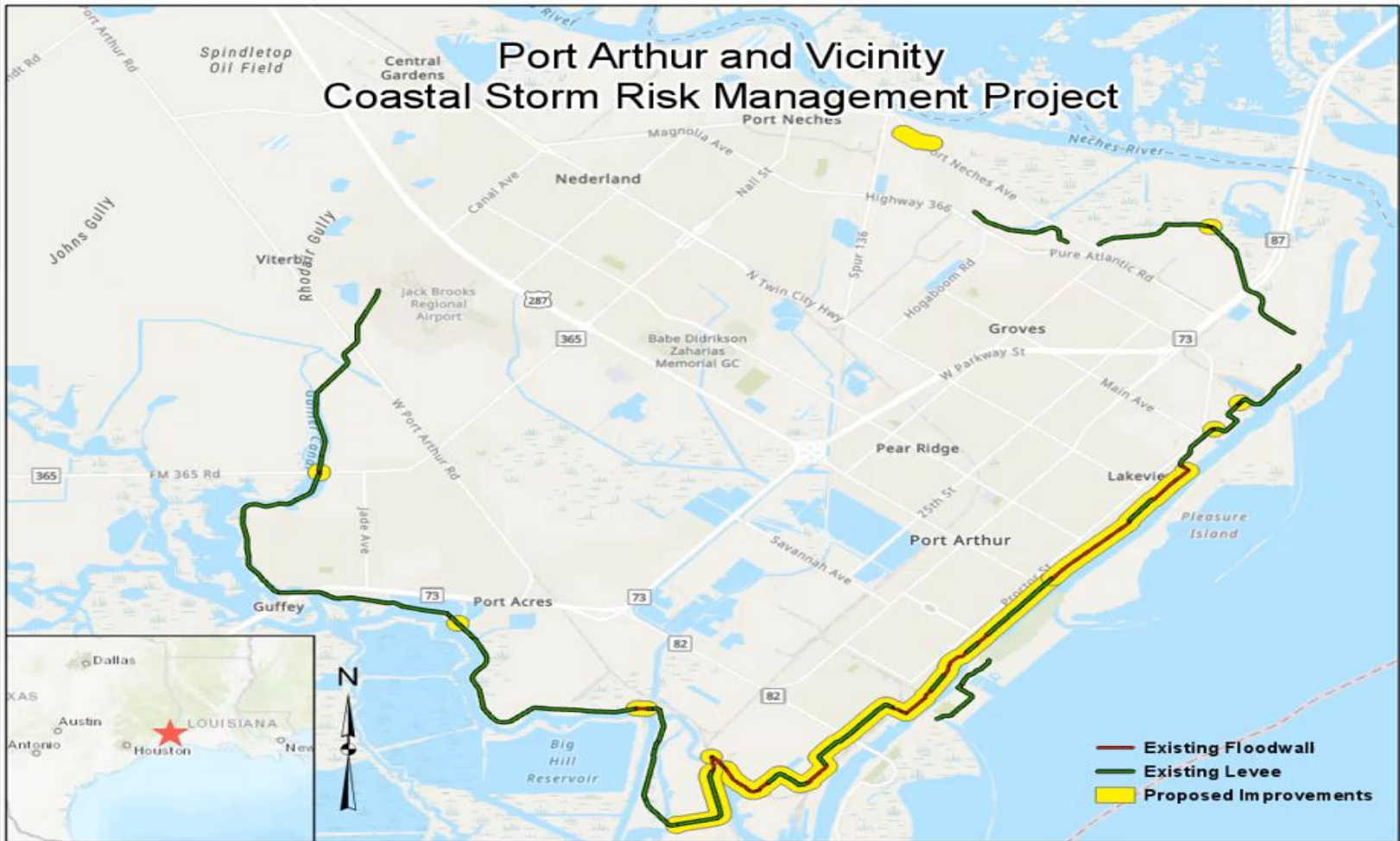


Sabine to Galveston Contracts

[illegible]

GOING STRONG®

Sabine to Galveston Contracts



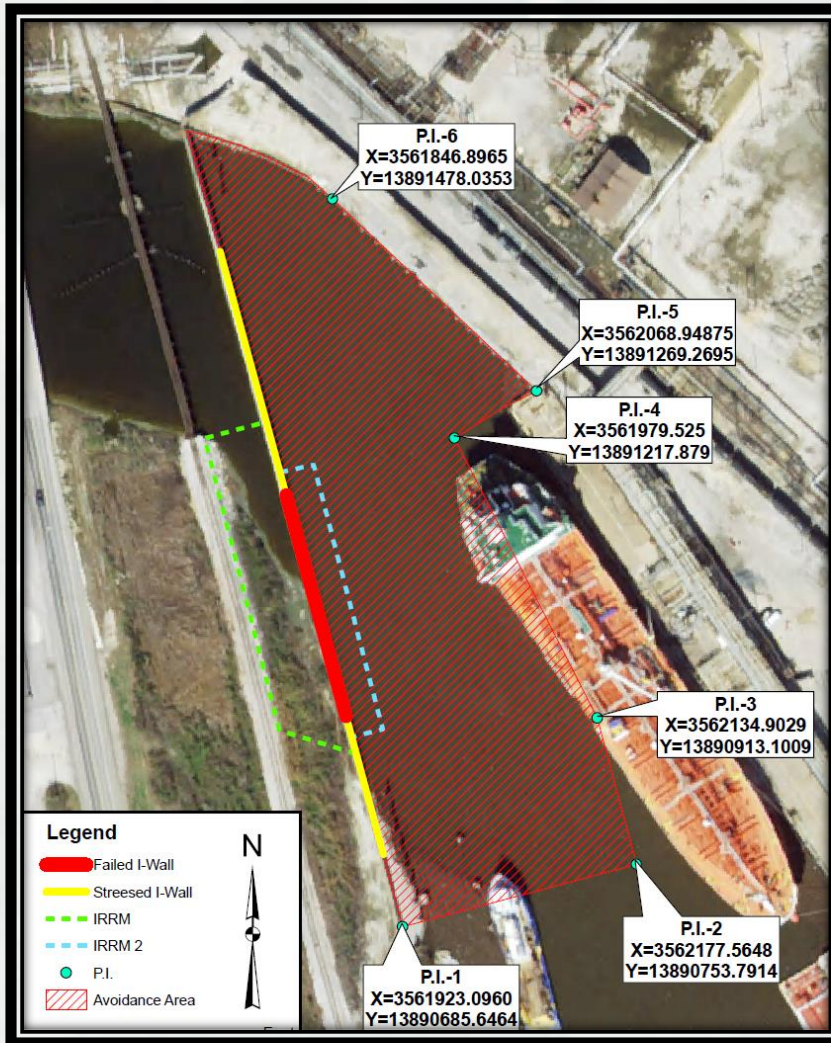
S2G - Port Arthur Construction	2020				2021				2022				2023				2024				2025				2026			
	Q1	Q2	Q3	Q4	Q1	Q2	Q3	Q4	Q1	Q2	Q3	Q4	Q1	Q2	Q3	Q4	Q1	Q2	Q3	Q4	Q1	Q2	Q3	Q4	Q1	Q2	Q3	Q4
Levee Raise																												
Levee Raise & Floodwall Replacement																												
Levee Raise & Floodwall Replacement																												
Levee Raise, Extension & Floodwall Replacement																												

Taylors Bayou Update



BUILDING STRONG®

Taylors Bayou Current Restriction



Current Status:

- Vessel Traffic Allowed in Hatched Area shown in Figure with limitation put on tugs.
- Wall and temporary protection is being monitored by DD7 and USACE.



Questions?



Belynda Kinman
CESWG-ODN
409-766-6323

Belynda.M.Kinman@usace.army.mil

Timothy J. White, P.E., PMP
CESWG-ECC-NP
409-985-2000 ext.1412

timothy.j.white@usace.army.mil



BUILDING STRONG®

Waterway Security Subcommittee Report





Report on Cyber Exercise

USCGC ANT Sabine

ATON Report



Current ATON Discrepancies

LLNR	AID
22885	Sabine-Neches Canal Light 50 TRLB
22890	Sabine-Neches Canal Light 50A TRLB
22940	Sabine-Neches Canal Light 62 TRLB
22980	Sabine-Neches Canal Light 64 TRLB
23000	Sabine-Neches Canal Light 66 TRLB
23045	Sabine-Neches Canal Light 73 TRLB
23100	Sabine River Light 1 TRLB
23210	Sabine River Light 22 TRLB
23265	Old River Obstruction Light 2A TRLB
23305	Neches River Light 7 TRLB
23360	Neches River Light 22 EXT/Damaged
23455	Neches River Light 40A TRLB
23530	Neches River Light 51 TRLB

ATON Changes



AID

Rebuild Neches River Uniform RRL, unsafe to climb due to metal loss and corrosion.

Relocation of Neches River Light 40 and addition of 2 more lights for Sun Oil turning basin project

QUESTIONS/COMMENTS ?





New Business



TPC Explosion Review

LCDR Joel Ferguson



Report On Texas Point Road

Mr. Mic Cowart, Port of Sabine



NOAA Charting

LCDR William Winner, NOAA

NOAA Chart Discussion

SETWAC - 23 January 2020

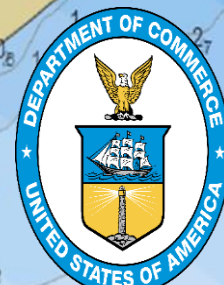
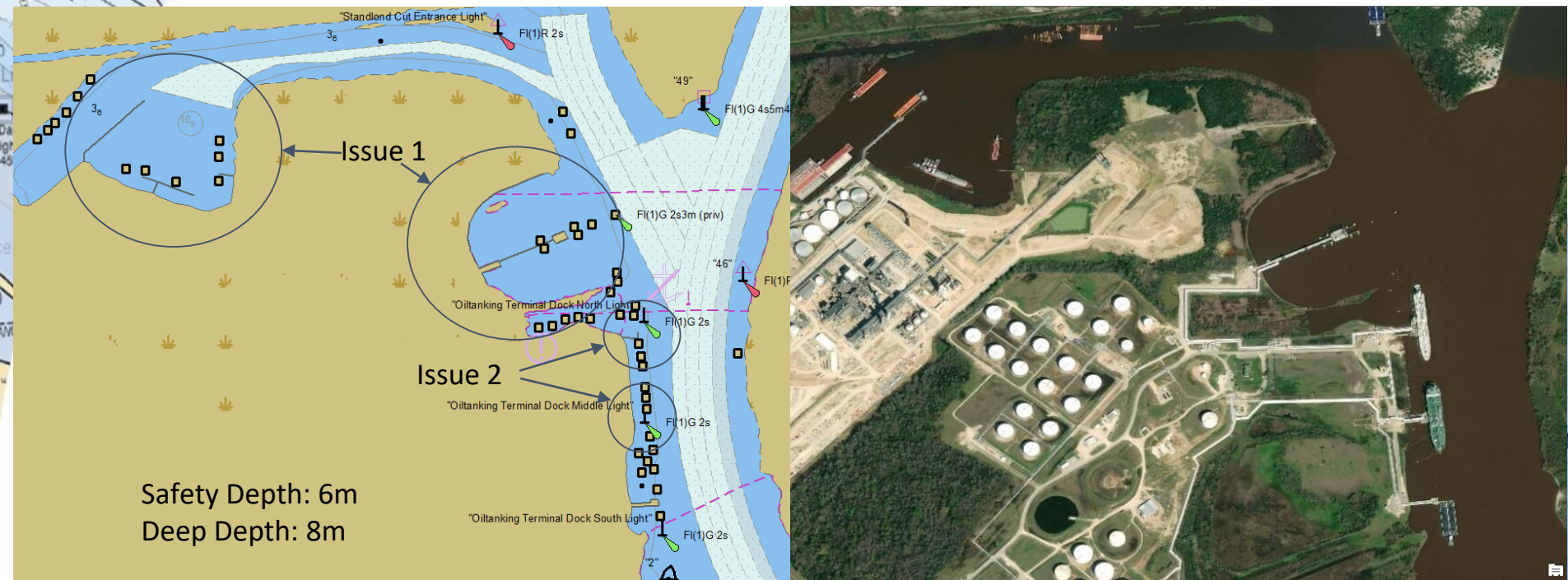


Chart Discussion



NOAA Office of Coast Survey- Marine Chart





USCG Notice of Arrival Screening

MSTC Gregory Bailey, USCG

Update to USCG Port State Control Program

Eliminate Substandard Shipping From US Waters

Policy

- Updated foreign vessel arrival screening policy.
- Focuses on risk factors to assign exam priority.
- Scope and frequency of exam adjusted based on priority.

Targeting

- Evaluation of risk factors to verify compliance with regulations.
- Factors may include:
 - Performance records of the ship
 - Ship's management
 - Classification society
 - Flag State

Terminology

- OLD
 - Priority I, II, NPV
 - ISPS I, II, III
- NEW
 - PSC A, PSC B, PSC C



Waterway Activities

Mr. Scott Whalen, USCG

STATE OF THE WATERWAY - 2019



U. S. PORT RANKINGS 2018

(by total tonnage)

(Millions of Short Tons – 2018 ACOE data)



1	Port of S. Louisiana, LA	275.5	20	Duluth/Superior, MN/WI	35.1
2	Houston, TX	268.9	21	Huntington– Tristate	34.2
3	New York, NY and NJ	140.2	22	Tampa, FL	31.0
4	Beaumont, TX	100.2	23	Pascagoula, MS	27.3
5	Corpus Christi, TX	93.4	24	Richmond, CA	27.2
6	New Orleans, LA	93.3	25	Philadelphia, PA	26.6
7	Long Beach, CA	86.5	26	Seattle, WA	26.0
8	Baton Rouge, LA	82.2	27	Valdez, AK	25.8
9	Port of Virginia	71.7	28	Freeport, TX	25.4
10	Los Angeles, CA	67.8	29	Port Everglades, FL	25.0
11	Mobile, AL	58.6	30	Charleston, SC	24.8
12	Lake Charles, LA	56.9	31	Portland, OR	23.2
13	Plaquemines, LA	56.8	32	Tacoma, WA	22.8
14	Baltimore, MD	44.7	33	Pittsburgh, PA	21.5
15	Texas City, TX	42.6	34	Oakland, CA	19.3
16	Savannah, GA	41.2	35	Jacksonville, FL	17.9
17	Port Arthur, TX	39.8	36	Two Harbors, MN	17.2
18	Cincinnati-Northern, KY	38.5	37	Chicago, IL	16.8
19	St Louis, MO/IL	37.4	134	Orange, TX	1.2

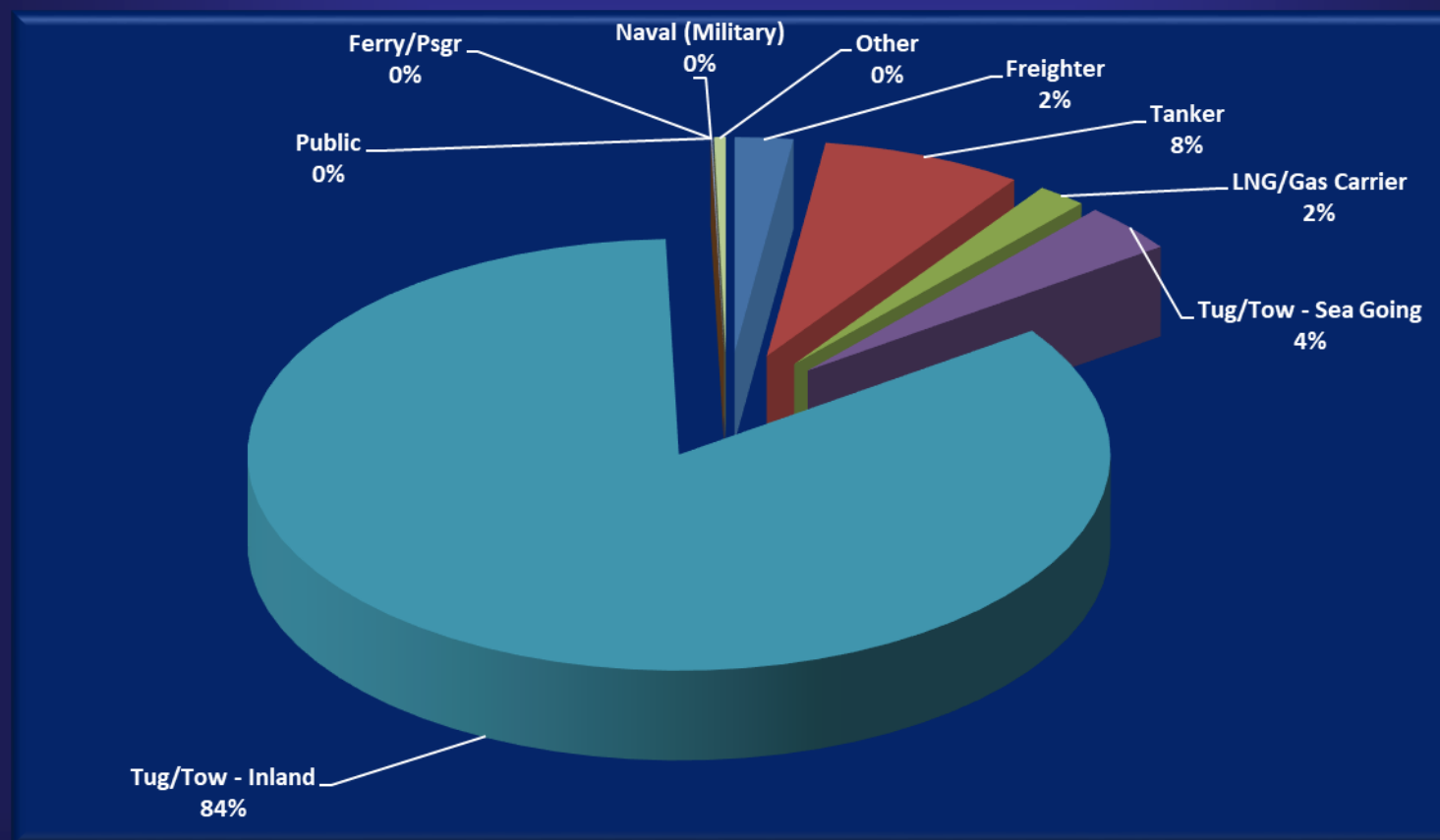
VTS Total Transits – 2019

	<u>2018</u>	<u>2019</u>	<u>%Change</u>
Tug / Tow	52,198	50,311	- 0.04 %
Tanker	4,698	4,326	- 0.08 %
Freighter	1,191	1,251	+ 0.05 %
Gas	925	1,069	+ 15.0 %
Other	<u>350</u>	<u>281</u>	<u>- 20.0 %</u>
Total	58,472	57,238	- 0.02 %

Total Transits 2010 – 2019



TRANSIT SUMMARY by Percentage – 2019



2019 TYPICAL DAY IN THE VTSA



	2018	2019	
TANKER TRANSITS	12.9	11.8	- .08 %
FREIGHTER TRANSITS	3.3	3.4	+ .03 %
GAS CARRIER TRANSITS	2.5	3.0	+ .20 %
TUG (Sea-Going)	5.4	5.7	+ .06 %
TOW TRANSITS	137.6	132.1	- .04 %
OSV / OTHER TRANSITS	0.95	0.80	- .16 %



INCIDENT SUMMARY – 2019

Incidents by Vessel Type

26	Ships
24	Inland Tows
1	Tugs
1	F/V
2	Misc. (e.g. Barges)
1	Facilities (TPC Fire)

55

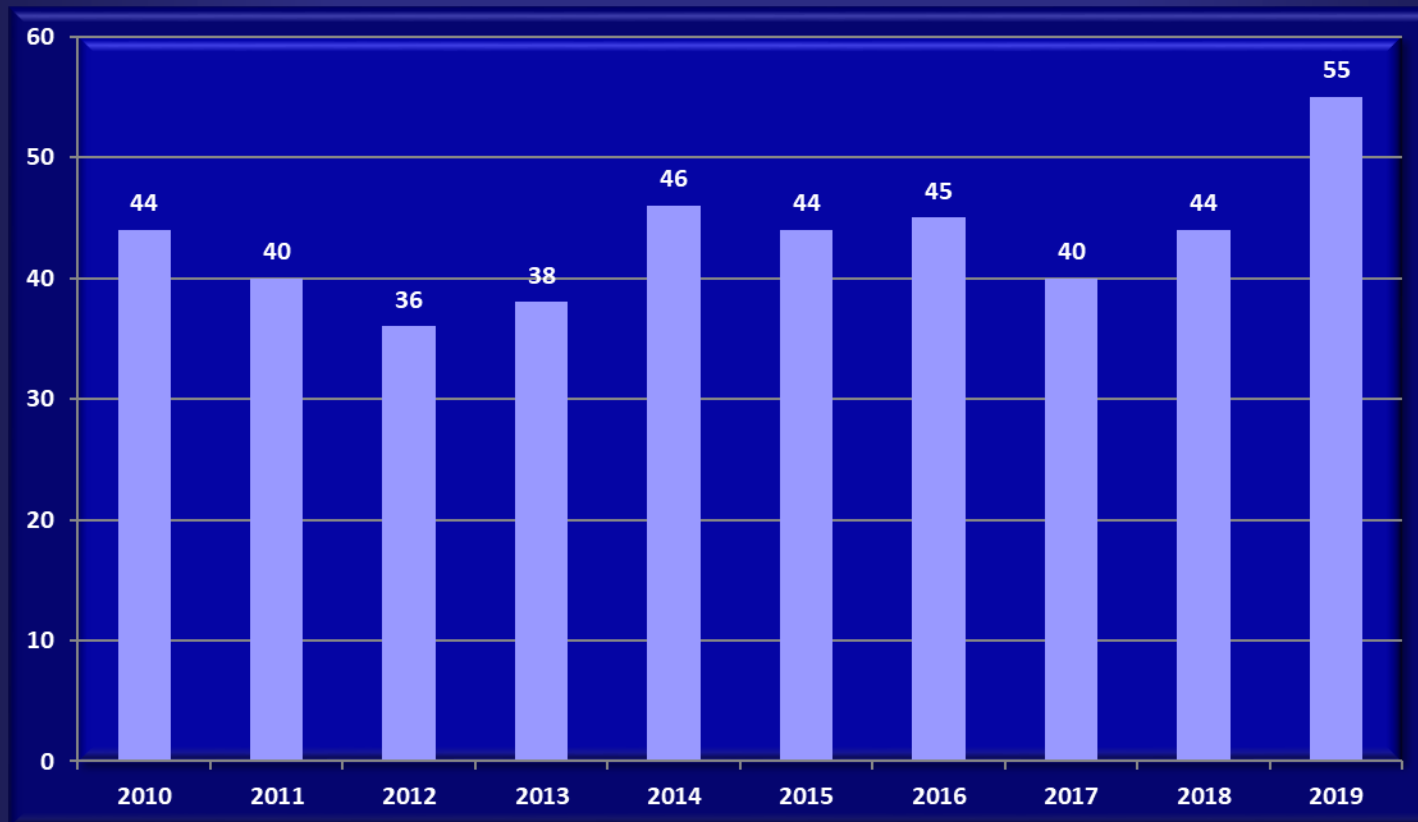
Incidents by Reported Cause

8	COLLISIONS	2
	• ATB and OSV	
6	ALLISIONS	10
	• 2 Reported ATON Knockdowns	
	• 3 Bridge allisions (2 fenders / 1 AD)	
8	GROUNDINGS	3
	• 1 Tanker / 7 ITV	
21	MECHANICAL FAILURE	10
12	MISCELLANEOUS	19
	• 3 Wake Damage	9
	• 1 Breakaway	3
	• 4 Near Miss (2 FVs + 1 outside AOR)	6
	• 1 Fire	1
	• 1 Facility Fire	0

55

44

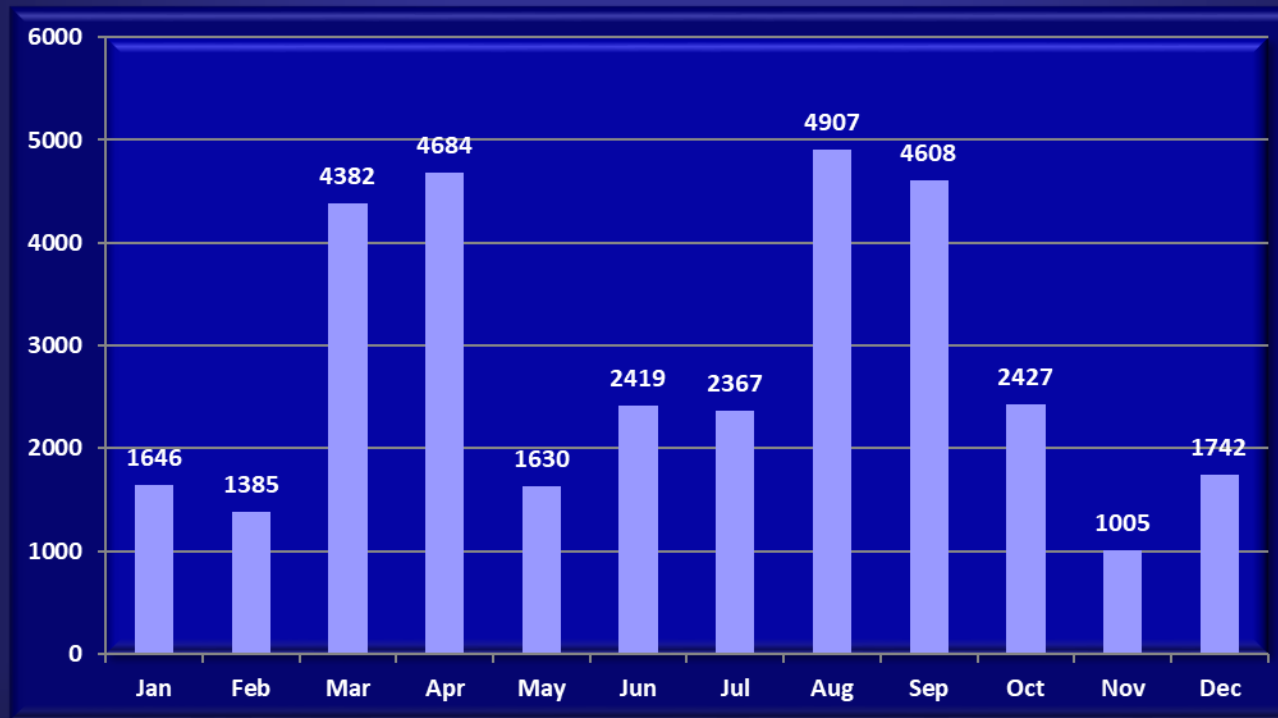
Total Incidents 2010-2019



Transits per Navigation Incident by Month 2019



(Allisions, Collisions, Groundings and Wake Damages only)



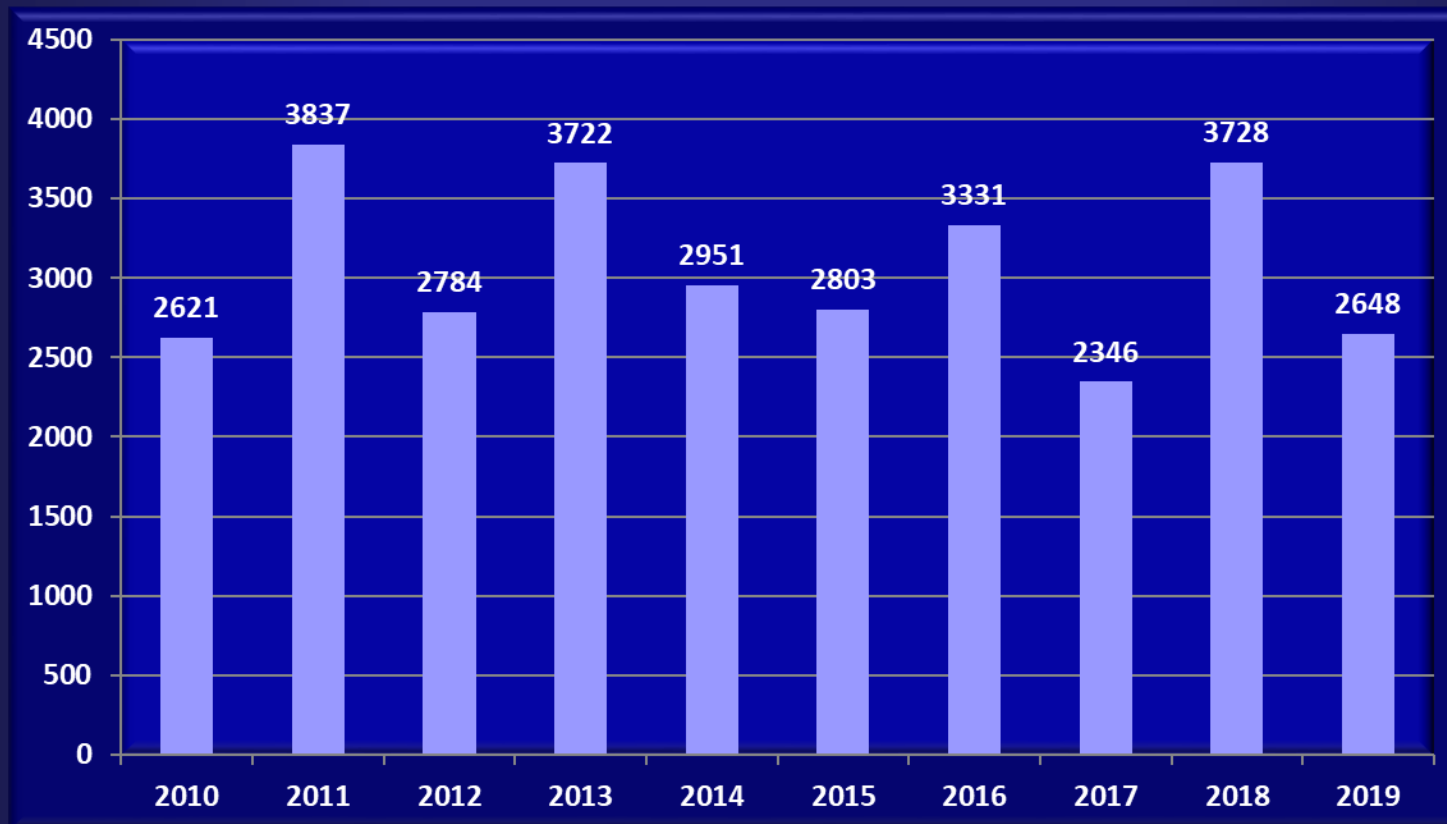
Ship Transits per Incident 2010-2019

(Allisions, Collisions, Groundings and Wake Damages only)



Tow Transits per Incident 2010-2019

(Allisions, Collisions, Groundings and Wake Damages only)

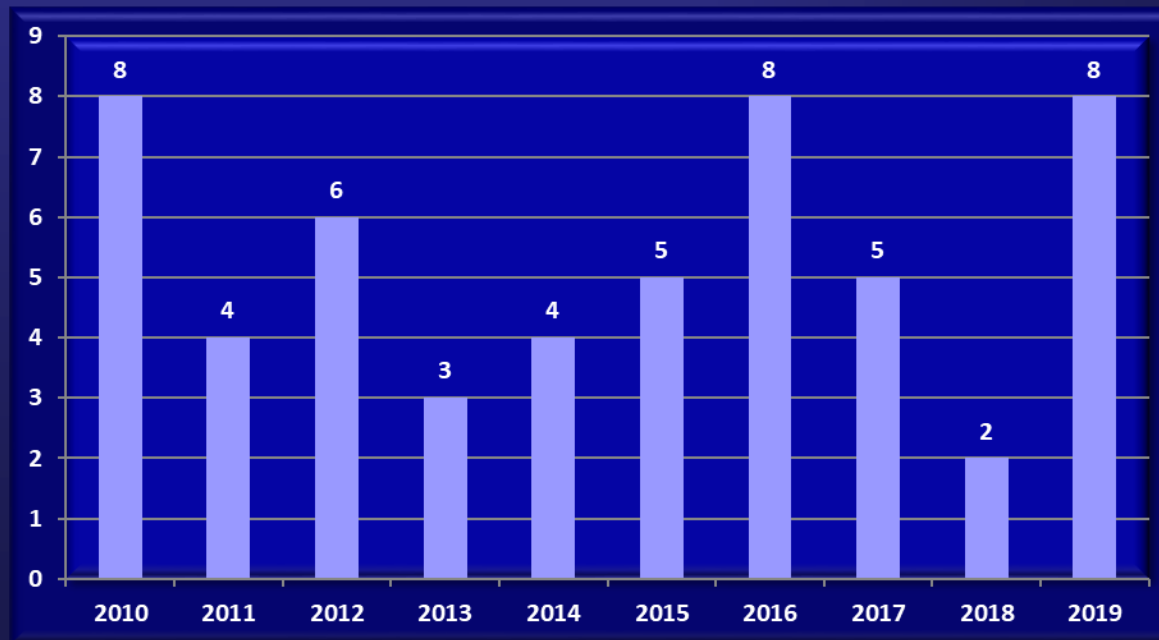


COLLISIONS



2019: 8 Total Collisions

- **6 Tows**
- **1 Ship**
- **1 Other**





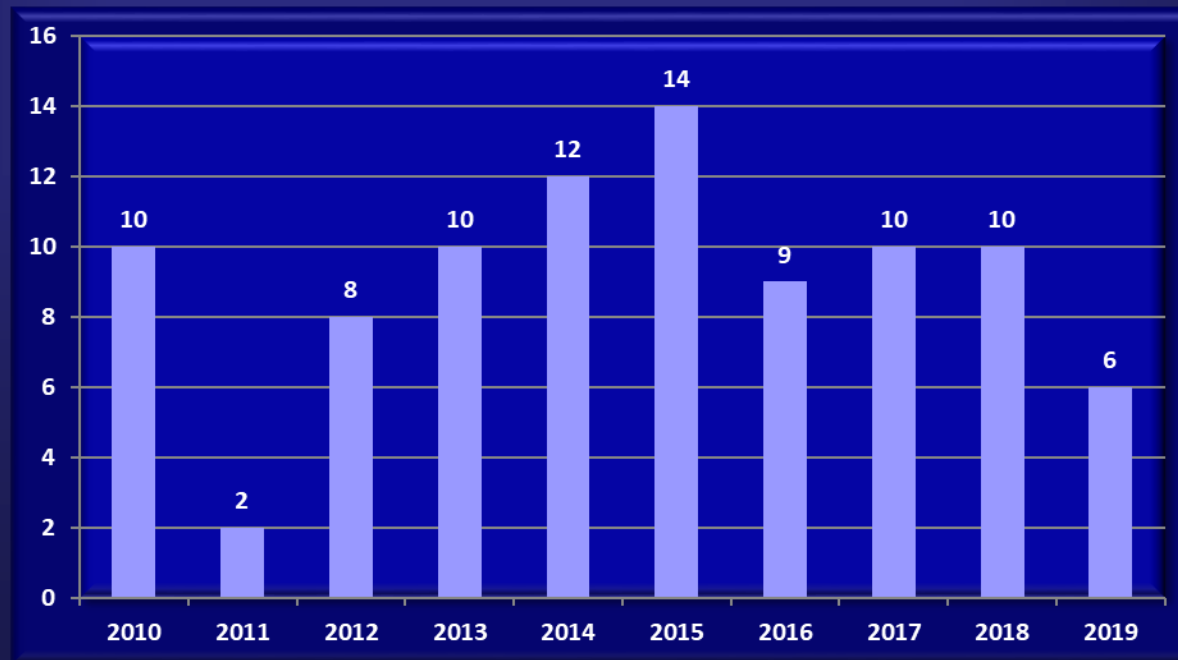
Collisions 2019

ALLISIONS



2019: 6 Total Allisions

- **5 Tows**
- **1 Ship**





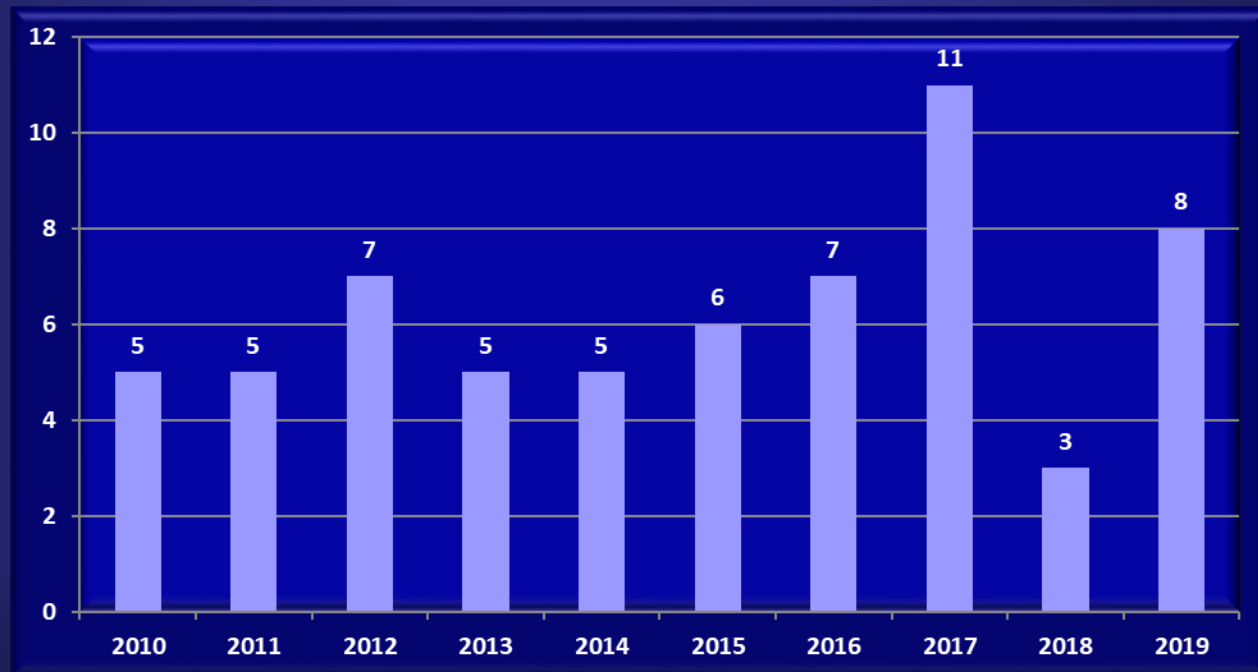
Allisions 2019

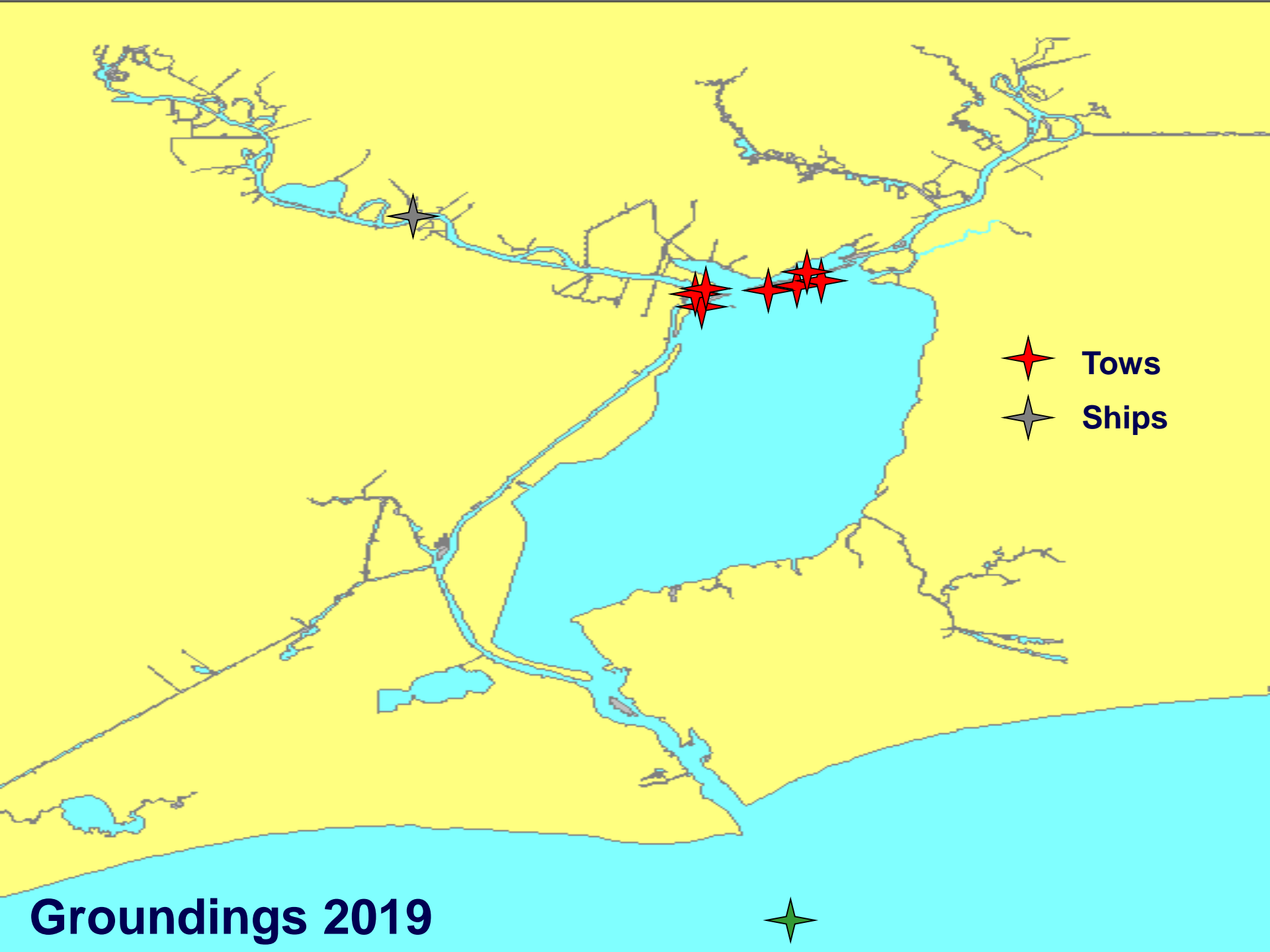
GROUNDINGS



2019: 8 Total Groundings

- **7 Tows**
- **1 Ship**

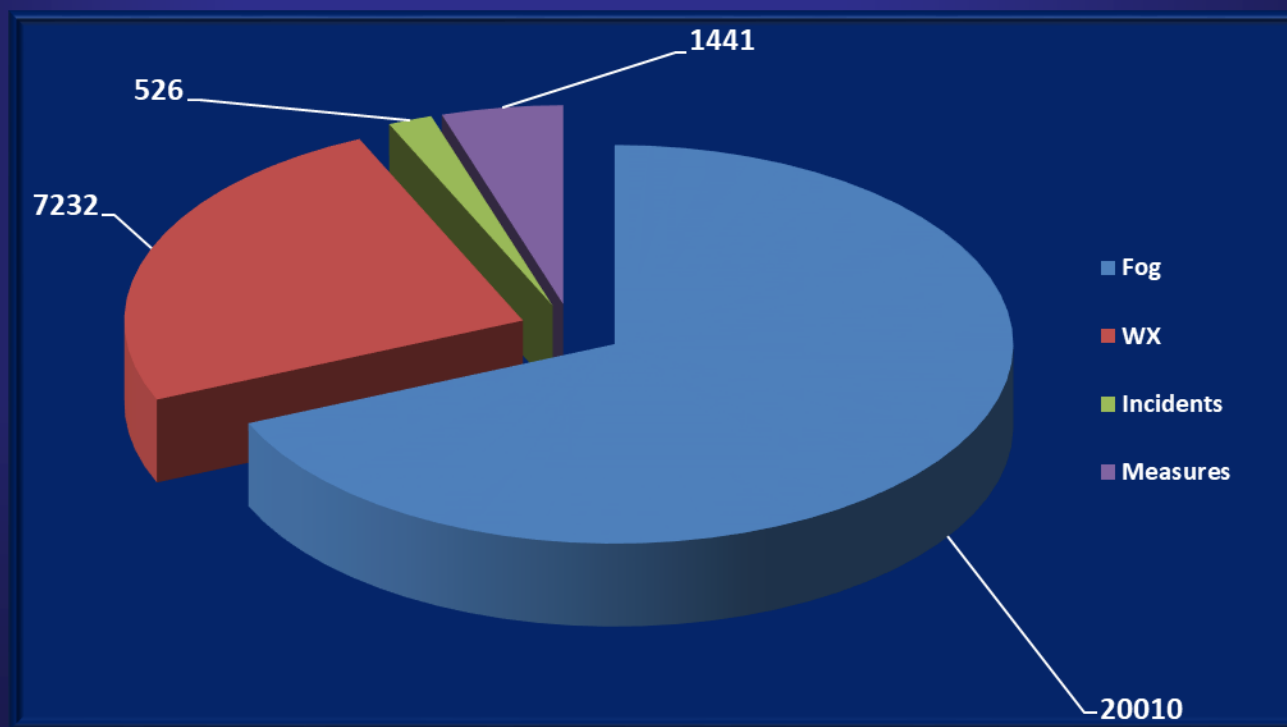




Groundings 2019

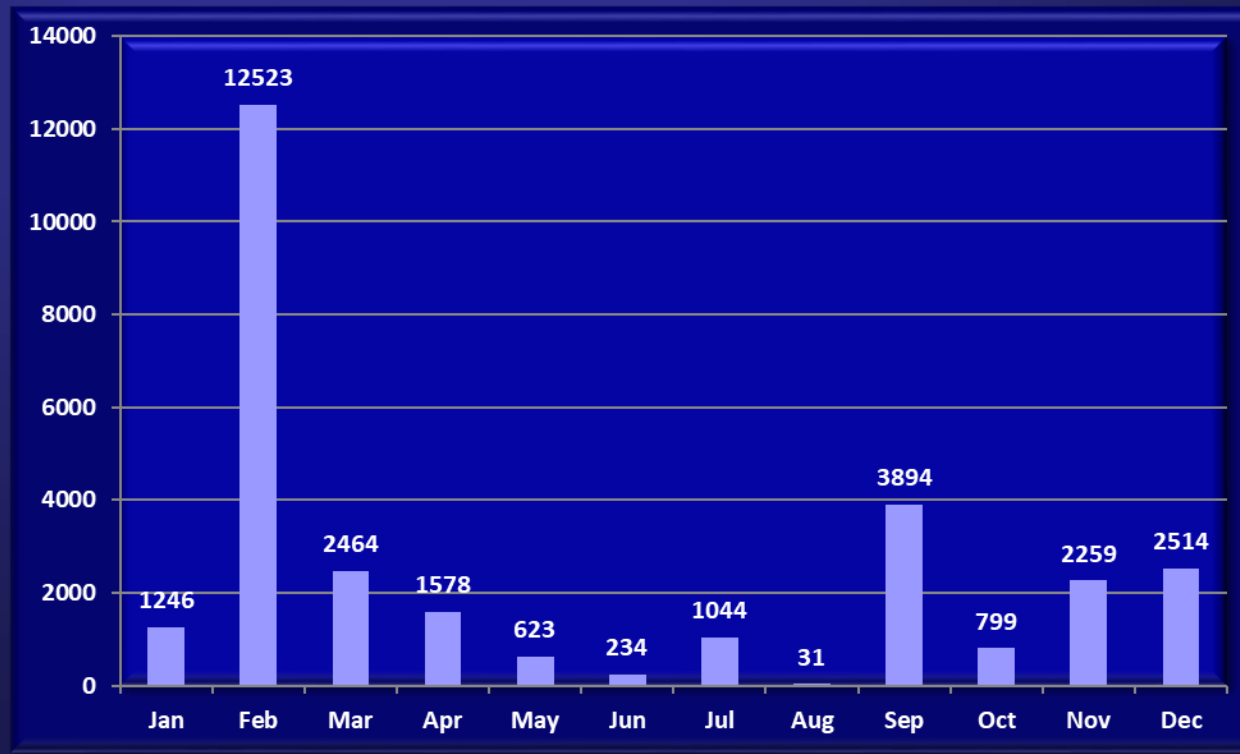


2019 Sabine-Neches Delays (in vessel hours)



2019

Total Vessel Delays by Month (in vessel hours)



2019 INCIDENT HIGHLIGHTS

- 4 Breakaways/Wake Damage:
 - 3 Wake Damage (+6 Wake Complaints)
 - 1 Breakaway
- 2 ATON Knockdowns (Reported)
- Increase in Equipment Failures
- 4 Near Miss Situations:
 - 1 Seaward of the SB Buoy
 - 2 F/V (1 impeding / 1 near miss of jetties)
 - 1 F/V at Sabine Pass Jetties
- 1 Significant Collisions:
 - ATB and OSV at Sabine Jetties

2020 CHALLENGES



- Planning for Deepening Project.
- Planning for increased ship traffic including LHG transits.



Ongoing Waterway Activities

Mr. Scott Whalen, USCG

Ongoing Waterway Projects



- KCS RR Bridge – Safety Zone
 - Jan – Jul 2020
- Bulkhead Installation Port Neches
- Veterans / Rainbow Bridge Fender Cell Repairs
- Port of Port Arthur Const.
- Cow Bayou Bridge Repairs

PAWSA Update



Date: 12 – 13 February 2020

Where: MSU Port Arthur

What: A formalized, structured and disciplined approach to identify major waterway safety hazards, estimate risk levels, evaluate potential mitigation measures, and set the stage for implementation of selected measures to reduce risk.

Who: A balanced mix of waterway users and stakeholders (limited to 30)

PAWSA Update



Environmental	Commercial Fishing
Infrastructure	Large Commercial Vessels
Law Enforcement	Allied Services
Planners / Policy Makers	Response
Shallow Draft Vessels <ul style="list-style-type: none"> • Inland Towing • Harbor Tugs • Fleets 	Shore Facilities <ul style="list-style-type: none"> • Ports • Refineries • LNG / LHG • Shipyards
Stakeholders	

VTS/WATERWAYS CONTACTS



- Scott Whalen, Director VTS Port Arthur,
(409) 719-5086 scott.k.Whalen@uscg.mil
- Douglas Hendrix, Operation/Training Manager,
(409) 719-5083 douglas.g.hendrix2@uscg.mil
- Vessel Traffic Center, Watch Supervisor 24hrs
(409) 719-5070 msupportarthur-vtssup@uscg.mil
- VTS Webpage – <https://www.atlanticarea.uscg.mil/vtsportarthur/>
- Homeport Website – <http://homeport.uscg.mil>



Mark Your Calendars

Upcoming SETWAC Meetings

Working Group Meeting

Thursday, April 9, 2020

10:00 am

Sabine-Neches Navigation District Office

Full Committee Meeting

Thursday, April 23, 2020

10:00 am

MSU Port Arthur